

Peabody Engineering
 1700 Alhambra Blvd., Suite 102
 Sacramento, CA 95816
 (916) 731-8088 office (916) 731-8088 fax



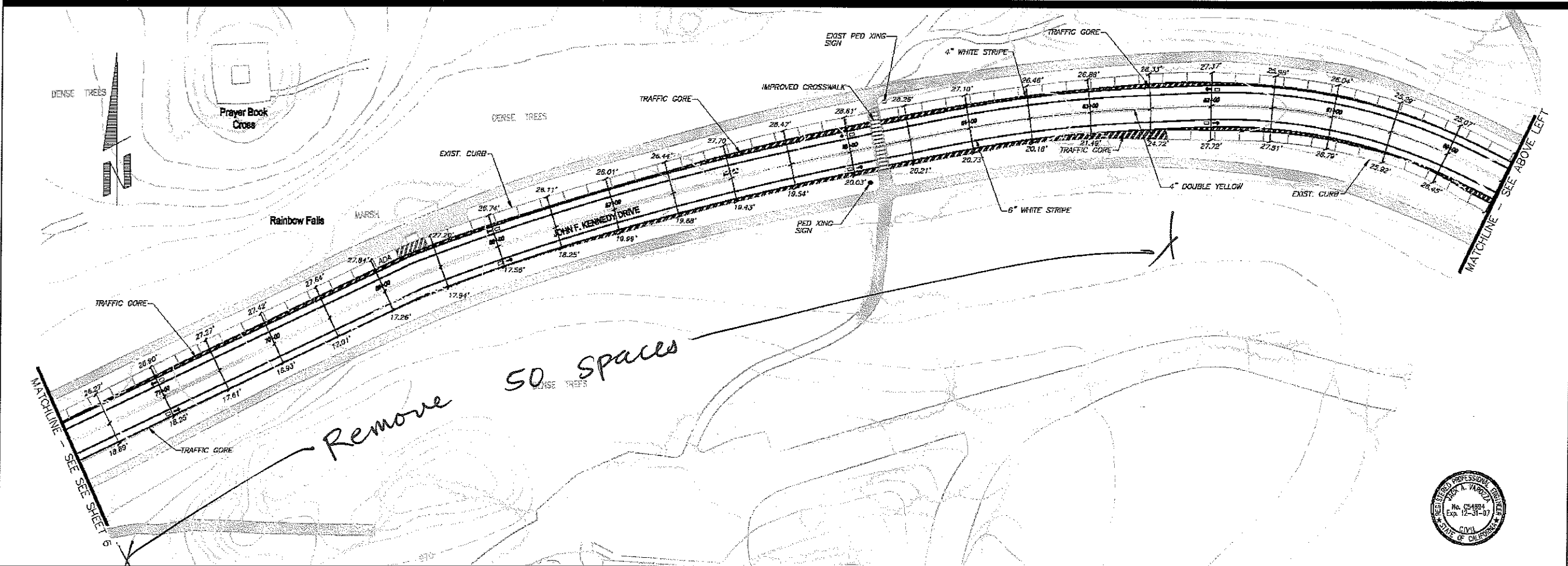
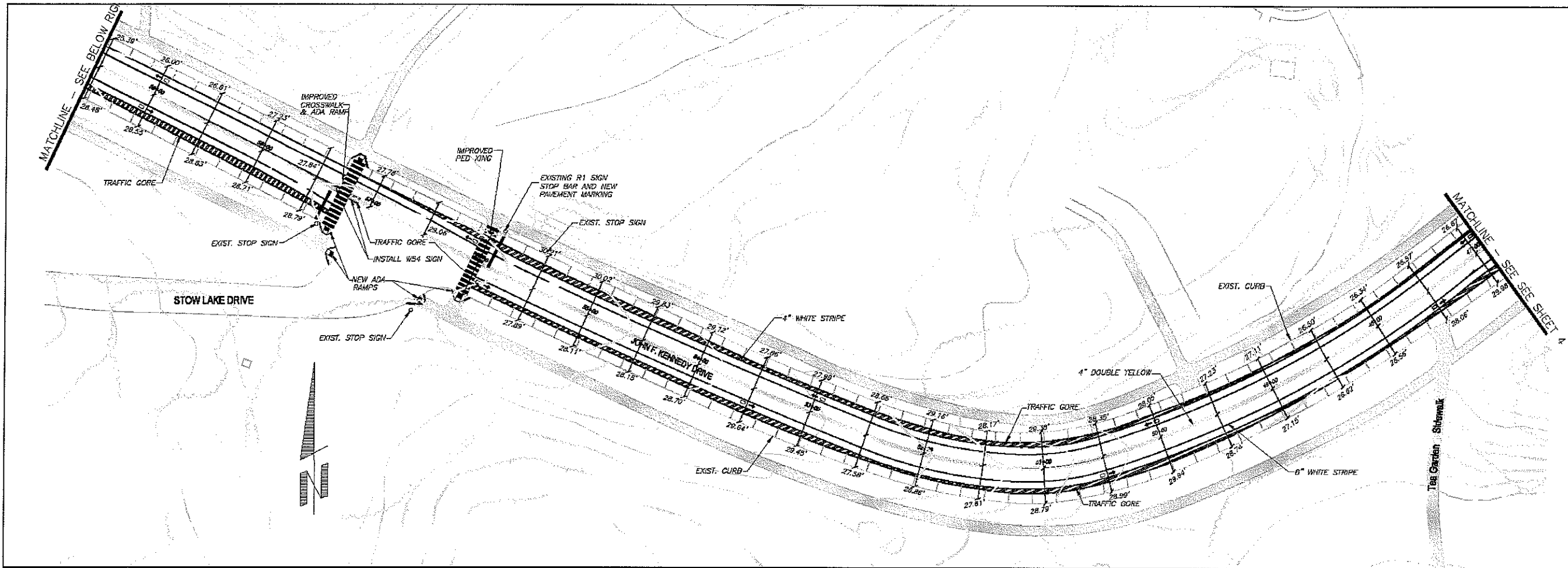
No.	Description	Exp. Init.	Date

JFK BICYCLE & PEDESTRIAN
 IMPROVEMENTS
 GOLDEN GATE PARK
 CONCOURSE AUTHORITY

JFK DRIVE
 0+00-23+50

DRAWN BY:	JRU
DESIGNED BY:	JRU
CHECKED BY:	JRU
HORIZONTAL:	1"=40'
VERTICAL:	NONE
DATE:	08/06/06
SHEET NO.:	3 OF 6
JOB NO.:	0706.001





Remove 50 spaces

Peabody Engineering
 1700 Alhambra Blvd, Suite 102
 Sacramento, CA 95816
 (916) 731-9099 office (916) 731-9098 fax



CITY APPROVAL	
By	Date

JFK BICYCLE & PEDESTRIAN
 IMPROVEMENTS
 GOLDEN GATE PARK
 CONCOURSE AUTHORITY

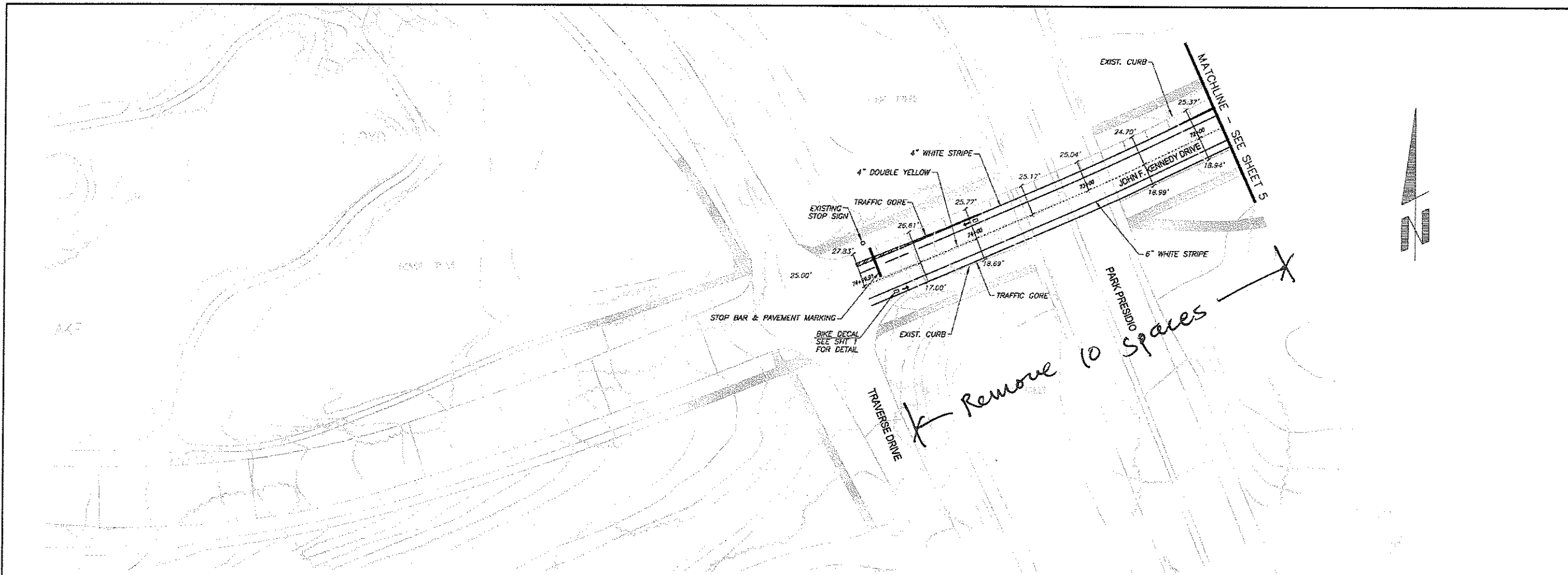
JFK DRIVE
 47+00-71+75

DRAWN BY: JAW
 DESIGNED BY: JAW
 CHECKED BY: JAW

HORIZONTAL: 1"=40'
 VERTICAL: NONE
 DATE: 05/08/06
 SHEET NO.
5 OF **6**

JOB NO.: 0706.001





Remove 10 spaces

JFK width (curb to curb) varies. Parking removal at specific sections are necessary to include stripe continuous bike lanes on both sides of the street from Kezar to Transverse Dr. A total of ~160 parking spaces will be removed as suggested by these striping drawings. Bike lanes can be striped 6-foot wide and travel lanes can vary between 10' and 12-foot wide.



Peabody Engineering
1700 Alhambra Blvd., Suite 102
Sacramento, CA 95816
(916) 731-8088 office (916) 731-8089 fax



No.	Description	Exp. Init.	By	Date

JFK BICYCLE & PEDESTRIAN IMPROVEMENTS
GOLDEN GATE PARK CONCOURSE AUTHORITY

JFK DRIVE
71+75-END

DRAWN BY: JAV
DESIGNED BY: JAV
CHECKED BY: JAV
HORIZONTAL: 1"=40'
VERTICAL: NONE
DATE: 06/06/06
SHEET NO. 6 OF 6
JOB NO.: 0706.001