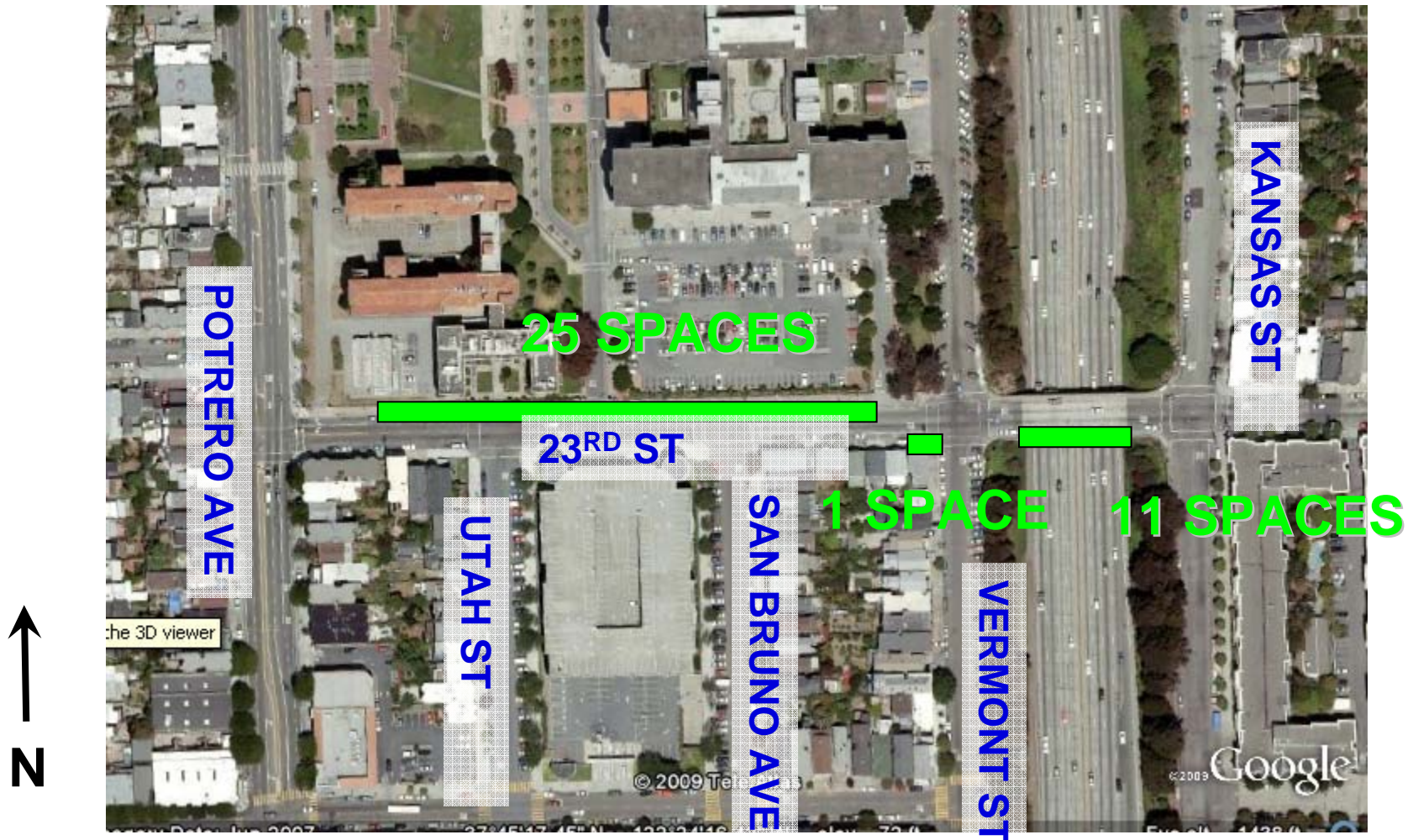
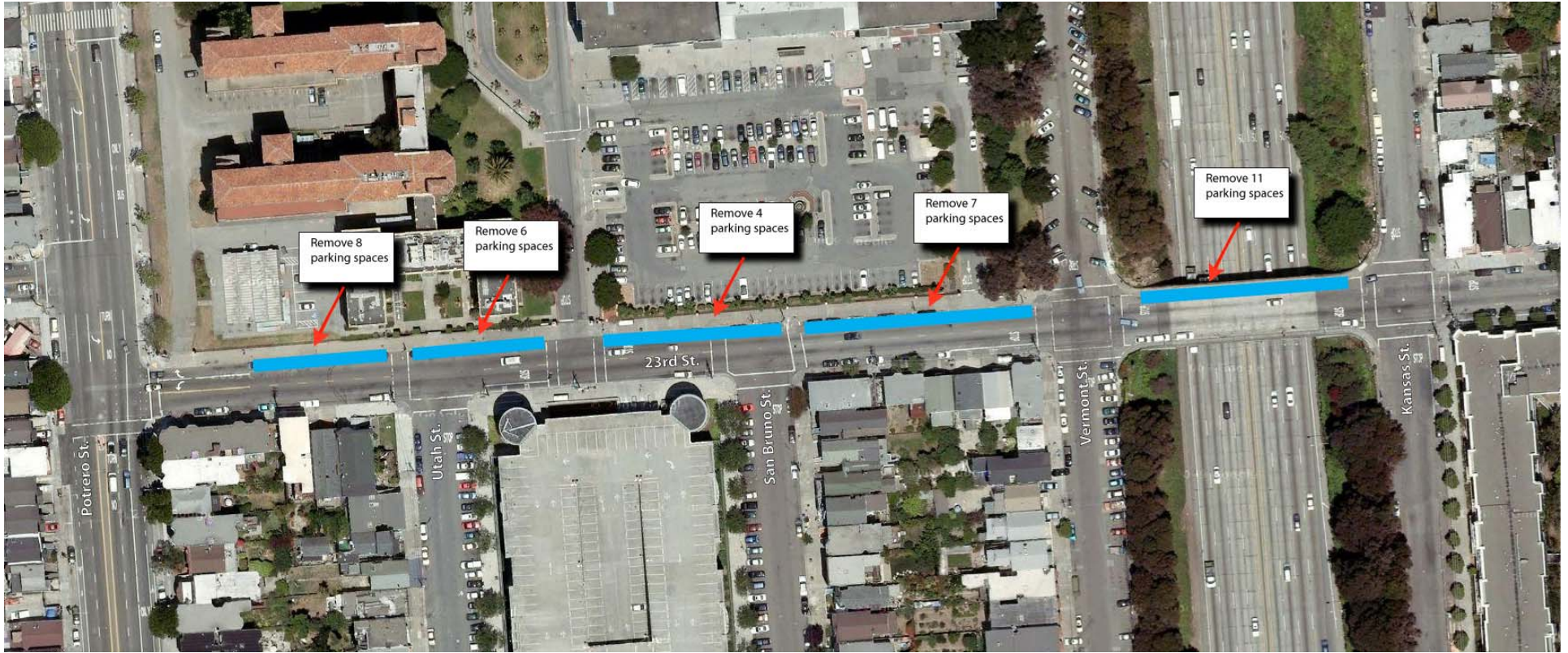
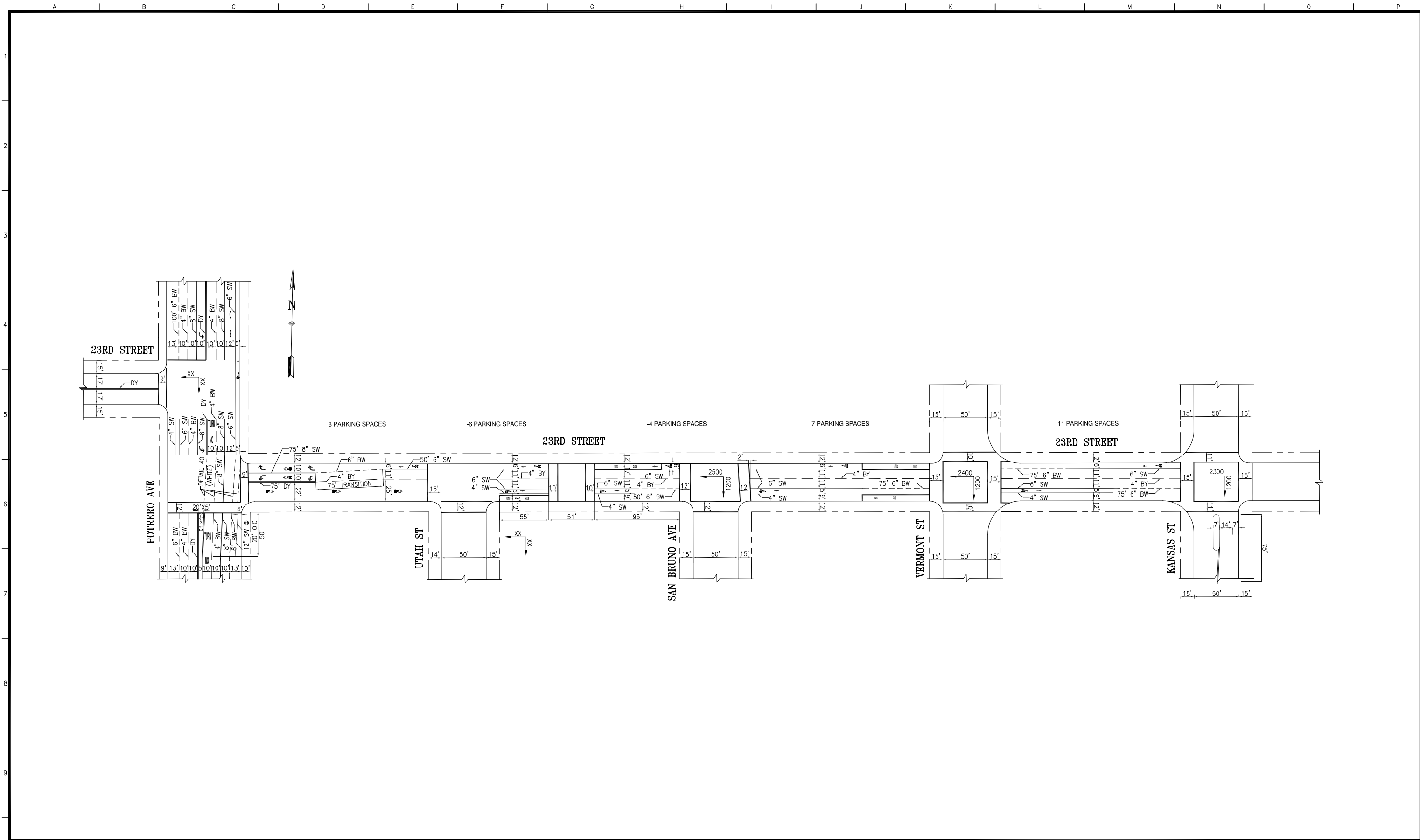


Proposed parking removal on 23rd Street



Proposed parking removal on 23rd Street





NO.	DATE	DESCRIPTION	BY	APP.
TABLE OF REVISIONS				
CHECK WITH TRACING TO SEE IF YOU HAVE LATEST REVISION				

REFERENCE INFORMATION
& FILE NO. OF SURVEYS



DEPARTMENT OF PARKING AND TRAFFIC
DIVISION OF TRAFFIC ENGINEERING
CITY AND COUNTY OF SAN FRANCISCO

DESIGNED: DATE: **DRC 05/29/09**
 DRAWN: DATE:
 CHECKED: DATE:

APPROVED
 SECTION ENGINEER DATE:
 CITY TRAFFIC ENGINEER DATE:

SCALE:
 SHEET OF SHEETS
1 OF 1

PROJECT 5-1 MODIFIED OPTION 1
23RD STREET
POTRERO AVENUE TO KANSAS STREET

CONTRACT NO.
 DRAWING NO.
 FILE NO.
 REV. NO.

EXTERNAL REFERENCES:
 FONTS USED:
 SCALE FACTOR:
 PLOT SCALE:
 ORIGIN:
 FILE NAME:
 DATE: