

| NO. | DATE | DESCRIPTION | BY | APP. |
|-----|----------|--|----|------|
| 1 | 02/17/05 | LANE RECHANNELIZATION FROM MISSOURI TO CONNECTICUT | TA | ET |
| 2 | 04/27/04 | CHANGED STRIPING FROM KANSAS TO US101 | TA | AKW |

TABLE OF REVISIONS
CHECK WITH TRACING TO SEE IF YOU HAVE LATEST REVISION

REFERENCE INFORMATION
& FILE NO. OF SURVEYS



DEPARTMENT OF PARKING AND TRAFFIC
DIVISION OF TRAFFIC ENGINEERING
CITY AND COUNTY OF SAN FRANCISCO

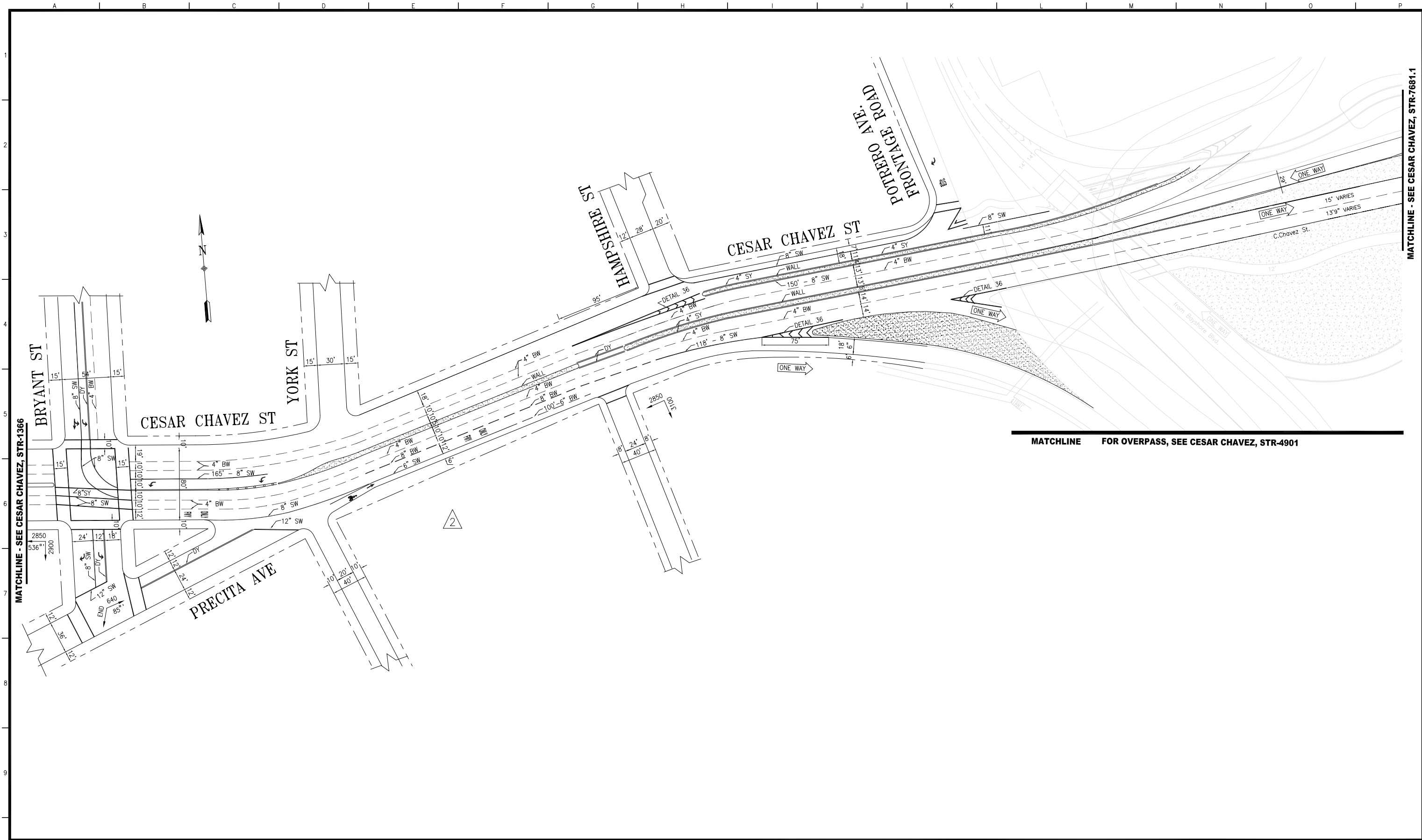
DESIGNED: DATE: SB 06/04
 DRAWN: DATE: TA 06/04
 CHECKED: DATE: AKW 06/04

APPROVED: DATE: DANIEL ARELLANO 2004
 SECTION ENGINEER DATE:
 BOND M. YEE 2004
 DEP. DIRECTOR AND CITY TRAFFIC ENGINEER DATE:

SCALE:
 1"=50'
 SHEET OF SHEETS

TRAFFIC STRIPING
 CESAR CHAVEZ STREET
 VERMONT STREET TO MISSISSIPPI

CONTRACT NO.
 DRAWING NO. STR-7681.1
 FILE NO.
 REV. NO. 2



MATCHLINE - SEE CESAR CHAVEZ, STR-1366

MATCHLINE - SEE CESAR CHAVEZ, STR-7681.1

MATCHLINE FOR OVERPASS, SEE CESAR CHAVEZ, STR-4901

| NO. | DATE | DESCRIPTION | BY | APP. |
|-----|----------|--|----|------|
| 1 | 3/3/07 | ADDED 8" SW LINE AT PRECITA | TA | RO |
| 2 | 08/26/05 | ADDED 8" SW BTWN HAMPSHIRE AND POTRERO | SF | FM |

TABLE OF REVISIONS
CHECK WITH TRACING TO SEE IF YOU HAVE LATEST REVISION

REFERENCE INFORMATION
& FILE NO. OF SURVEYS

SUPERCEDES
STR-1936 REV "10"



DEPARTMENT OF PARKING AND TRAFFIC
DIVISION OF TRAFFIC ENGINEERING
CITY AND COUNTY OF SAN FRANCISCO

DESIGNED: DATE: _____
DRAWN: DATE: 06/05
CHECKED: DATE: 06/05

APPROVED
THOMAS P. FOLKS 2005
SECTION ENGINEER DATE: _____

JACK L. FLECK 2005
DEP. DIRECTOR AND
CITY TRAFFIC ENGINEER DATE: _____

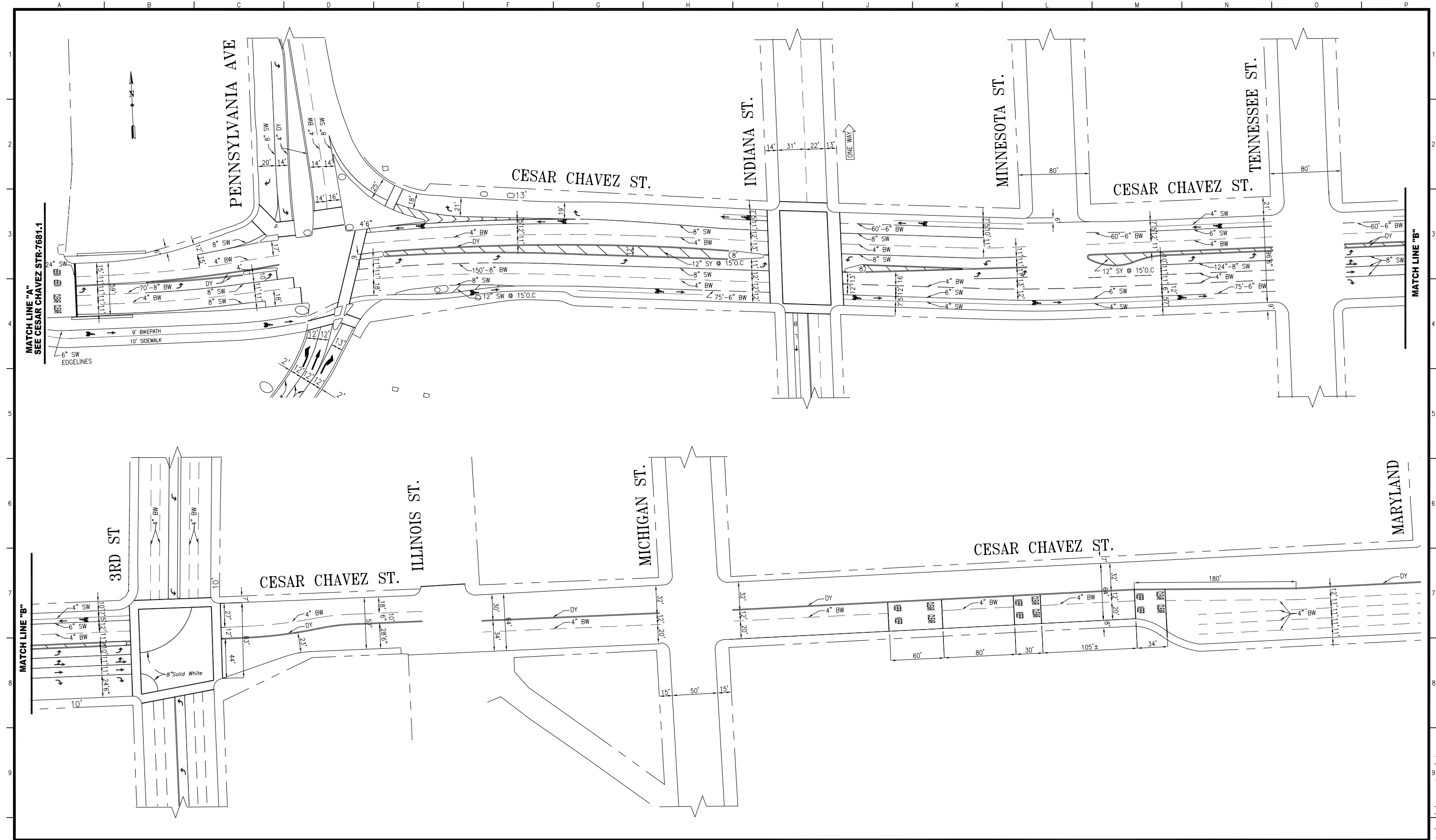
SCALE:
1"=50'
SHEET OF SHEETS

TRAFFIC STRIPING

CESAR CHAVEZ STREET
BRYANT STREET TO POTRERO AVENUE

CONTRACT NO.
DRAWING NO.
STR-7681
FILE NO.
REV. NO.
2

EXTERNAL REFERENCES:
FONTS USED:
SCALE FACTOR:
PLOT SCALE:
FILE NAME: T:\e_files\off_rec\Drawings\0_@rc\cesar...
DATE:



MATCH LINE "A"
SEE CESAR CHAVEZ STR-7681.1

MATCH LINE "B"

MATCH LINE "B"

| NO. | DATE | DESCRIPTION | BY | APP. |
|---|------|-------------|----|------|
| TABLE OF REVISIONS | | | | |
| CHECK WITH TRACING TO SEE IF YOU HAVE LATEST REVISION | | | | |

REFERENCE INFORMATION
& FILE NO. OF SURVEYS

SUPERCEDES
STR-1328.1 REV "14"
&
STR-1328.2 REV "3"



DEPARTMENT OF PARKING AND TRAFFIC

DIVISION OF TRAFFIC ENGINEERING

CITY AND COUNTY OF SAN FRANCISCO

DESIGNED: DATE:
DRAWN: DATE:
CHECKED: DATE:
AKW 2005

APPROVED
SECTION ENGINEER DATE:
DEP. DIRECTOR AND
CITY TRAFFIC ENGINEER DATE:

SCALE:
1"=50'
SHEET OF SHEETS

TRAFFIC STRIPING

CESAR CHAVEZ STREET
PENNSYLVANIA AVENUE TO MARYLAND STREET

CONTRACT NO.
DRAWING NO.
STR-7681.2
FILE NO.
REV. NO.
0

EXTERNAL REFERENCES:
FONTS USED:
SCALE FACTOR:
PLOT SCALE:
FILE NAME:
DATE: