

Gavin Newsom | Mayor

Tom Nolan | Chairman

Rev. Dr. James McCray Jr. | Vice-Chairman

Cameron Beach | Director

Shirley Breyer Black | Director

Malcolm Heinicke | Director

Jerry Lee | Director

Bruce Oka | Director

Nathaniel P. Ford Sr. | Executive Director/CEO

## COMMUNITY MEETING 2<sup>nd</sup> STREET CORRIDOR

As part of an ongoing effort to make San Francisco more livable and sustainable, the City continually seeks to enable residents, commuters and visitors to use sustainable modes of travel. In concert with the City's *Transit First* policy and Climate Action Plan, which calls on San Francisco to "increase bicycling and walking as an alternative to driving", the SFMTA, working with the community, has developed a comprehensive citywide network of bicycle facilities that include bike lanes, signed and stenciled bike routes and bike paths.

Your neighborhood has been earmarked for bicycle network improvements, specifically the addition of bike lanes that will connect your corridor with already established lanes. Bicycle lanes will improve safety for bicyclists using this portion of the Bicycle Network.

In order to add bicycle lanes to 2<sup>nd</sup> Street, some parking removal, left-turn restrictions, lane removals and other street configuration modifications are being considered between Market and King Streets. Please see the diagram on the back of this flyer for more information.

Please join SFMTA staff for a detailed presentation and discussion at a public meeting hosted by the South Beach-Rincon-Mission Bay Neighborhood Association but open to the general public:

Monday, May 11, 2009 – 6:00 to 7:30 p.m.  
South Beach Harbor Services Building  
Community Room  
The Embarcadero at Pier 40

If you would like more information or cannot make the meeting, please visit [www.sfmta.com/bike](http://www.sfmta.com/bike) or contact the SFMTA Bicycle Program at 585-2453 or [bicycle@sfmta.com](mailto:bicycle@sfmta.com).

## **2<sup>nd</sup> Street, King Street to Market Street Project Summary (2-1):**

Bike lanes are proposed for installation northbound between King Street and Market Street and southbound between Market Street and Townsend Street. A combination of lane removals and parking removals provide the space for bicycle lanes.

### **Bicycle facilities proposed:**

- Northbound bicycle lane from King Street to Market Street
- Southbound bicycle lane from Market Street to Townsend Street
- Southbound shared roadway markings (sharrows) from Townsend Street to King Street

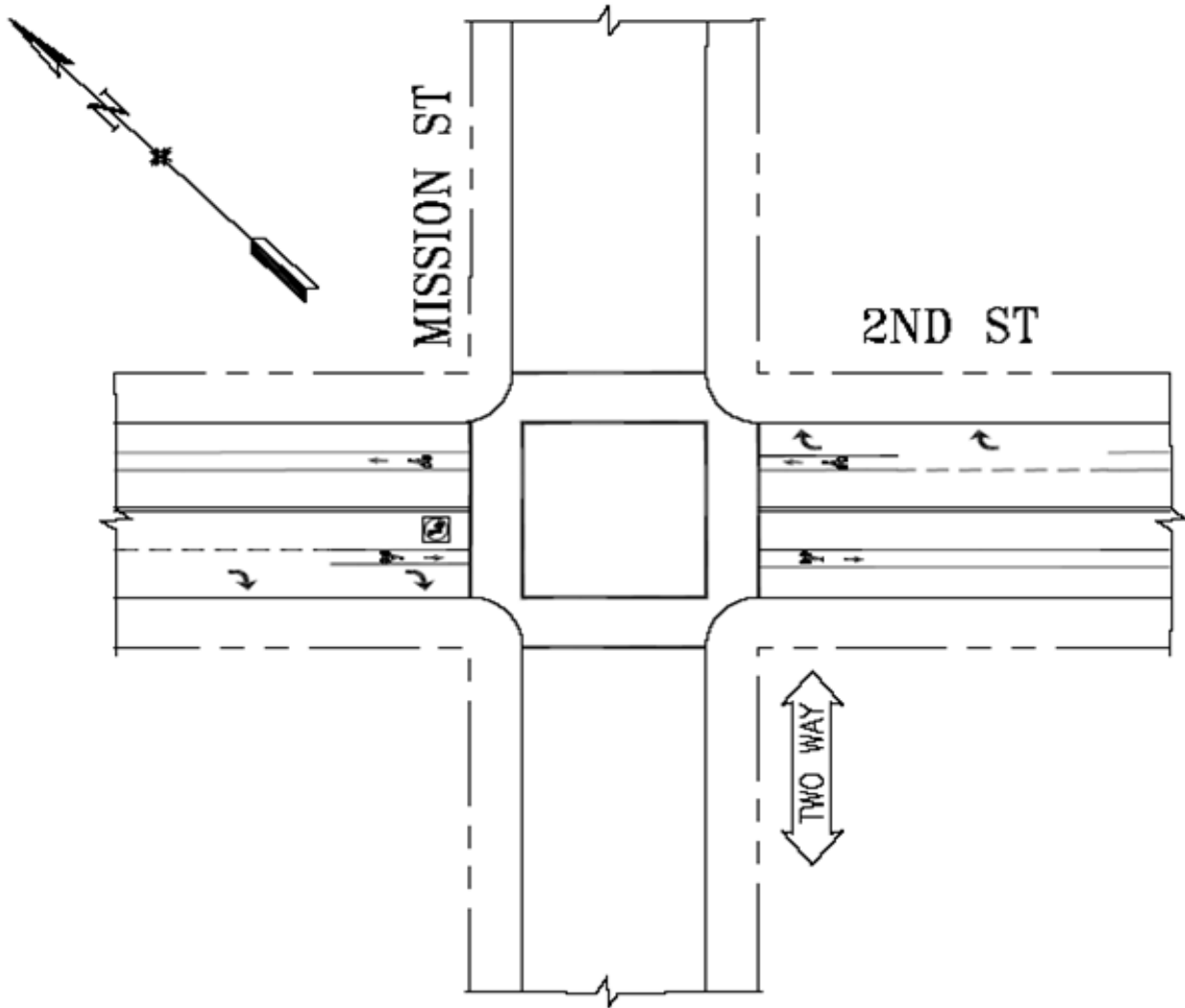
### **Lane changes proposed:**

- Remove one southbound travel lane on 2<sup>nd</sup> Street between Market Street to just south of Brannan Street
- Remove one northbound travel lane on 2<sup>nd</sup> Street from Townsend to just south of Brannan Street, and from Harrison Street to Market Street
- Install right-turn pockets for southbound 2<sup>nd</sup> Street at Mission Street, Howard Street and Harrison Street.
- Install right-turn pockets for northbound 2<sup>nd</sup> Street at Folsom Street and Mission Street.
- Prohibit left-turns for southbound 2<sup>nd</sup> Street at Mission, Natoma, Clementina, Folsom, Harrison, Bryant and Brannan Streets.
- Prohibit left-turns for northbound 2<sup>nd</sup> Street at Minna Street.

### **Parking removal proposed on 2<sup>nd</sup> Street:**

- West side, between Jessie and Mission: 3 metered parking spaces, 2 yellow commercial loading zones
- West side, between Natoma Street and Howard Street: 2 metered parking spaces, 1 white passenger loading zone
- West side, between Dow Place and Harrison Street: 5 metered parking spaces.
- East side, between Dow Place and Folsom Street: 1 metered parking space.
- East side, between Minna and Mission Street: 2 metered parking spaces, 1 white passenger loading zone

## 2ND ST AT MISSION ST PROPOSED



### 2<sup>nd</sup> Street at Mission Street:

- Remove one lane in each direction
- Install right-turn pockets in both directions
- Install bike lanes in both directions
- “No Left Turn” southbound at Mission Street