



San Francisco Municipal Transportation Agency Rail Improvement Projects

Project Team

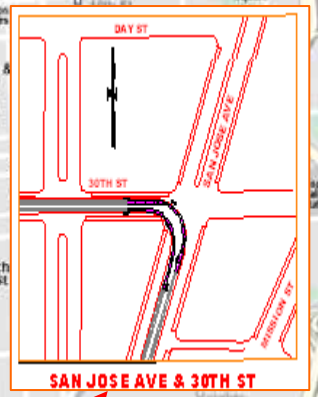
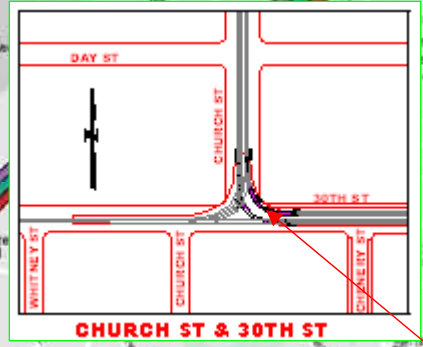
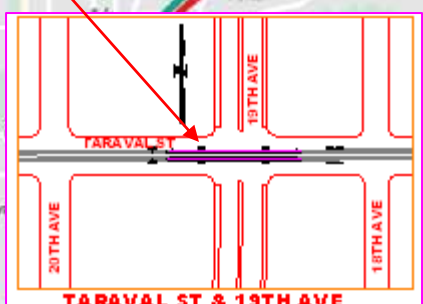
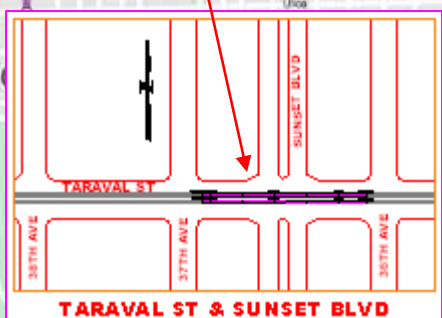
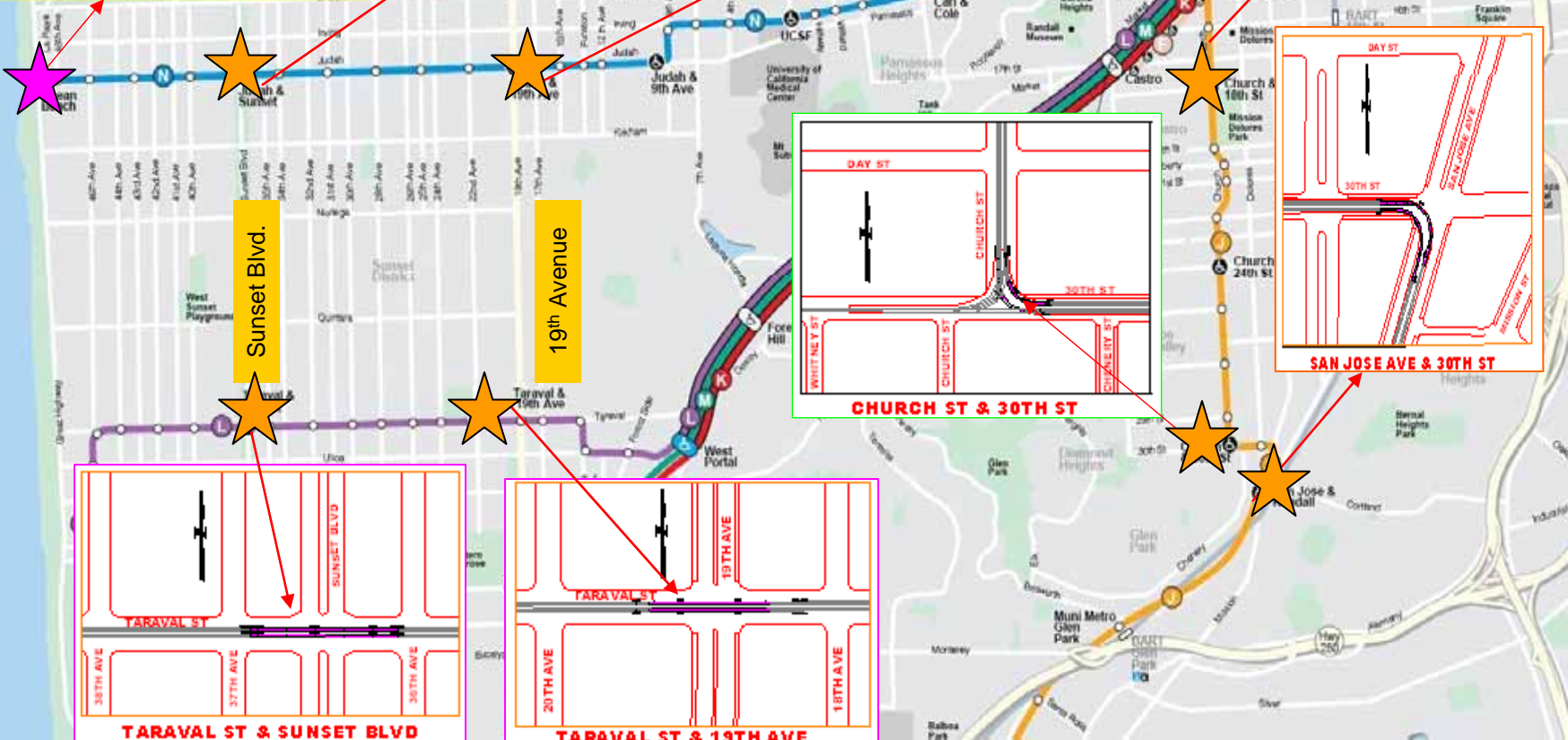
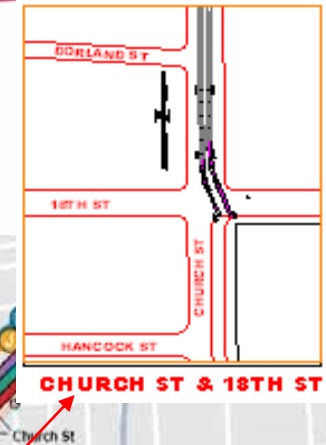
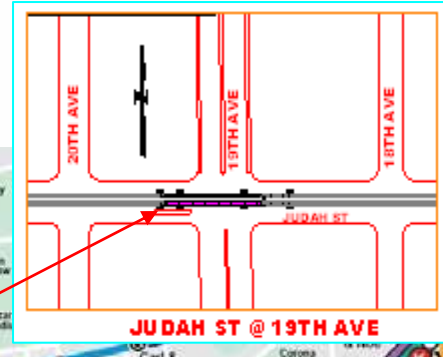
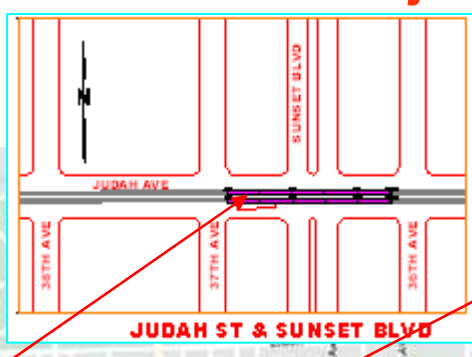
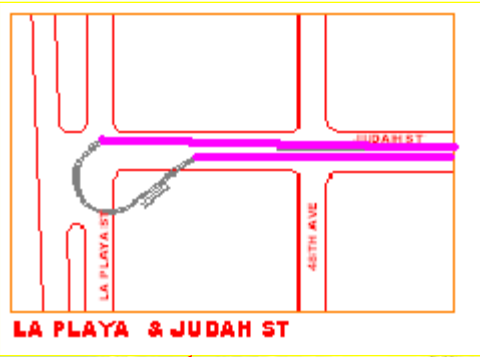
Project Manager: Ha Nguyen

Project Engineer: Terry Fahey

Resident Engineer: Victor Yuen



Project Limits



Project Goals

Improve the reliability of the transit system by replacing major components:

- Boarding platform at Judah and La Playa
- New rails
- Overhead poles
- Street pavement
- Curb ramps
- New water pipes
- Striping
- Muni Train Signal Priority

Reconstruction of the Judah Street & La Playa Street (N-Line) Boarding Platform



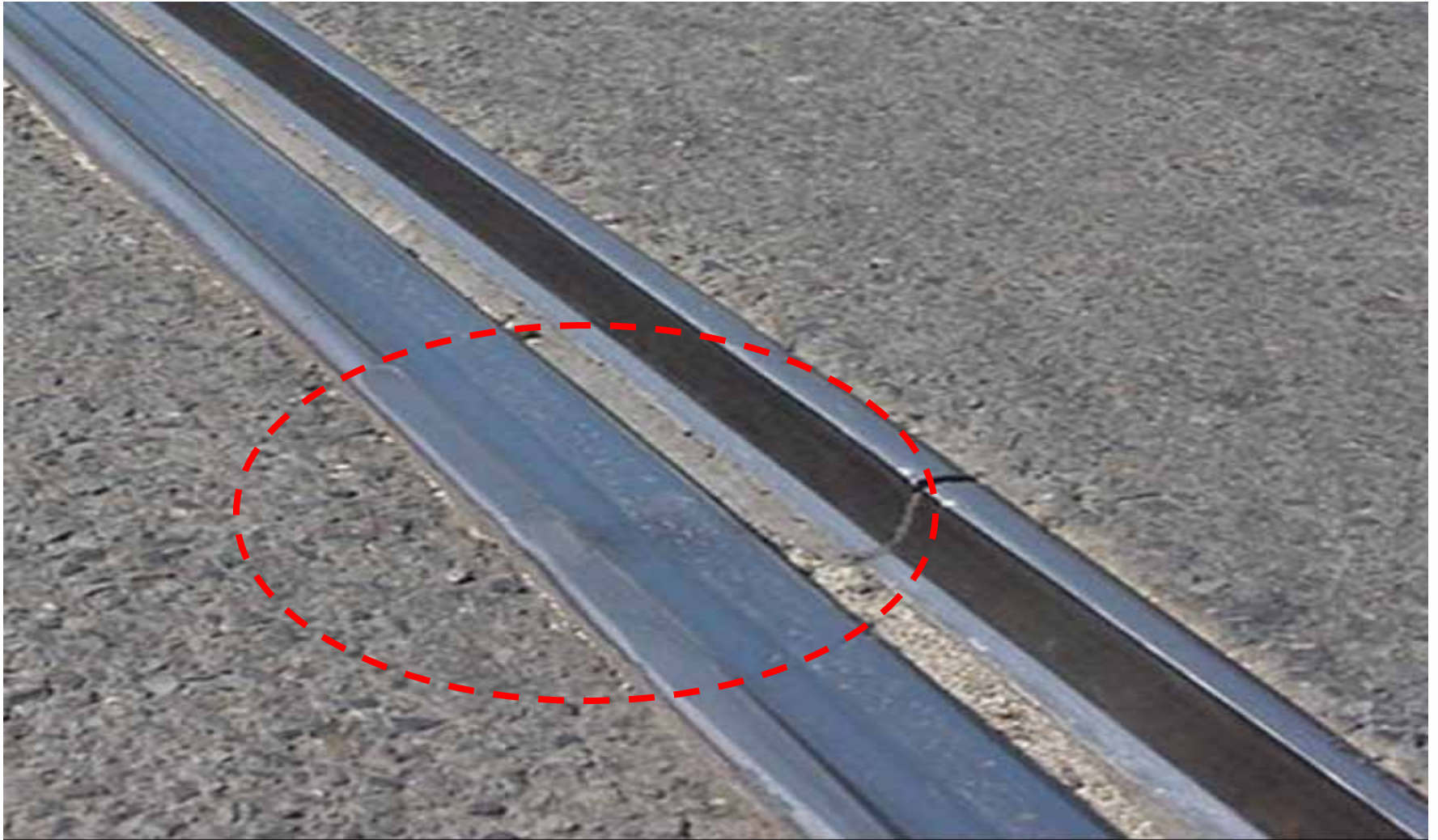
Track Work

Most tracks are nearly 30 years old and at the end of their service lives.

Major Replacement:

- Remove existing worn track
- Install utilities
- Install new track
- Construct permanent track pavement
- Install street pavement

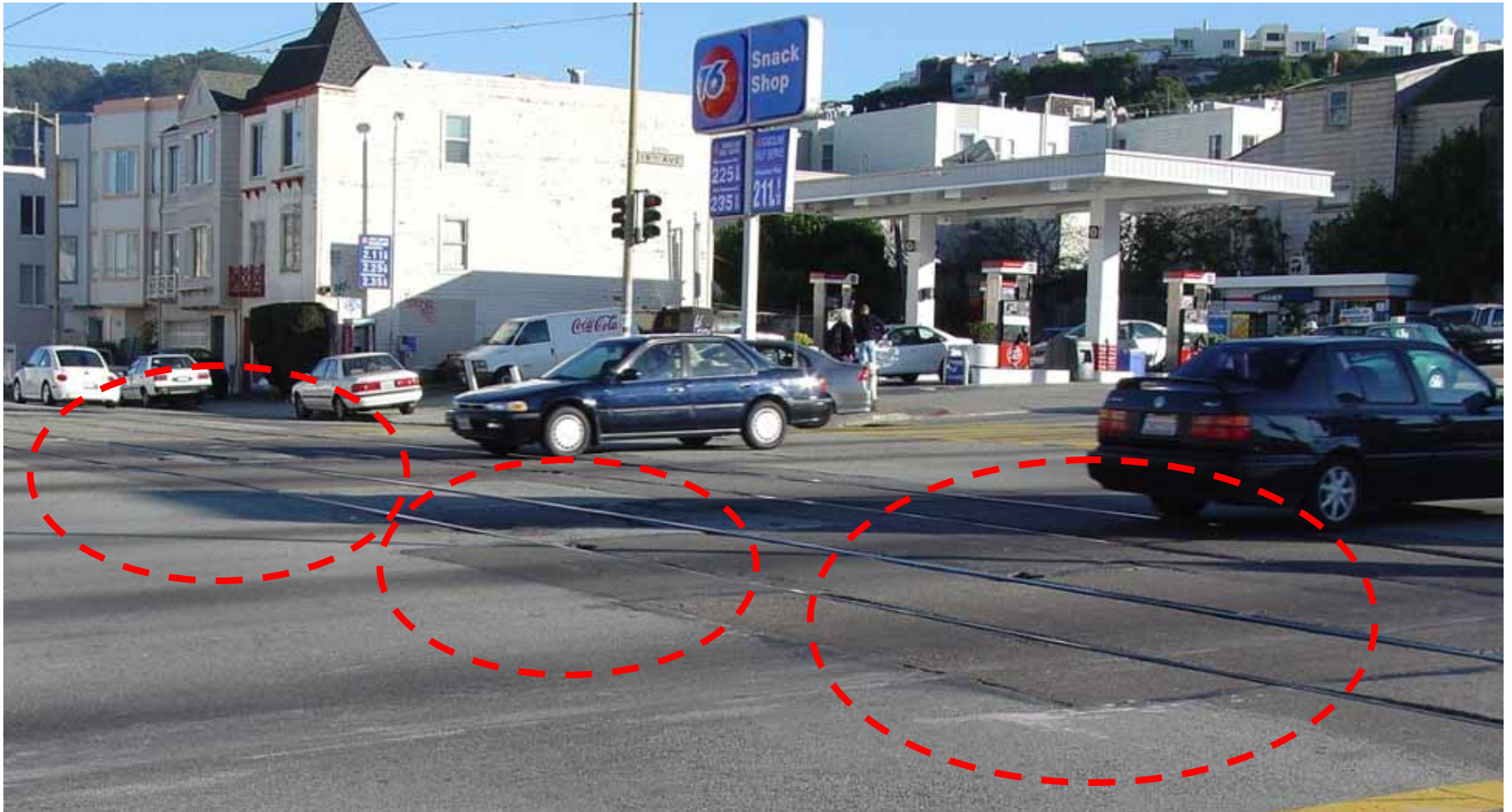
Worn Rail



Worn Pavement



Judah Street & 19th Avenue



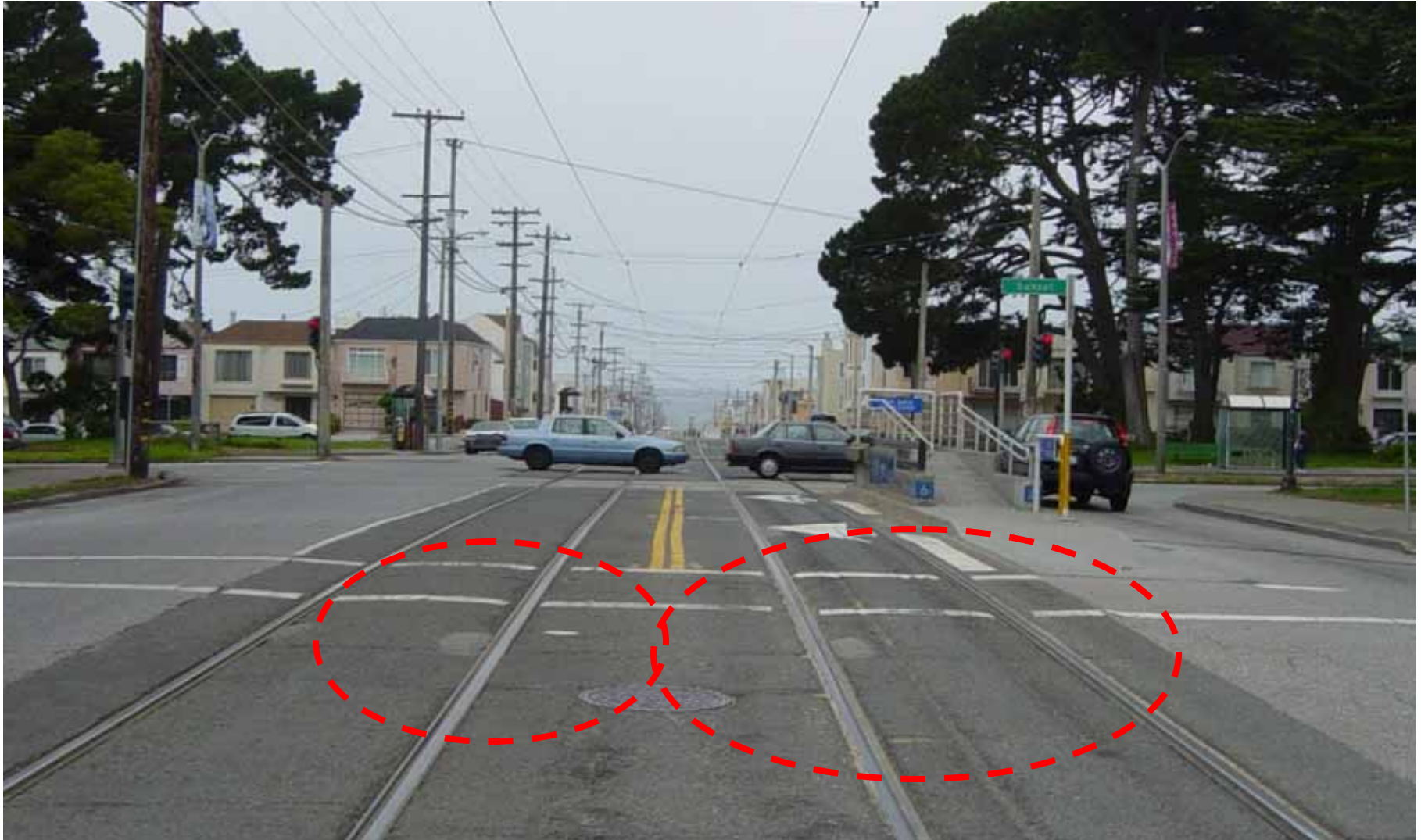
Judah Street & Sunset Boulevard



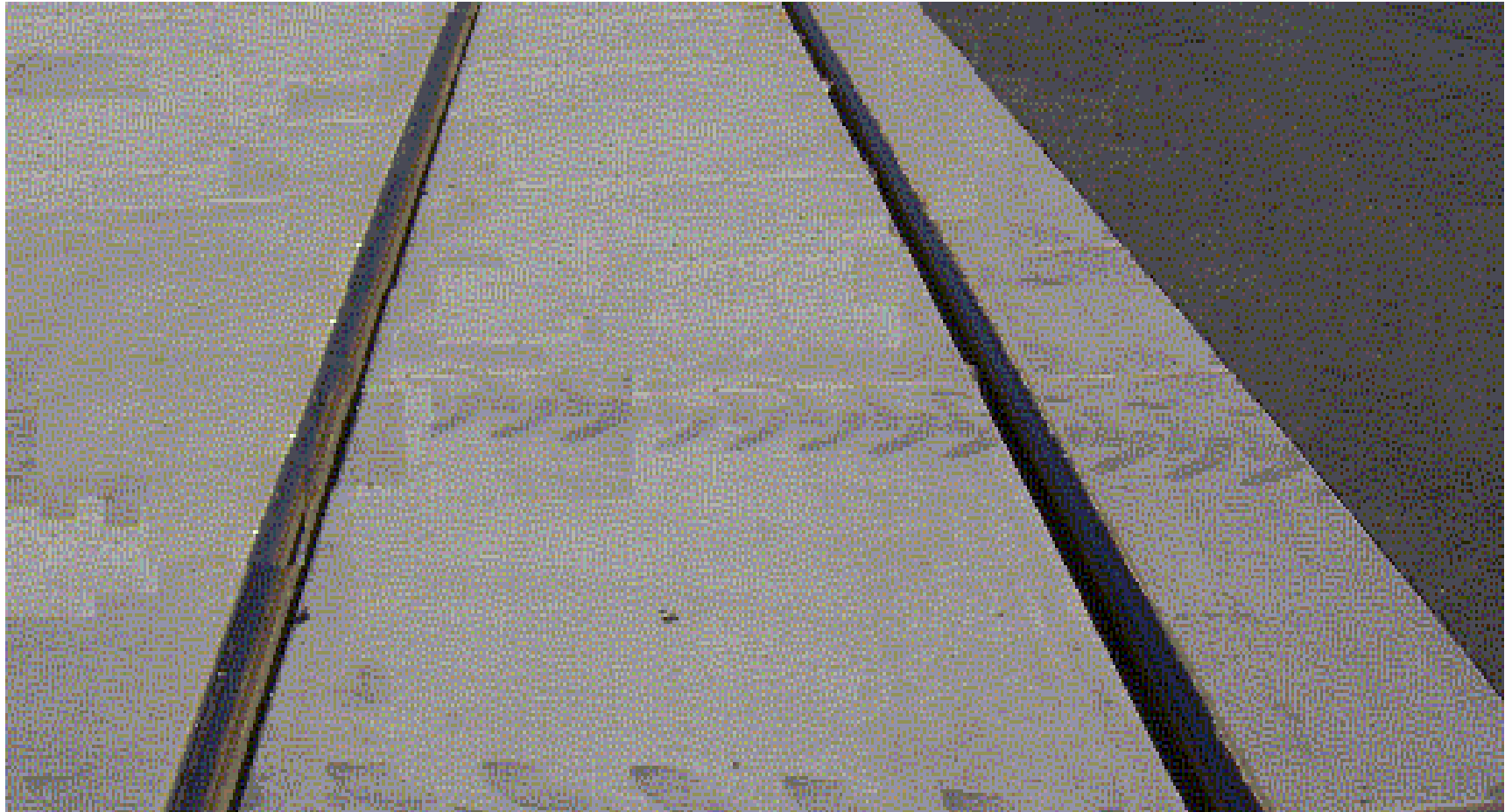
Taraval Street & 19th Avenue



Taraval Street & Sunset Boulevard



New Rail & Pavement



Overhead Poles



Existing poles



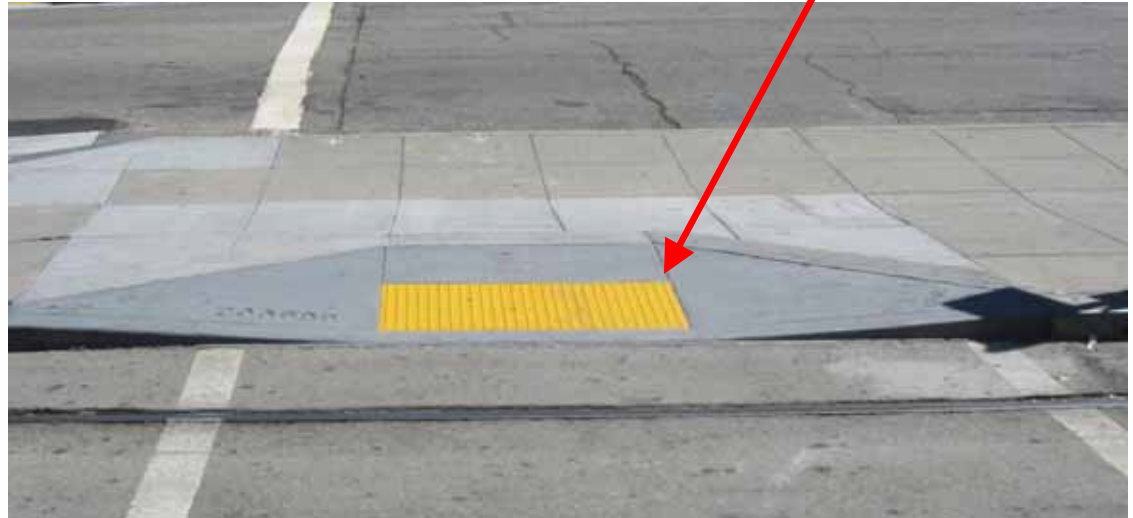
New pole

DPW Curb Ramp Improvements



Existing curb ramp

New curb ramp



Construction Impacts

- Rail service affected
- Traffic detours
- Increased traffic on side streets
- Temporary street parking removal
- Parking in driveways only
- Impacts to local residents
- Construction noise



Typical Construction Timeline

Friday 6 p.m.	Begin traffic detours
Friday 8 p.m.	Transfer from rail to bus
Friday 9 p.m.	Begin construction
Monday 4 a.m.	Construction finished Traffic detours removed Rail service restored

Construction Schedule (Tentative)

N-Line 3 weekends: Friday 6 p.m. to Monday 4 a.m.

Judah Street & 19th Avenue

Judah Street & Sunset Boulevard

Construction scheduled dates: November 13th & 20th and December 2nd.

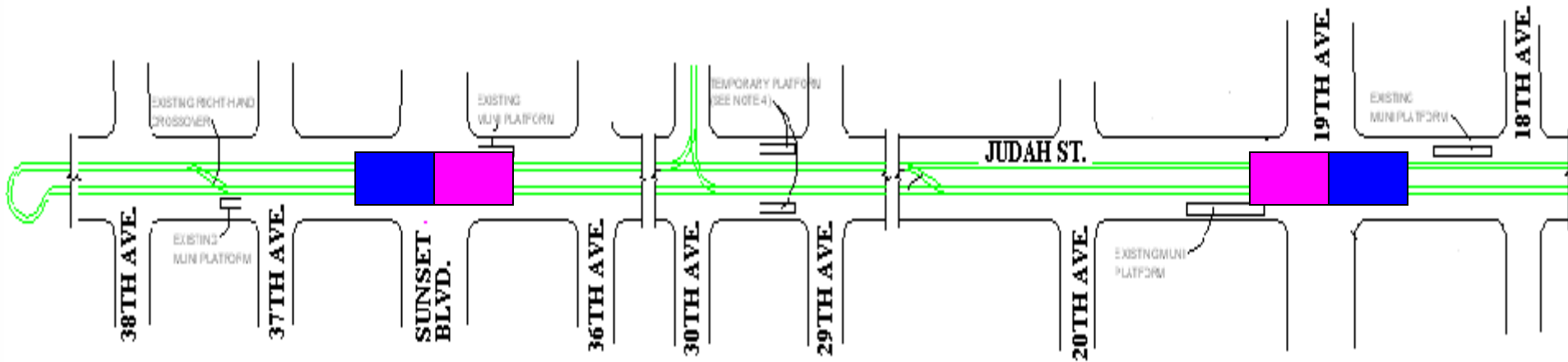
L-Line 3 weekends: Friday 6 p.m. to Monday 4 a.m.

Taraval Street & 19th Avenue

Taraval Street & Sunset Boulevard

Tentatively scheduled construction: January & February 2010

Judah Street (N – Line)



1ST Weekend:

- Remove existing track
- Install utilities
- Install track

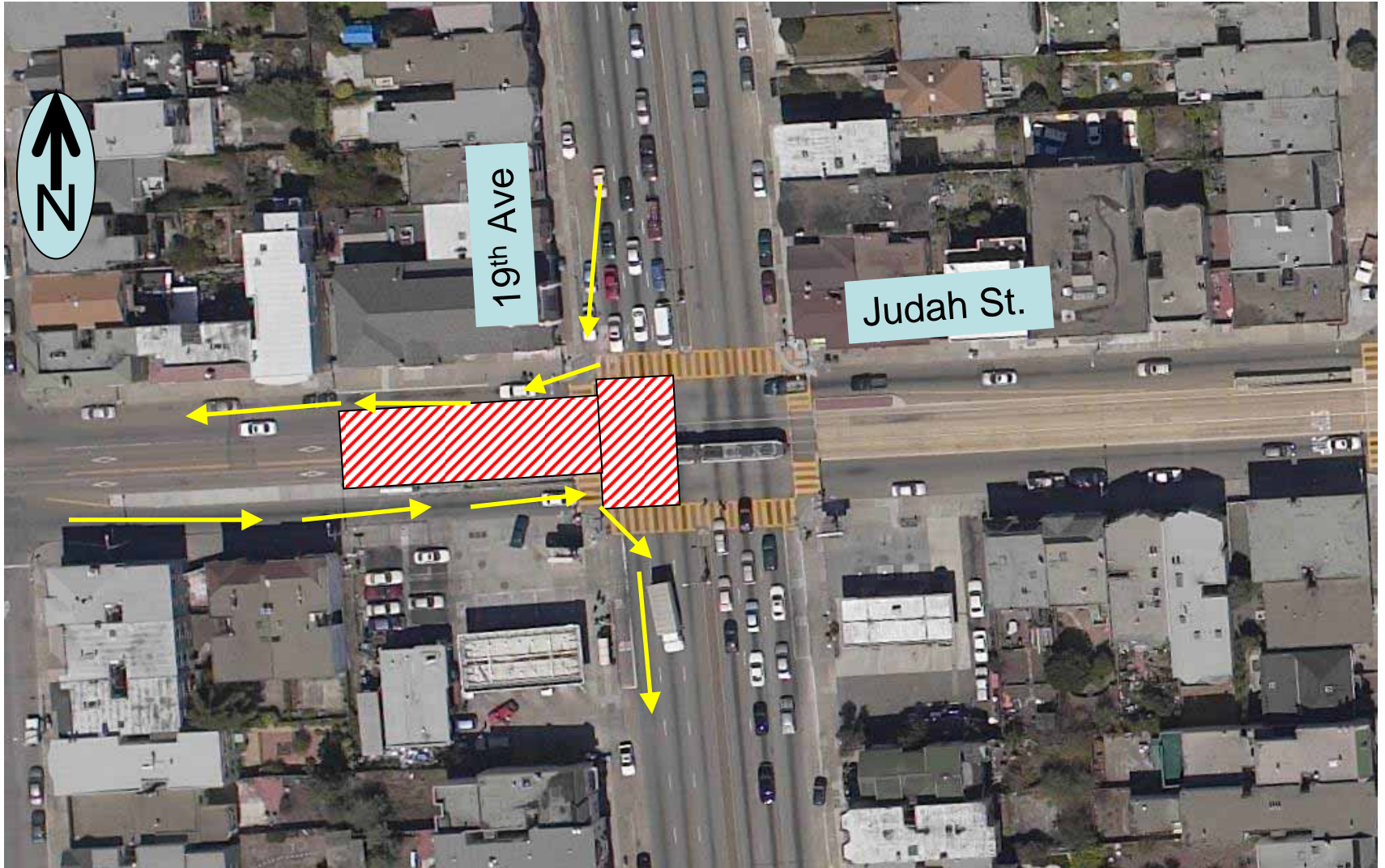
2ND Weekend:

- Remove existing track
- Install utilities
- Install Track

3RD & 4TH Weekends:

- Construct permanent track pavement
- Grind pavement
- Install asphalt concrete pavement

Access for Residents and Businesses Maintained

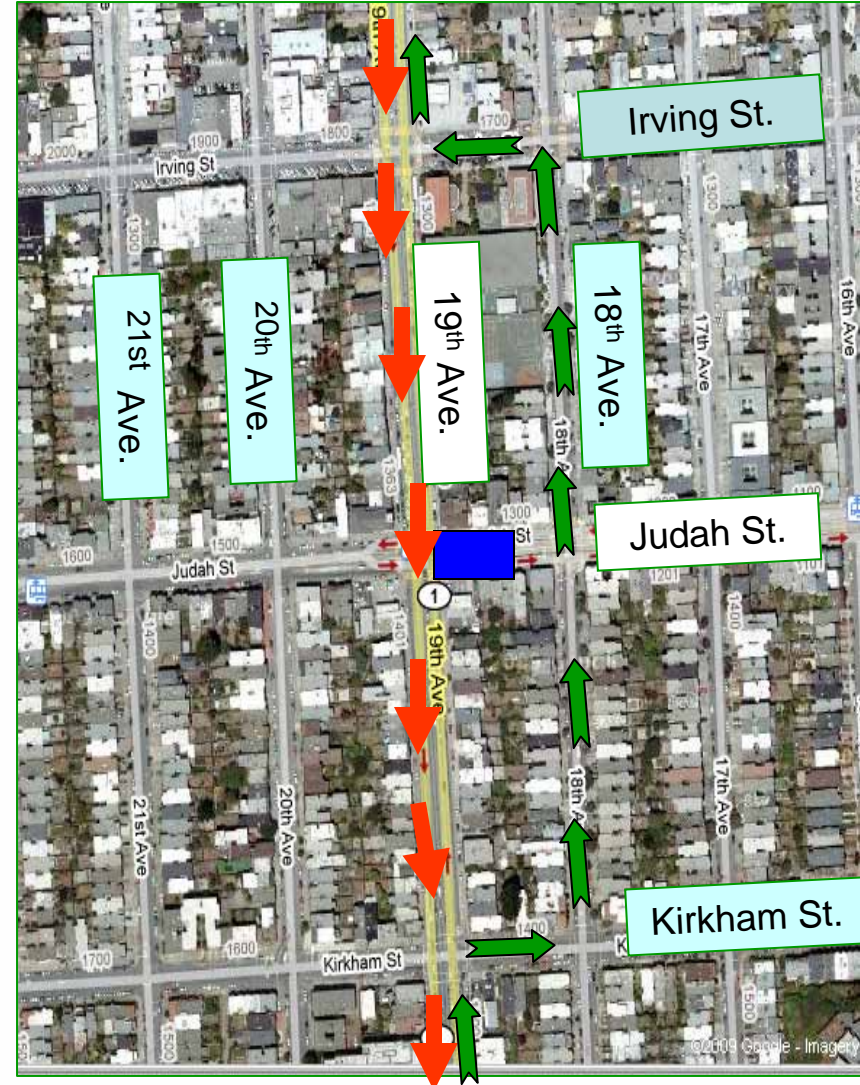


Judah Street Traffic Detour (1st Half)

Southbound

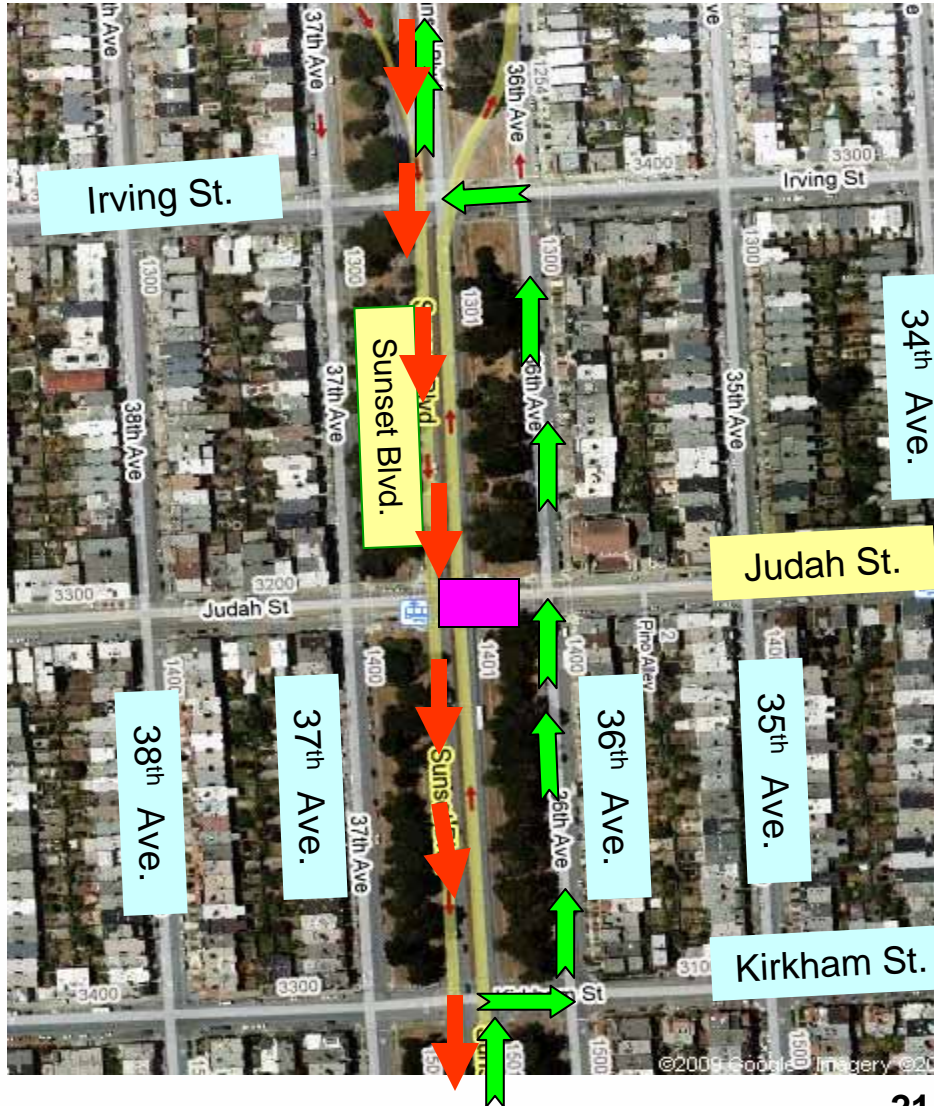


Northbound

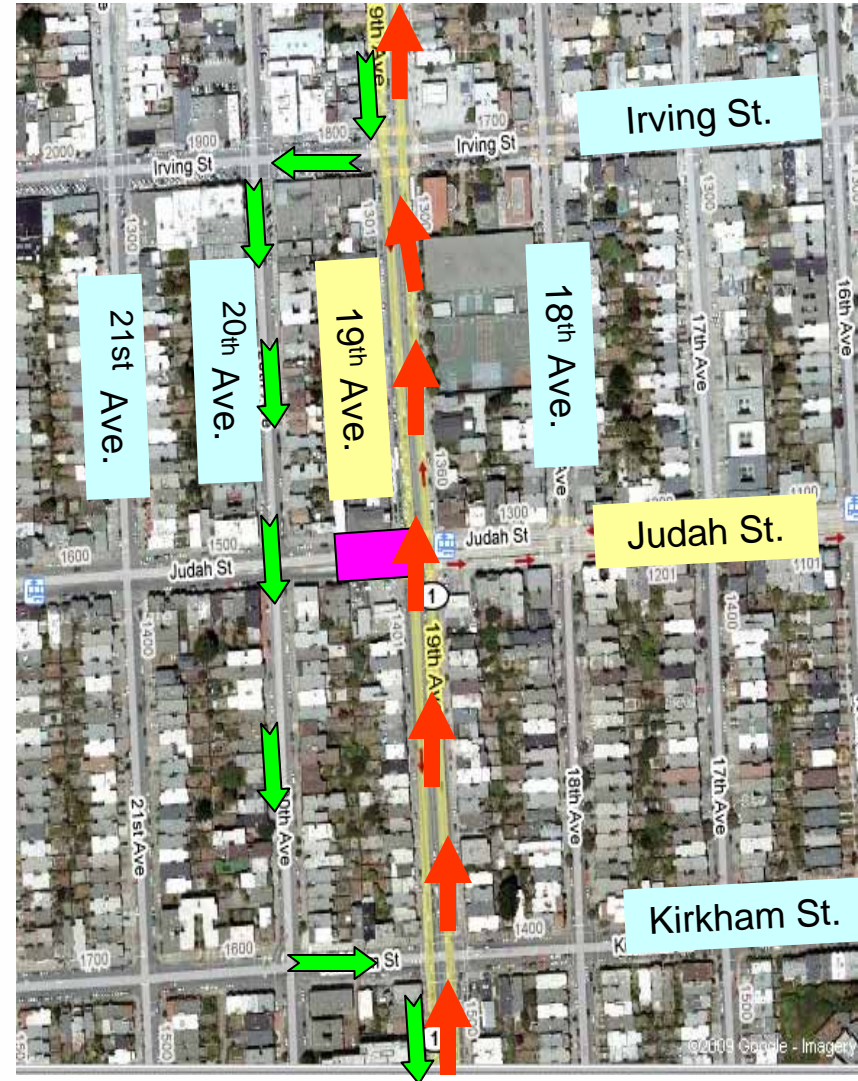


Judah Street Traffic Detour (2nd Half)

Northbound

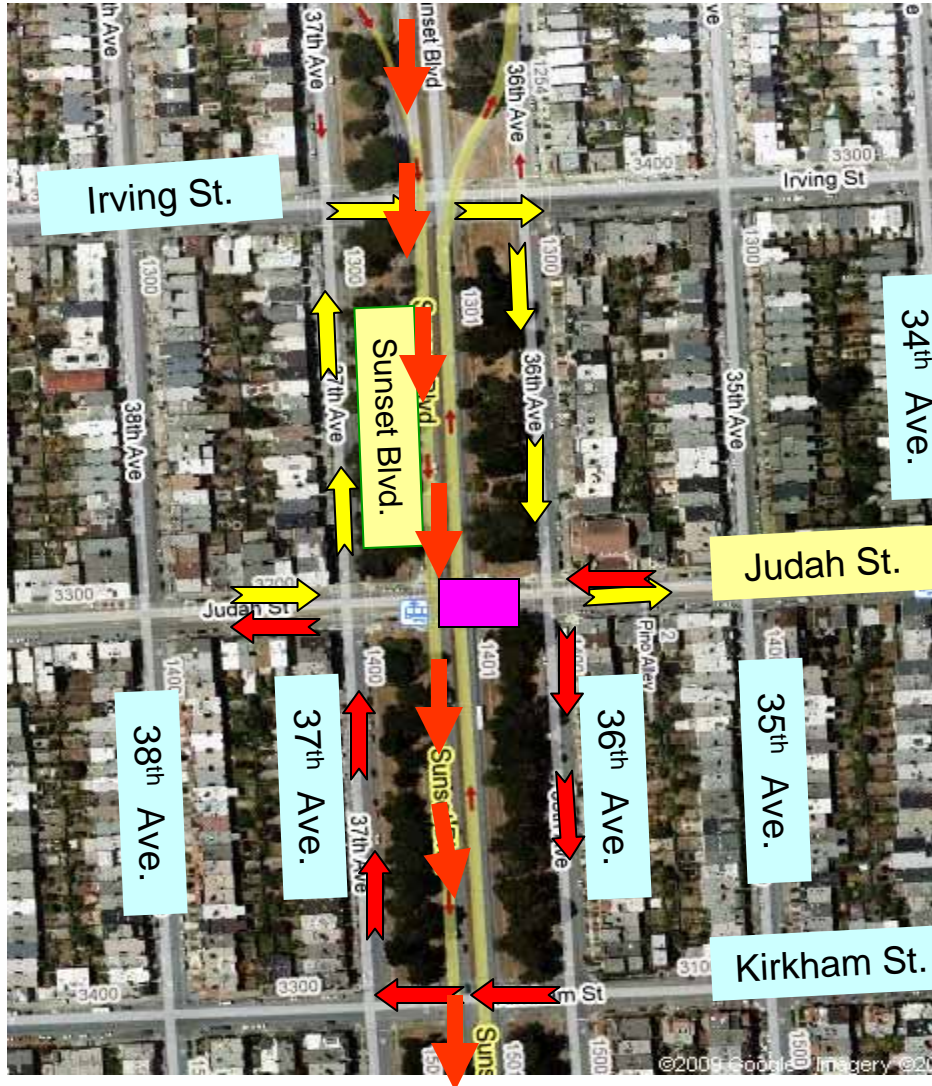


Southbound

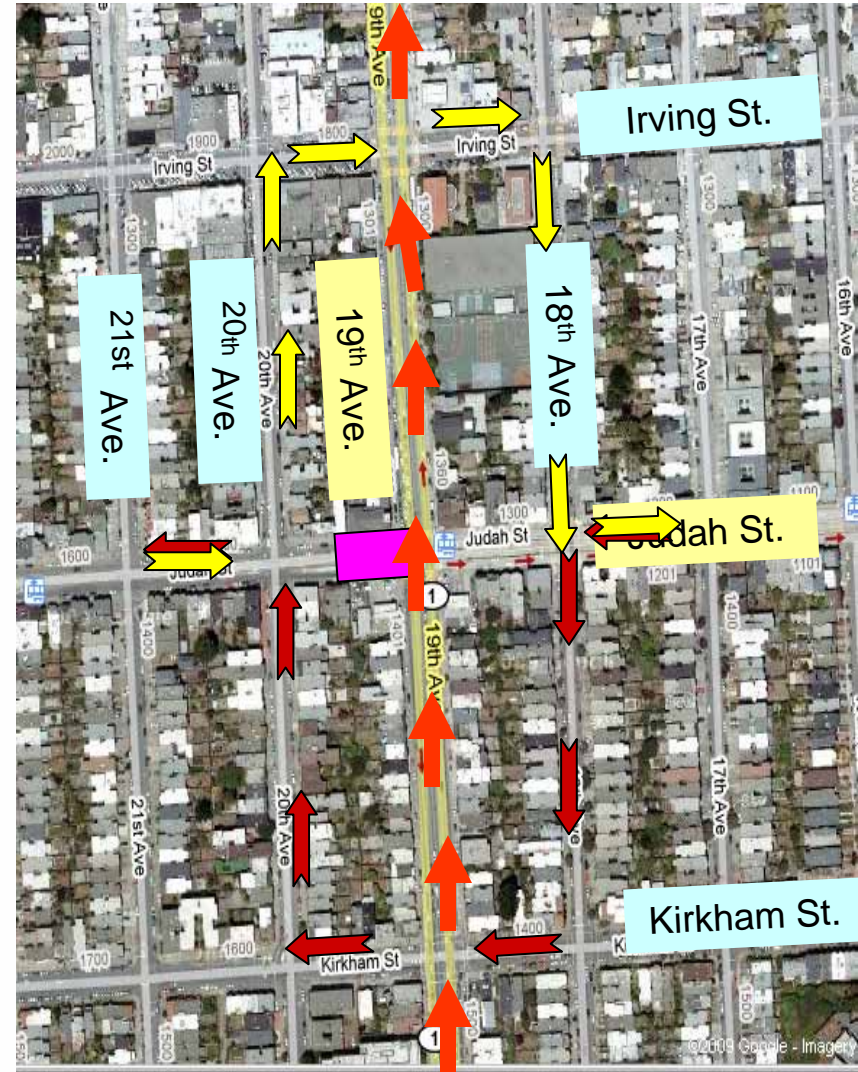


Judah Street Traffic Detour (2nd Half)

Westbound /Eastbound



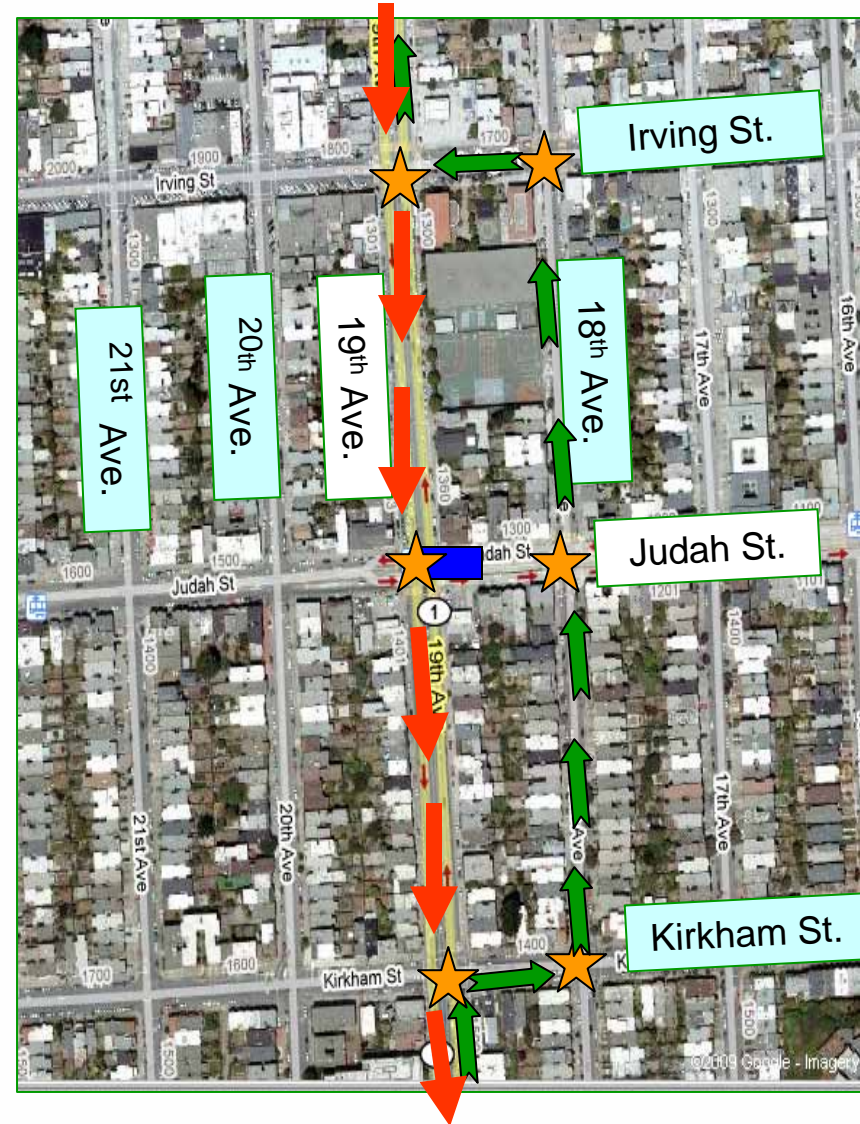
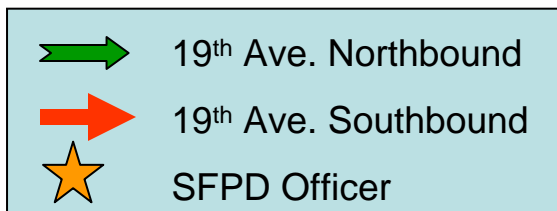
Westbound/Eastbound



Street Traffic Detour Summary

Judah Street & 19TH Avenue

- Friday 6 p.m. to Monday 4 a.m.
- One half of intersection open to traffic; half closed to through traffic
- Detour to the adjacent street
- SFPD to control traffic
- Media outreach & detour signs advising people to take alternate routes
- Parking removed temporarily along detour route



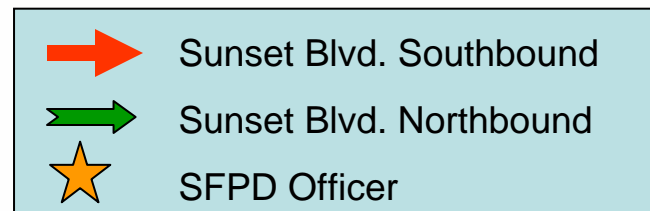
Street Traffic Summary

Southbound

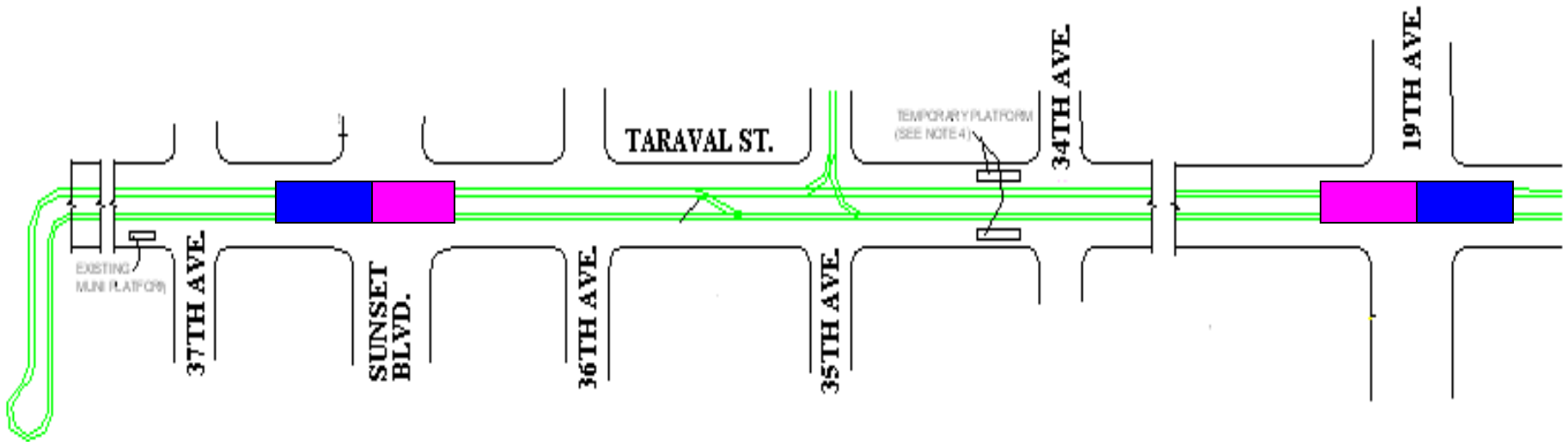


Judah Street & Sunset Blvd.

- Four construction periods
- Friday 6 p.m. to Monday 4 a.m.
- One half of intersection open to traffic; half closed to through traffic
- Detour to the adjacent street
- SFPD to control traffic
- Media outreach & detour signs advising people to take alternate routes
- Parking removed temporarily along detour route



Taraval Street (L – Line)



1ST Weekend:

- Remove existing track
- Install utilities
- Install track

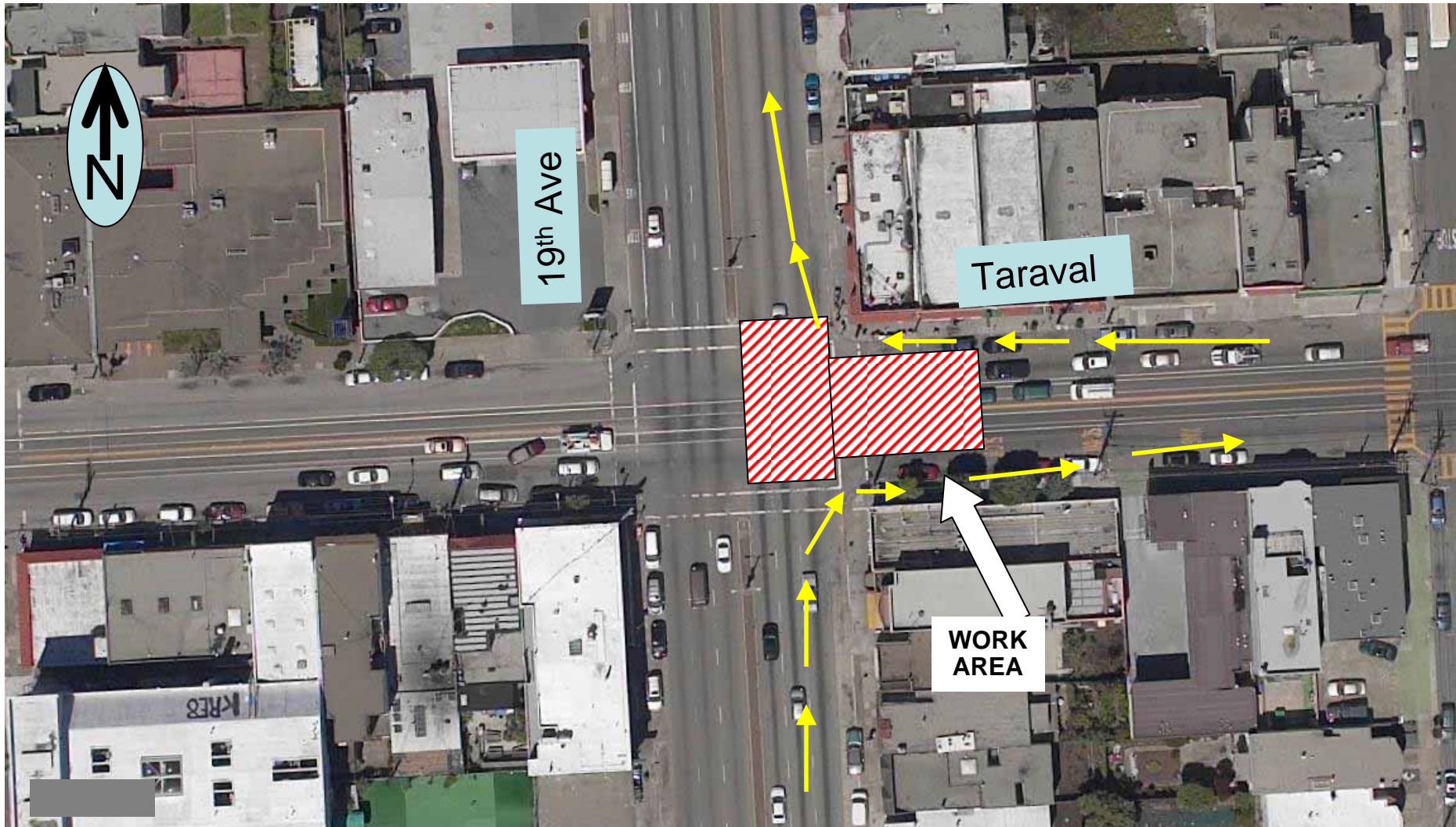
2ND Weekend:

- Remove existing track
- Install utilities
- Install Track

3RD & 4TH Weekends:

- Construct permanent track pavement
- Grind pavement
- Install asphalt concrete pavement

Access for Residents and Businesses Maintained



Taraval Street Traffic Detour (1st Half)

Southbound



Northbound

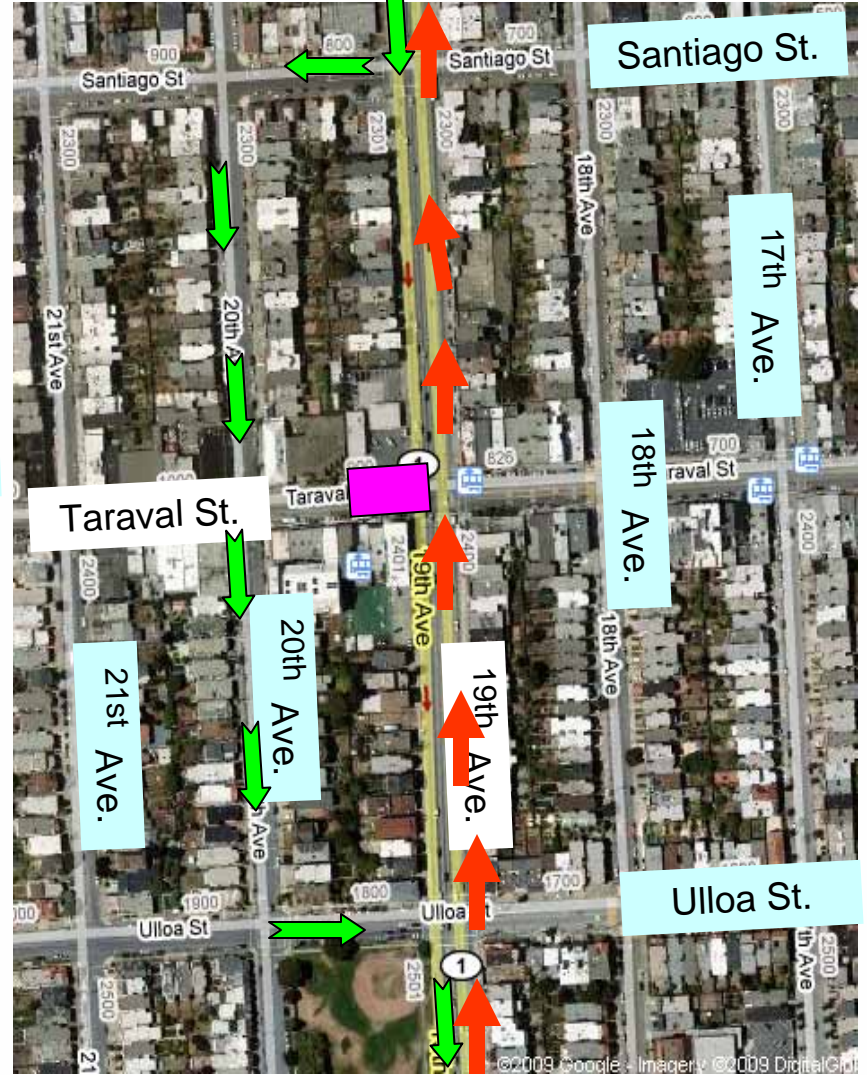


Taraval Street Traffic Detour (2nd Half)

Northbound



Southbound

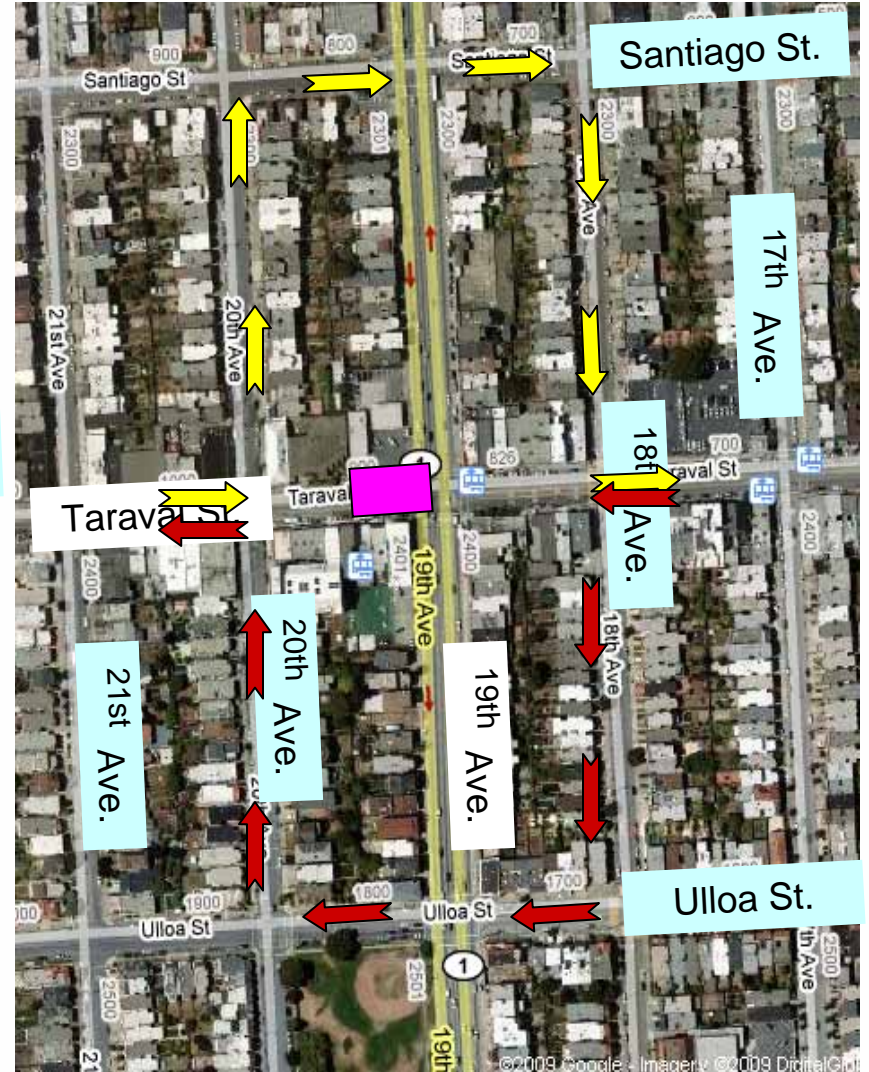


Taraval Street Traffic Detour (2nd Half)

Westbound/Eastbound



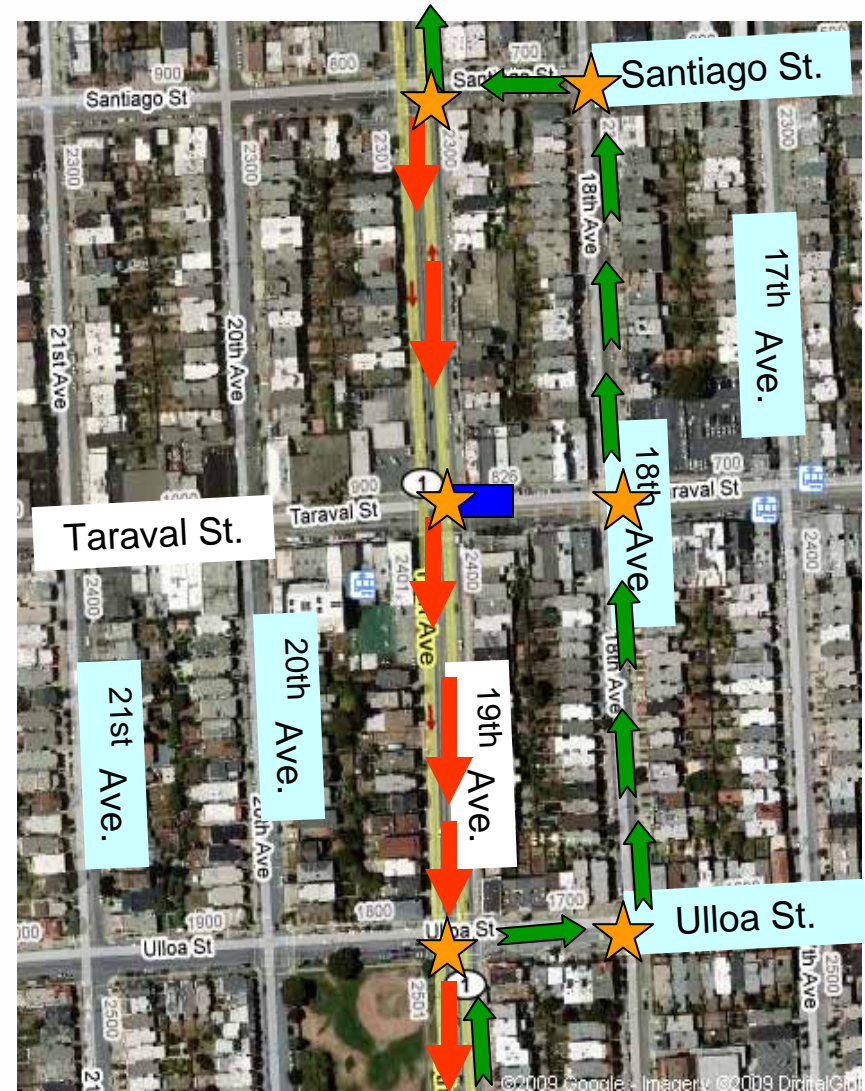
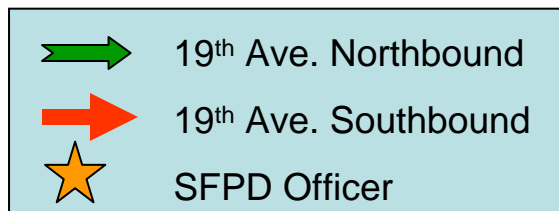
Westbound /Eastbound



Street Traffic Detour Summary

Taraval Street & 19TH Avenue

- Four construction periods
- Friday 6 p.m. to Monday 4 a.m.
- One half of intersection open to traffic; half closed to through traffic
- Detour to the adjacent street
- SFPD to control traffic
- Media outreach & detour Signs advising people to take alternate routes
- Parking removed temporarily along detour route

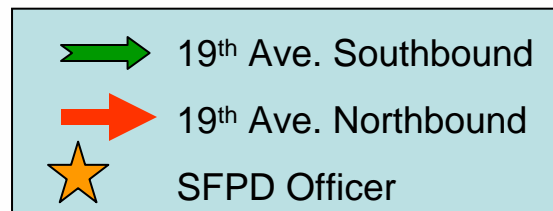


Street Traffic Summary

Taraval Street & Sunset Blvd.

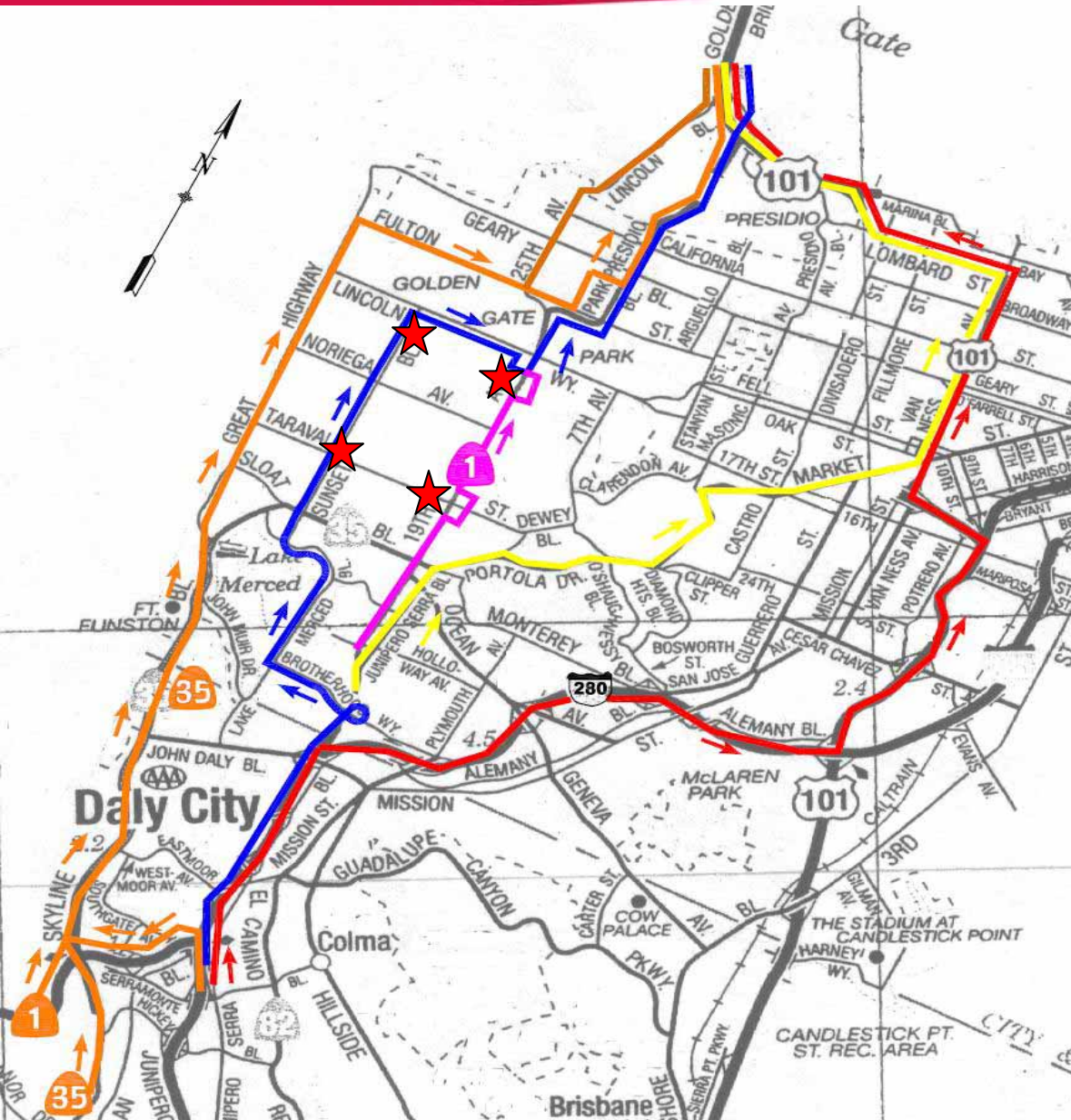


- Four construction periods
- Friday 6 p.m. to Monday 4 a.m.
- One half of intersection open to traffic; half closed to through traffic
- Detour to the adjacent street
- SFPD to control traffic
- Media outreach & detour Signs advising people to take alternate routes
- Parking removed temporarily along detour route



Regional Detours (Northbound)

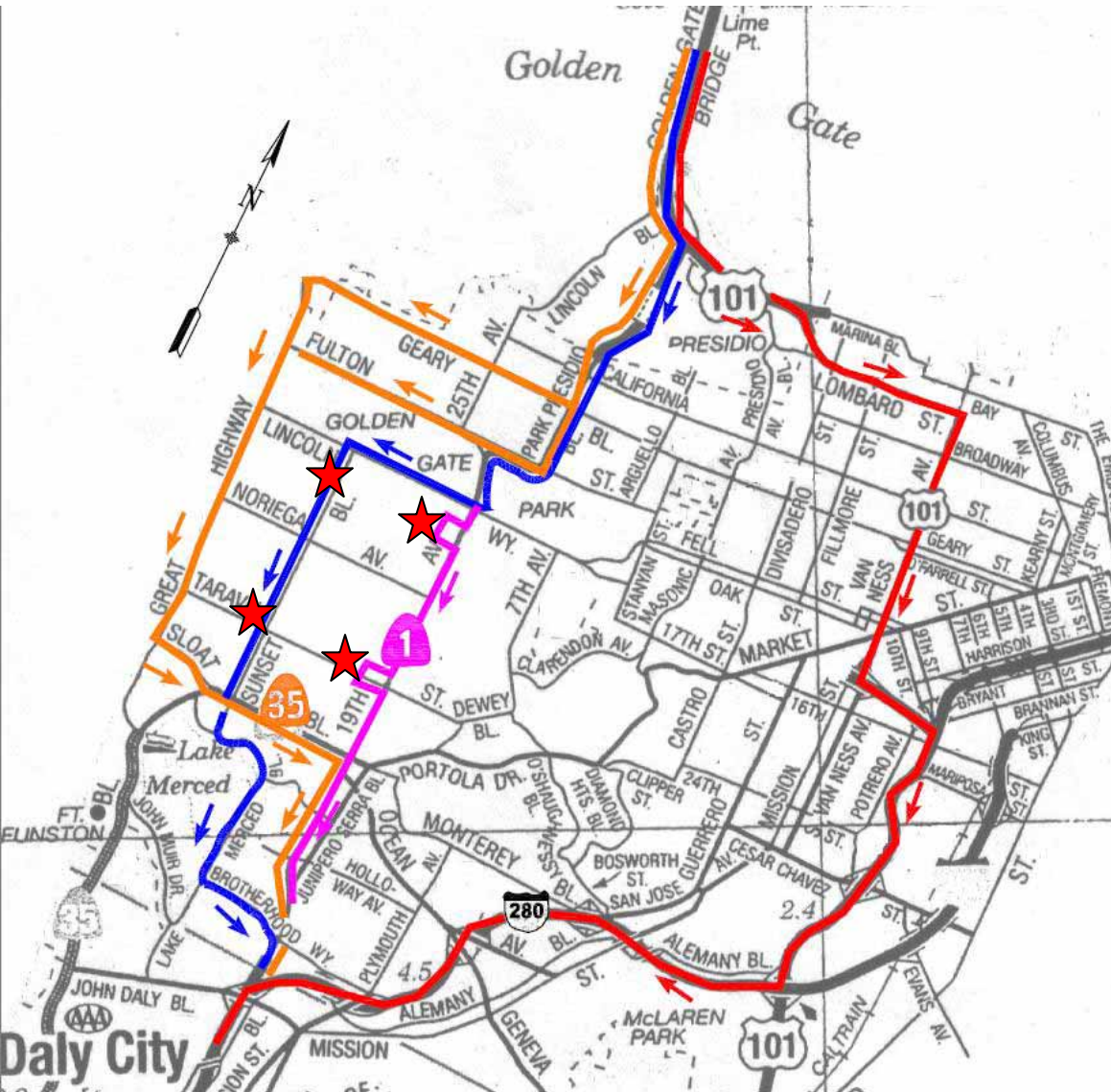
- Great Highway
- Sunset Blvd.
- Portola Drive
- 101 or 280 to Lombard/Franklin
- 19th Ave Local Detour



Basemap Source: California State Automobile Association

Regional Detours (Southbound)

- Great Highway
- Sunset Blvd.
- Lombard/Gough to 101 or 280
- 19th Ave Local Detour

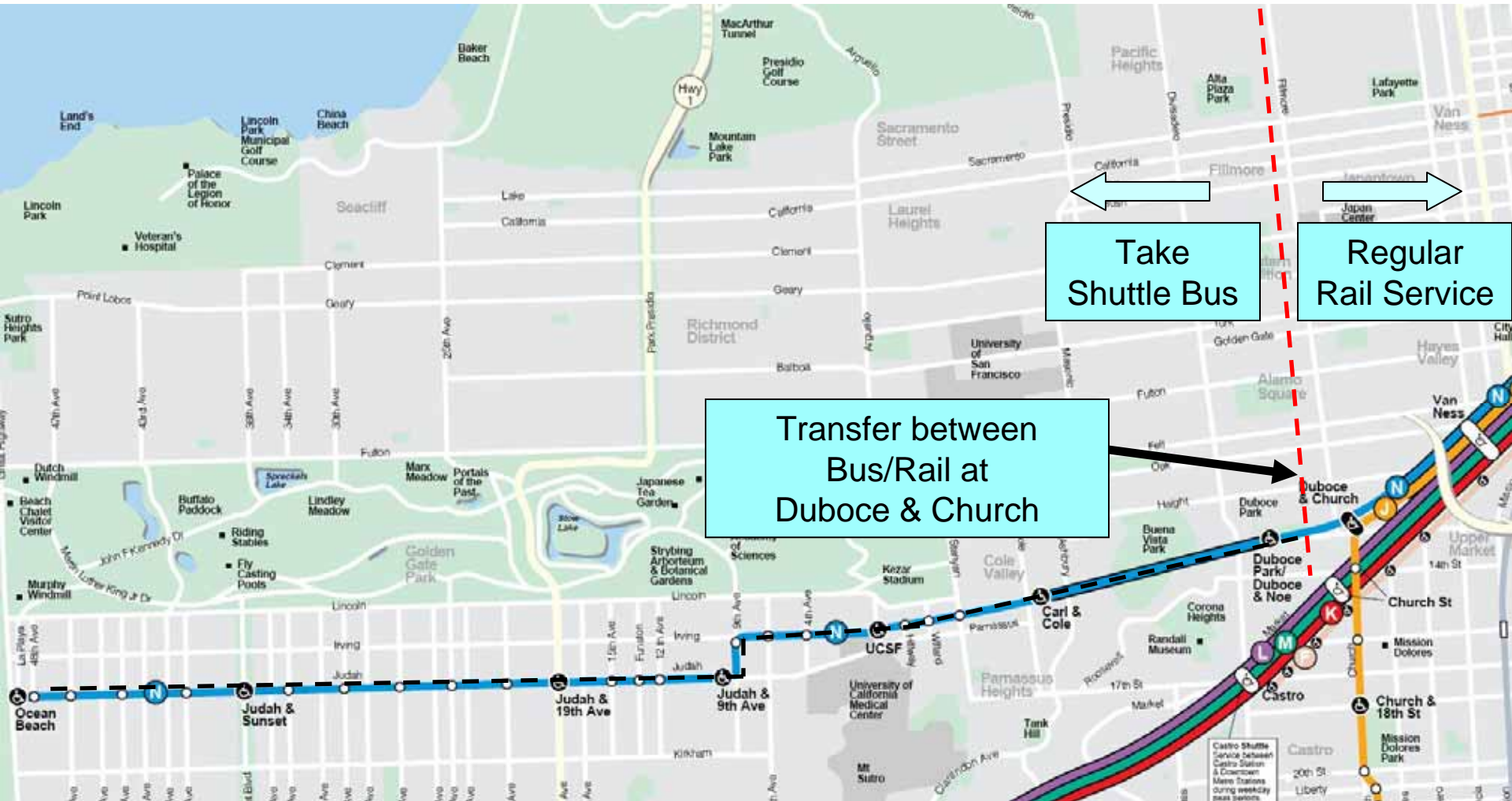


Basemap Source: California State Automobile Association



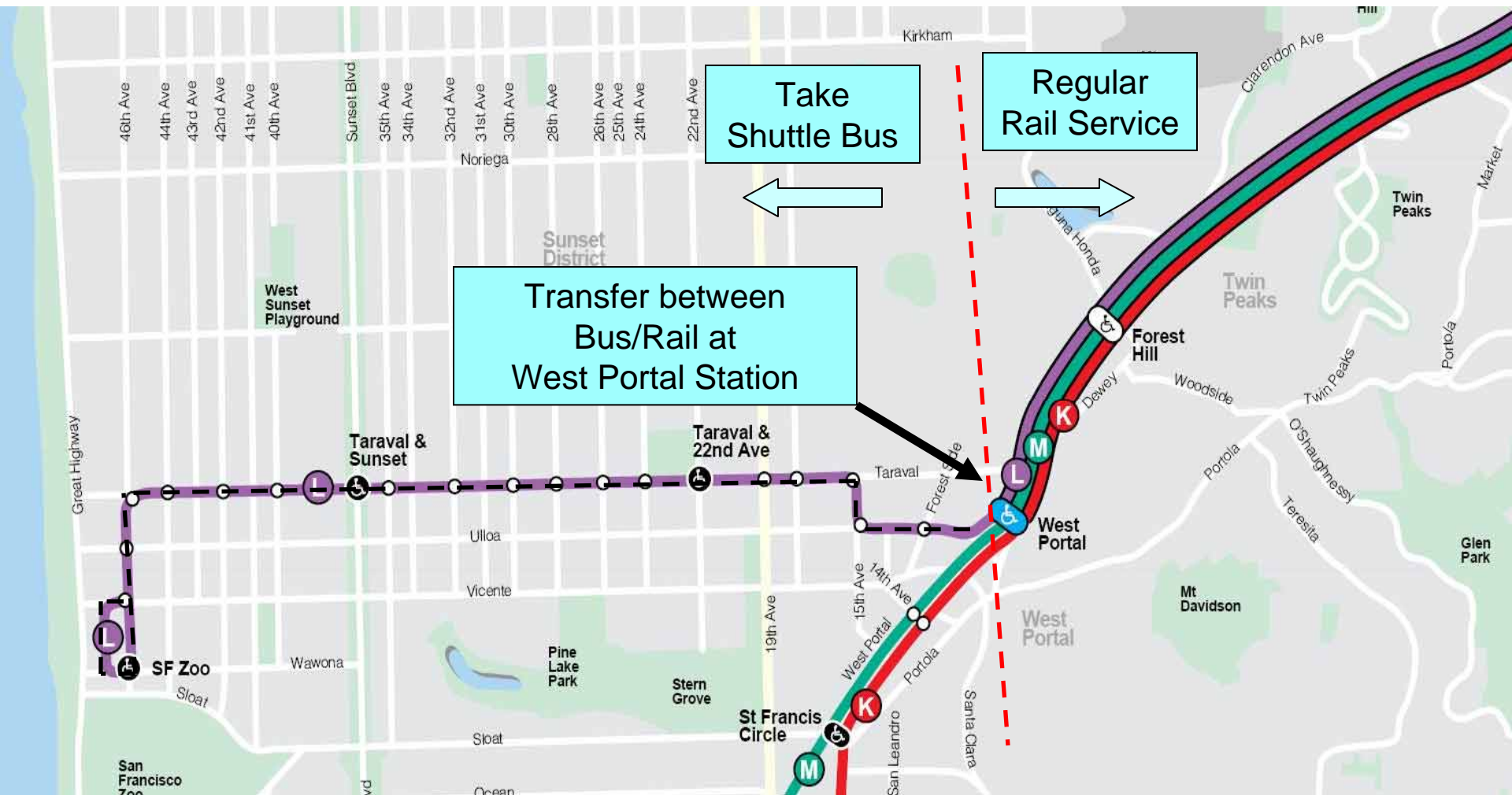
Service Adjustments

Friday 8 p.m. to Monday 4 a.m.



L Service Adjustments

Friday 8 p.m. to Monday 4 a.m.



Service Adjustments

Location	Weekend shutdowns	Days/Hours	Transfer From/To
Judah Street & 19th Avenue (N-line) Judah Street & Sunset Boulevard Tentative schedule: Fall 2009	4	8 p.m. Friday to 4 a.m. Monday	Duboce to Ocean Beach
Taraval Street & 19th Avenue (L-line) Taraval Street & Sunset Boulevard Tentative schedule: Winter 2010	4	8 p.m. Friday to 4 a.m. Monday	West Portal to Zoo
Church Street & 18th Street (J-line) San Jose Avenue & 30th Street Tentative schedule: Spring 2010	3	8 p.m. Friday to 4 a.m. Monday	Duboce to Balboa Park
Church Street & 30th Street (J-line) Tentative schedule: Summer 2010	3	8 p.m. Friday to 4 a.m. Monday	Duboce to Balboa Park

Project Schedule

Construction: 12 months

Start: Fall 2009

Complete: Fall 2010

Project Cost

This project is funded by federal, state and local resources

Total project cost: \$18.5 million