

Background

The SFMTA's Traffic Calming Program is working with residents to improve safety in San Francisco's neighborhoods. The Traffic Calming Program uses combinations of self-enforcing physical measures to improve safety on the streets. One of the corridors that is being addressed is Teresita Boulevard.

Residents on Teresita have expressed interest in reducing speeds and improving pedestrian access while also improving aesthetics where possible. So far, a speed hump has been installed on the 400 block of Teresita and a speed radar sign and temporary traffic island have been installed at the northern intersection with Marietta Drive. The intersection of Teresita Boulevard and Bella Vista Way is the latest piece of this project.

In mid-July a trial island was installed to channelize the traffic at this spacious intersection. After receiving several comments from neighbors, a community meeting was held on August 9, 2008 to discuss the refinement of the design. Based on the input from the community, the test island size was reduced and more components of the island layout were installed. These changes should ease the turn to go uphill from Bella Vista onto Teresita, make the turn into Bella Vista from uphill Teresita a less severe turn, and tighten the travel way for vehicles traveling up and down Teresita.

Update – 10/17/08

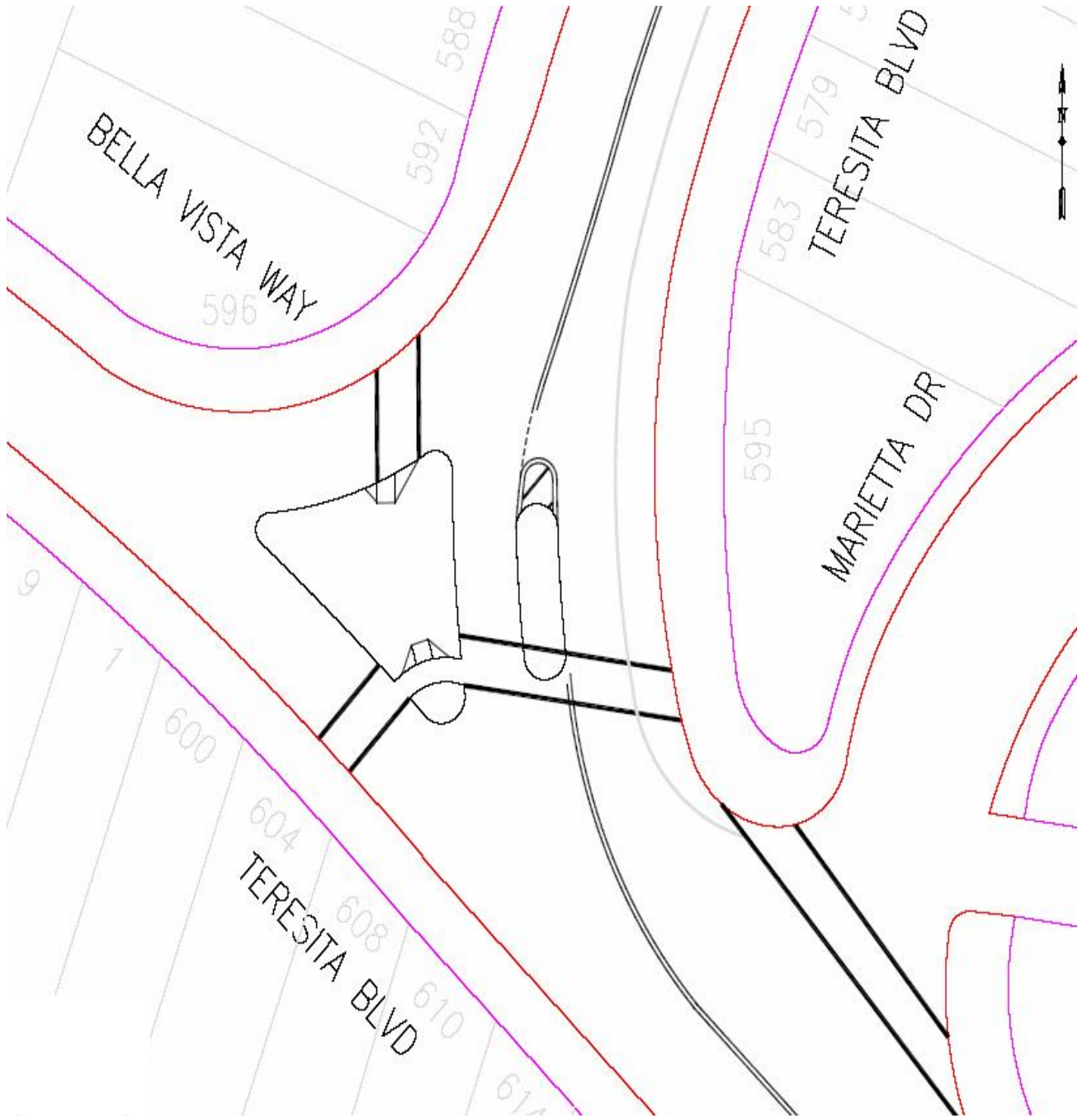
Another community meeting was held on September 25, 2008 to further discuss the design for the intersection. The design below addresses the comments we received from residents, including:

- Better visibility for vehicles traveling uphill on Teresita and turning left onto Bella Vista
- Easier turns for vehicles headed westbound on Bella Vista and turning uphill onto Teresita
- Tightening the path for vehicles going up and down Teresita so that they are forced to slow their speeds as they go around the bend
- Tightening the turn for vehicles turning right from Teresita onto Bella Vista
- Relocating the crosswalks and STOP limit line so that pedestrians and vehicles have better visibility

Construction of the updated proposal is scheduled to begin in October 2008 for the center island and the large triangular island. The island on the east side of Teresita is being studied to see if storm water infiltration and landscaping are possible. In the interim, plastic posts will remain on the white edge line.

If you have any questions or comments about the Teresita – Bella Vista intersection, please contact project manager Dan Provence at (415) 701-4448 or dan.provence@sfmta.com.

Original Proposal



Updated Proposal



** Notes: 1) A STOP sign will also be installed stopping Bella Vista south of the biggest island.
2) Striping and markers will be used so the islands are visible at night and in the fog.