

Edwin M. Lee | Mayor  
 Tom Nolan | Chairman  
 Jerry Lee | Vice-Chairman  
 Cameron Beach | Director  
 Leona Bridges | Director  
 Cheryl Brinkman | Director  
 Malcolm Heinicke | Director  
 Bruce Oka | Director  
 Nathaniel P. Ford Sr. | Executive Director/CEO

April 6<sup>th</sup>, 2011

**Roosevelt Way Traffic Calming between Levant and 15<sup>th</sup> Streets**

Dear Resident,

In response to several traffic calming applications submitted by the community, the San Francisco Municipal Transportation Agency (SFMTA) held a series of community meetings discussing traffic calming in the Buena Vista area. The purpose of the meetings, which began in December 2008, was to introduce traffic calming to the community, obtain input on areas of concern, and present design concepts for various traffic calming measures. Through this community process, SFMTA staff, working with a neighborhood community working group, developed a final area wide traffic calming plan which was presented at a community meeting for adoption. The SFMTA is currently planning on implementing aspects of this plan along Roosevelt Way between Levant Street and 15<sup>th</sup> Street/Park Hill Avenue. Planned traffic calming measures include changes in parking configuration and the installation of several islands designed to encourage increased driver awareness, slow traffic, and increase safety for people walking. A figure of the general layout can be seen below.

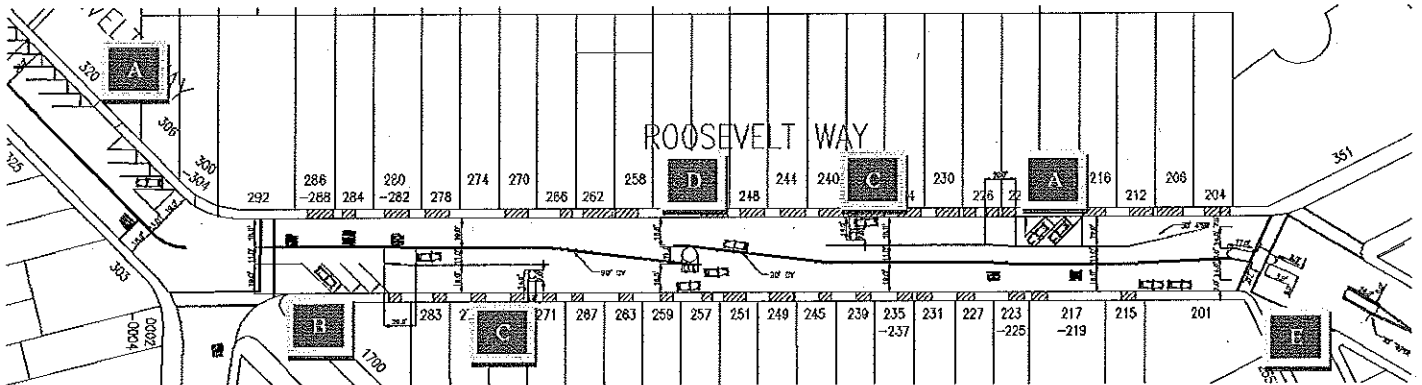


Figure 1: Proposed Changes to Roosevelt between Levant Way and 15th St/Park Hill. See attachment for descriptions.

- A) 45 degree back-in angled parking – Roosevelt Way between Levant Street and Museum Way and fronting 218 Roosevelt Way.
- B) 45 degree angled parking - Roosevelt Way at Museum Way to 70 feet northerly.
- C) Safe-hit post islands - Approximately 90 feet on either side of the center island.
- D) Center island – Midblock of Roosevelt Way between Museum Way and 15<sup>th</sup> Street/Park Hill Avenue.
- E) Pedestrian refuge island and median island – intersection of Roosevelt Way and 15<sup>th</sup> Street/Park Hill Avenue.

Prior to implementing these measures, SFMTA staff must take the proposal through the City's legislative process. This process includes presenting the project to the Transportation

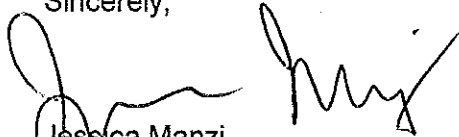
Advisory Staff Committee (TASC) for inter-agency approval, holding a public hearing to obtain comments for support or opposition from local residents, and taking the proposal to the SFMTA Board for final legislative approval.

As a resident who may be affected by this project, the SFMTA wishes to inform you of these proposed changes and invites you to comment on the design. Please keep in mind that the angled parking, safe hit post islands, and center island work together to create a system of physical features that increase the success of the traffic calming. Omitting a component of the design may reduce the effectiveness of the traffic calming. For this reason, we are asking you to consider these proposed devices as a whole package.

The comment period will last for two weeks and end on April 22<sup>nd</sup>. You may contact us by mail, e-mail, or fax (415-701-4343 attn: Will Tabajonda). This deadline allows scheduling for the May 20<sup>th</sup> Public Hearing, and the June 7<sup>th</sup> SFMTA Board meeting. To get more information on the Buena Vista Traffic Calming Project, please visit [www.sfmta.com/calming](http://www.sfmta.com/calming), click on current projects, then Buena Vista/Roosevelt/17<sup>th</sup> Street.

If you have any questions or wish to give your comments, please contact Mr. William Tabajonda by phone at 415-701-4452 or by email at [will.tabajonda@sfmta.com](mailto:will.tabajonda@sfmta.com). We look forward to working with on this project for Roosevelt Way.

Sincerely,



Jessica Manzi  
Manager, Project Development

Attachment: Roosevelt Way Traffic Calming Informational Flier

### A) 45 Degree Parking

Angled parking on the approaches to Roosevelt Way and Museum Way narrows the roadway encouraging drivers to reduce speed through the intersection. The extension of the parking stalls into the roadway provides an added benefit to pedestrians by giving them a clear and visible space while entering the crosswalk.

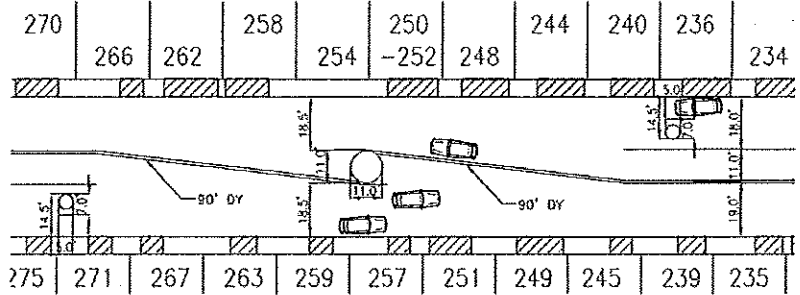


### B) Back-in Angle Parking

Back-in angle parking on the north side of Roosevelt between Museum Way and Levant Street helps narrow the roadway and improves parking operations by orienting vehicles in the nose out position. This orientation increases visibility of oncoming traffic for drivers pulling out of the stall.

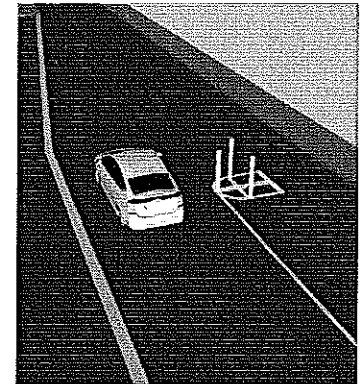
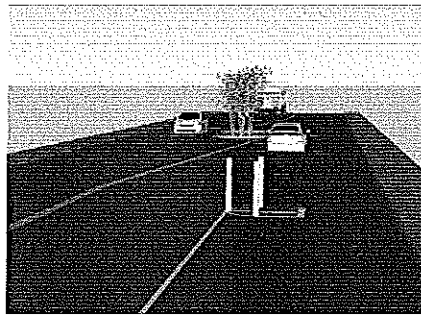
### C) Center Island

The center island between Museum Way and 15<sup>th</sup> Street/Park Hill Avenue aids in transitioning traffic through the horizontal movements of the chicane. The island forces vehicles to shift horizontally while providing a buffer for opposing vehicular traffic.



### D) Safe-Hit Post Island

The safe-hit post islands between Museum Way and 15<sup>th</sup> Street/Park Hill Avenue aid in aligning traffic in preparation for the chicane. These painted islands are placed at specific locations to smoothly guide vehicles through the horizontal shifts. They are designed to maintain curbside parking as well as driveway access. Their placement in the roadway also provides a buffer zone that increases visibility of vehicles exiting driveways.



### E) Intersection Median Island

A pedestrian island at the intersection of Roosevelt Way and 15<sup>th</sup> Street/Park Hill Avenue increases the visibility of pedestrians in the roadway and breaks up the crossing into two phases. Pedestrians can cross half the street, reassess oncoming traffic, and then cross the second half when safe. The placement of the islands in relation to the angled parking helps tighten the turn and slow vehicles through the intersection.

