



**Muni
Service Delivery
Daily Report**

Monday, February 15, 2010





Content

• Not outs for the a.m. rush hour	3
• Not outs for the p.m. rush hour	4
• Daily not outs & RDO report	5
• Accidents & line delays > 20 minutes	6
• Vehicles availability and maintenance reports	
Light Rail Vehicles Count (chart)	9
Light Rail Maintenance Hold	10
Light Rail Maintenance Available	11
Light Rail Maintenance Count	12
Motor & Trolley Buses Pull Outs (chart)	13
Motor & Trolley Buses Pull Outs (details)	14
• Operators absenteeism report	15

Not-Outs: No Operators	Not-Outs: No Equipment	Late Pull- outs: No Operators	Late Pull- outs: No Equipment	Lines affected
---------------------------------------	---------------------------------------	--	--	-----------------------

Runs Not Out and Late Out for Rush Hours

02 16 2010 TUESDAY AM Morning Report

Cable Car	0	0	1	0	
Flynn	6	0	0	0	1x=1, 8x=2, 38=3
Kirkland	12	0	2	0	1x=1, 21=1, 10=1, 12=2, 19=1, 28=2, 43=1, 47=3
Woods	0	0	1	0	
Potrero	7	0	2	1	14=1, 22=1, 24=1, 30=2, 33=1, 49=1
Presidio	9	0	0	0	1=2, 21=3, 30=1, 31=2, 45=1
Green	0	0	2	0	
F line	0	2	0	0	
TOTAL	34	2	8	1	

Special Events

Emergency Equipment Demand - Reason

Division

Number of coaches

0735 HOURS

<i>Not-Outs: No Operators</i>	<i>Not-Outs: No Equipment</i>	<i>Late Pull-outs: No Operators</i>	<i>Late Pull-outs: No Equipment</i>	<i>Afected lines</i>
-------------------------------	-------------------------------	-------------------------------------	-------------------------------------	----------------------

2-15-10 MONDAY AFTERNOON NOLO REPORT

<i>Cable Car</i>	<i>0</i>	<i>0</i>	<i>0</i>	<i>0</i>	
<i>Flynn</i>	<i>8</i>	<i>0</i>	<i>1</i>	<i>0</i>	<i>1=8X 1=9 1=14L 4=38 1=71</i>
<i>Kirkland</i>	<i>1</i>	<i>0</i>	<i>0</i>	<i>0</i>	<i>1=12</i>
<i>Woods</i>	<i>2</i>	<i>0</i>	<i>0</i>	<i>0</i>	<i>1=48 1=52</i>
<i>Potrero</i>	<i>0</i>	<i>0</i>	<i>0</i>	<i>0</i>	
<i>Presidio</i>	<i>3</i>	<i>0</i>	<i>1</i>	<i>0</i>	<i>2=1 1=5</i>
<i>Metro</i>	<i>4</i>	<i>0</i>	<i>0</i>	<i>0</i>	<i>3=L 1=N</i>
<i>F line</i>	<i>1</i>	<i>0</i>	<i>0</i>	<i>0</i>	
TOTAL	19	0	2	0	

Special Events

Emergency Equipment Demand - Reason

Division

Number of coaches

REPORT DATA COMPILED AS OF 1600 HRS

	Runs Missed	RDO	Missed Runs %	Daily Runs Scheduled	Daily Runs Missed	Daily RDO	Daily Pulled Out Runs %
Missed Service By Division Due To No Regular Day Off (RDO)							
Monday, FEBRUARY 15, 2010							
SIGN UP DEC 2009							
Cable Car one-piece	0	2	0.0%	46	0	2	100.0%
Cable Car multi-piece	0		0.0%				
Flynn one-piece	5	0	13.2%	132	7	0	94.7%
Flynn multi-piece	4		5.9%				
Kirkland one-piece	1	0	1.8%	123	2	0	98.4%
Kirkland multi-piece	2		2.0%				
Woods one-piece	0	0	0.0%	132	0	0	100.0%
Woods multi-piece	0		0.0%				
Potrero one-piece	0	0	0.0%	141	0	0	100.0%
Potrero multi-piece	0		0.0%				
Presidio one-piece	4	0	7.7%	130	5	0	96.2%
Presidio multi-piece	2		2.4%				
Metro one-piece	2	4	3.0%	99	2	4	98.0%
Metro multi-piece	0		0.0%				
F Line one-piece	2	2	20.0%	30	2	2	93.3%
F Line multi-piece	0		0.0%				
System total				833	18	8	97.8%

Accidents

Mon Feb 15, 2010

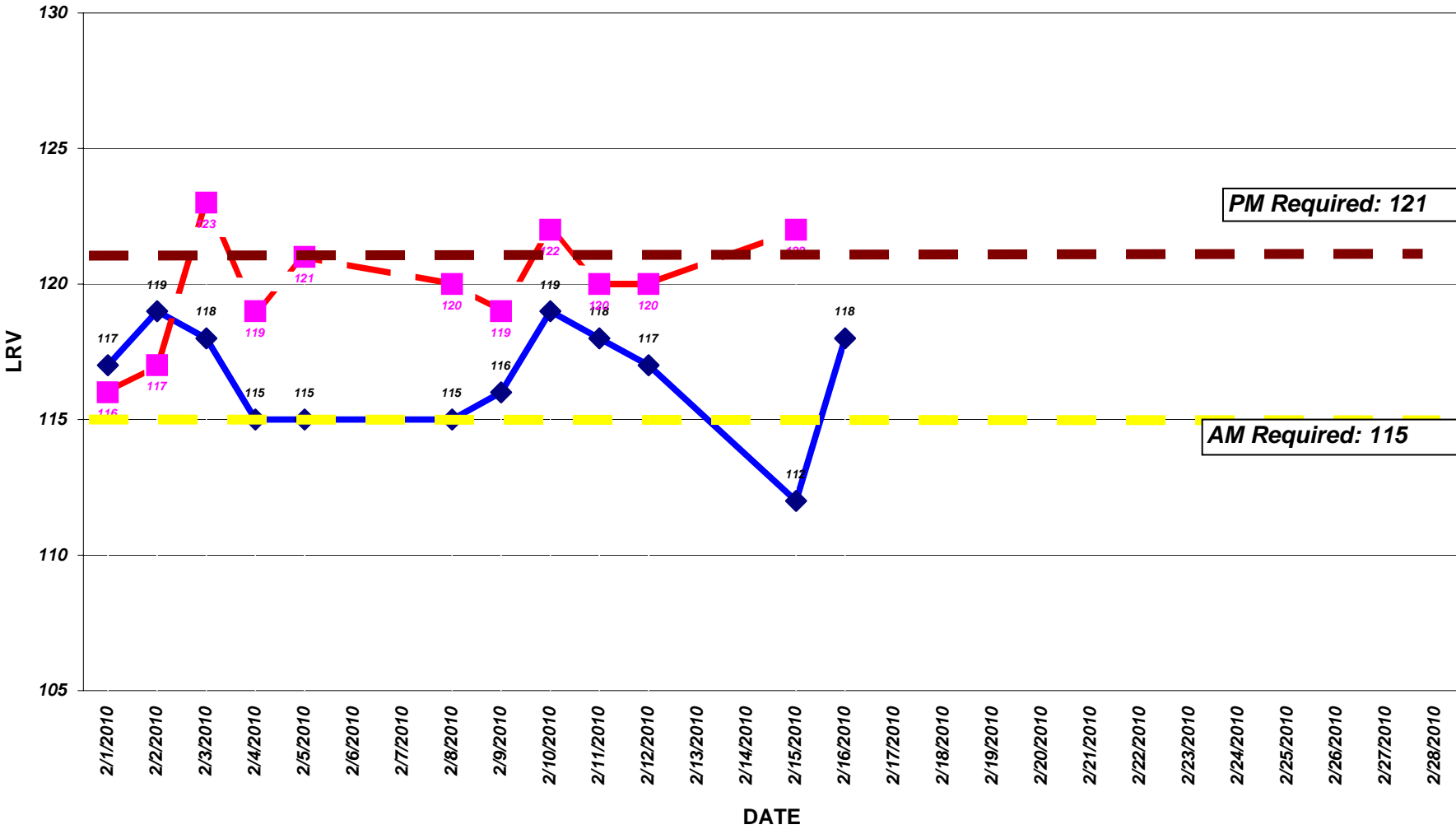
TIME DATE	CALL FROM DIVISION	TO CC	OP#	RUN	LINE	VEH	LOCATION	NATURE OF OCCURRENCE ACTION TAKEN	DELAY			
									DI	START	END	CC
16:49 02/15/10	R OPERATOR PO	38	3735	441	49	7124	MISSION & 24TH STREET (OB)	UNID. MALE SELLING LATE NIGHT TRANSFERS ON STREET CORNER	OB	16:49		38
							1092296	SFPD*; INSP. G. LAVIGNE*; MALE BLACK ADULT 23-26 YRS. 6^0^, BLK. JKT., BLUE JEANS SELLING LATE NIGHT TRANSFERS ON STREET CORNER.				
16:55 02/15/10	R OPERATOR WO	27	3523	189	27	8419	DALY CITY BART (OB)	VEHICLE ACCIDENT COACH / OVERPASS	OB	16:55	18:28	15
							1092311	INSP L SMITH; CLAIMS 6-A-40*, SYSTEM SAFETY*, BART POLICE 1-B-42; CASE# 10021483, VIDEO*, NO INJURIES / NO 799 VEH DELAY: 01:33				
18:51 02/15/10	R OPERATOR PO	24	3838	457	22	5466	FILLMORE & UNION (OB)	PEDESTRIAN COLLISION	OB	18:51	20:20	25
							1092330	INSPS D FONG, L WILSON; SENIOR STAFF*, SYSTEM SAFETY*, CLAIMS 6-A-50*, VIDEO*, MEDIC#58 TRANS. PEDESTRIAN TO SFGH FOR UPPER CHEST INJURY. OPERATOR WAS 799, SEE REPORT FOR FURTHER DETAILS SI POTRERO N/R [EOR 23:11] VEH DELAY: 04:20				

Line Delays \geq 20 Minutes

TIME DATE	CALL FROM DIVISION	TO CC	OP#	RUN	LINE	VEH	LOCATION	NATURE OF OCCURRENCE ACTION TAKEN	DELAY			
									DI	START	END	CC
05:57 02/15/10	R OPERATOR GV	72	1634	152	F	1062	EMBARCADERO & BAY STREET (IB)	NO POWER	IB	05:57	09:45	23
							1092243	RESUE CAR RUN 154/F/1050 DEAD TOW TO MINT YARD. 4-S-26 AND PCC SHOP REPAIRED, INSP. 4-T-40A DONALDSON,R. ASSISTED. SI D/H OUT OF SERVICE TO BANK @ MRKT/11TH. VEH DELAY: 03:48 LINE DELAY: 01:05				
11:25 02/15/10	R OPERATOR GV	23	1583	177	F	1814	17TH. STREET & CASTRO STREET (IB)	NO POWER / NO FORWARD MOTION	IB	11:20		23
							1092293	INSP. 4-C-55 PINTO RESP., 4-S-43 RESP., F-LINE INBOUND RE-ROUTE IN EFFECT, S/B O/B TO I/B AT NOE STREET & 17TH. STREET. SI OUT OF SERVICE TO GREEN N/R [EOR 13:24] VEH DELAY: 02:04 LINE DELAY: 00:30				
11:31 02/15/10	R OPERATOR GV	23	2604	164	F	1859	MARKET STREET & 3RD. STREET (OB)	NO POWER / NO FORWARD MOTION / DEAD HEAD ORDERS TO CLEAR THE DELAY AFTER REGAINING POWER	OB	11:21		23
							1092291	PCC SHOP RESP. & CLEARED, INSP. 4-C-55A PINTO RESP. TO ASSIST, F-LINE CARS RE-ROUTE S/B O/B TO I/B AT THE FERRY TERMINAL, I/B TO O/B AT MARKET AND 11TH. STREET LSGP*, SI, N/R EOR SI OUT OF SERVICE TO GREEN N/R [EOR 13:37] VEH DELAY: 02:16 LINE DELAY: 01:08				

TIME DATE	CALL FROM DIVISION	TO CC	OP#	RUN	LINE	VEH	LOCATION	NATURE OF OCCURRENCE ACTION TAKEN	DELAY			
									DI	START	END	CC
21:07 02/15/10	R OPERATOR ME	77	2924	119	K	1544	3RD STREET & REVERE (OB)	BLOCKED BY POLICE ACTIVITY (SHOOTING)	OB 21:07 LD 21:07	23:11	23:11	86
							1092334	SFPD STREET CLOSURE DUE TO SHOOTING. BOTH IB AND OB CLOSED TO T-LINE. INSP.WELLS*, INSP.CASTILLO*, INSP.MCCRAY, INSP.GONZALEZ*. INSP.MCGEHEE CLEARED. T-LINE SWITCHBACK AT 3RD STREET & EVANS IB-OB. OUTBOUND TRAINS HELD AT BAYSHORE & SUNNYDALE. OPERATORS & PASSENGERS NOTIFIED. LSGP*. 1 SHUTTLE. 311 CALL CENTER*, T.KENNEDY*, J.TRUE*, J.KELLY*, Y.KWAN*. SENIOR STAFF/SAFETY/RAILS* UPAGED. VEH DELAY: 02:04 LINE DELAY: 02:04				
21:14 02/15/10	R OPERATOR ME	85	1582	103	K	1444	3RD STREET & PALOU (IB)	BLOCKED BY POLICE ACTIVITY	IB 21:14 LD 21:07	21:25	23:11	86
							1092333	INSP.MCGEHEE CLEARED. REVERSED RUN BACK TO EVANS STREET & SWITCHED BACK. SEE CENTRAL TAG INCIDENT#1092334. VEH DELAY: 00:11 LINE DELAY: 02:04				

LIGHT RAIL VEHICLES AM/PM Required & Availability



◆ AM Availability ■ PM Availability

PM Required: 121

AM Required: 115

