



**Muni  
Service Delivery  
Daily Report**

Tuesday, May 25, 2010





## Content

• Not outs for the a.m. rush hour	3
• Not outs for the p.m. rush hour	4
• Daily not outs & RDO report	5
• Accidents & line delays > 20 minutes	6
• Vehicles availability and maintenance reports	
Light Rail Vehicles Count (chart)	8
Light Rail Maintenance Hold	9
Light Rail Maintenance Available	10
Light Rail Maintenance Count	11
Motor & Trolley Buses Pull Outs (chart)	12
Motor & Trolley Buses Pull Outs (details)	13
• Operators absenteeism report	14

<b>Not-Outs: No Operators</b>	<b>Not-Outs: No Equipment</b>	<b>Late Pull- outs: No Operators</b>	<b>Late Pull- outs: No Equipment</b>	<b>Lines affected</b>
---------------------------------------	---------------------------------------	--	--	-----------------------

**Runs Not Out and Late Out for Rush Hours**

**05 26 2010 WEDNESDAY MORNING REPORT**

<b>Cable Car</b>	0	0	0	0	
<b>Flynn</b>	0	0	0	0	
<b>Kirkland</b>	1	0	0	0	28=1
<b>Woods</b>	2	0	0	0	44=1, 54=1
<b>Potrero</b>	0	0	0	1	
<b>Presidio</b>	0	0	0	0	
<b>Green</b>	0	0	0	0	
<b>F line</b>	0	0	0	0	
<b>TOTAL</b>	3	0	0	1	

<b>Special Events</b>
<b>Emergency Equipment Demand - Reason</b>
Division
Number of coaches
Report data compiled as of - 0735 HOURS (TIME)

<b>Not-Outs: No Operators</b>	<b>Not-Outs: No Equipment</b>	<b>Late Pull-outs: No Operators</b>	<b>Late Pull-outs: No Equipment</b>	<b>Afected lines</b>
-------------------------------	-------------------------------	-------------------------------------	-------------------------------------	----------------------

**05 25 10 TUESDAY PM NOLO REPORT**

<b>Cable Car</b>	1	0	0	0	60=1
<b>Flynn</b>	0	0	0	0	
<b>Kirkland</b>	5	0	0	0	10=1 19=2 47=2
<b>Woods</b>	0	0	1	0	
<b>Potrero</b>	4	0	1	1	6=2 14=2
<b>Presidio</b>	3	0	0	0	3=1 21=2
<b>Metro</b>	4	0	0	0	S=3 N=1
<b>F line</b>	0	0	0	0	
<b>TOTAL</b>	17	0	2	1	

**Special Events**

Emergency Equipment Demand - Reason

Division

Number of coaches

**REPORT DATA COMPILED AS OF 1600 HRS**

	Runs Missed	RDO	Missed Runs %	Daily Runs Scheduled	Daily Runs Missed	Daily RDO	Daily Pulled Out Runs %
<b>Missed Service By Division Due To No Regular Day Off (RDO)</b>							
TUESDAY, MAY 25, 2010							
SIGN UP MAY 2010							
<b>Cable Car one-piece</b>	1	0	4.5%	49	1	0	98.0%
<b>Cable Car multi-piece</b>	0		0.0%				
<b>Flynn one-piece</b>	0	9	0.0%	154	0	9	100.0%
<b>Flynn multi-piece</b>	0		0.0%				
<b>Kirkland one-piece</b>	3	4	5.3%	189	3	4	98.4%
<b>Kirkland multi-piece</b>	0		0.0%				
<b>Woods one-piece</b>	0	6	0.0%	262	0	6	100.0%
<b>Woods multi-piece</b>	0		0.0%				
<b>Potrero one-piece</b>	1	0	1.5%	181	1	0	99.4%
<b>Potrero multi-piece</b>	0		0.0%				
<b>Presidio one-piece</b>	1	6	1.9%	161	1	6	99.4%
<b>Presidio multi-piece</b>	0		0.0%				
<b>Metro one-piece</b>	3	2	4.5%	151	3	2	98.0%
<b>Metro multi-piece</b>	0		0.0%				
<b>F Line one-piece</b>	0	4	0.0%	32	0	4	100.0%
<b>F Line multi-piece</b>	0		0.0%				
<b>System total</b>				<b>1179</b>	<b>9</b>	<b>31</b>	<b>99.2%</b>

# Accidents

Tue May 25, 2010

TIME DATE	CALL FROM DIVISION	TO CC	OP#	RUN	LINE	VEH	LOCATION	NATURE OF OCCURRENCE ACTION TAKEN	DELAY			
									DI	START	END	CC
00:56 05/25/10	R OPERATOR ME	86	2647	116	J	1414	MMT (IB,OB)	MAN WALKING IB ON THE OB TRACK TO FERRY (INTRUDER)	IB LD	00:56 00:56	01:10 01:10	13
							1108679	INTOXICATED MALE WALKED FROM EMB TO FERY IN THE SUBWAY, SFPD*, ON ARREST, CAD#128, INSP M. MC.GEHEE ALL TRAIN STOPPED UNTIL THE MAN WALKED OUT OF SUBWAY VEH DELAY: 00:14 LINE DELAY: 00:14				
06:29 05/25/10	R KARL - PCC SH GV	72	3380	160	F	1007	GENEVA YARD & TRACK #2 (PO)	ACCIDENT, PCC & CONSTRUCTION CONTRACTOR TRUCK, MINOR DAMAGE.	PO	06:29	06:55	87
							1108760	INSP G WILLIAMS CLRD, TRAIN REMOVED FROM SERVICE FOR BROKEN WINDOW SECTION FRONT DOOR, MGR C CARRILLO*, K ANDERSON(SYSTEM SAFETY)*, INSP R AREVALO ON SCENE. SS/SAFETY & RAILS* BY PHONE & PAGE. CT 1077 @08:03 VEH DELAY: 01:34				
11:58 05/25/10	R OPERATOR PO	39	2022	311	14	7007	MISSION & 19TH ST (IB)	ACCIDENT, COACH / VAN NO INJURY MODERATE TO VAN, COACH MIRROR	IB	11:58	12:45	35
							1108804	INSP K.JOMOC. SYSTEM SAFETY* NO 799 VEH DELAY: 00:47				
13:49 05/25/10	R OPERATOR PO	39	1782	341	6	5468	MARKET & KEARNY (OB)	PEDESTRIAN COLLISION	OB	13:49		11
							1108827	OPERATOR CLEARED AID REFUSED ( PERSON CROSSING STREET,FELL MADE CONTACT WITH COACH) MALE RAN AWAY, SEE INTERVIEW TAG				

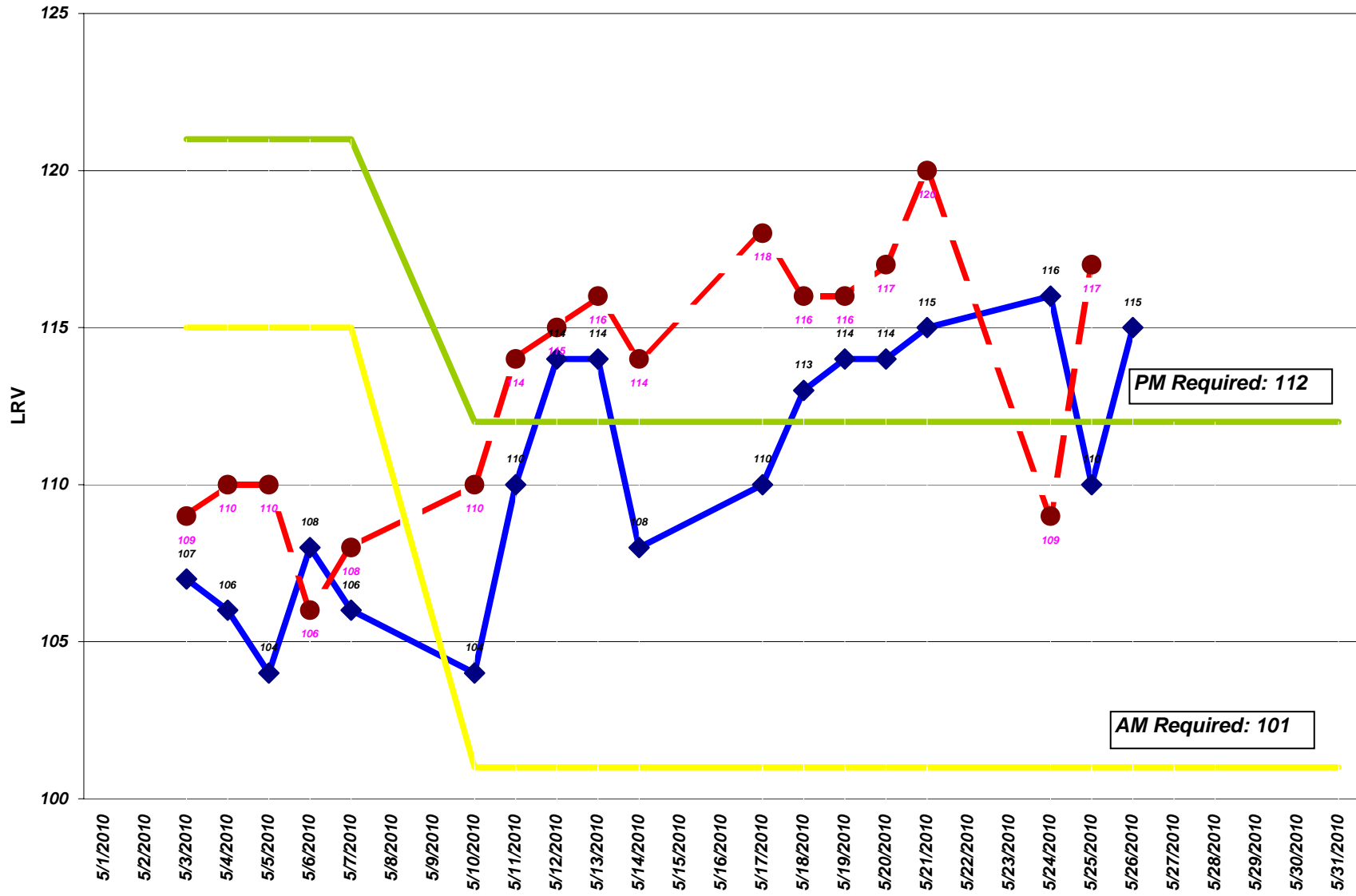
TIME DATE	CALL FROM DIVISION	TO CC	OP#	RUN	LINE	VEH	LOCATION	NATURE OF OCCURRENCE ACTION TAKEN	DELAY			
									DI	START	END	CC
15:37 05/25/10	R OPERATOR KI	11	3589	767	47	8336	VAN NESS AVE & CHESTNUT STREET (OB)	ACCIDENT, COACH AND TREE	OB	15:37	16:50	27
						1108856	INSP. V. HOLMES (1T66), VIDEO*, SYSTEM SAFETY*, 6A45*, SHOP TRUCK #855, FOLLOWED NEW OPERATOR TO DIVISION, OPERATOR 799, DAMAGE TO COACH: ARM AND MIRROR BROKEN OFF COACH. OPERATOR PLACED ON NON-DRIVING STATUS. RESCUE OPERATOR ID #3840. J. KELLY*, M. TRAVIS-ALLEN*, SI KIRKLAND VEH DELAY: 01:13					
18:10 05/25/10	R OPERATOR PO	18	3656	411	49	7102	VAN NESS AVE & SUTTER STREET (IB)	ACCIDENT, COACH AND AUTO	IB	18:10	18:57	27
						1108905	INSP. GEETER (1T62), VIDEO*, 6A45*, SYSTEM SAFETY*, NO INJURIES, NO 799. MAJOR DAMAGE TO AUTO, MINOR DAMAGE TO COACH (SCRAPE MARKS), COACH WAS REAR ENDED WHILE STANDING STATIONARY. VEH DELAY: 00:47					

### Line Delays $\geq$ 20 Minutes

TIME DATE	CALL FROM DIVISION	TO CC	OP#	RUN	LINE	VEH	LOCATION	NATURE OF OCCURRENCE ACTION TAKEN	DELAY			
									DI	START	END	CC

**There was no delay > 20 minutes.**

## LIGHT RAIL VEHICLES AM/PM Required & Availability



◆ AM Availability   
 ● PM Availability   
 — AM REQUIRED   
 — PM REQUIRED

Date	Day of week	A.M.		P.M.	
		SCHEDULED	ACTUAL	SCHEDULED	ACTUAL
<b>Light Rail Vehicles (LRVs) Availability - Peak</b>					
MAY 2010					
05/03/10	MONDAY	115	<b>107</b>	121	<b>109</b>
05/04/10	TUESDAY	115	<b>106</b>	121	<b>110</b>
05/05/10	WEDNESDAY	115	<b>104</b>	121	<b>110</b>
05/06/10	THURSDAY	115	<b>108</b>	121	<b>106</b>
05/07/10	FRIDAY	115	<b>106</b>	121	<b>108</b>
05/10/10	MONDAY (NEW SCHEDULE)	101	<b>104</b>	112	<b>110</b>
05/11/10	TUESDAY	101	<b>110</b>	112	<b>114</b>
05/12/10	WEDNESDAY	101	<b>114</b>	112	<b>115</b>
05/13/10	THURSDAY	101	<b>114</b>	112	<b>116</b>
05/14/10	FRIDAY	101	<b>108</b>	112	<b>114</b>
05/17/10	MONDAY	101	<b>110</b>	112	<b>118</b>
05/18/10	TUESDAY	101	<b>113</b>	112	<b>116</b>
05/19/10	WEDNESDAY	101	<b>114</b>	112	<b>116</b>
05/20/10	THURSDAY	101	<b>114</b>	112	<b>117</b>
05/21/10	FRIDAY	101	<b>115</b>	112	<b>120</b>
05/24/10	MONDAY	101	<b>116</b>	112	<b>109</b>
05/25/10	TUESDAY	101	<b>110</b>	112	<b>117</b>
05/26/10	WEDNESDAY	101	<b>115</b>	112	
05/27/10	THURSDAY	101		112	
05/28/10	FRIDAY	101		112	
05/31/10	MONDAY	101		112	

	<b>Maintenance Holds</b>
<b>Green Division</b>	
<b>Daily Maintenance Morning Status Report</b>	<b>May</b>
<b>26, 2010</b>	
Light Rail Vehicles (LRVs) on Hold Status @ 7:30 a.m.	

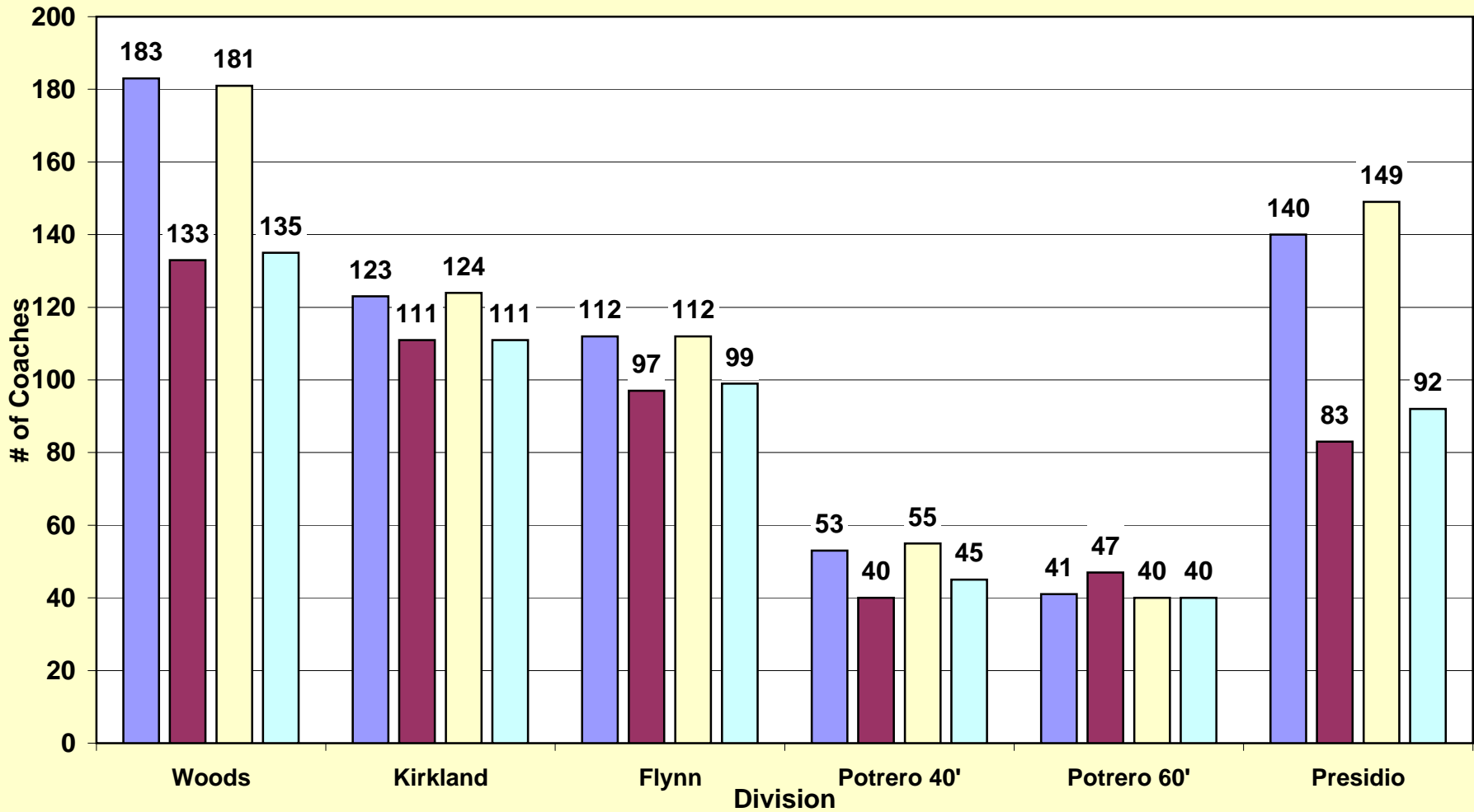
AIR SUPPLY SYSTEM	0
AUTOMATIC TRAIN CONTROL SYSTEM (ATCS)	2
BRAKE SYSTEM	1
COUPLER	0
DOORS / STEPS	0
HEATING/VENTILATION/AIR CONDITIONING (HVAC)	0
LIGHT/MIRROR/WIPER/ARTIC/UNDERCAR	0
DESTSIGN / ELECTRICAL/ELECTRONIC	0
PANTOGRAPHS	0
PROPULSION	0
TRUCK RELATED/ FLAT	2
SUPPORT SHOP	5
PREVENTIVE MAINTENANCE	4
BODY/PAINT/LEAKER	2
FLEET APPEARANCE/CLEANING	0
AWAITING PARTS	0
ACCIDENT/DERAIL/INVESTIGATION	0
BREDA / VENDOR	9
ENGR / PROJECT	1
LONG TERM HOLDS	10
QUALITY ASSURANCE	0

**TOTAL** **36**

	LRV2/3	PCC	Milan	Historic
<b>Green Division Daily Maintenance</b>				<b>May</b>
<b>26, 2010</b>				
Morning Status Report @ 7:30 a.m.				
<b>Fleet size</b>	151	21	10	8
<b>Present demand (AM)</b>	116	13	4	3
<b>Maintenance Holds</b>	<b>36</b>	<b>8</b>	<b>6</b>	<b>4</b>
<b>Equipment available for service @ 7:30 a.m.</b>	<b>115</b>	<b>13</b>	<b>4</b>	<b>4</b>

**Motor & Trolley Coaches Availability**  
**A.M. 5/26/10 & 5/25/10 P.M. Peak Time**

■ Equipment available for service @ 7:45 a.m.  
 ■ Final a.m. pull-out  
 ■ Equipment available for service @ 5:30 p.m.  
 ■ Final p.m. pull-out





	Schedul ed	Total Unavailable	Sick	Vacation	Unplanned Leave*	Other Reasons+	Total Unavailable	Sick	Vacation	Unplanned Leave*	Other Reasons+
<b>Full-Time Operators Absenteeism</b>											
<b>Day:TUESDAY, MAY 25, 2010</b>											
Green	250	59	13	8	21	17	23.6	5.2	3.2	8.4	6.8
Cable Car	138	20	5	1	8	6	14.5	3.6	0.7	5.8	4.3
Potrero	230	48	19	7	14	8	20.9	8.3	3.0	6.1	3.5
Presidio	203	38	8	8	11	11	18.7	3.9	3.9	5.4	5.4
Kirkland	232	42	6	10	12	14	18.1	2.6	4.3	5.2	6.0
Woods	344	46	12	3	21	10	13.4	3.5	0.9	6.1	2.9
Flynn	198	45	20	5	17	3	22.7	10.1	2.5	8.6	1.5
<b>Total</b>	<b>1,595</b>	<b>298</b>	<b>83</b>	<b>42</b>	<b>104</b>	<b>69</b>	<b>18.7%</b>	<b>5.2%</b>	<b>2.6%</b>	<b>6.5%</b>	<b>4.3%</b>
<i>TUESDAY 05 18 10</i>	1582	298	93	37	99	69	19%	6%	3%	6%	4%
<i>WEDNESDAY 05 19 10</i>	1569	305	81	38	102	84	19%	5%	2%	6%	5%
<i>THURSDAY 05 20 10</i>	1552	288	72	35	110	71	19%	5%	2%	7%	5%
<i>FRIDAY 05 21 10</i>	1580	333	100	40	107	86	21%	6%	2%	7%	5%
<i>SATURDAY 05 22 10</i>	1091	255	69	28	89	69	23%	6%	3%	8%	6%
<i>SUNDAY 05 23 10</i>	1065	235	62	20	88	65	22%	6%	2%	8%	6%
<i>MONDAY 05 24 10</i>	1599	331	95	46	108	82	21%	6%	3%	7%	5%

\* **Unplanned leave includes:** absent without leave (AWOL), claimed industrial injury, leaves, suspension, sick on run...

+ **Other reasons includes:** 1 Day vacation, banked holiday, floating holiday, jlmb, birthday, non-driving status, training.