



**Muni
Service Delivery
Daily Report**

Wednesday, May 26, 2010





Content

• Not outs for the a.m. rush hour	3
• Not outs for the p.m. rush hour	4
• Daily not outs & RDO report	5
• Accidents & line delays > 20 minutes	6
• Vehicles availability and maintenance reports	
Light Rail Vehicles Count (chart)	8
Light Rail Maintenance Hold	9
Light Rail Maintenance Available	10
Light Rail Maintenance Count	11
Motor & Trolley Buses Pull Outs (chart)	12
Motor & Trolley Buses Pull Outs (details)	13
• Operators absenteeism report	14

Not-Outs: No Operators	Not-Outs: No Equipment	Late Pull-outs: No Operators	Late Pull-outs: No Equipment	Lines affected
---------------------------------------	---------------------------------------	---	---	-----------------------

Runs Not Out and Late Out for Rush Hours

05 27 10 AM NOLO MORNING REPORT

Cable Car	0	0	0	0	
Flynn	1	0	1	0	38=1
Kirkland	0	0	0	0	
Woods	2	0	4	0	29=2
Potrero	0	0	0	1	
Presidio	0	0	0	0	
Green	0	0	0	0	
F line	0	0	0	0	
TOTAL	3	0	5	1	

Special Events

Emergency Equipment Demand - Reason

Division

Number of coaches

Report data compiled as of - (TIME)

Not-Outs: No Operators	Not-Outs: No Equipment	Late Pull-outs: No Operators	Late Pull-outs: No Equipment	Afected lines
-------------------------------	-------------------------------	-------------------------------------	-------------------------------------	----------------------

05 26 10 WEDNESDAY PM NOLO REPORT

Cable Car	0	0	0	0	
Flynn	3	0	0	0	8X=1 14L=1 38=1
Kirkland	3	0	0	0	10=1 28=1 47=1
Woods	7	0	0	0	9=2 29=2 44=1 48=1 90=1
Potrero	1	0	0	0	14=1
Presidio	0	0	0	0	
Metro	3	0	1	0	S=3
F line	0	0	0	0	
TOTAL	17	0	1	0	

Special Events

Emergency Equipment Demand - Reason

Division

Number of coaches

REPORT DATA COMPILED AS OF 1600 HRS

	Runs Missed	RDO	Missed Runs %	Daily Runs Scheduled	Daily Runs Missed	Daily RDO	Daily Pulled Out Runs %
Missed Service By Division Due To No Regular Day Off (RDO)							
WEDNESDAY, MAY 26, 2010							
SIGN UP MAY 2010							
Cable Car one-piece	0	0	0.0%	49	0	0	100.0%
Cable Car multi-piece	0		0.0%				
Flynn one-piece	2	7	5.3%	154	2	7	98.7%
Flynn multi-piece	0		0.0%				
Kirkland one-piece	2	4	3.5%	189	2	4	98.9%
Kirkland multi-piece	0		0.0%				
Woods one-piece	4	3	4.6%	262	7	3	97.3%
Woods multi-piece	6		6.0%				
Potrero one-piece	0	0	0.0%	181	0	0	100.0%
Potrero multi-piece	0		0.0%				
Presidio one-piece	3	0	5.8%	161	0	0	100.0%
Presidio multi-piece	2		2.4%				
Metro one-piece	3	3	4.5%	151	3	3	98.0%
Metro multi-piece	0		0.0%				
F Line one-piece	2	5	20.0%	32	2	5	93.8%
F Line multi-piece	0		0.0%				
System total				1179	16	22	98.6%

Accidents

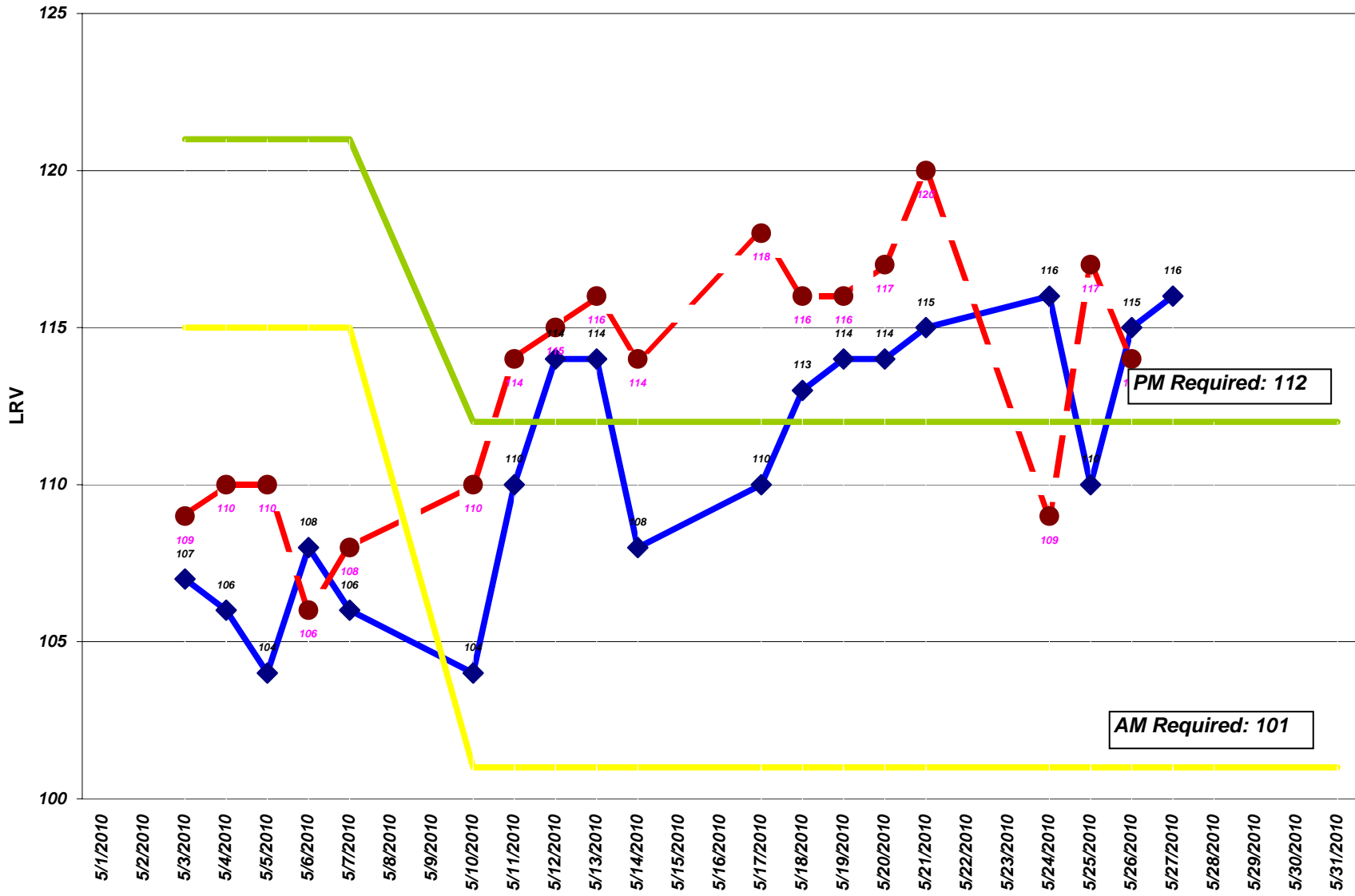
Wed May 26, 2010

TIME DATE	CALL FROM DIVISION	TO CC	OP#	RUN	LINE	VEH	LOCATION	NATURE OF OCCURRENCE ACTION TAKEN	DELAY			
									DI	START	END	CC
19:36 05/26/10	R INSP. HENDERS WO	27	1314	273	K/M	2838	GENEVA AVE & SAN JOSE AVE (IB)	ACCIDENT, COACH AND AUTO	IB	19:35	20:03	27
							1109081	INSP. HENDERSON (1T79B), 6A45*, VIDEO*, SYSTEM SAFETY MINOR DAMAGE TO COACH, MODERATE DAMAGE TO AUTO, AUTO OPENED DOOR INTO LEFT REAR OF COACH. J. KELLY*, M. TRAVIS-ALLEN*, NO 799, NO INJURIES. VEH DELAY: 00:28				

Line Delays \geq 20 Minutes

TIME DATE	CALL FROM DIVISION	TO CC	OP#	RUN	LINE	VEH	LOCATION	NATURE OF OCCURRENCE ACTION TAKEN	DELAY			
									DI	START	END	CC
07:59 05/26/10	R SFPD PO	39				33	18TH ST & ORD (IB,OB)	SUSPICIOUS PACKAGE	IB	07:59	09:08	35
							1108972	INSP K.JOMOC. MNGR J.STUART* 33 LINE REROUTED: IB: 18TH ST TO CASTRO, R-CASTRO, L- HAIGHT, R STANYAN TO REGULAR ROUTE. OB: MARKET / 18TH ST, EPU ON MARKET TO CASTRO, R-CASTRO, L 18TH ST TO REGULAR ROUTE. 2 SHUTTLES USED TO BRIDGE SERVICE VEH DELAY: 01:09 LINE DELAY: 01:26	LD	07:59	09:25	
16:50 05/26/10	R OPERATOR ME	29	1981	084	J	1535	DUBOCE PORTAL (D-4) (IB)	OVEHEAD (SUPPORT WIRE BROKEN)	IB	16:50	16:54	74
							1109035	SENIOR STAFF/SYSTEM SAFETY; LSGP; SUBWAY P/A; STATION HOLDS; PORTAL HOLDS; 311 CENTER* INSP F CADELINA, E WELLS & J CASTILLO* OVERHEAD LINE TRUCK 819 REPAIRED; INSP J CHAVEZ ASSISTED; ^N^ & ^J^ LINE WAS SWITCHED BACK IB TO OB @ CHURCH & DUBOCE. ^J^ & ^N^ LINE SUBWAY SERVICE SWITCHED BACK OB TO IB @ CASTRO. VEH DELAY: 00:04 LINE DELAY: 00:47	LD	16:50	17:37	

LIGHT RAIL VEHICLES AM/PM Required & Availability



◆ AM Availability
 ● - PM Availability
 — AM REQUIRED
 — PM REQUIRED

Date	Day of week	A.M.		P.M.	
		SCHEDULED	ACTUAL	SCHEDULED	ACTUAL
Light Rail Vehicles (LRVs) Availability - Peak					
MAY 2010					
05/03/10	MONDAY	115	107	121	109
05/04/10	TUESDAY	115	106	121	110
05/05/10	WEDNESDAY	115	104	121	110
05/06/10	THURSDAY	115	108	121	106
05/07/10	FRIDAY	115	106	121	108
05/10/10	MONDAY (NEW SCHEDULE)	101	104	112	110
05/11/10	TUESDAY	101	110	112	114
05/12/10	WEDNESDAY	101	114	112	115
05/13/10	THURSDAY	101	114	112	116
05/14/10	FRIDAY	101	108	112	114
05/17/10	MONDAY	101	110	112	118
05/18/10	TUESDAY	101	113	112	116
05/19/10	WEDNESDAY	101	114	112	116
05/20/10	THURSDAY	101	114	112	117
05/21/10	FRIDAY	101	115	112	120
05/24/10	MONDAY	101	116	112	109
05/25/10	TUESDAY	101	110	112	117
05/26/10	WEDNESDAY	101	115	112	114
05/27/10	THURSDAY	101	116	112	
05/28/10	FRIDAY	101		112	
05/31/10	MONDAY	101		112	

	Maintenance Holds
Green Division	
Daily Maintenance Morning Status Report	May
27, 2010	
Light Rail Vehicles (LRVs) on Hold Status @ 7:30 a.m.	

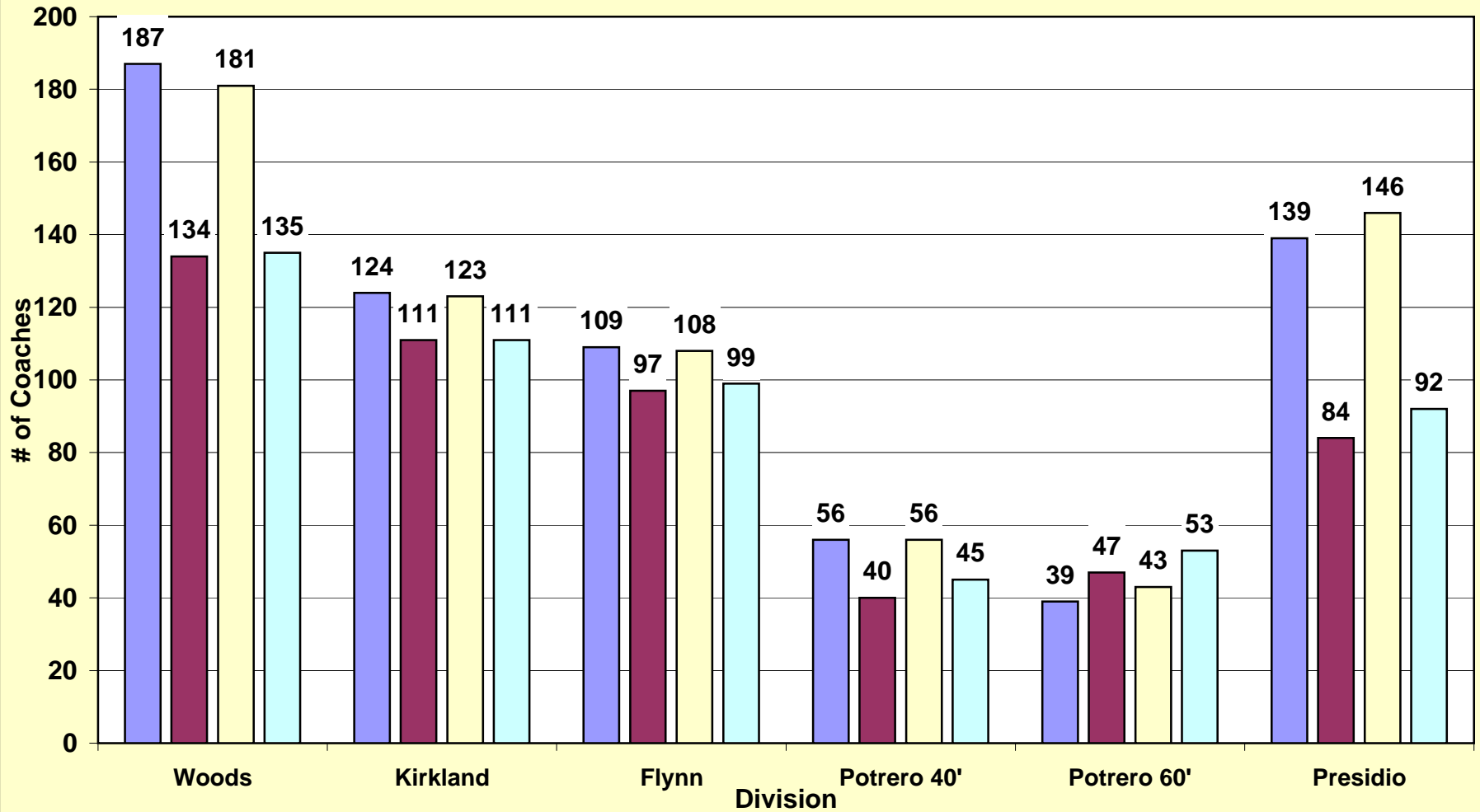
AIR SUPPLY SYSTEM	0
AUTOMATIC TRAIN CONTROL SYSTEM (ATCS)	1
BRAKE SYSTEM	0
COUPLER	1
DOORS / STEPS	0
HEATING/VENTILATION/AIR CONDITIONING (HVAC)	0
LIGHT/MIRROR/WIPER/ARTIC/UNDERCAR	0
DESTSIGN / ELECTRICAL/ELECTRONIC	0
PANTOGRAPHS	0
PROPULSION	0
TRUCK RELATED/ FLAT	3
HEAVY DUTY REPAIR	4
PREVENTIVE MAINTENANCE	4
BODY/PAINT/LEAKER	2
FLEET APPEARANCE/CLEANING	0
AWAITING PARTS	0
ACCIDENT/DERAIL/INVESTIGATION	0
BREDA / VENDOR	9
ENGR / PROJECT	1
LONG TERM HOLDS	10
QUALITY ASSURANCE	0

TOTAL **35**

	LRV2/3	PCC	Milan	Historic
Green Division Daily Maintenance				
				May
27, 2010				
Morning Status Report @ 7:30 a.m.				
Fleet size	151	21	10	8
Present demand (AM)	101	13	4	3
Maintenance Holds	35	8	6	4
Equipment available for service @ 7:30 a.m.	116	13	4	4

Motor & Trolley Coaches Availability
A.M. 5/27/10 & 5/26/10 P.M. Peak Time

■ Equipment available for service @ 7:45 a.m.
 ■ Final a.m. pull-out
 ■ Equipment available for service @ 5:30 p.m.
 ■ Final p.m. pull-out



	Schedul ed	Total Unavailable	Sick	Vacation	Unplanned Leave*	Other Reasons+	Total Unavailable	Sick	Vacation	Unplanned Leave*	Other Reasons+
Full-Time Operators Absenteeism											
Day: WEDNESDAY, MAY 26, 2010											
Green	251	60	11	8	23	18	23.9	4.4	3.2	9.2	7.2
Cable Car	134	16	3	1	7	5	11.9	2.2	0.7	5.2	3.7
Potrero	231	52	18	9	13	12	22.5	7.8	3.9	5.6	5.2
Presidio	205	31	8	7	8	8	15.1	3.9	3.4	3.9	3.9
Kirkland	233	47	7	10	13	17	20.2	3.0	4.3	5.6	7.3
Woods	343	47	8	3	24	12	13.7	2.3	0.9	7.0	3.5
Flynn	197	42	15	4	18	5	21.3	7.6	2.0	9.1	2.5
Total	1,594	295	70	42	106	77	18.5%	4.4%	2.6%	6.6%	4.8%
<i>WEDNESDAY 05 19 10</i>	1569	305	81	38	102	84	19%	5%	2%	6%	5%
<i>THURSDAY 05 20 10</i>	1552	288	72	35	110	71	19%	5%	2%	7%	5%
<i>FRIDAY 05 21 10</i>	1580	333	100	40	107	86	21%	6%	2%	7%	5%
<i>SATURDAY 05 22 10</i>	1091	255	69	28	89	69	23%	6%	3%	8%	6%
<i>SUNDAY 05 23 10</i>	1065	235	62	20	88	65	22%	6%	2%	8%	6%
<i>MONDAY 05 24 10</i>	1599	331	95	46	108	82	21%	6%	3%	7%	5%
<i>TUESDAY 05 25 10</i>	1595	298	83	42	104	69	19%	5%	3%	6%	4%

* **Unplanned leave includes:** absent without leave (AWOL), claimed industrial injury, leaves, suspension, sick on run...

+ **Other reasons includes:** 1 Day vacation, banked holiday, floating holiday, jlmb, birthday, non-driving status, training.

