



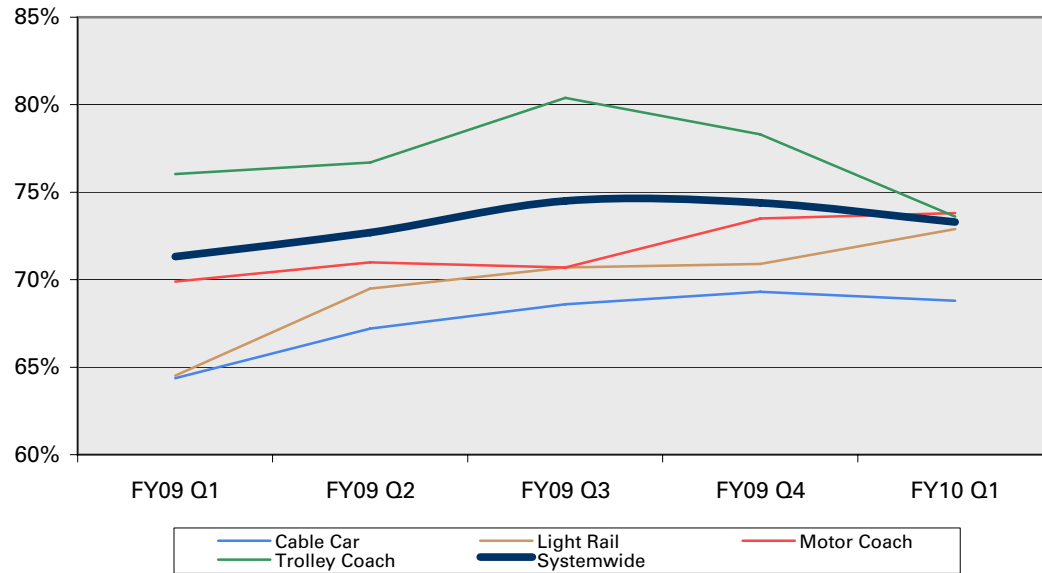
Service Standard	Page	Primary Strategic Goal Link	Goal FY10	Annual FY09	Quarter FY10 Q1
<b>SEE KEY ON PAGE 3</b>					
<b>A1 On-Time Performance</b> Customer Observed Schedule Adherence	4	2	>85%	73.3%	73.3%
<b>A1 On-Time Performance</b> Headway Adherence	5	2	>85%	60.2%	62.7%
<b>A2 Service Delivery</b> Scheduled Service Hours Delivered	6	2	>98.5%	97.0%	97.7%
<b>A2 Service Delivery</b> AM/PM Peak Vehicle Availability (Systemwide)	7	2	>99%	98.69% (AM) 98.90% (PM)	98.75% (AM) 98.65% (PM)
<b>A2 Service Delivery</b> Operator Availability	10	2	n/a	n/a	n/a
<b>A2 Service Delivery</b> Late Pull-Outs	11	2	<1.5%	0.5%	0.8%
<b>A3 Load Factors</b> % of Runs Exceeding Maximum Load During Peak Periods	12	1	<4.0%	3.9% (AM) 2.8% (PM)	4.4% (AM) 4.6% (PM)
<b>A4 Unscheduled Absences</b> Muni, Other SFMTA	13	2	varies	see body of report for details	
<b>A5 Mean Distance Between Failure</b> Bus, Rail	15	2	varies	see body of report for details	
<b>A6 Vacancy Rates for Service Critical Positions</b> Transit Operators, Crafts, Maintenance	17	5	<5%	5.0%	5.6%
<b>A7 Traffic and Parking Control Requests</b> % Addressed Within 90 Days	18	1	>82%	81%	77%
<b>A8 Color Curb Applications</b> % Addressed Within 30 Days	19	3	>90%	78%	89%
<b>A9 Parking Meter Malfunction Reports</b> % Addressed Within 48 Hours	20	4	>85%	85%	83%
<b>A10 Hazardous Traffic Sign Reports</b> % Addressed Within 24 Hours	21	1	>98%	100%	100%
<b>A11 Hazardous Traffic Signal Reports</b> % Addressed Within Two Hours	22	1	>92%	98%	96%
<b>A12 Traffic Lane Lines, Bus Zones and Crosswalks</b> % of Network Maintained Annually	23	1	>12%	12%	19%
<b>A13 Productivity</b> Average # of Boardings per Service Hour	24	4	n/a	75	n/a
<b>A14 Pedestrian Safety</b> # of Intersections Equipped with Countdown Signals	24	1	>776	824	n/a

Service Standard	Page	Primary Strategic Goal Link	Goal FY10	Annual FY09	Quarter FY10 Q1
<b>SEE KEY ON PAGE 3</b>					
<b>A15 Bicycle Network Usage</b> Counts at Key Locations	25	2	pending baseline	n/a	n/a
<b>A16 Congestion Management</b> Level of Service on Principal Arterials	25	2	n/a	see body of report for details	
<b>A17 Sustainability</b> % of Trips by More Sustainable Modes	26	1	pending baseline	see body of report for details	
<b>B1 Ridership</b> Customers Carried	27	2	>223,254,000	225,990,000	n/a
<b>B2 Revenue</b> Fare Revenue (in thousands of dollars)	28	4	>\$153,273	\$154,509	n/a
<b>B3 Farebox Performance</b> Average Fare (based on unlinked trips)	29	4	n/a	\$0.67	n/a
<b>B4 Cost Efficiency</b> Fully Allocated Service Cost by Mode	29	4	n/a	\$195.55	n/a
<b>B5 Cost Effectiveness</b> Operating Expense per Boarding	30	4	n/a	\$2.61	n/a
<b>C1 Customer Perceptions</b> Muni	31	3	>5%	see body of report for details	
<b>C1 Customer Perceptions</b> Other SFMTA Services	31	3	varies	see body of report for details	
<b>C2 Customer Feedback Received</b> Muni	32	3	n/a	see body of report for details	
<b>C2 Complaint Resolution Rate</b> % of Complaints Resolved Within 14 or 45 days	33	3	>85%	n/a	84.6%
<b>C3 Operator Training</b> # of Training Hours	34	5	>50,000 hours/year	79,900	17,289
<b>C3 Operator Training</b> % of Operators Receiving Revised Customer Service Training	35	5	>50%	n/a	n/a
<b>C4 Safety</b> Muni Collisions per 100,000 miles	36	1	<5.90	5.46	4.80
<b>C5 Safety</b> Collisions Involving Bicyclists and Pedestrians (Citywide)	38	1	n/a	n/a	n/a
<b>C6 Security Incidents</b> # of SFPD Reported Crimes and Other Incidents	39	1	<225 crimes per quarter	943	248
<b>C7 Proof-of-Payment Program</b> Fare Evasion, Inspection, Citation and Warning Rates	40	1	varies	n/a	n/a

Service Standard	Page	Primary Strategic Goal Link	Goal FY10	Annual FY09	Quarter FY10 Q1
<b>C8 Abandoned Automobile Reports</b> % Responded to Within 48 Hours	41	3	100%	99%	98%
<b>C9 Walk-in Citation and Residential Parking Permit Customers</b> % Served Within 15 Minutes	42	3	>82%	71%	54%
<b>C10 Administrative Citation Hearing Customers</b> % Served Within 10 Minutes	43	3	>82%	90%	87%
<b>C11 Mail-in Residential Parking Permit Renewals</b> % Processed Within 21 Days	44	3	>95%	90%	96%
<b>D1 Grievances</b> # of Transit Operator and Miscellaneous Employee Grievances	45	5	n/a	see body of report for details	
<b>D1 Grievances</b> # Grievances per 1,000 Employees	45	5	n/a	see body of report for details	
<b>D2 Grievance Resolution Rate</b> % of Operator Grievances Resolved Within 90 Days	46	5	>90%	83%	100%
<b>D3 EEO Cases</b> # Received	47	5	n/a	see body of report for details	
<b>D4 Employee Satisfaction</b> All SFMTA Employees	48	5	>5% year over year	see body of report for details	
<b>Line/Route Detail</b>	49	NA			
<b>Feedback Detail</b>	54	NA			
<b>Security Incident Detail</b>	55	NA			
<b>Service Standards Reference Sheet</b>	56	NA			

Key	
At or above goal	 Goal 1 Customer Focus
Below goal	 Goal 2 System Performance
	Goal 3 External Affairs - Community Relations
	Goal 4 Financial Capacity
	Goal 5 SFMTA Workforce
	Goal 6 Information Technology

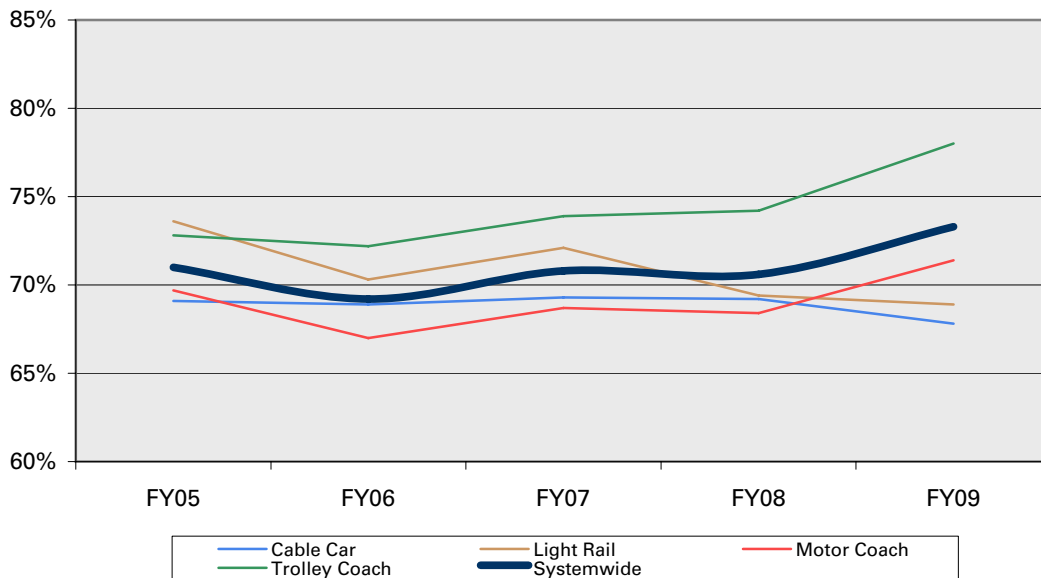
**Quarterly - FY10 Q1**      **Goal: >85%**    **Goal achieved?** ■    **Trend?** ■      Customer Observed Schedule Adherence



Reporting Period	Cable Car	Light Rail	Motor Coach	Trolley Coach	Systemwide
FY09 Q1	64.4%	64.5%	69.9%	76.0%	71.3%
FY09 Q2	67.2%	69.5%	71.0%	76.7%	72.7%
FY09 Q3	68.6%	70.7%	70.7%	80.4%	74.5%
FY09 Q4	69.3%	70.9%	73.5%	78.3%	74.4%
FY10 Q1	68.8%	72.9%	73.8%	73.6%	73.3%
<b>FY10 Goal</b>	<b>85.0%</b>	<b>85.0%</b>	<b>85.0%</b>	<b>85.0%</b>	<b>85.0%</b>

**Notes**  
 When weighted based on ridership, the customer observed schedule adherence for FY10 Q1 was 74.3%. Please see the appendix for detail by line/route.

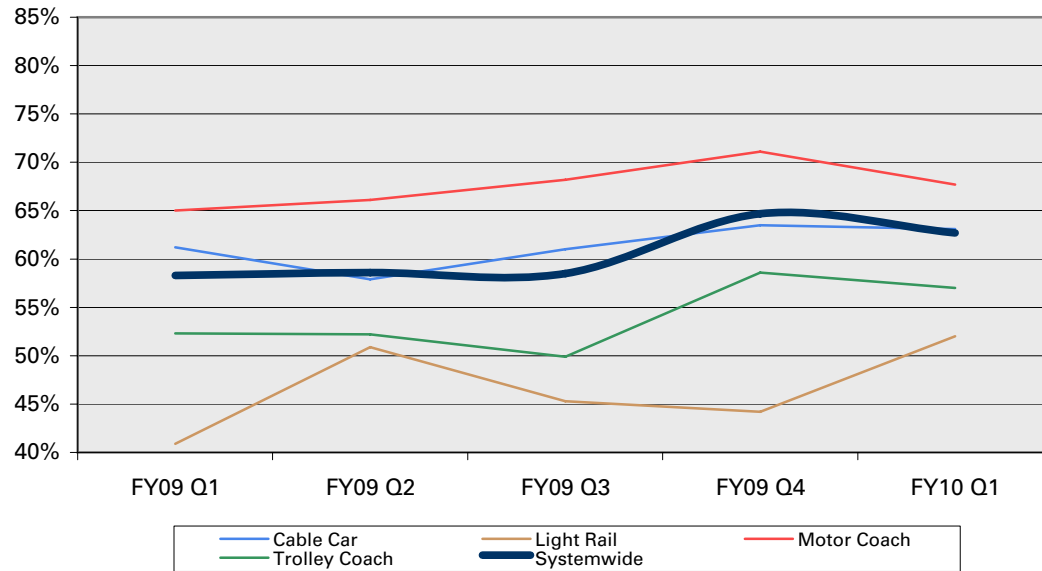
**Annual - FY09**      **Goal: >85%**    **Goal achieved?** ■    **Trend?** ■      Customer Observed Schedule Adherence



Reporting Period	Cable Car	Light Rail	Motor Coach	Trolley Coach	Systemwide
FY05	69.1%	73.6%	69.7%	72.8%	71.0%
FY06	68.9%	70.3%	67.0%	72.2%	69.2%
FY07	69.3%	72.1%	68.7%	73.9%	70.8%
FY08	69.2%	69.4%	68.4%	74.2%	70.6%
FY09	67.8%	68.9%	71.4%	78.0%	73.3%
<b>FY09 Goal</b>	<b>85.0%</b>	<b>85.0%</b>	<b>85.0%</b>	<b>85.0%</b>	<b>85.0%</b>

**Notes**  
 Please see the appendix for detail by line/route.

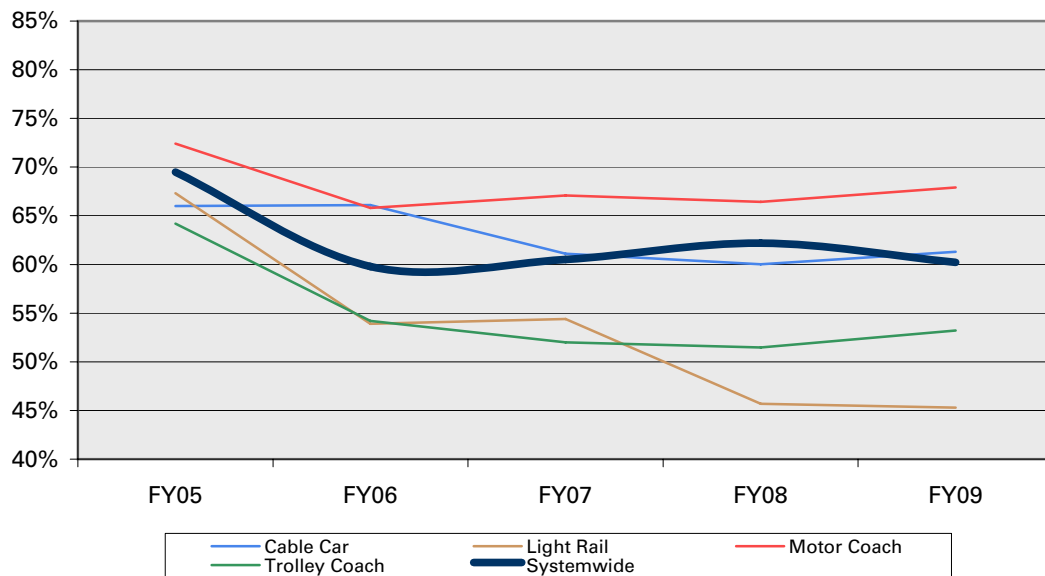
**Quarterly - FY10 Q1**      **Goal: >85%**    **Goal achieved?** ■    **Trend?** ■      Headway Adherence



Reporting Period	Cable Car	Light Rail	Motor Coach	Trolley Coach	Systemwide
FY09 Q1	61.2%	40.9%	65.0%	52.3%	58.3%
FY09 Q2	57.9%	50.9%	66.1%	52.2%	58.6%
FY09 Q3	61.0%	45.3%	68.2%	49.9%	58.5%
FY09 Q4	63.5%	44.2%	71.1%	58.6%	64.7%
FY10 Q1	63.1%	52.0%	67.7%	57.0%	62.7%
<b>FY10 Goal</b>	<b>85.0%</b>	<b>85.0%</b>	<b>85.0%</b>	<b>85.0%</b>	<b>85.0%</b>

Notes  
 Please see the appendix for detail by line/route.

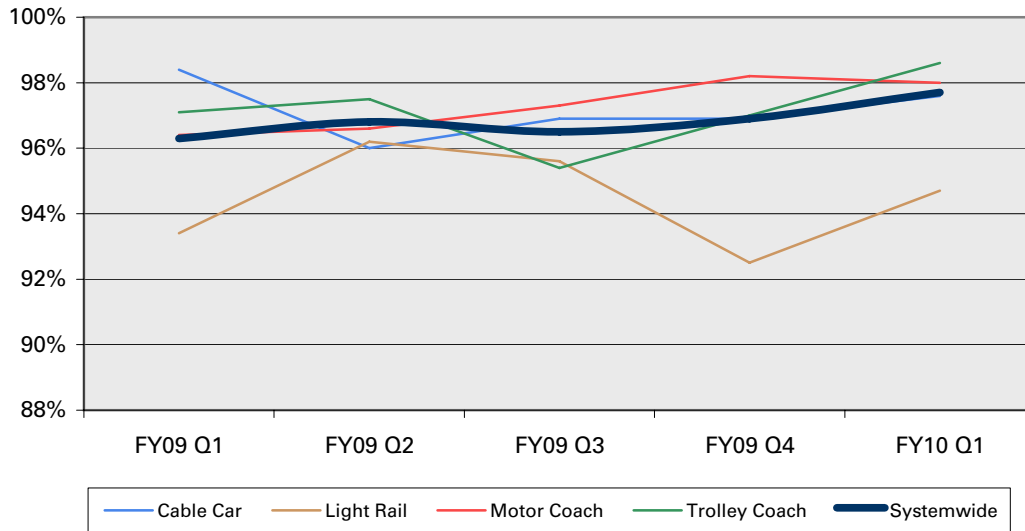
**Annual - FY09**      **Goal: >85%**    **Goal achieved?** ■    **Trend?** ■      Headway Adherence



Reporting Period	Cable Car	Light Rail	Motor Coach	Trolley Coach	Systemwide
FY05	66.0%	67.3%	72.4%	64.2%	69.5%
FY06	66.1%	53.9%	65.8%	54.2%	59.8%
FY07	61.1%	54.4%	67.1%	52.0%	60.5%
FY08	60.0%	45.7%	66.4%	51.5%	62.2%
FY09	61.3%	45.3%	67.9%	53.2%	60.2%
<b>FY09 Goal</b>	<b>85.0%</b>	<b>85.0%</b>	<b>85.0%</b>	<b>85.0%</b>	<b>85.0%</b>

Notes  
 Please see the appendix for detail by line/route.

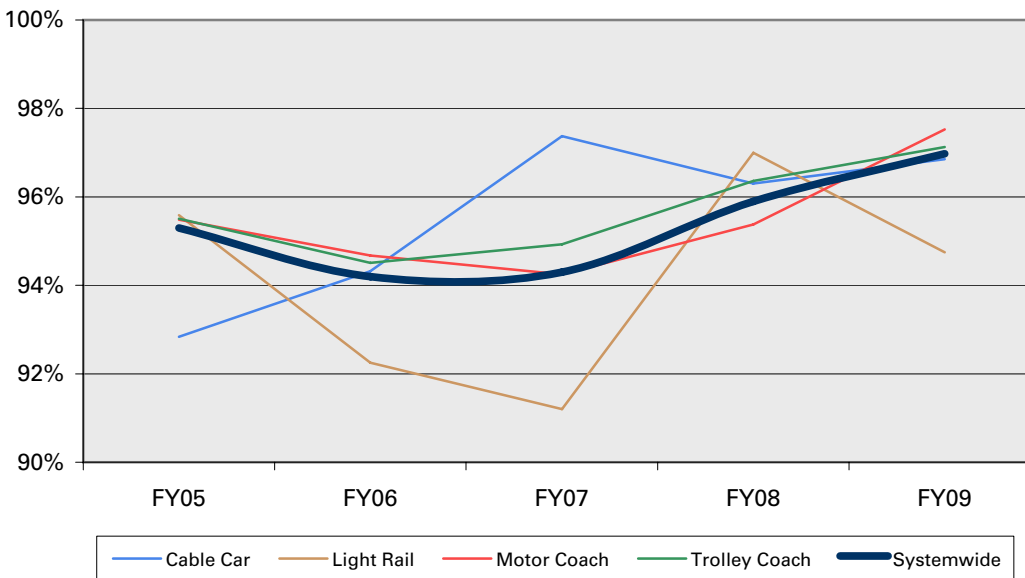
**Quarterly - FY10 Q1**      **Goal: >98.5%**   **Goal achieved?** ■   **Trend?** ■      Scheduled Service Hours Delivered



Reporting Period	Cable Car	Light Rail	Motor Coach	Trolley Coach	Systemwide
FY09 Q1	98.4%	93.4%	96.4%	97.1%	96.3%
FY09 Q2	96.0%	96.2%	96.6%	97.5%	96.8%
FY09 Q3	96.9%	95.6%	97.3%	95.4%	96.5%
FY09 Q4	96.9%	92.5%	98.2%	97.0%	96.9%
FY10 Q1	97.6%	94.7%	98.0%	98.6%	97.7%
<i>FY09 Goal</i>	<i>98.5%</i>	<i>98.5%</i>	<i>98.5%</i>	<i>98.5%</i>	<i>98.5%</i>

**Notes**  
*Divisional Performance: Cable Car 97.6%, Green 92.5%, Flynn 97.6%, Kirkland 98.3%, Woods 98.1%, Potrero 97.9%, Presidio 99.4%*

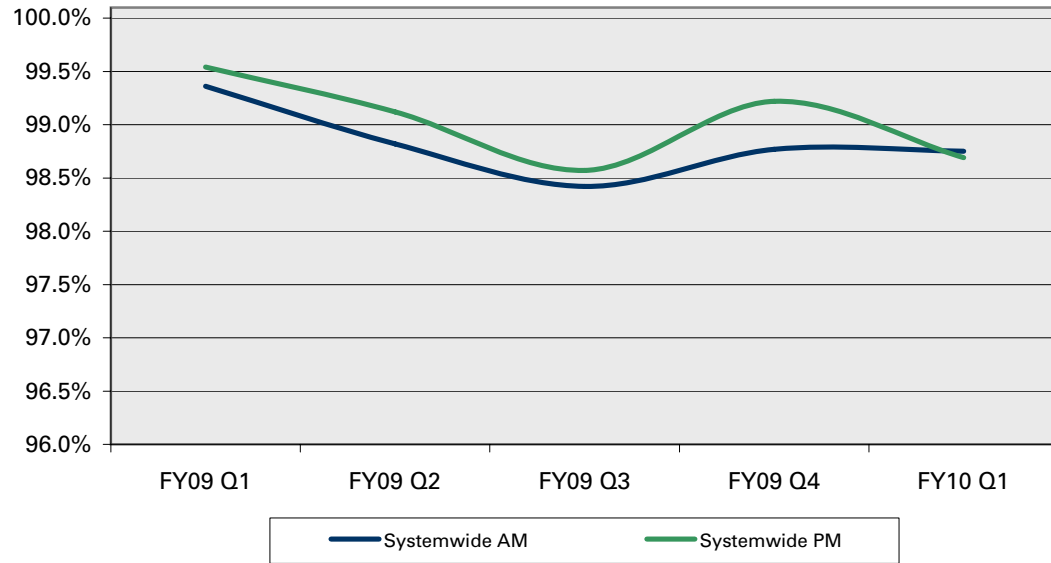
**Annual - FY09**      **Goal: >98.5%**   **Goal achieved?** ■   **Trend?** ■      Scheduled Service Hours Delivered



Reporting Period	Cable Car	Light Rail	Motor Coach	Trolley Coach	Systemwide
FY05	92.8%	95.6%	95.5%	95.5%	95.3%
FY06	94.3%	92.3%	94.7%	94.5%	94.2%
FY07	97.4%	91.2%	94.3%	94.9%	94.3%
FY08	96.3%	97.0%	95.4%	96.4%	95.9%
FY09	96.9%	94.8%	97.5%	97.1%	97.0%
<i>FY09 Goal</i>	<i>98.5%</i>	<i>98.5%</i>	<i>98.5%</i>	<i>98.5%</i>	<i>98.5%</i>

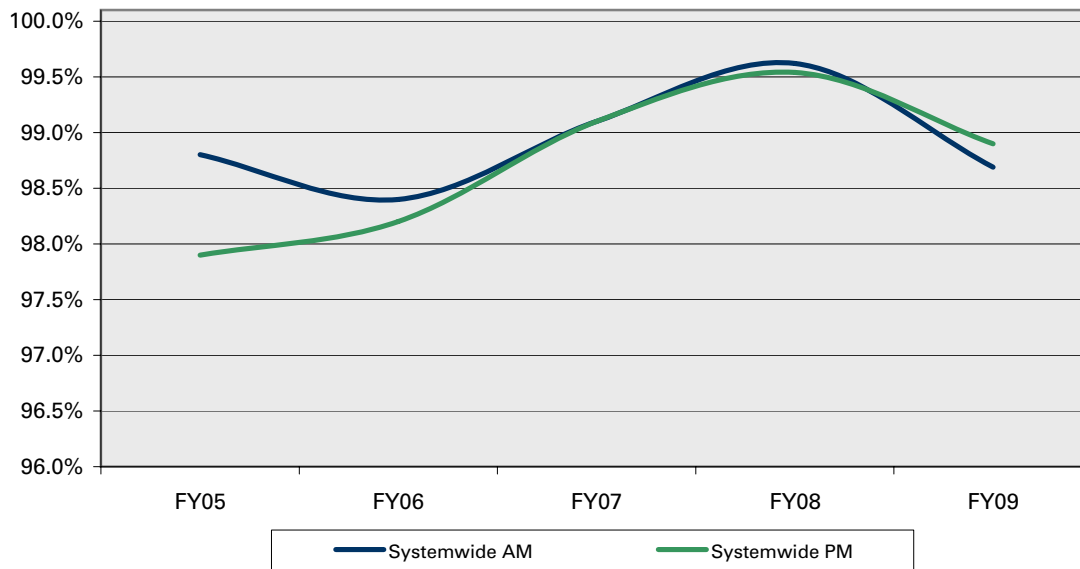
**Notes**

**Quarterly - FY10 Q1**      **Goal: >99%**    **Goal achieved?** ■    **Trend?** ■      AM/PM Vehicle Availability



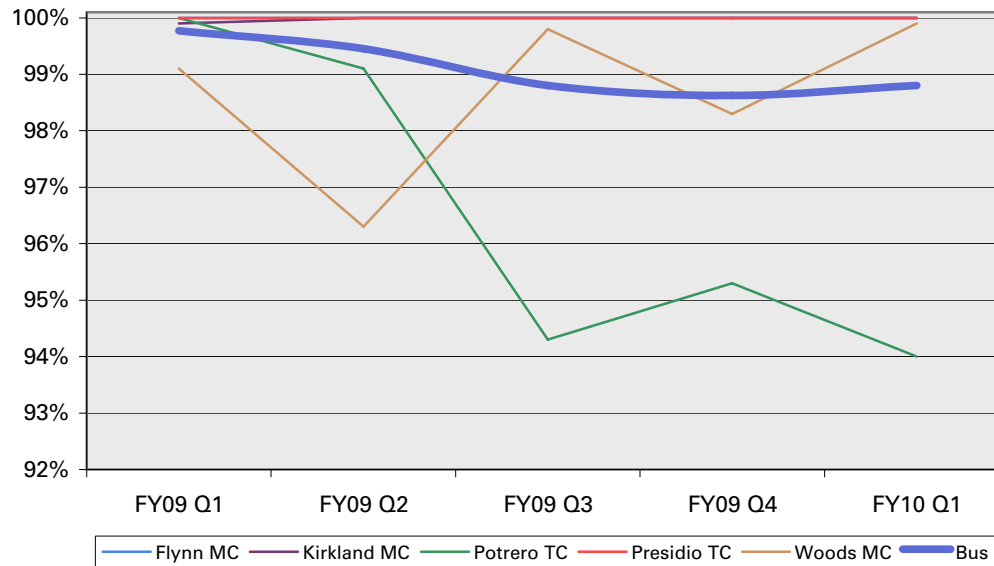
Reporting Period	Systemwide AM	Systemwide PM
FY09 Q1	99.36%	99.54%
FY09 Q2	98.82%	99.12%
FY09 Q3	98.42%	98.57%
FY09 Q4	98.77%	99.22%
FY10 Q1	98.75%	98.69%
<i>FY10 Goal</i>	<i>99.00%</i>	<i>99.00%</i>
<b>Notes</b>		

**Annual - FY09**      **Goal: >99%**    **Goal achieved?** ■    **Trend?** ■      AM/PM Vehicle Availability



Reporting Period	Systemwide AM	Systemwide PM
FY05	98.80%	97.90%
FY06	98.40%	98.20%
FY07	99.10%	99.10%
FY08	99.62%	99.54%
FY09	98.69%	98.90%
<i>FY09 Goal</i>	<i>99.00%</i>	<i>99.00%</i>
<b>Notes</b>		
A5 in FY08.		

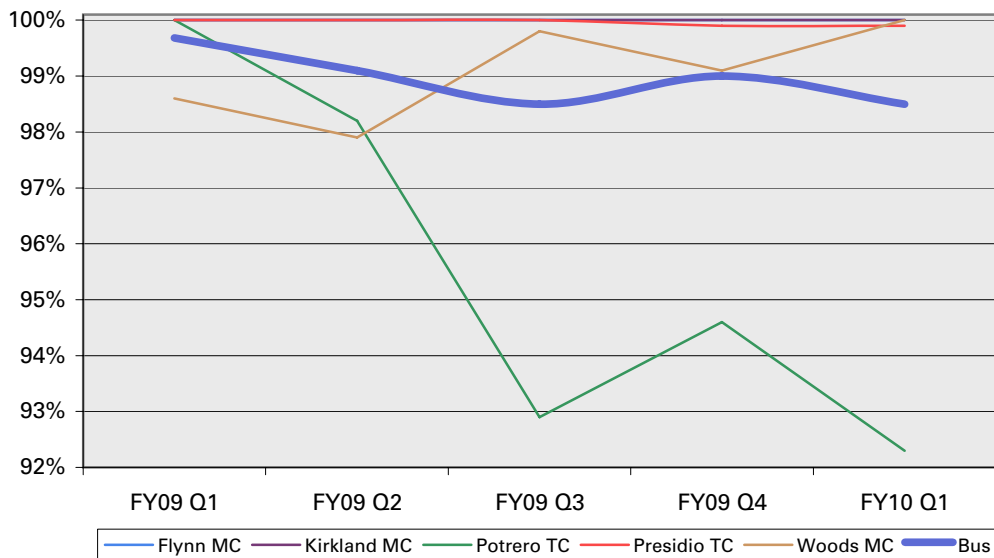
**Quarterly - FY10 Q1**      **Goal: >99%**      **Goal achieved?** ■      **Trend?** ■      AM Vehicle Availability



Reporting Period	Flynn MC	Kirkland MC	Potrero TC	Presidio TC	Woods MC	Bus
FY09 Q1	100.0%	99.9%	100.0%	100.0%	99.1%	99.8%
FY09 Q2	100.0%	100.0%	99.1%	100.0%	96.3%	99.5%
FY09 Q3	100.0%	100.0%	94.3%	100.0%	99.8%	98.8%
FY09 Q4	100.0%	100.0%	95.3%	100.0%	98.3%	98.6%
FY10 Q1	100.0%	100.0%	94.0%	100.0%	99.9%	98.8%
<i>FY10 Goal</i>	<i>99.0%</i>	<i>99.0%</i>	<i>99.0%</i>	<i>99.0%</i>	<i>99.0%</i>	<i>99.0%</i>

Notes  
 MC: Motor Coach, TC: Trolley Coach

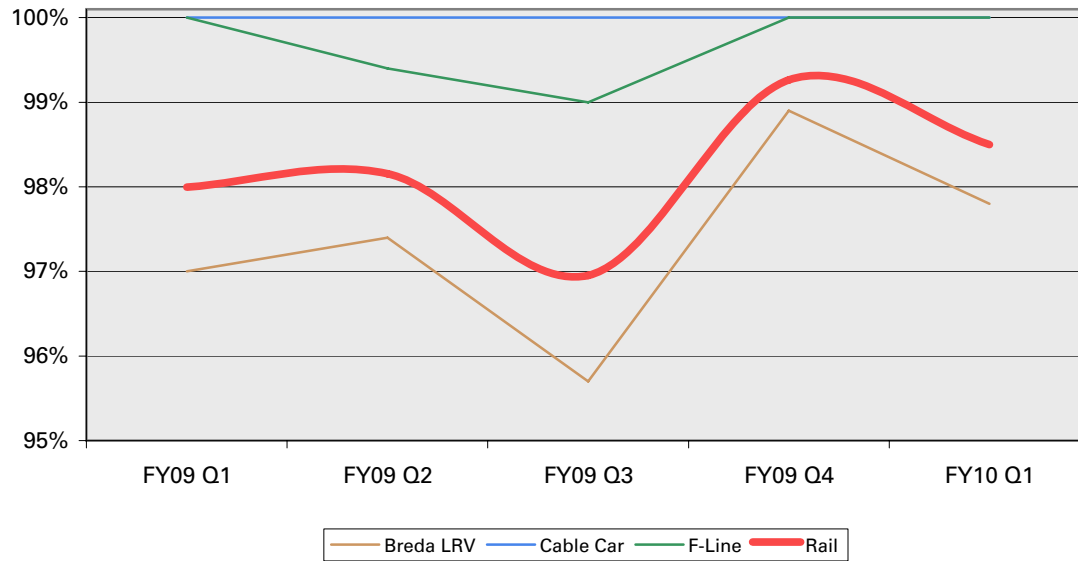
**Quarterly - FY10 Q1**      **Goal: >99%**      **Goal achieved?** ■      **Trend?** ■      PM Vehicle Availability



Reporting Period	Flynn MC	Kirkland MC	Potrero TC	Presidio TC	Woods MC	Bus
FY09 Q1	100.0%	100.0%	100.0%	100.0%	98.6%	99.7%
FY09 Q2	100.0%	100.0%	98.2%	100.0%	97.9%	99.1%
FY09 Q3	100.0%	100.0%	92.9%	100.0%	99.8%	98.5%
FY09 Q4	100.0%	100.0%	94.6%	99.9%	99.1%	99.0%
FY10 Q1	100.0%	100.0%	92.3%	99.9%	100.0%	98.5%
<i>FY09 Goal</i>	<i>99.0%</i>	<i>99.0%</i>	<i>99.0%</i>	<i>99.0%</i>	<i>99.0%</i>	<i>99.0%</i>

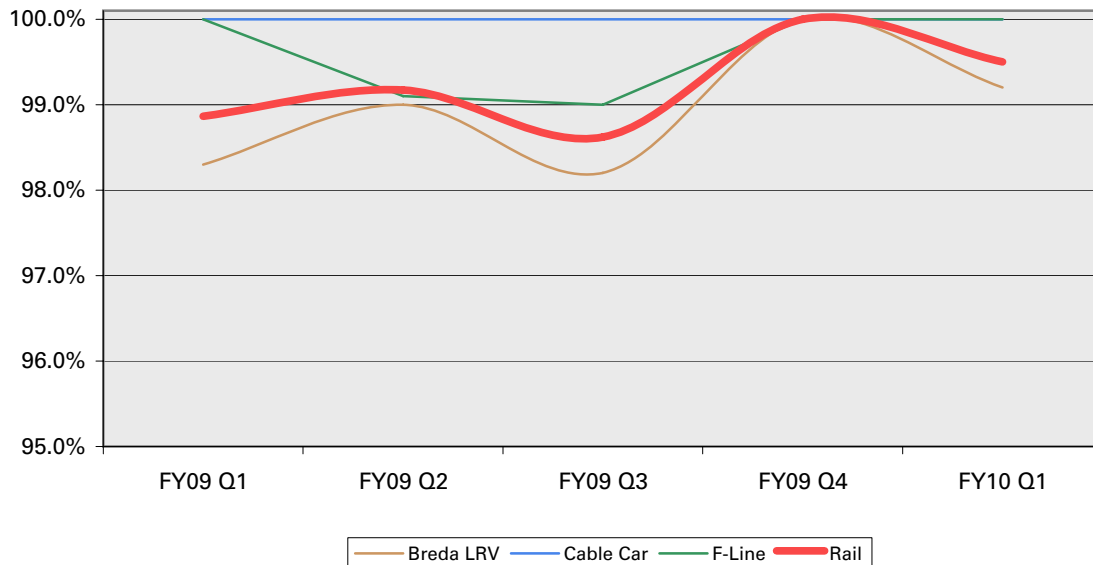
Notes  
 MC: Motor Coach, TC: Trolley Coach  
 A5 in FY08.

**Quarterly - FY10 Q1**      **Goal: >99%**    **Goal achieved?** ■    **Trend?** ■      **AM Vehicle Availability**



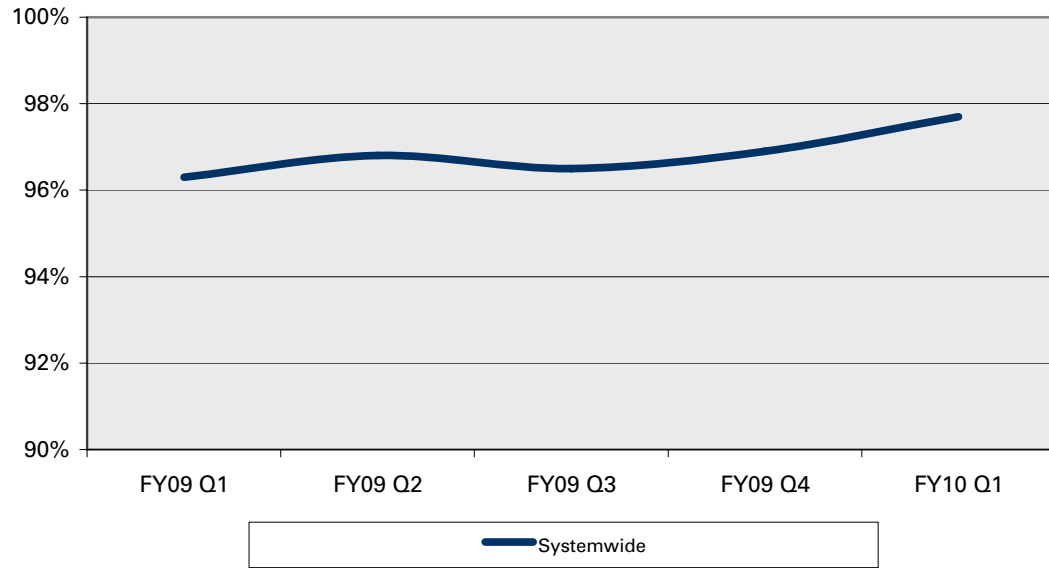
Reporting Period	Breda LRV	Cable Car	F-Line	Rail
FY09 Q1	97.0%	100.0%	100.0%	98.0%
FY09 Q2	97.4%	100.0%	99.4%	98.2%
FY09 Q3	95.7%	100.0%	99.0%	97.0%
FY09 Q4	98.9%	100.0%	100.0%	99.3%
FY10 Q1	97.8%	100.0%	100.0%	98.5%
<b>FY10 Goal</b>	<b>99.0%</b>	<b>99.0%</b>	<b>99.0%</b>	<b>99.0%</b>
<b>Notes</b>				

**Quarterly - FY10 Q1**      **Goal: >99%**    **Goal achieved?** ■    **Trend?** ■      **PM Vehicle Availability**



Reporting Period	Breda LRV	Cable Car	F-Line	Rail
FY09 Q1	98.3%	100.0%	100.0%	98.9%
FY09 Q2	99.0%	100.0%	99.1%	99.2%
FY09 Q3	98.2%	100.0%	99.0%	98.6%
FY09 Q4	100.0%	100.0%	100.0%	100.0%
FY10 Q1	99.2%	100.0%	100.0%	99.5%
<b>FY10 Goal</b>	<b>99.0%</b>	<b>99.0%</b>	<b>99.0%</b>	<b>99.0%</b>
<b>Notes</b>				
A5 in FY08.				

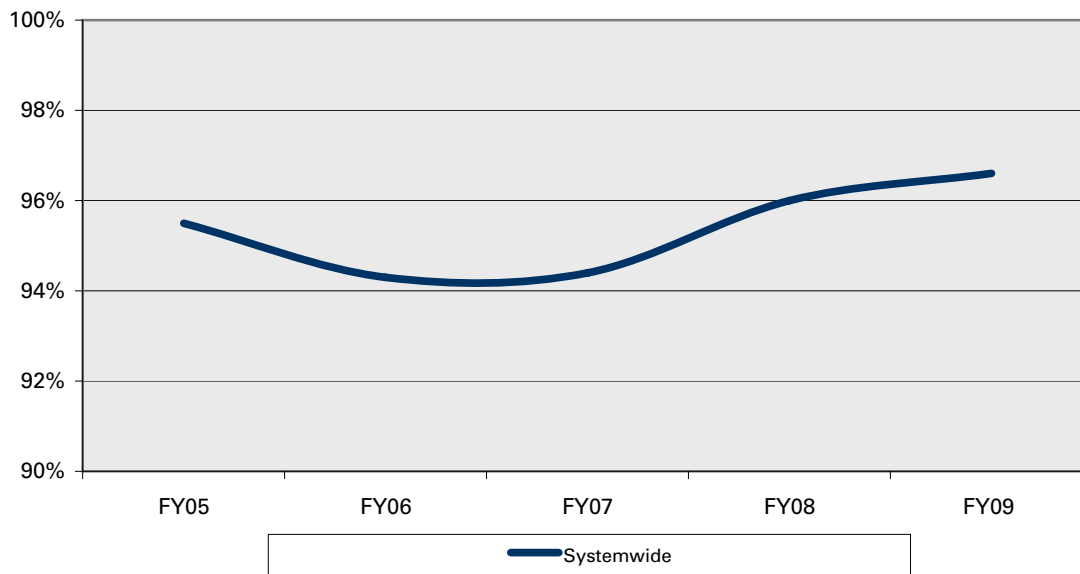
**Quarterly - FY10 Q1** Trend? ■ Operator Availability



Reporting Period	Systemwide
FY09 Q1	96.3%
FY09 Q2	96.8%
FY09 Q3	96.5%
FY09 Q4	96.9%
FY10 Q1	97.7%

**Notes**

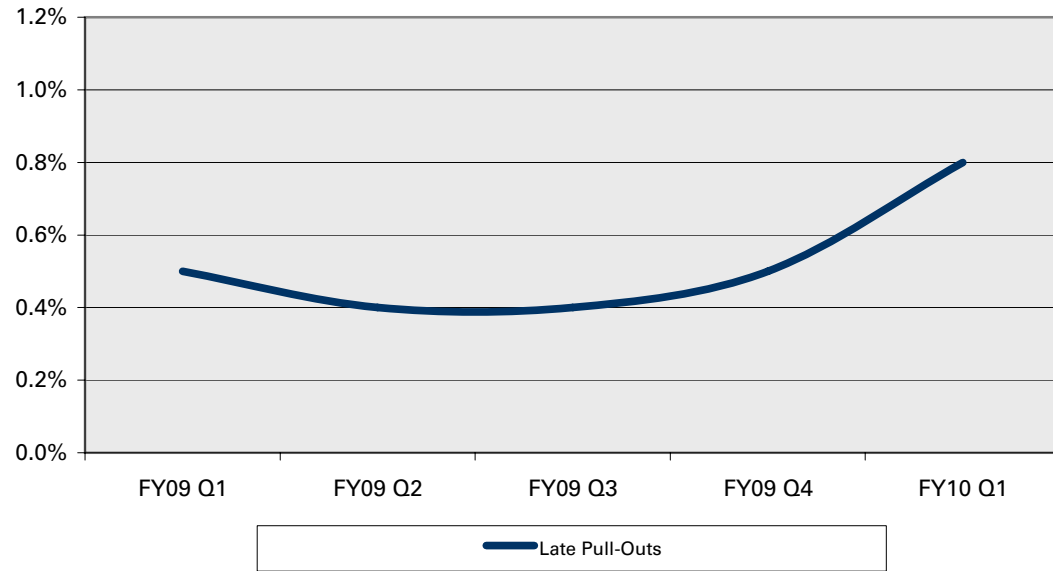
**Annual - FY09** Trend? ■ Operator Availability



Reporting Period	Systemwide
FY05	95.5%
FY06	94.3%
FY07	94.4%
FY08	96.0%
FY09	96.6%

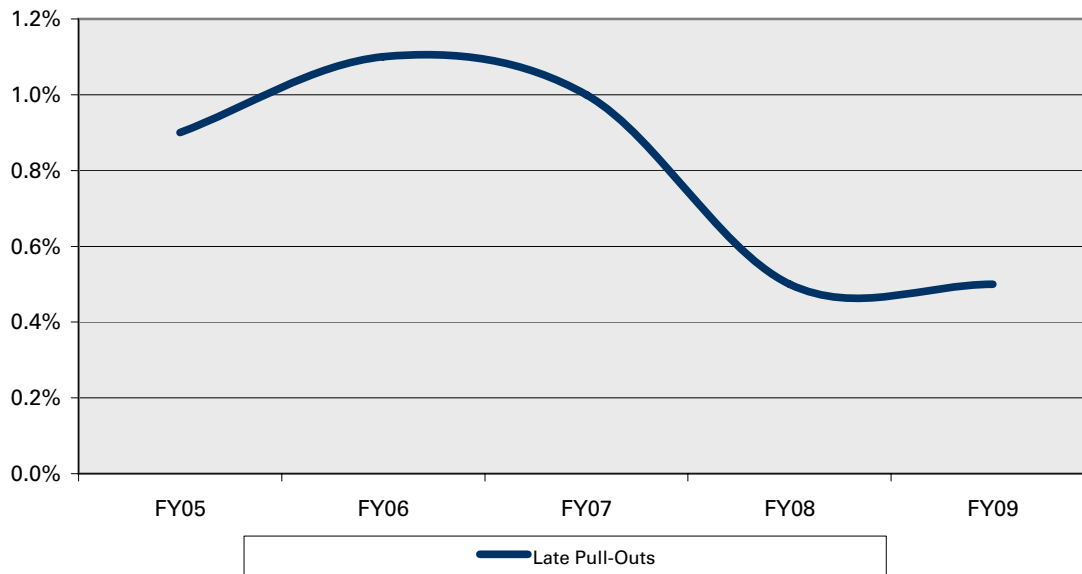
**Notes**

**Quarterly - FY10 Q1**      **Goal: <1.5%**    **Goal achieved?** ■    **Trend?** ■      Late Pull-Outs



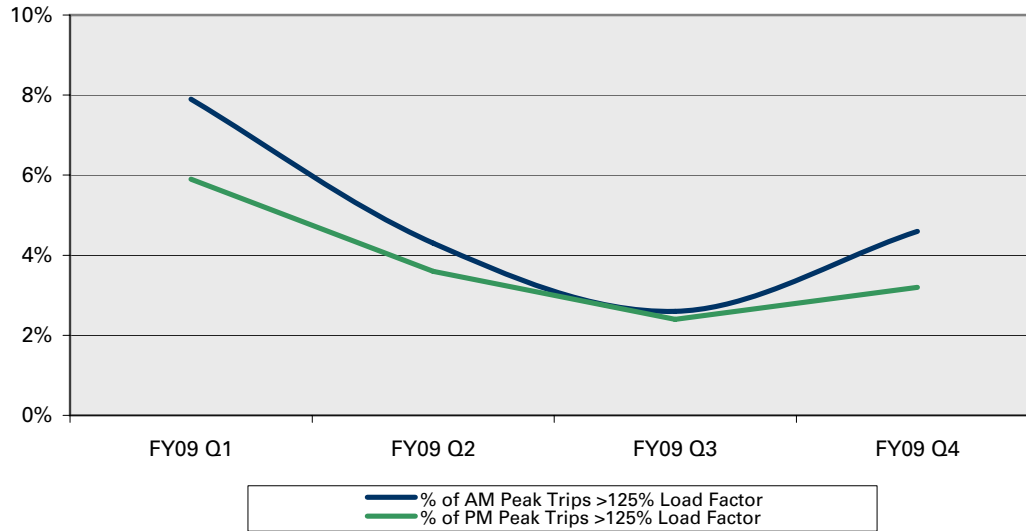
Reporting Period	Late Pull-Outs
FY09 Q1	0.5%
FY09 Q2	0.4%
FY09 Q3	0.4%
FY09 Q4	0.5%
FY10 Q1	0.8%
<i>FY10 Goal</i>	1.5%
Notes	

**Annual - FY09**      **Goal: <1.5%**    **Goal achieved?** ■    **Trend?** ■      Late Pull-Outs



Reporting Period	Late Pull-Outs
FY05	0.9%
FY06	1.1%
FY07	1.0%
FY08	0.5%
FY09	0.5%
<i>FY09 Goal</i>	1.5%
Notes	

**Quarterly - FY10 Q1**      **Goal: <4.0%**    **Goal achieved?** ■    **Trend?** ■      Load Factors



Reporting Period	% of AM Peak Trips >125% Load Factor	% of PM Peak Trips >125% Load Factor
FY09 Q1	7.9%	5.9%
FY09 Q2	4.3%	3.6%
FY09 Q3	2.6%	2.4%
FY09 Q4	4.6%	3.2%
FY10 Q1	4.4%	4.6%
FY10 Goal	4.0%	4.0%

**Notes**  
*Lines/Routes with over 25% of peak trips over 125% of comfortable sitting/standing capacity:*  
AM: KT  
PM: None

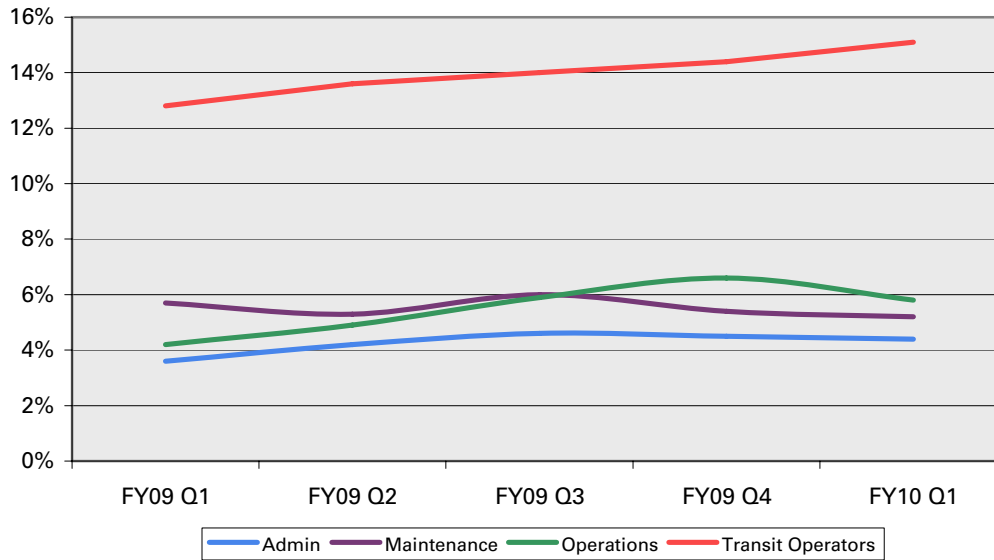
**Annual - FY09**      Load Factors

Reporting Period	% of AM Peak Trips >125% Load Factor	% of PM Peak Trips >125% Load Factor
FY09	3.9%	2.8%
FY10 Goal	4.0%	4.0%

**Notes**  
*Capacities per Short Range Transit Plan: 30' Bus: 45, 40' Bus: 63, 60' Articulated Bus: 94, LRV: 119, Historic Streetcar: 60, Cable Car: 63*  
  
*A4 in FY08.*

Service Standard modified for FY09.  
 Annual charts to be introduced in FY10.  
 Goal to be introduced in FY10 after baseline has been established.

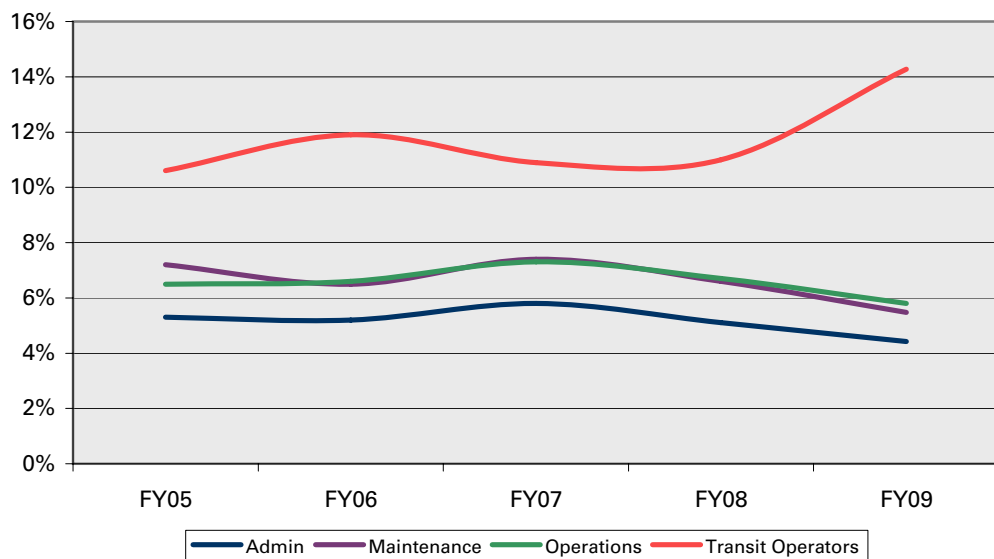
**Quarterly - FY10 Q1** | **Goals: Vary by unit; see FY10 goals below** | **Unscheduled Absences**



Reporting Period	Admin	Maintenance	Operations	Transit Operators
FY09 Q1	3.6%	5.7%	4.2%	12.8%
FY09 Q2	4.2%	5.3%	4.9%	13.6%
FY09 Q3	4.6%	6.0%	5.9%	14.0%
FY09 Q4	4.5%	5.4%	6.6%	14.4%
FY10 Q1	4.4%	5.2%	5.8%	15.1%
<b>FY10 Goal</b>	<b>5.2%</b>	<b>6.7%</b>	<b>6.9%</b>	<b>10.2%</b>

**Notes**  
*Elements included in transit operator unscheduled absence rate include sick leave, sick on run, industrial claims, other leaves, suspensions, AWOL, working miss outs (lateness), jury duty, and unpaid loans to union.*

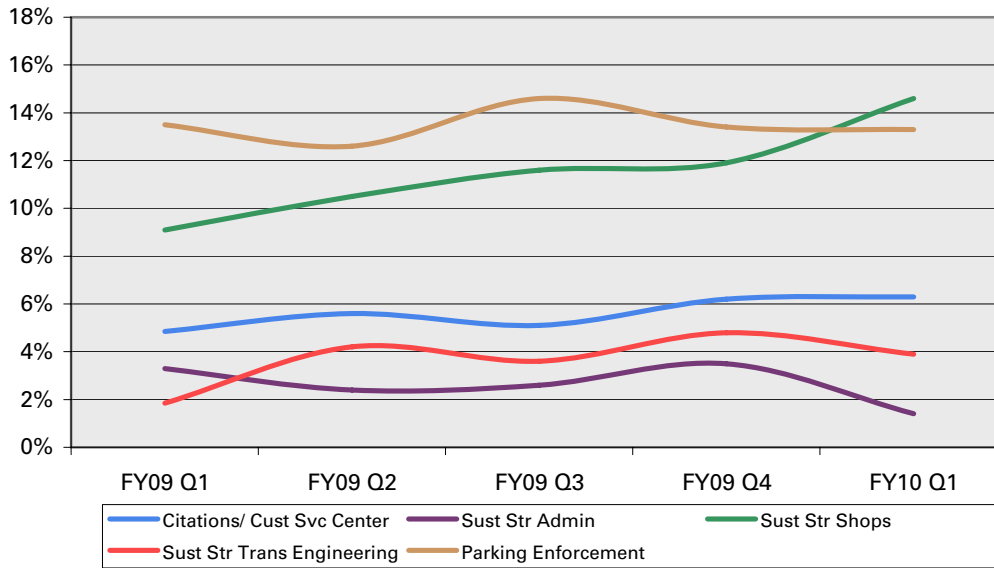
**Annual - FY09** | **Goals: Vary by unit; see FY09 goals below** | **Unscheduled Absences**



Reporting Period	Admin	Maintenance	Operations	Transit Operators
FY05	5.3%	7.2%	6.5%	10.6%
FY06	5.2%	6.5%	6.6%	11.9%
FY07	5.8%	7.4%	7.3%	10.9%
FY08	5.1%	6.6%	6.7%	11.0%
FY09	4.4%	5.5%	5.8%	14.3%
<b>FY09 Goal</b>	<b>5.2%</b>	<b>6.7%</b>	<b>6.9%</b>	<b>10.2%</b>

**Notes**  
*A6 in FY08.*

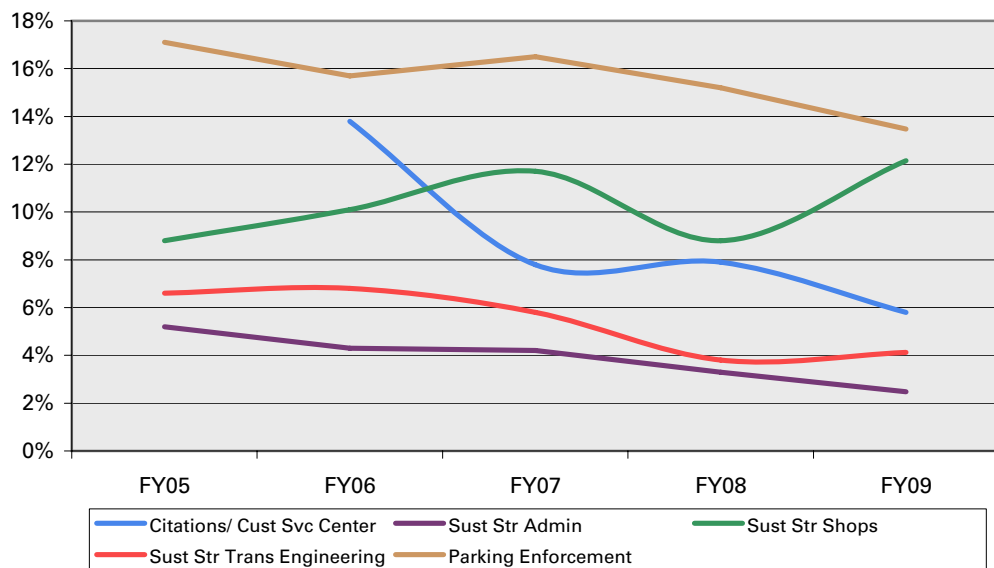
**Quarterly - FY10 Q1** | **Goals: Vary by unit; see FY10 goals below** | **Unscheduled Absences**



Reporting Period	Citations/ Cust Svc Center	Sust Str Admin	Sust Str Shops	Sust Str Trans Engineering	Parking Enforcement
FY09 Q1	4.9%	3.3%	9.1%	1.9%	13.5%
FY09 Q2	5.6%	2.4%	10.5%	4.2%	12.6%
FY09 Q3	5.1%	2.6%	11.6%	3.6%	14.6%
FY09 Q4	6.2%	3.5%	11.9%	4.8%	13.4%
FY10 Q1	6.3%	1.4%	14.6%	3.9%	13.3%
FY10 Goal	7.4%	4.0%	10.5%	5.2%	14.9%

**Notes**  
*Sust Str: Sustainable Streets - Transportation Engineering*  
 The increase in the unscheduled absence rate for the shops can be attributed to an above average number of employees on disability and workers compensation, particularly in the meter and sign shops.

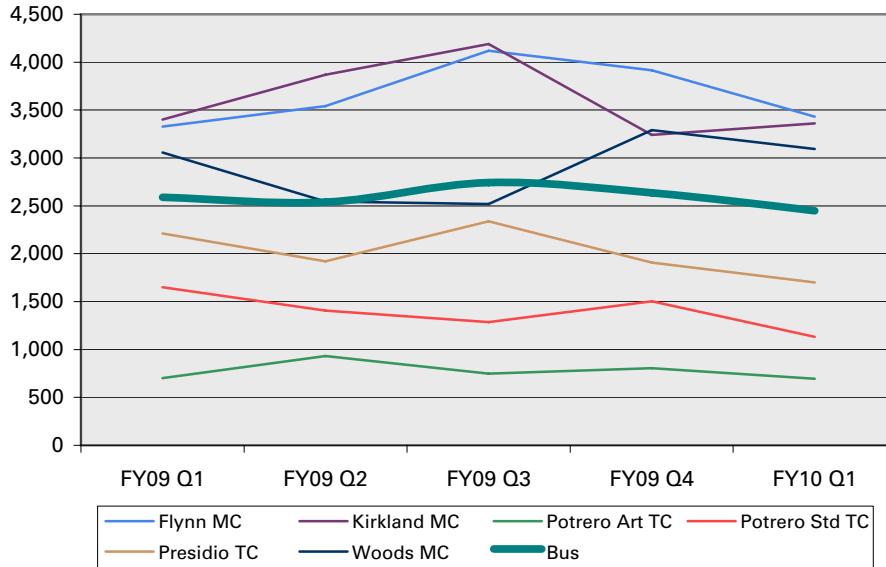
**Annual - FY09** | **Goals: Vary by unit; see FY09 goals below** | **Unscheduled Absences**



Reporting Period	Citations/ Cust Svc Center	Sust Str Admin	Sust Str Shops	Sust Str Trans Engineering	Parking Enforcement
FY05		5.2%	8.8%	6.6%	17.1%
FY06	13.8%	4.3%	10.1%	6.8%	15.7%
FY07	7.8%	4.2%	11.7%	5.8%	16.5%
FY08	7.9%	3.3%	8.8%	3.8%	15.2%
FY09	5.8%	2.5%	12.2%	4.1%	13.5%
FY09 Goal	7.4%	4.0%	10.5%	5.2%	14.9%

**Notes**  
*Sust Str: Sustainable Streets - Transportation Engineering*  
 A6 in FY08.

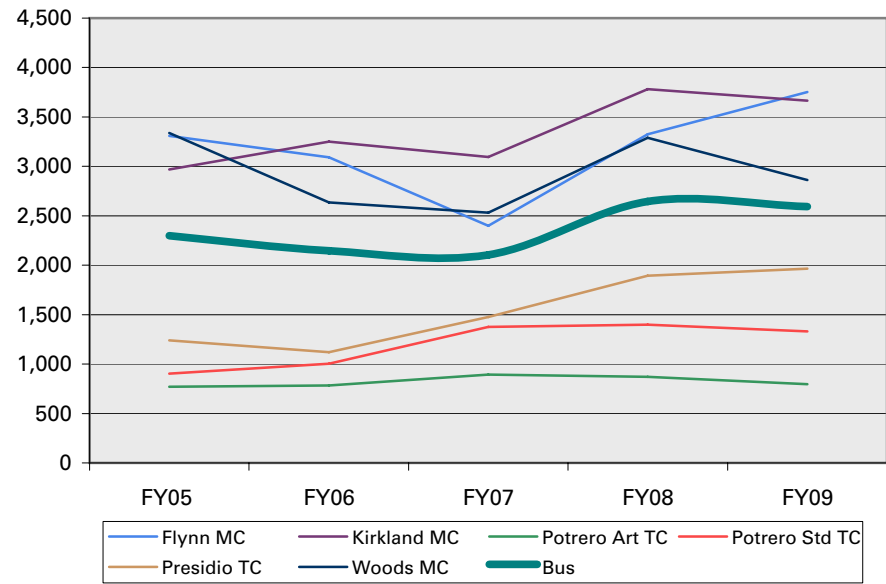
**Quarterly - FY10 Q1** Goals: Vary by division; see FY10 goals below MDBF



Reporting Period	Flynn MC	Kirkland MC	Potrero Art TC	Potrero Std TC	Presidio TC	Woods MC	Bus
FY09 Q1	3,326	3,400	703	1,649	2,210	3,058	2,588
FY09 Q2	3,542	3,867	932	1,405	1,920	2,546	2,539
FY09 Q3	4,120	4,190	748	1,285	2,337	2,519	2,741
FY09 Q4	3,915	3,240	806	1,504	1,908	3,290	2,637
FY10 Q1	3,431	3,362	696	1,133	1,701	3,092	2,449
FY10 Goal	3,400	3,400	1,000	1,700	1,700	3,400	2,611

Notes

**Annual - FY09** Goals: Vary by division see FY09 goals below MDBF



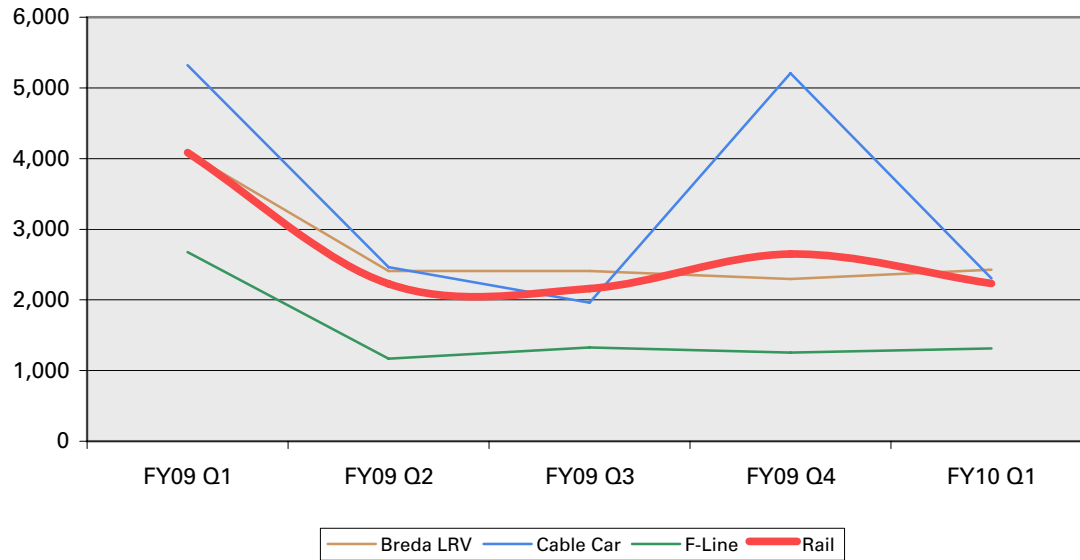
Reporting Period	Flynn MC	Kirkland MC	Potrero Art TC	Potrero Std TC	Presidio TC	Woods MC	Bus
FY05	3,309	2,970	770	902	1,239	3,337	2,299
FY06	3,093	3,251	785	1,004	1,121	2,636	2,146
FY07	2,398	3,094	893	1,377	1,477	2,533	2,105
FY08	3,325	3,780	872	1,400	1,895	3,289	2,645
FY09	3,752	3,665	796	1,332	1,967	2,862	2,592
FY09 Goal	3,400	3,400	1,000	1,700	1,700	3,400	2,611

Notes

MC: Motor Coach, TC: Trolley Coach, Art: Articulated, Std: Standard  
Overall goal for Bus is based on weighted average using # of vehicles by type/yard.

A7 in FY08.

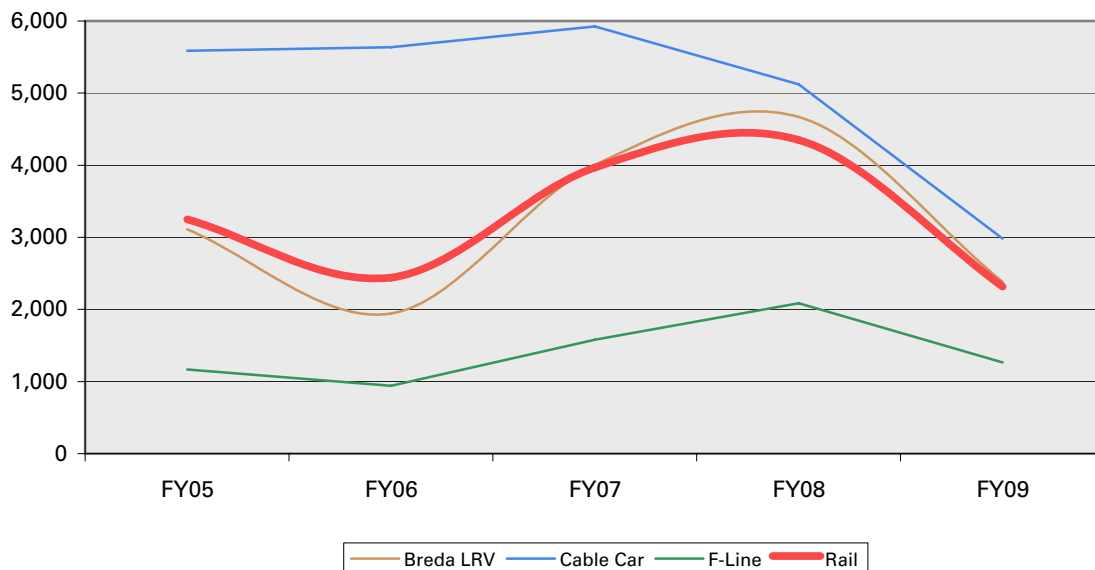
**Quarterly - FY10 Q1** **Goals: Vary by division; see FY10 goals below** MDBF



Reporting Period	Breda LRV	Cable Car	F-Line	Rail
FY09 Q1	4,085	5,320	2,677	4,085
FY09 Q2	2,408	2,462	1,170	2,226
FY09 Q3	2,410	1,959	1,326	2,162
FY09 Q4	2,294	5,206	1,253	2,648
FY10 Q1	2,428	2,307	1,311	2,233
<b>FY10 Goal</b>	<b>5,000</b>	<b>6,000</b>	<b>2,000</b>	<b>4,712</b>

**Notes**  
 Overall goal for Rail is based on weighted average using # of vehicles by type/yard.

**Annual - FY09** **Goals: Vary by division see FY09 goals below** MDBF

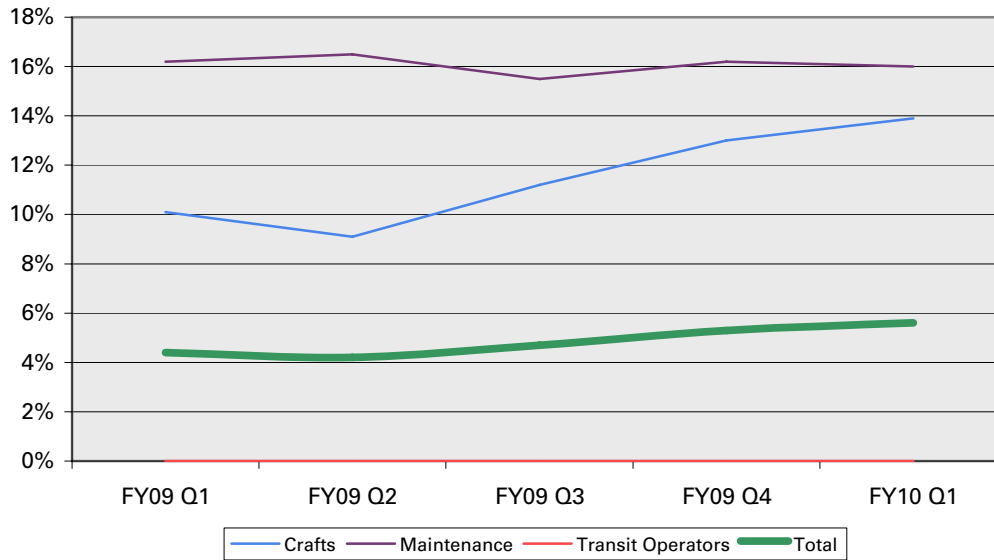


Reporting Period	Breda LRV	Cable Car	F-Line	Rail
FY05	3,112	5,586	1,167	3,248
FY06	1,943	5,638	940	2,442
FY07	4,001	5,924	1,582	3,966
FY08	4,669	5,120	2,084	4,348
FY09	2,385	2,984	1,265	2,317
<b>FY09 Goal</b>	<b>5,000</b>	<b>6,000</b>	<b>2,000</b>	<b>4,712</b>

**Notes**  
 A7 in FY08.

# A6 Vacancy Rates for Service Critical Positions

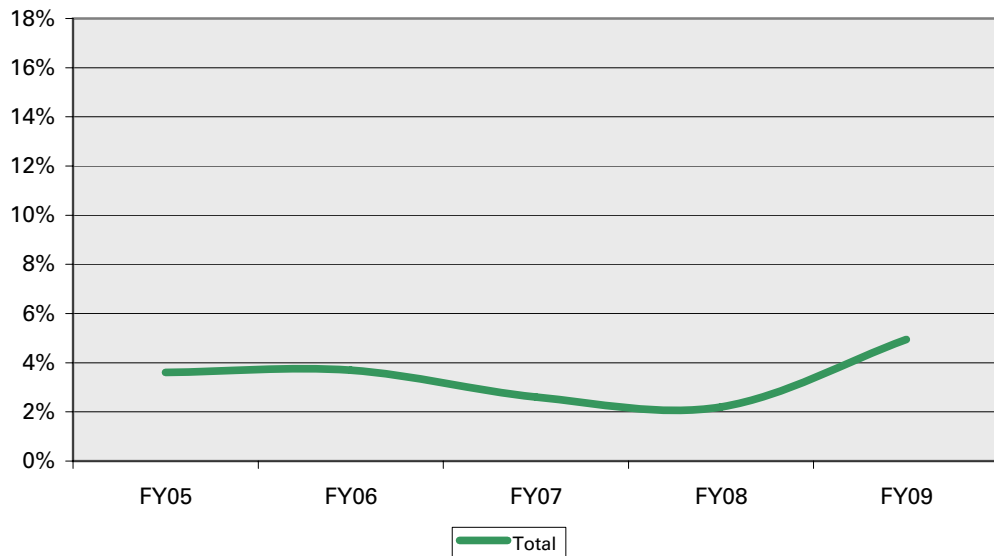
**Quarterly - FY10 Q1**      **Goal: <5%**      **Goal achieved?** ■      **Trend?** ■      Vacancy Rates



Reporting Period	Crafts	Maintenance	Transit Operators	Total
FY09 Q1	10.1%	16.2%	0.0%	4.4%
FY09 Q2	9.1%	16.5%	0.0%	4.2%
FY09 Q3	11.2%	15.5%	0.0%	4.7%
FY09 Q4	13.0%	16.2%	0.0%	5.3%
FY10 Q1	13.9%	16.0%	0.0%	5.6%
<b>FY10 Goal</b>	<b>5.0%</b>	<b>5.0%</b>	<b>5.0%</b>	<b>5.0%</b>

**Notes**  
 Effective Systemwide % of Extra Board Operators: 12%. Crafts positions are comprised of 59 different classifications. 11 are affiliated with Muni Metro East (MME). Maintenance positions are comprised of 19 different classes. Four are affiliated with MME.

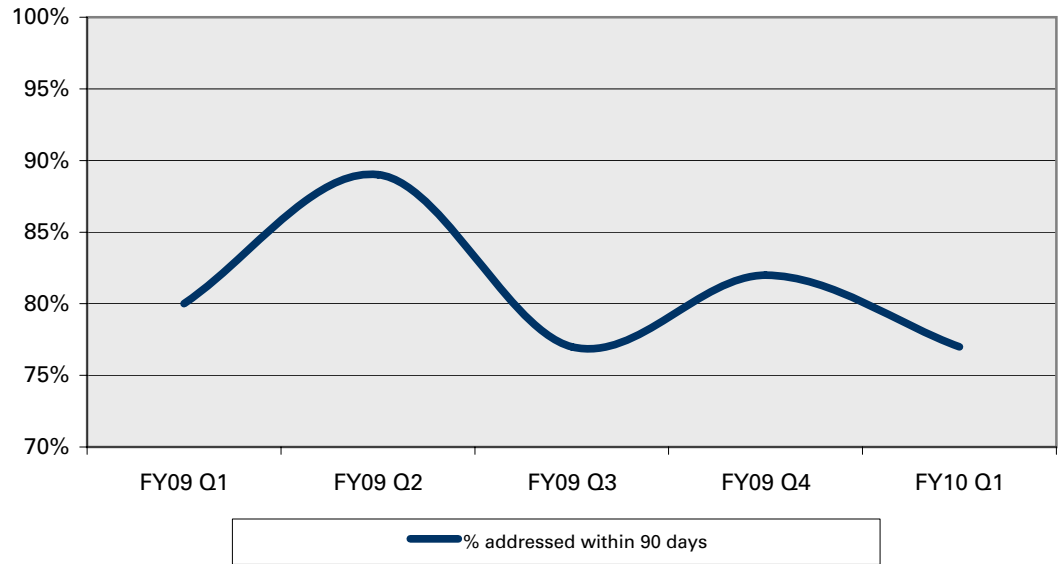
**Annual - FY09**      **Goal: <5%**      **Goal achieved?** ■      **Trend?** ■      Vacancy Rates



Reporting Period	Total			
FY05	3.6%			
FY06	3.7%			
FY07	2.6%			
FY08	2.2%			
FY09	5.0%			
<b>FY09 Goal</b>	<b>5.0%</b>			

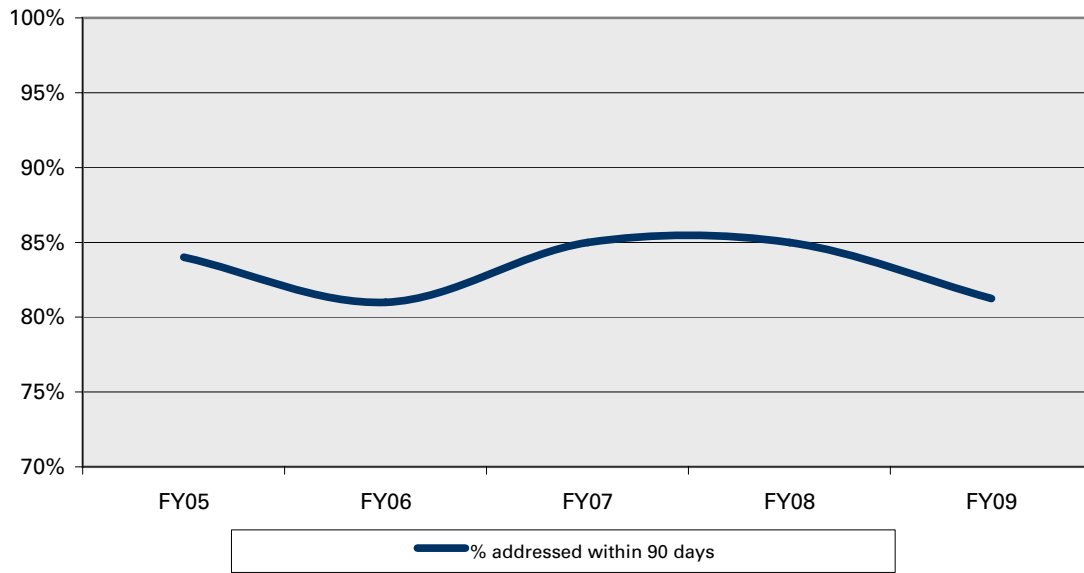
**Notes**  
 Results based on following position count: Transit Operators - 2034.75 FTE, Crafts 974 FTE, Maintenance 297 FTE.  
 A8 in FY08.

**Quarterly - FY10 Q1**      **Goal: >82%**    **Goal achieved?** ■    **Trend?** ■      Traffic and Parking Control Requests



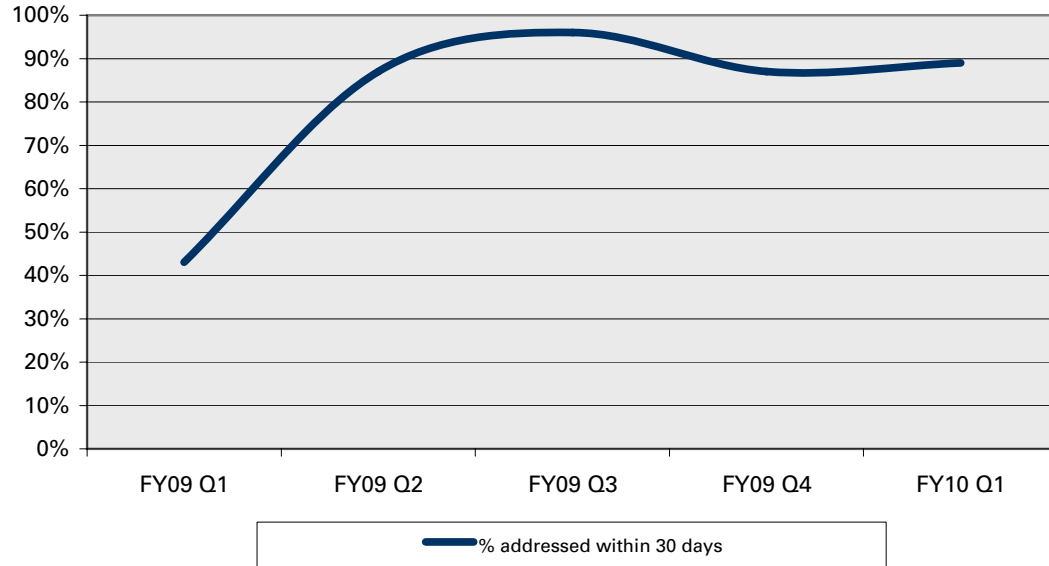
Reporting Period	% addressed within 90 days
FY09 Q1	80%
FY09 Q2	89%
FY09 Q3	77%
FY09 Q4	82%
FY10 Q1	77%
<i>FY10 Goal</i>	82%
<b>Notes</b>	
<i>134 of 175 requests were handled within 90 days.</i>	

**Annual - FY09**      **Goal: >82%**    **Goal achieved?** ■    **Trend?** ■      Traffic and Parking Control Requests



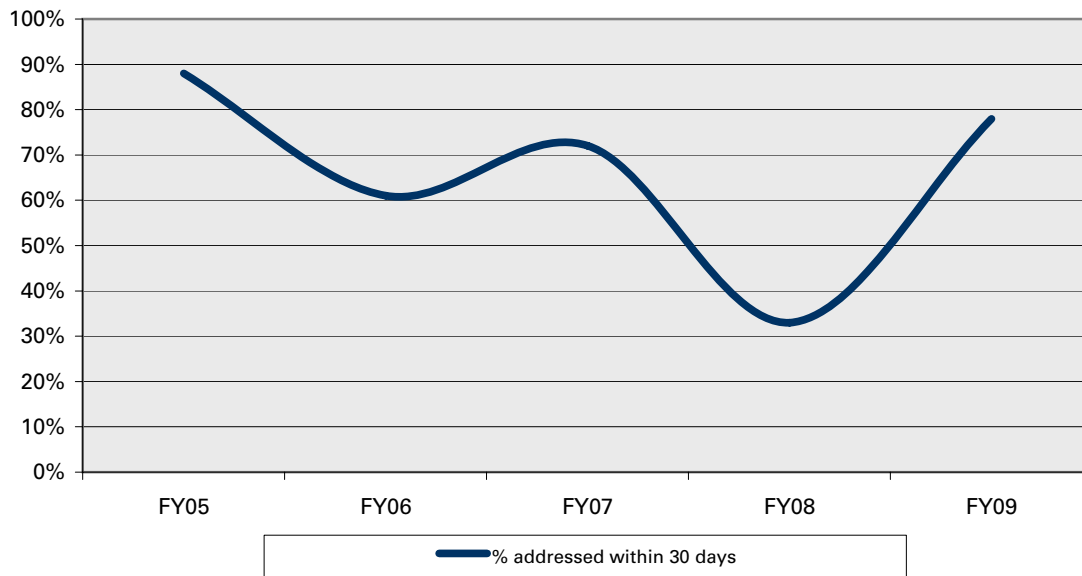
Reporting Period	% addressed within 90 days
FY05	84%
FY06	81%
FY07	85%
FY08	85%
FY09	81%
<i>FY09 Goal</i>	82%
<b>Notes</b>	
<i>A9 in FY08.</i>	

**Quarterly - FY10 Q1**      **Goal: >90%**    **Goal achieved?** ■    **Trend?** ■      Color Curb Applications



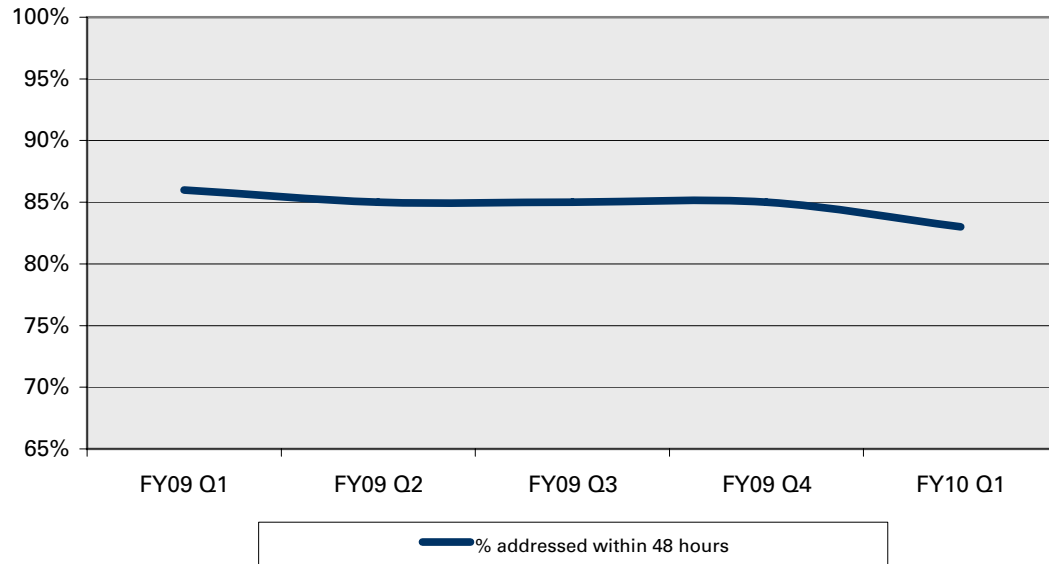
Reporting Period	% addressed within 30 days
FY09 Q1	43%
FY09 Q2	87%
FY09 Q3	96%
FY09 Q4	87%
FY10 Q1	89%
<b>FY10 Goal</b>	<b>90%</b>
<b>Notes</b>	

**Annual - FY09**      **Goal: >90%**    **Goal achieved?** ■    **Trend?** ■      Color Curb Applications



Reporting Period	% addressed within 30 days
FY05	88%
FY06	61%
FY07	72%
FY08	33%
FY09	78%
<b>FY09 Goal</b>	<b>90%</b>
<b>Notes</b>	
A10 in FY08.	

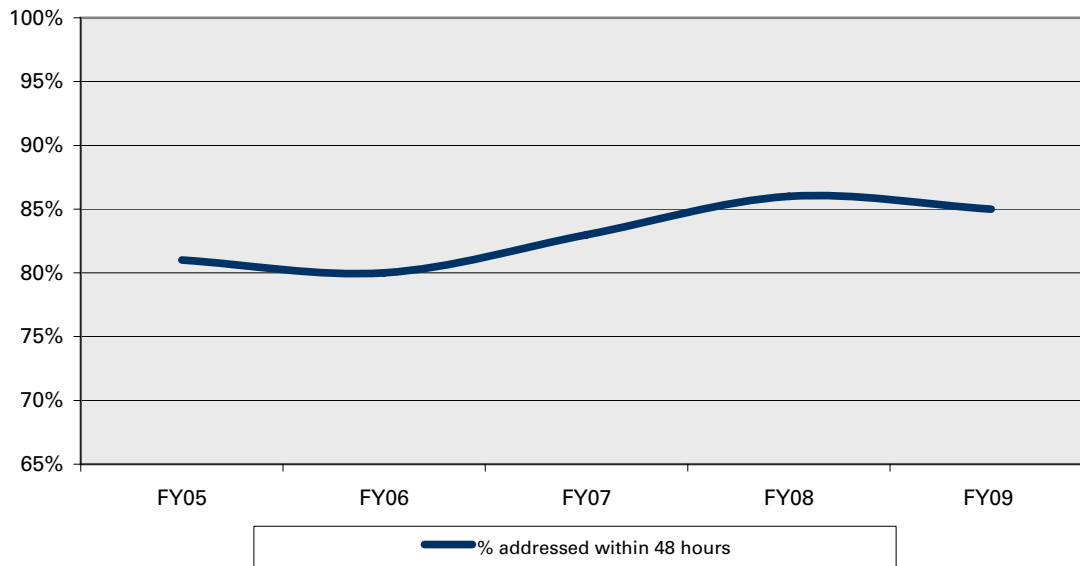
**Quarterly - FY10 Q1**      **Goal: >85%**    **Goal achieved?** ■    **Trend?** ■      Parking Meter Malfunction Reports



Reporting Period	% addressed within 48 hours
FY09 Q1	86%
FY09 Q2	85%
FY09 Q3	85%
FY09 Q4	85%
FY10 Q1	83%
<i>FY10 Goal</i>	<i>85%</i>

**Notes**  
*513 of 619 malfunction reports were addressed within 48 hours. Implementation of the meter rate increase in July and August and work Port implementation issues had an impact on the team's ability to meet the 85% goal.*

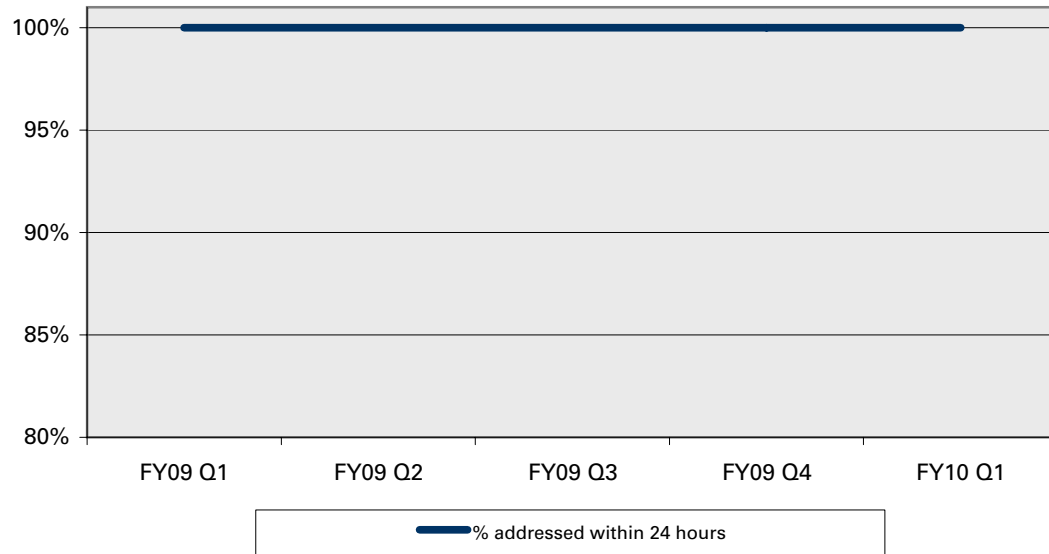
**Annual - FY09**      **Goal: >85%**    **Goal achieved?** ■    **Trend?** ■      Parking Meter Malfunction Reports



Reporting Period	% addressed within 48 hours
FY05	81%
FY06	80%
FY07	83%
FY08	86%
FY09	85%
<i>FY09 Goal</i>	<i>85%</i>

**Notes**  
*A11 in FY08.*

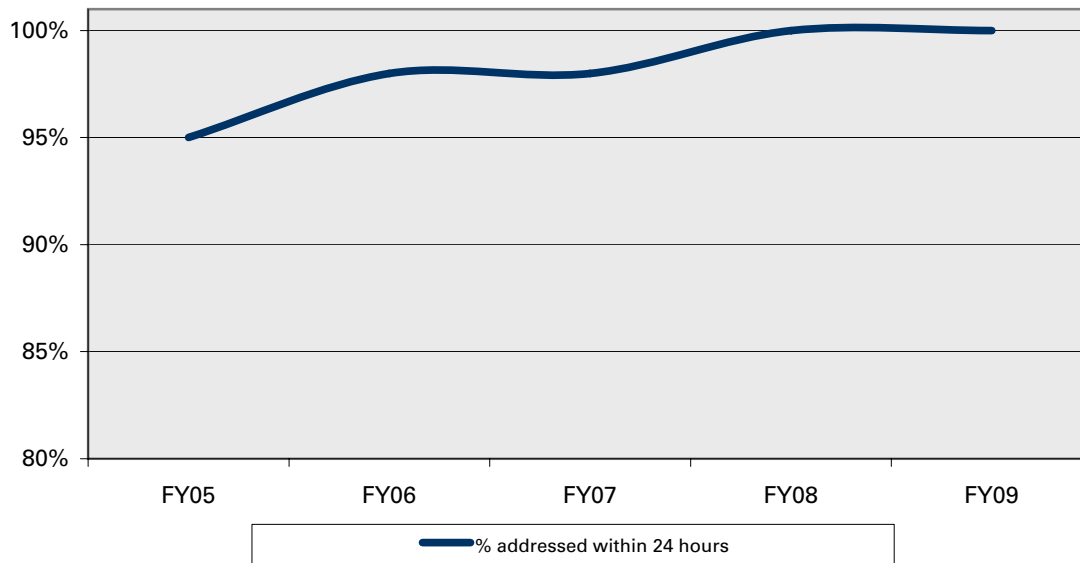
**Quarterly - FY10 Q1**      **Goal: >98%**    **Goal achieved?** ■    **Trend?** ■      Hazardous Traffic Sign Reports



Reporting Period	% addressed within 24 hours
FY09 Q1	100%
FY09 Q2	100%
FY09 Q3	100%
FY09 Q4	100%
FY10 Q1	100%
<i>FY10 Goal</i>	<i>98%</i>

**Notes**  
*All 913 hazardous traffic sign reports were addressed within 24 hours.*

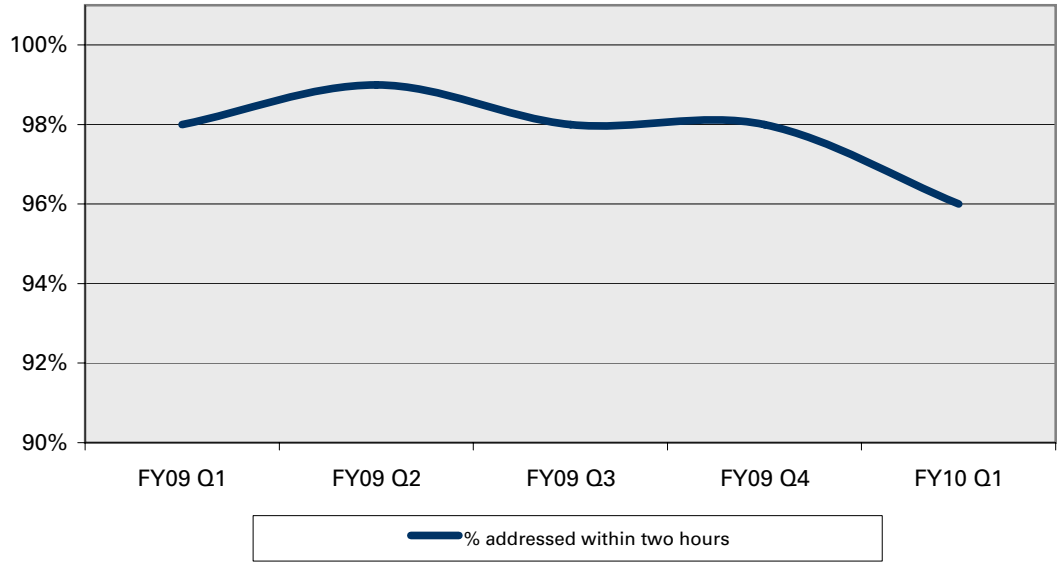
**Annual - FY09**      **Goal: >98%**    **Goal achieved?** ■    **Trend?** ■      Hazardous Traffic Sign Reports



Reporting Period	% addressed within 24 hours
FY05	95%
FY06	98%
FY07	98%
FY08	100%
FY09	100%
<i>FY09 Goal</i>	<i>98%</i>

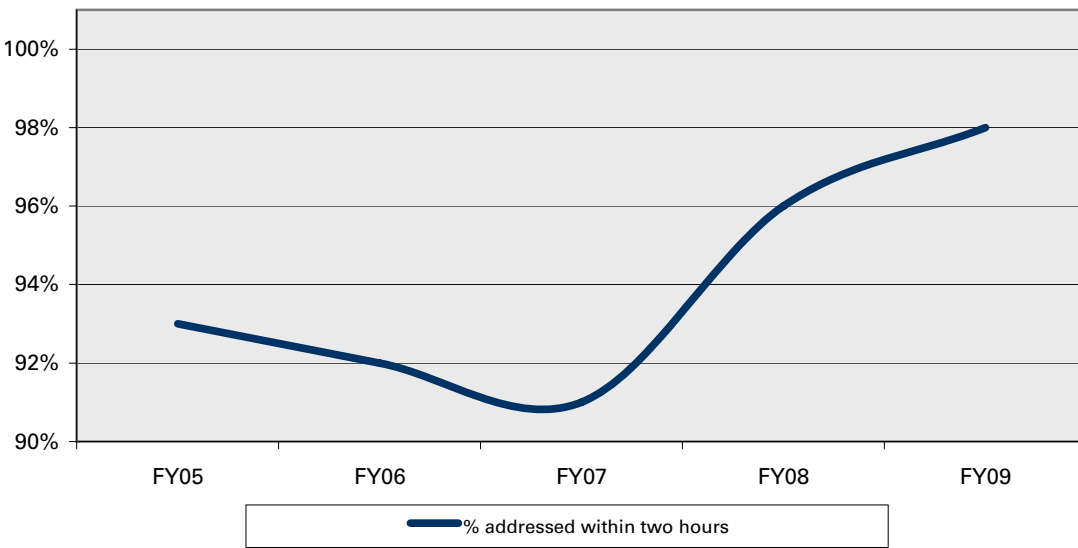
**Notes**  
*A12 in FY08.*

**Quarterly - FY10 Q1**      **Goal: >92%**    **Goal achieved?** ■    **Trend?** ■      Hazardous Traffic Signal Reports



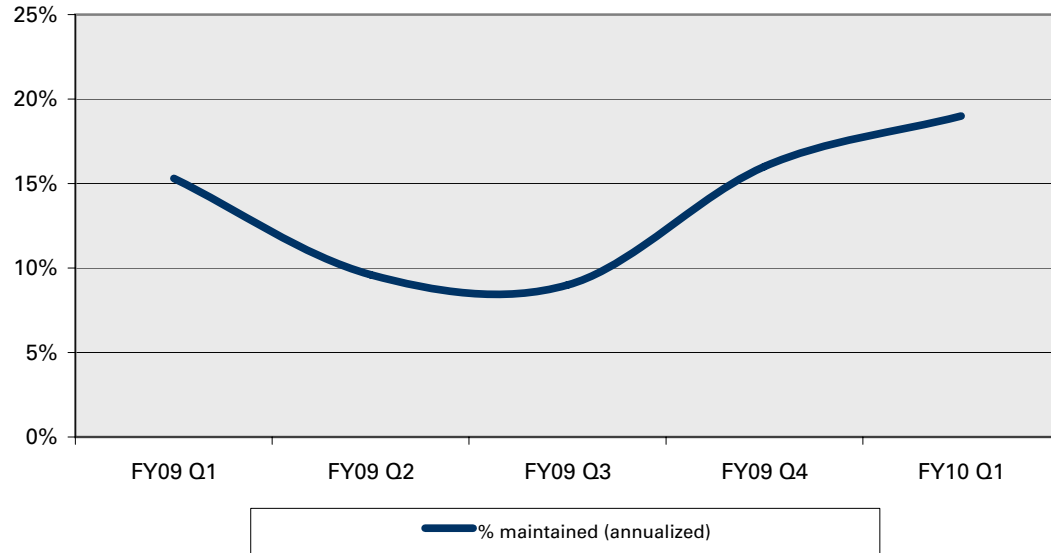
Reporting Period	% addressed within two hours
FY09 Q1	98%
FY09 Q2	99%
FY09 Q3	98%
FY09 Q4	98%
FY10 Q1	96%
<i>FY10 Goal</i>	92%
<b>Notes</b>	
<i>637 of 659 hazardous traffic signal reports were addressed within 2 hours.</i>	

**Annual - FY09**      **Goal: >92%**    **Goal achieved?** ■    **Trend?** ■      Hazardous Traffic Signal Reports



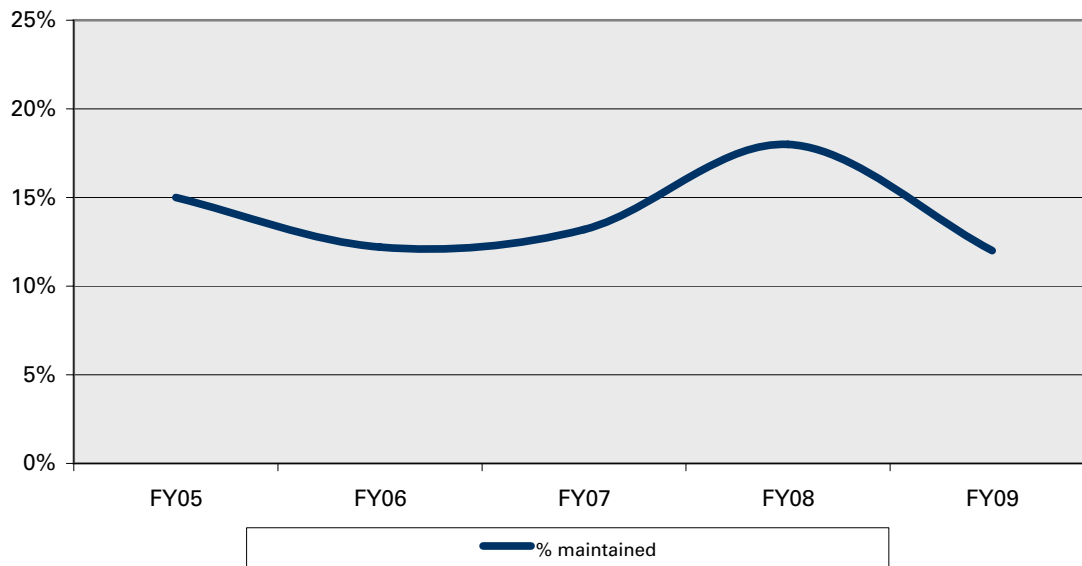
Reporting Period	% addressed within two hours
FY05	93%
FY06	92%
FY07	91%
FY08	96%
FY09	98%
<i>FY09 Goal</i>	92%
<b>Notes</b>	
<i>A13 in FY08.</i>	

**Quarterly - FY10 Q1**      **Goal: >12%**    **Goal achieved?** ■    **Trend?** ■      Traffic Lane Lines, Bus Zones and Crosswalks



Reporting Period	% maintained (annualized)
FY09 Q1	15%
FY09 Q2	10%
FY09 Q3	9%
FY09 Q4	16%
FY10 Q1	19%
<i>FY10 Goal</i>	12%
<b>Notes</b>	

**Annual - FY09**      **Goal: >12%**    **Goal achieved?** ■    **Trend?** ■      Traffic Lane Lines, Bus Zones and Crosswalks

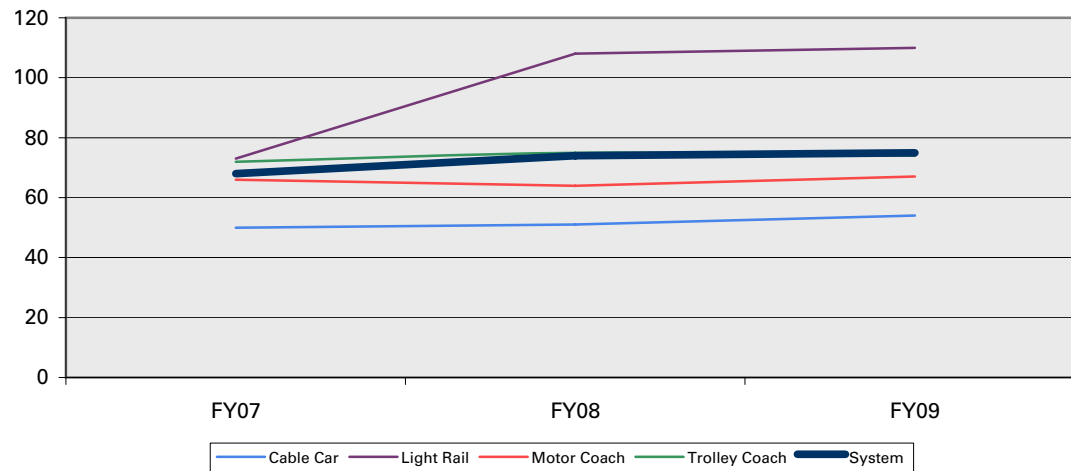


Reporting Period	% maintained
FY05	15%
FY06	12%
FY07	13%
FY08	18%
FY09	12%
<i>FY09 Goal</i>	12%
<b>Notes</b>	
A14 in FY08.	

## A13 Productivity | Average # of Boardings per Service Hour

### Annual - FY09

### Average # of Boardings per Service Hour



Reporting Period	Cable Car	Light Rail	Motor Coach	Trolley Coach	System
FY07	50	73	66	72	68
FY08	51	108	64	75	74
FY09	54	110	67	74	75

**Notes**

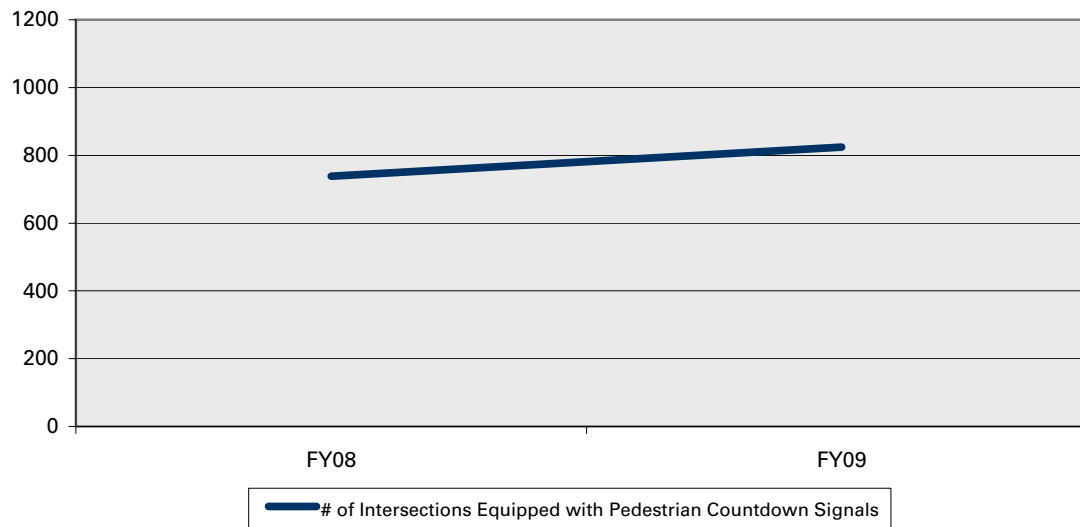
Results are unaudited. A data collection methodology change in FY09 resulted in an increase in light rail figures.

## A14 Pedestrian Safety | # of Intersections Equipped with Countdown Signals

### Annual - FY09

### FY09 Goal: >776

### # of Intersections Equipped with Countdown Signals



Reporting Period	# of Intersections Equipped with Pedestrian Countdown Signals
FY08	738
FY09	824

**Notes**

824 of 1176 signalized intersections are fully equipped with pedestrian countdown signals. An additional 153 intersections are partially equipped.

**Quarterly - FY10 Q1**

Bicycle Counts at Key Locations

Awaiting installation of automated counters.  
 Results will be reporting beginning as soon as data become available.

**A16 Congestion Management | Level of Service on Principal Arterials/Freeways**

**Annual - 2007**

Level of Service of on Principal Arterials

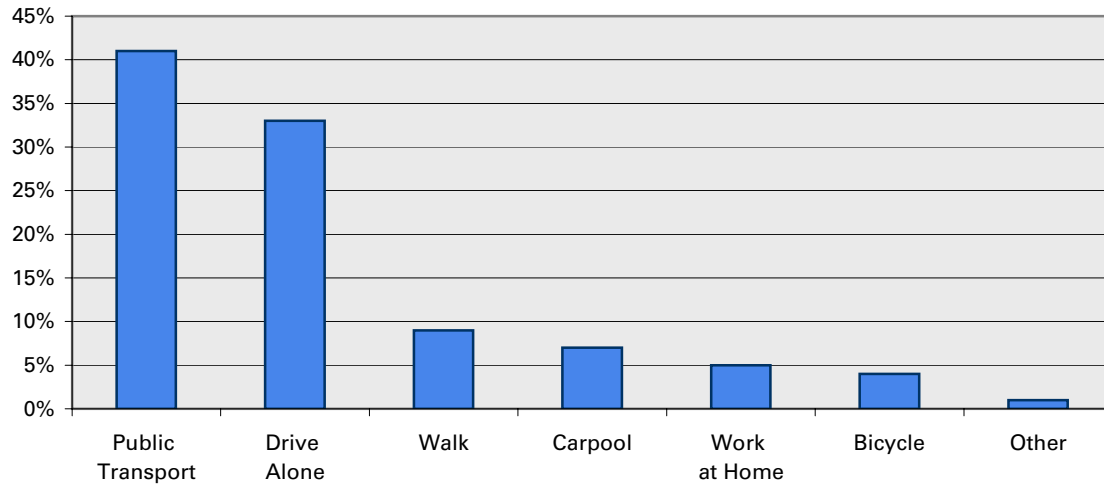
<b>Average Travel Speeds</b>		
<b>Arterial</b>	<b>AM</b>	<b>PM</b>
Class I Arterial	27.2	27.1
Class II Arterial	17.2	15.9
Class III Arterial	17.8	16.5
Freeway	47.8	40.3

<b>AM Peak Period Level of Service "F" Segments</b>
Castro/Divisadero: Geary to Pine NB
Fell: Gough to Laguna WB
Geneva: Cayuga to Ocean WB
Octavia: Fell to Market SB
US-101: I-80 to Market NB

<b>PM Peak Period Level of Service "F" Segments</b>
Drumm: Washington to Market SB
Geneva: Cayuga to Ocean WB
Montgomery: Broadway to Bush SB
O'Farrell: Mason to Market EB
Pine: Market to Kearney WB
Stanyan: Turk to Fulton SB
I-80: Treasure Island to Fremont Exit SB
I-80: Fremont to US-101 SB
US-101: Market to I-80 SB
I-80: US-101 to Fremont NB

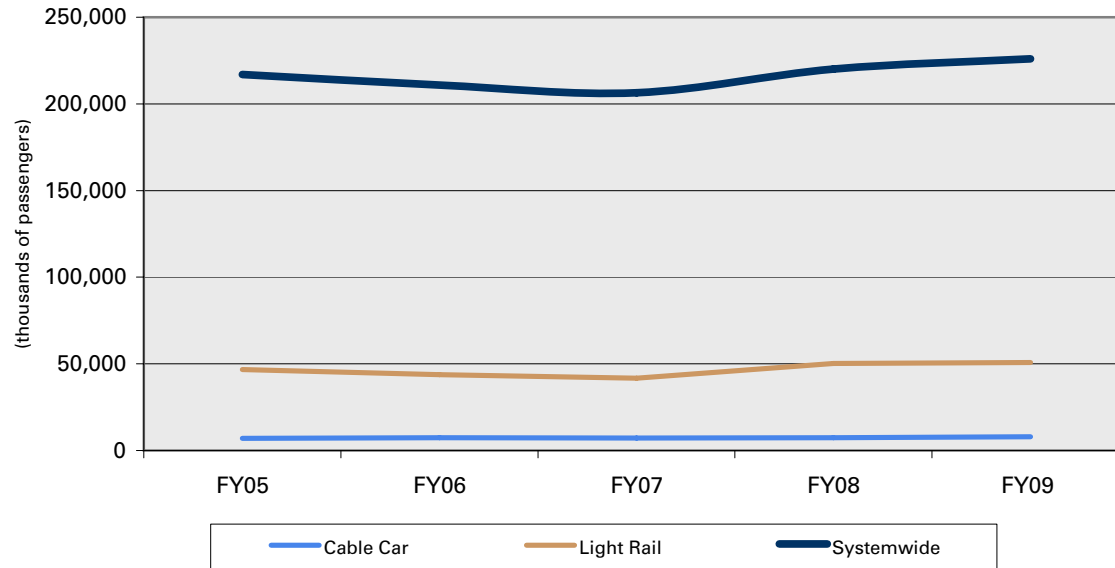
**Annual - 2009**

**What is your primary mode of transportation to work?**



City Survey Results			
Mode	%	Mode	%
Public Transport	41%	Work at Home	5%
Drive Alone	33%	Bicycle	4%
Walk	9%	Other	1%
Carpool	7%		
Notes			
<p><i>Results are from the January 1, 2009 City Survey conducted by the Office of the Controller. Citizens were asked "What is your primary mode of transportation to work? Nine out of ten residents ride Muni at least once a month.</i></p>			

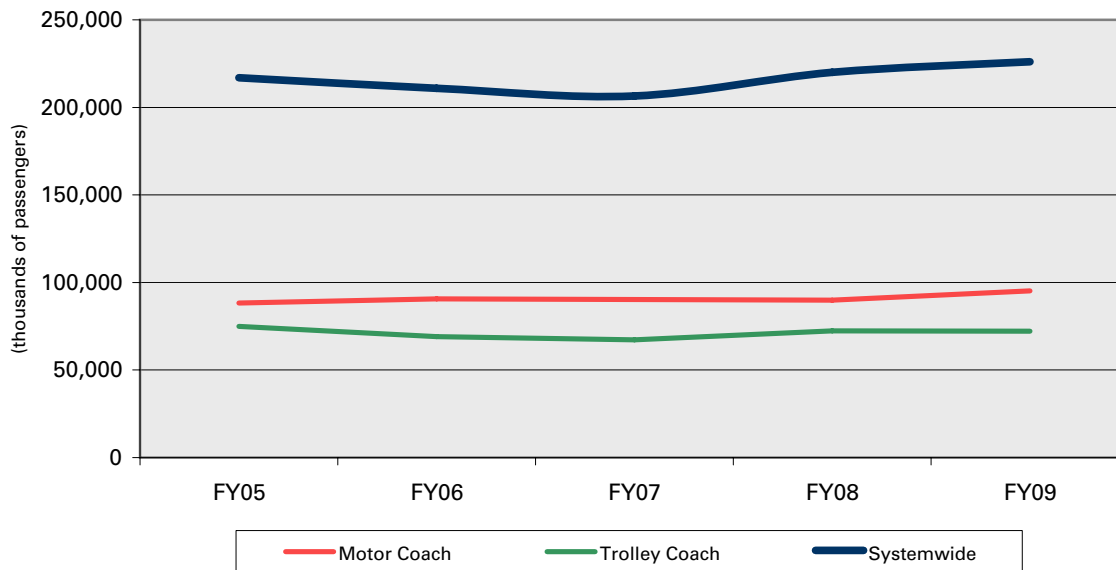
**Annual - FY09**      **FY09 Goal: 223,254**      **Goal achieved?**       **Trend?**       **Rail** (in thousands of passengers)



Reporting Period	Cable Car	Light Rail	Systemwide
FY05	0	46,803	216,919
FY06	0	43,679	210,849
FY07	0	41,737	206,459
FY08	0	50,312	220,044
FY09	0	50,745	225,990
<i>FY09 Goal</i>			<i>223,254</i>

**Notes**  
 FY09 results are unaudited. Systemwide included on chart for reference purposes. FY10 Goal for Systemwide ridership will be 229,380,000 (expressed as 229,380 on this chart).

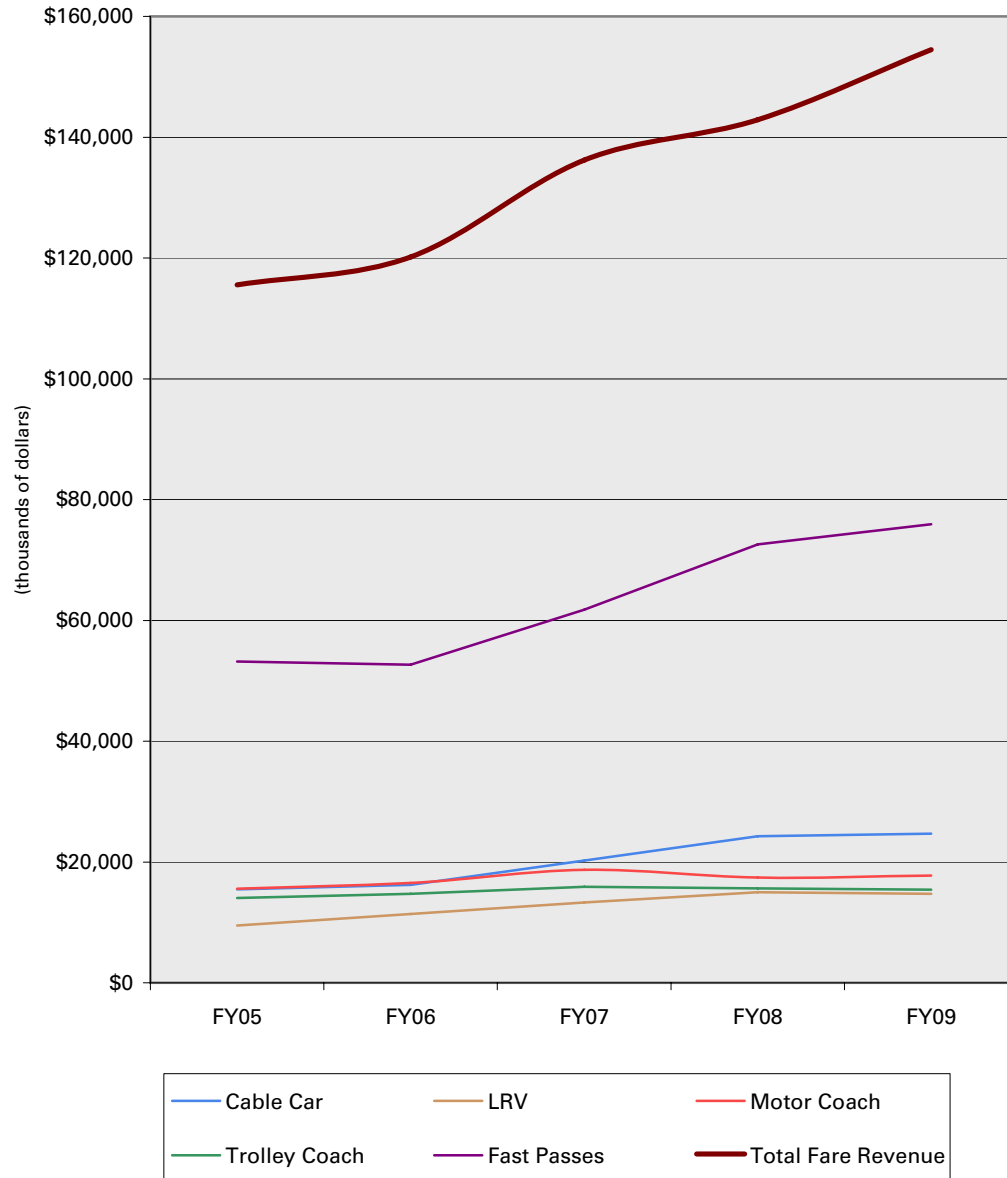
**Annual - FY09**      **FY08 Goal: 223,254**      **Goal achieved?**       **Trend?**       **Bus** (in thousands of passengers)



Reporting Period	Motor Coach	Trolley Coach	Systemwide
FY05	88,209	74,941	216,919
FY06	90,630	69,065	210,849
FY07	90,303	67,297	206,459
FY08	89,913	72,394	220,044
FY09	95,190	72,142	225,990
<i>FY09 Goal</i>			<i>223,254</i>

**Notes**  
 FY09 results are unaudited. Systemwide included on chart for reference purposes. FY10 Goal for Systemwide ridership will be 229,380,000 (expressed as 229,380 on this chart).

**Annual - FY09**      **Goal: > \$153,273**      **Goal achieved?**       **Trend?**       Revenue (in thousands of dollars)



Reporting Period	Cable Car	LRV	Motor Coach	Trolley Coach	Fast Passes
FY05	\$15,446	\$9,488	\$15,578	\$14,061	\$53,171
FY06	\$16,207	\$11,405	\$16,504	\$14,743	\$52,645
FY07	\$20,244	\$13,306	\$18,705	\$15,903	\$61,798
FY08	\$24,248	\$14,983	\$17,436	\$15,644	\$72,581
FY09	\$24,663	\$14,725	\$17,774	\$15,421	\$75,925

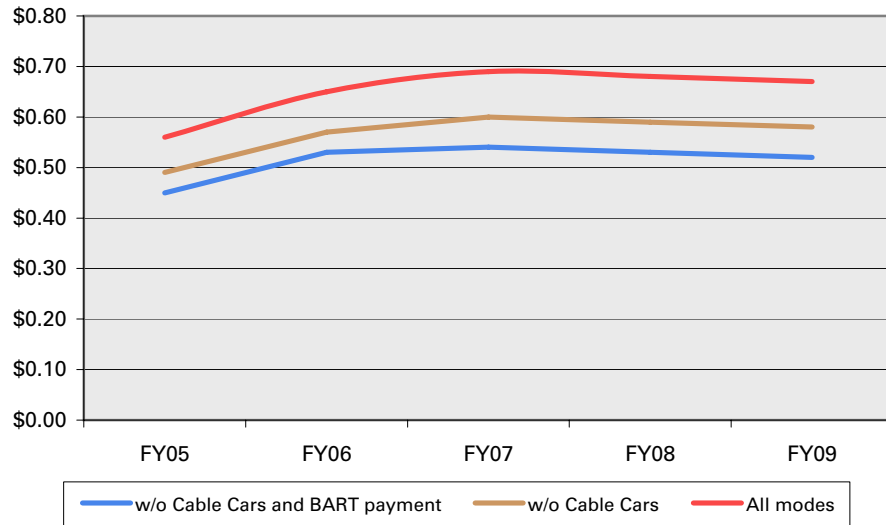
**Notes**  
 FY09 results are unaudited.

Reporting Period	Other Fare Media	Para-transit	Charter	Total Fare Revenue
FY05	\$6,498	\$1,271	\$23	\$115,538
FY06	\$7,285	\$1,375	\$20	\$120,184
FY07	\$4,865	\$1,411	\$2	\$136,234
FY08	\$4,753	\$1,645	\$1	\$151,290
FY09	\$4,320	\$1,677	\$4	\$154,509

**Notes**  
 FY09 results are unaudited. FY09 Fare Revenue Goal: \$153,273. FY10 Goal: \$156,827

**Annual - FY09**

Average Fare (based on unlinked trips)



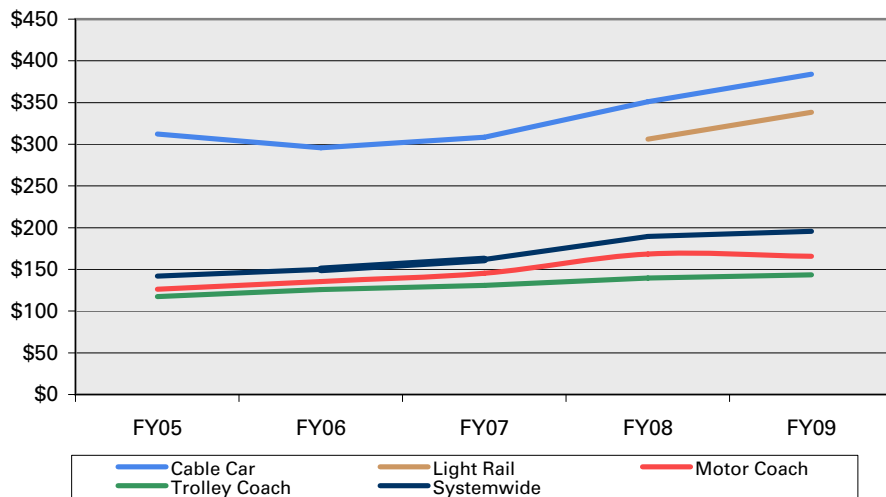
Reporting Period	w/o Cable Cars and BART payment	w/o Cable Cars	All modes
FY05	\$0.45	\$0.49	\$0.56
FY06	\$0.53	\$0.57	\$0.65
FY07	\$0.54	\$0.60	\$0.69
FY08	\$0.53	\$0.59	\$0.68
FY09	\$0.52	\$0.58	\$0.67

**Notes**

*FY09 results are unaudited. B2 in FY08.*

**Annual - FY09**

Fully Allocated Service Cost by Mode

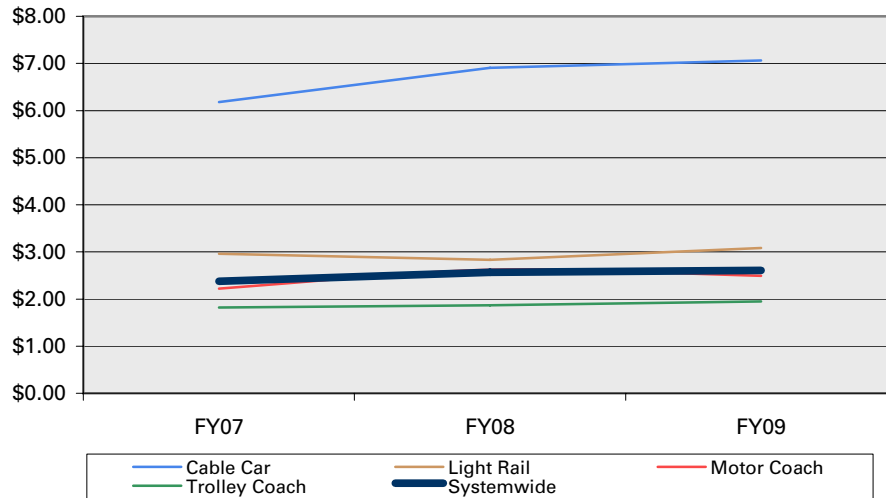


Reporting Period	Cable Car	Light Rail	Motor Coach	Trolley Coach	Systemwide
FY05	\$312.13		\$126.20	\$117.30	\$141.91
FY06	\$295.88		\$135.45	\$125.94	\$149.85
FY07	\$308.55		\$145.44	\$130.88	\$161.97
FY08	\$351.17	\$306.21	\$168.50	\$139.74	\$189.62
FY09	\$384.16	\$338.27	\$165.87	\$143.53	\$195.55

**Notes**

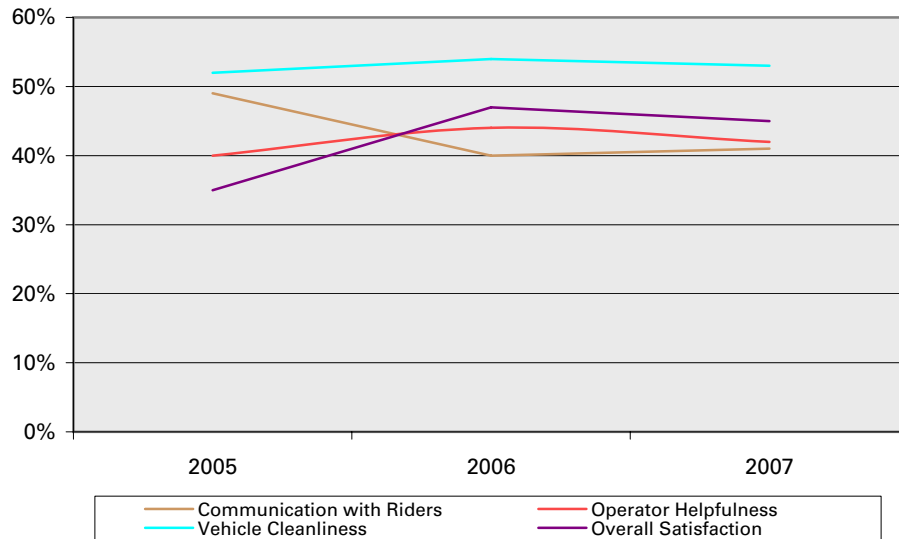
*FY09 results are unaudited. B3 in FY08.*

**Annual - FY09** Operating Expense per Passenger Boarding



Reporting Period	Cable Car	Light Rail	Motor Coach	Trolley Coach	Systemwide
FY07	\$6.18	\$2.96	\$2.22	\$1.82	\$2.38
FY08	\$6.91	\$2.83	\$2.62	\$1.87	\$2.57
FY09	\$7.06	\$3.08	\$2.49	\$1.95	\$2.61
<b>Notes</b>					
<i>FY09 results are unaudited. B4 in FY08.</i>					

**Annual - 2007** | **Goal: year over year improvement** | Muni Service - % of Customers Rating Service Excellent/Good



Reporting Period	Communication with Riders	Operator Helpfulness	Vehicle Cleanliness	Overall Satisfaction
2005	49%	40%	52%	35%
2006	40%	44%	54%	47%
2007	41%	42%	53%	45%

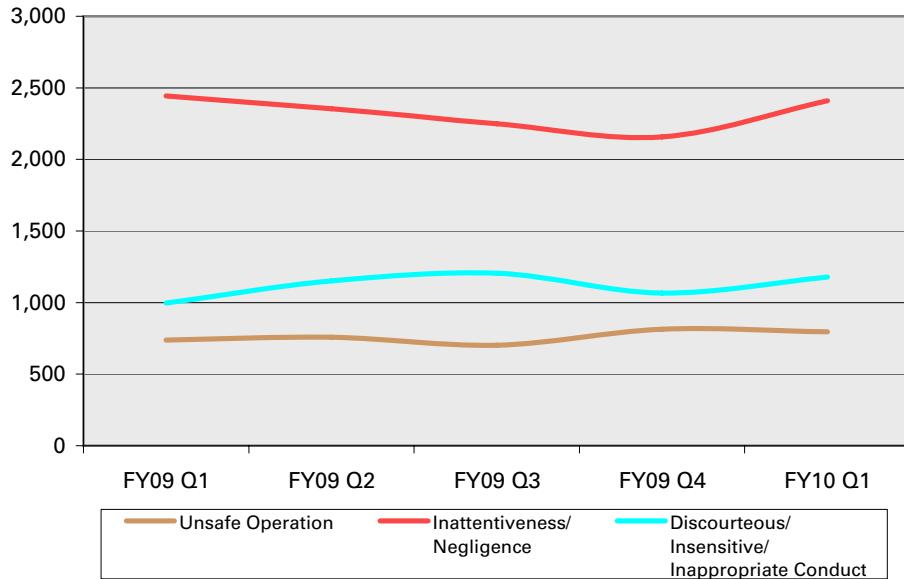
**Notes**  
 While the Customer Survey was not completed in 2008, scores (on a five point scale) from the Office of the Controller's 2009 City Survey were as follows: Convenience of Routes 3.63, Timeliness/Reliability 2.98, Cleanliness 2.98, Fares 3.58, Safety 3.24, Communication to Passengers 3.00, Courtesy of Drivers 3.14. Overall performance increased from the 2007 survey.

**Annual - 2008** | **Goal: year over year improvement** | Pedestrian Safety and Bicycle Network Related Perceptions

Reporting Period	Pedestrian Safety "How Safe Do you Feel Crossing the Street?"	Bicycle Network "There is enough room on most streets to cycle."
2007	3.27	NA
2008/09	3.49	18% Agree/Strongly Agree

**Notes**  
 Pedestrian Safety scores come from the City Survey conducted by the Office of the Controller, and Bicycle Satisfaction scores come from the biennial State of Cycling Report.

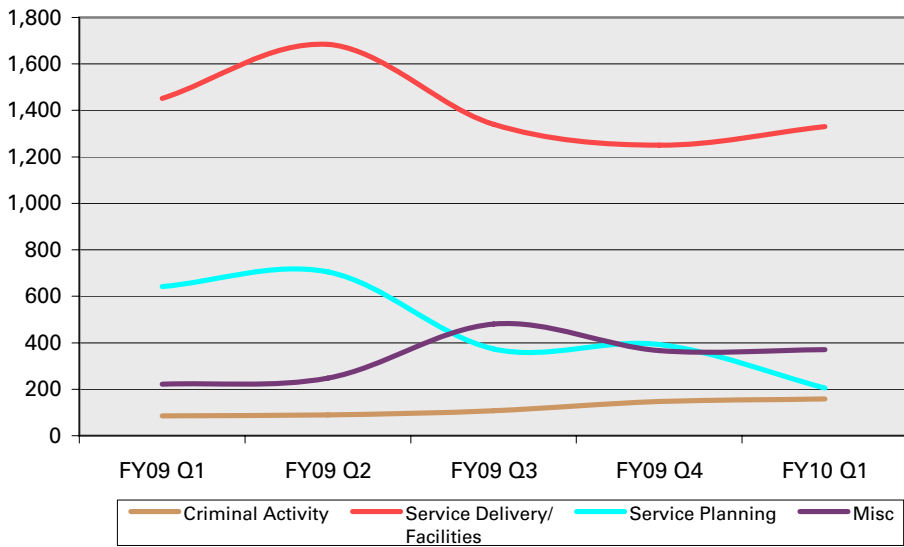
**Quarterly - FY10 Q1** **Employee Conduct**



Reporting Period	Unsafe Operation	Inattentiveness/Negligence	Discourteous/Insensitive/Inappropriate Conduct	Total
FY09 Q1	737	2,443	997	4,177
FY09 Q2	758	2,355	1,151	4,264
FY09 Q3	701	2,249	1,205	4,155
FY09 Q4	814	2,157	1,067	4,038
FY10 Q1	796	2,409	1,179	4,384

**Notes**  
 423 complaints regarding alleged ADA violations were received during the quarter.

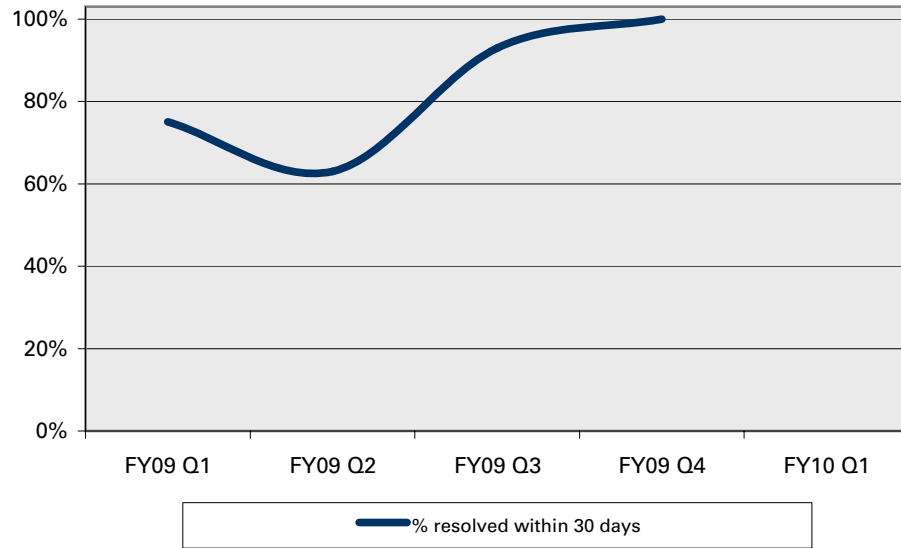
**Quarterly - FY10 Q1** **Products and Services**



Reporting Period	Criminal Activity	Service Delivery/Facilities	Service Planning	Misc	Total
FY09 Q1	86	1,452	642	222	2,402
FY09 Q2	89	1,684	705	248	2,726
FY09 Q3	108	1,340	373	480	2,301
FY09 Q4	148	1,251	392	366	2,157
FY10 Q1	158	1,330	205	371	2,064

**Notes**

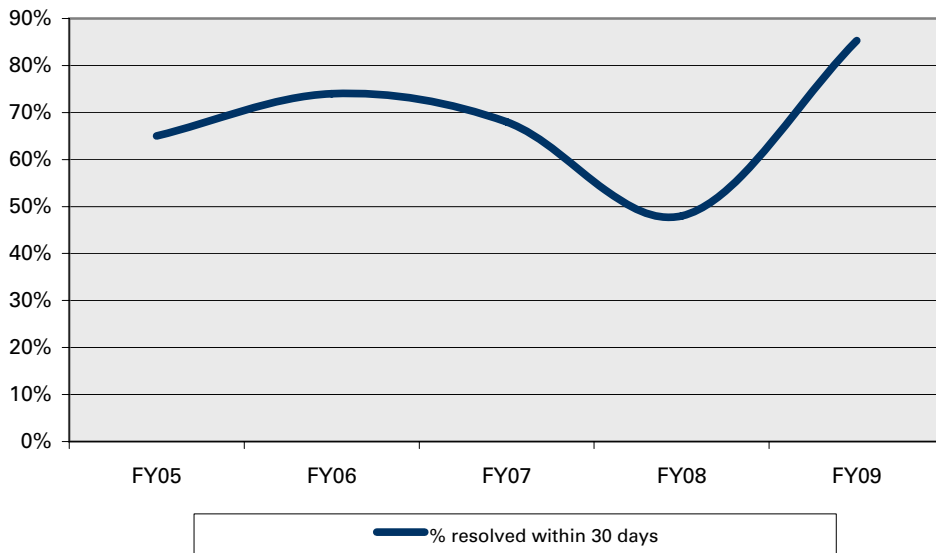
**Quarterly - FY10 Q1**    **Goal: >85%**    **Goal achieved?**     **Trend?**     Operator Complaints



Reporting Period	% resolved within 30 days	% operator conduct PSRs resolved in 14 days	% of ADA violations resolved in 45 days	% of products/services PSRs resolved in 4 5 days
FY09 Q1	75%			
FY09 Q2	63%			
FY09 Q3	93%			
FY09 Q4	100%			
FY10 Q1		84.6%	n/a	n/a
<i>FY10 Goal</i>		<i>85%</i>	<i>85%</i>	<i>85%</i>

**Notes**  
*Calculation of ADA violation and products/services complaint resolution rates will begin in FY10 Q2. Chart will be updated in FY10 Q2 as well.*

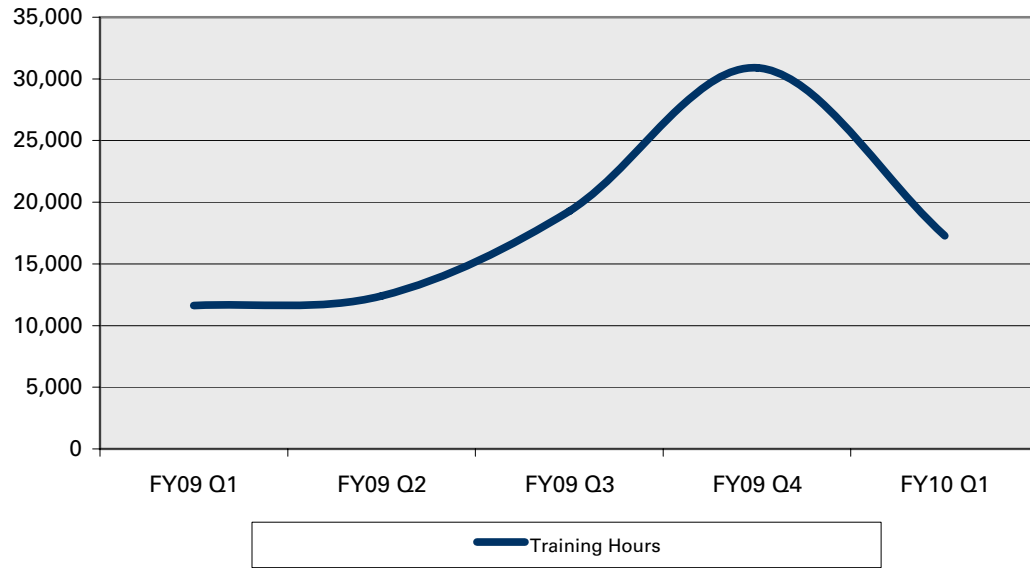
**Annual - FY09**    **Goal: >75%**    **Goal achieved?**     **Trend?**     Operator Complaints



Reporting Period	% resolved within 30 days	% operator conduct PSRs resolved in 14 days	% of ADA violations resolved in 45 days	% of products/services PSRs resolved in 4 5 days
FY05	65%			
FY06	74%			
FY07	68%			
FY08	48%			
FY09	85%			
<i>FY09 Goal</i>	<i>75%</i>			

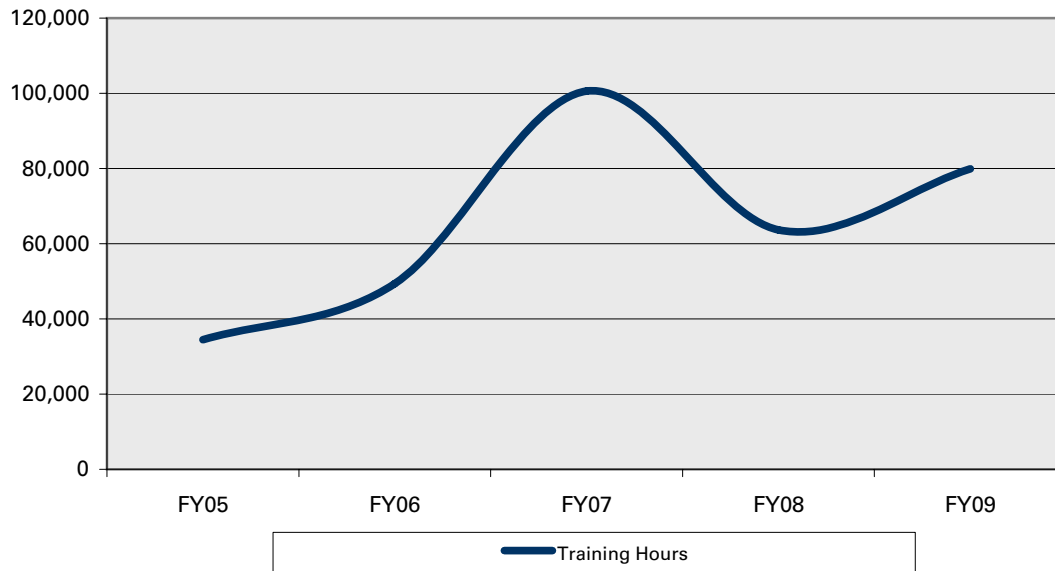
**Notes**  
*Historically, the Agency has only calculated the resolution rate for complaints involving alleged ADA violations. Beginning in FY10, the resolution rate for all complaints will be tabulated.*

**Quarterly - FY10 Q1**      **Goal: >50,000 hrs**      **Goal achieved?** ■ **Trend?** ■      Training Hours



Reporting Period	Training Hours
FY09 Q1	11,632
FY09 Q2	12,408
FY09 Q3	19,290
FY09 Q4	30,913
FY10 Q1	17,289
<i>FY10 Goal</i>	<i>12,500 per quarter</i>
<b>Notes</b>	
<i>New employee training for transit supervisors and operators removed from tally starting in FY08.</i>	

**Annual - FY09**      **Goal: >50,000 hrs**      **Goal achieved?** ■ **Trend?** ■      Training Hours



Reporting Period	Training Hours
FY05	34,464
FY06	49,390
FY07	100,582
FY08	63,698
FY09	79,900
<i>FY09 Goal</i>	<i>50,000</i>
<b>Notes</b>	
<i>New employee training for transit supervisors and operators removed from tally starting in FY08.</i>	

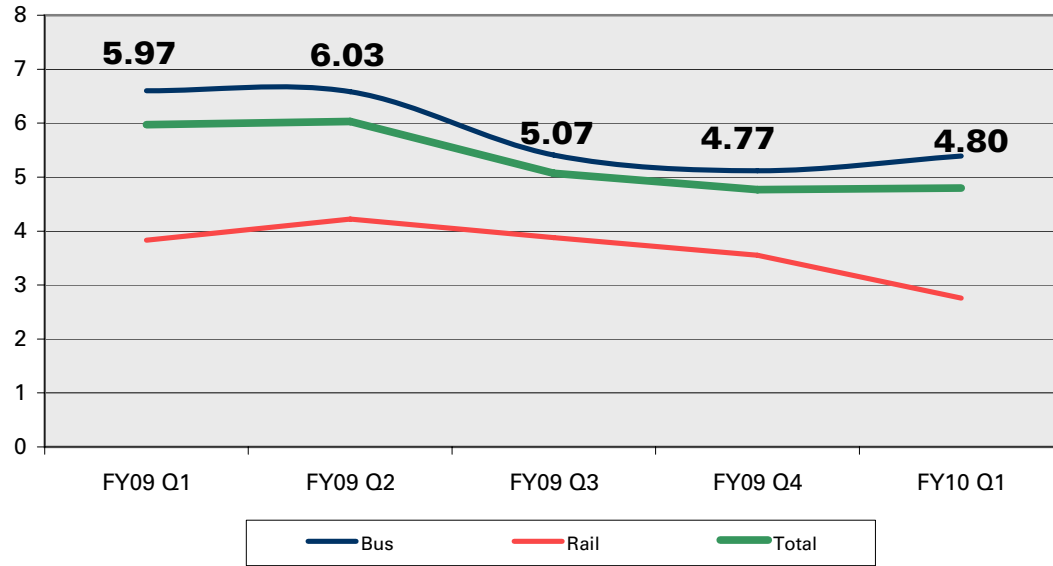
**Annual - FY09**

New Customer Service Training

Due to budgetary constraints, the proposed customer service training program was not implemented during FY09 as planned.

Reporting Period	% of Operators
FY09	
Notes	

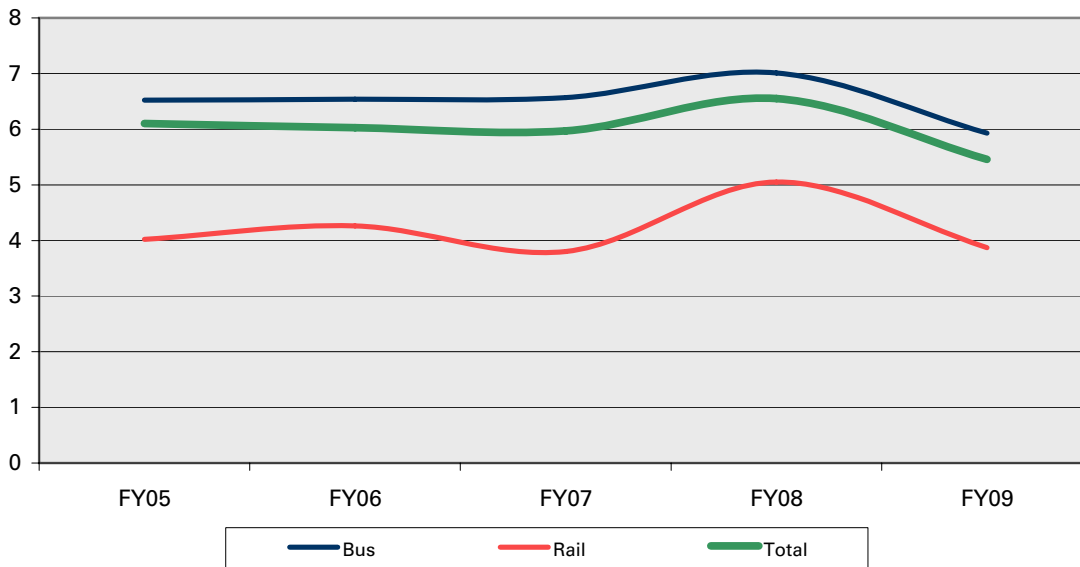
**Quarterly - FY10 Q1** Goals vary, see below **Collisions per 100,000 Miles**



Reporting Period	Bus	Rail	Total
FY09 Q1	6.60	3.83	5.97
FY09 Q2	6.58	4.22	6.03
FY09 Q3	5.41	3.88	5.07
FY09 Q4	5.12	3.55	4.77
FY10 Q1	5.39	2.76	4.80
FY10 Goal	6.15	4.50	5.90

**Notes**  
 On a quarter-over-quarter basis bus collisions increased from 271 to 287 and rail collisions decreased from 53 to 42.

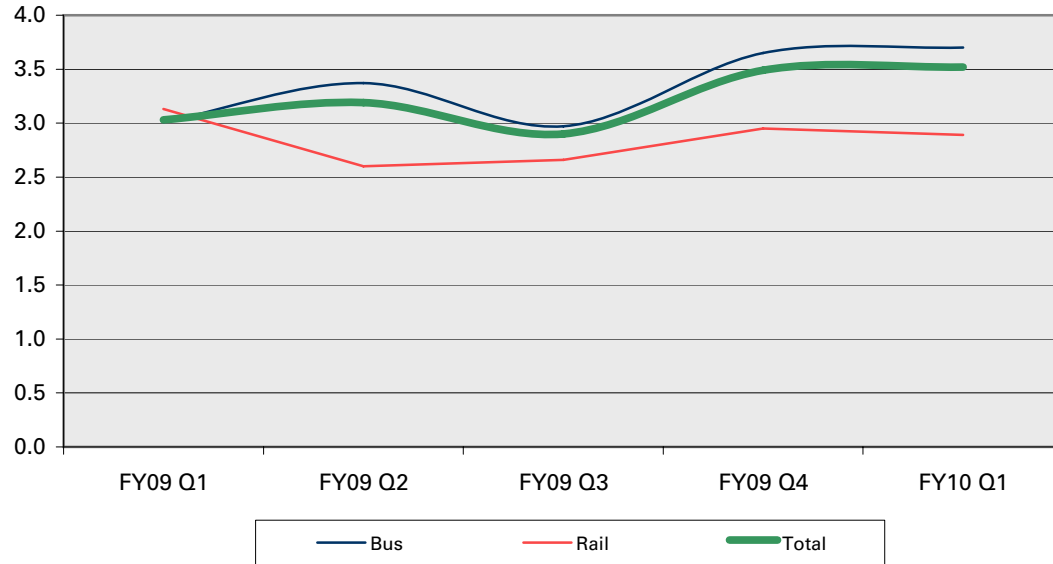
**Annual - FY09** Goals vary, see below **Collisions per 100,000 Miles**



Reporting Period	Bus	Rail	Total
FY05	6.52	4.02	6.10
FY06	6.54	4.26	6.03
FY07	6.57	3.80	5.97
FY08	7.01	5.05	6.55
FY09	5.93	3.87	5.46
FY09 Goal	6.47	4.74	6.21

**Notes**  
 On a fiscal year over fiscal year basis, bus collisions decreased from 1,448 to 1,224 and rail collisions decreased from 322 to 235.

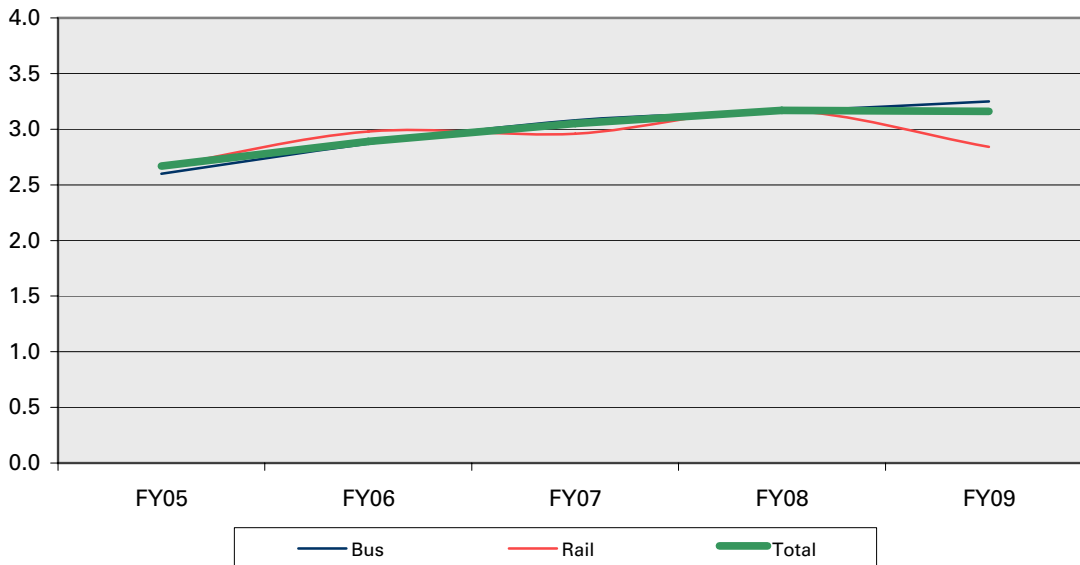
**Quarterly - FY10 Q1** **Goals vary, see below** **Falls on Board** per 100,000 Miles



Reporting Period	Bus	Rail	Total
FY09 Q1	3.01	3.13	3.03
FY09 Q2	3.37	2.60	3.19
FY09 Q3	2.97	2.66	2.90
FY09 Q4	3.65	2.95	3.49
FY10 Q1	3.70	2.89	3.52
FY10 Goal	2.90	2.46	3.01

**Notes**  
 On a quarter-over-quarter basis bus falls on board increased from 193 to 197 and rail falls on board held steady at 44.

**Annual - FY09** **Goals vary, see below** **Falls on Board** Per 100,000 Miles

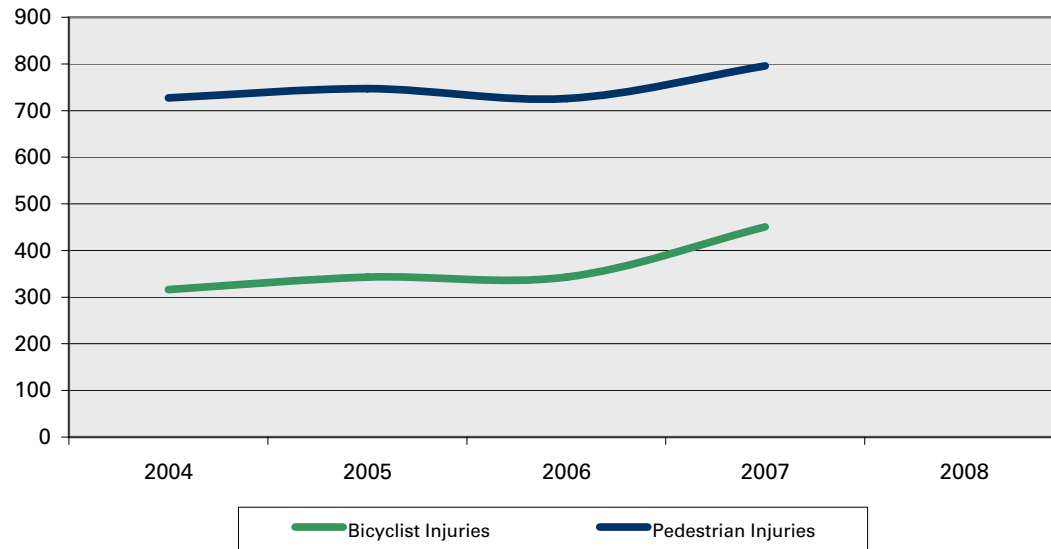


Reporting Period	Bus	Rail	Total
FY05	2.60	2.66	2.67
FY06	2.87	2.98	2.89
FY07	3.08	2.96	3.05
FY08	3.16	3.17	3.17
FY09	3.25	2.84	3.16
FY09 Goal	2.90	2.46	3.01

**Notes**  
 On a fiscal year over fiscal year basis, bus falls on board increased from 654 to 671 and rail falls on board decreased from 202 to 172.

Annual - 2007

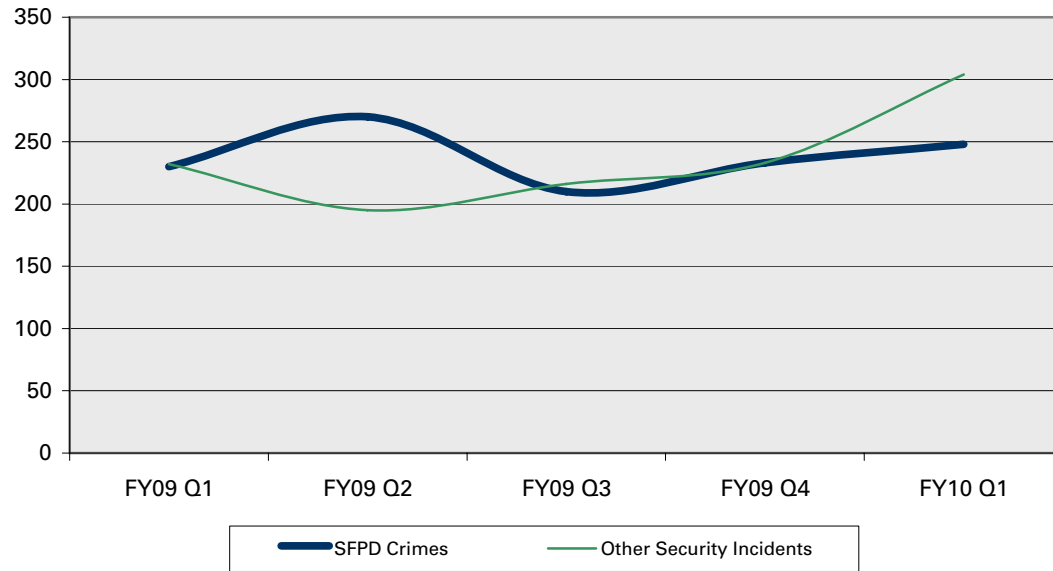
Vehicle Collisions Involving Bicyclists and Pedestrians



Reporting Period	Bicyclist Injuries	Bicyclist Fatalities	Pedestrian Injuries	Pedestrian Fatalities
2004	316	1	727	20
2005	343	2	747	14
2006	343	2	726	15
2007	451	1	796	24
2008				

**Notes**  
*To clarify, the above numbers are provided for informational purposes, and reflect all vehicle collisions within the City and County of San Francisco, not Muni-specific collisions. Awaiting results of 2008 report.*

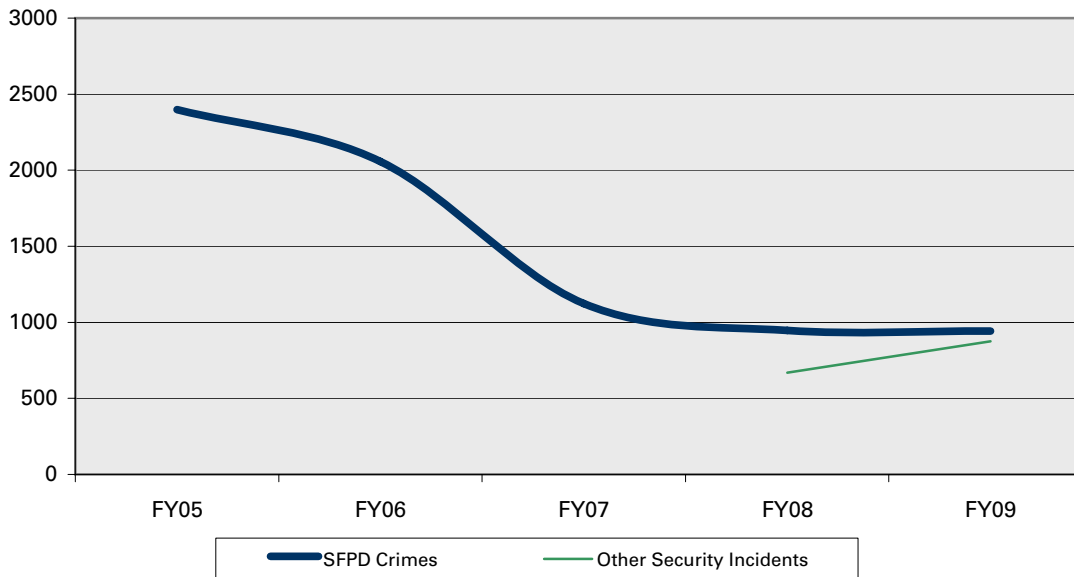
**Quarterly - FY10 Q1**      **Goal: < 225**    **Goal achieved?** ■    **Trend?** ■      Security Incidents



Reporting Period	SFPD Crimes	Fare Evasions	Other Security Incidents
FY09 Q1	230	see C7	232
FY09 Q2	270		195
FY09 Q3	210		216
FY09 Q4	233		233
FY10 Q1	248		304
<i>FY10 Goal</i>	225 per quarter		

**Notes**  
 FY10 Annual Goal is <900 crimes. Detailed results related to security incidents can be found in the appendix.

**Annual - FY09**      **Goal: <1,076**    **Goal achieved?** ■    **Trend?** ■      Security Incidents



Reporting Period	SFPD Crimes	Fare Evasions	Other Security Incidents
FY05	2,399	see C7	
FY06	2,058		
FY07	1,123		
FY08	947		670
FY09	943		876
<i>FY09 Goal</i>	900		n/a

**Notes**  
 Detailed results related to security incidents can be found in the appendix. During FY09, 0.417 crimes were reported per 100,000 passengers (based on unaudited ridership figures).  
 C5 in FY08.

**Quarterly - FY10 Q2** Proof-of-Payment Program

A tracking system for the proof-of-payment program has been established.

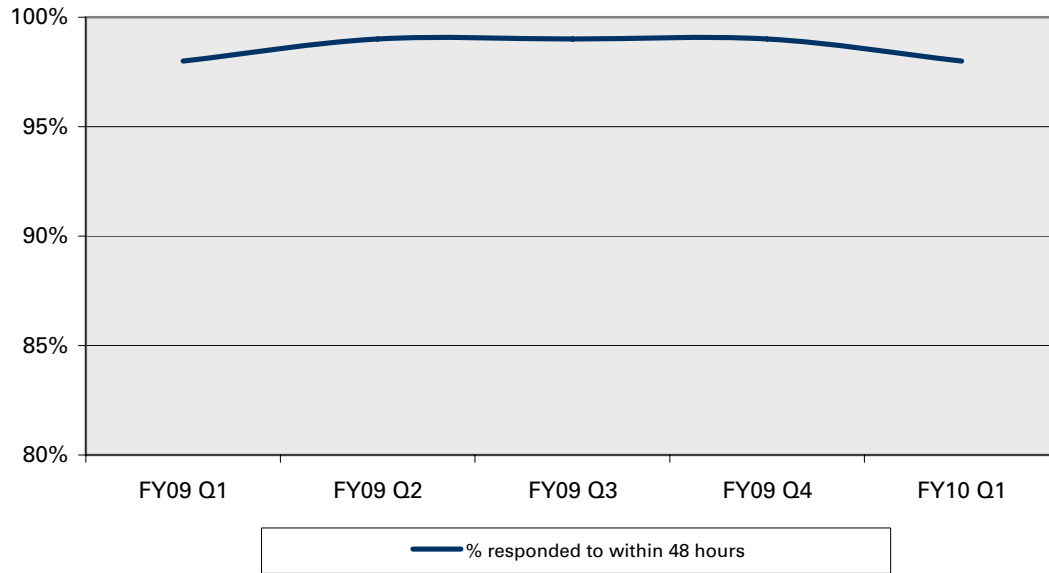
The first set of inspection, citation and warning rate results will be available in FY10 Q2.

Reporting Period	Fare Evasion Citations	Inspection Rate	Citation Rate	Warning Rate
FY09 Q1	10,055			
FY09 Q2	9,952			
FY09 Q3	10,757			
FY09 Q4	8,513			
FY10 Q1	9,162			
<i>FY10 Goal</i>				
<b>Notes</b>				
<i>Baselines for inspection, citation and warning rates will be established at the end of FY10.</i>				

**Annual - FY10** Proof-of-Payment Program

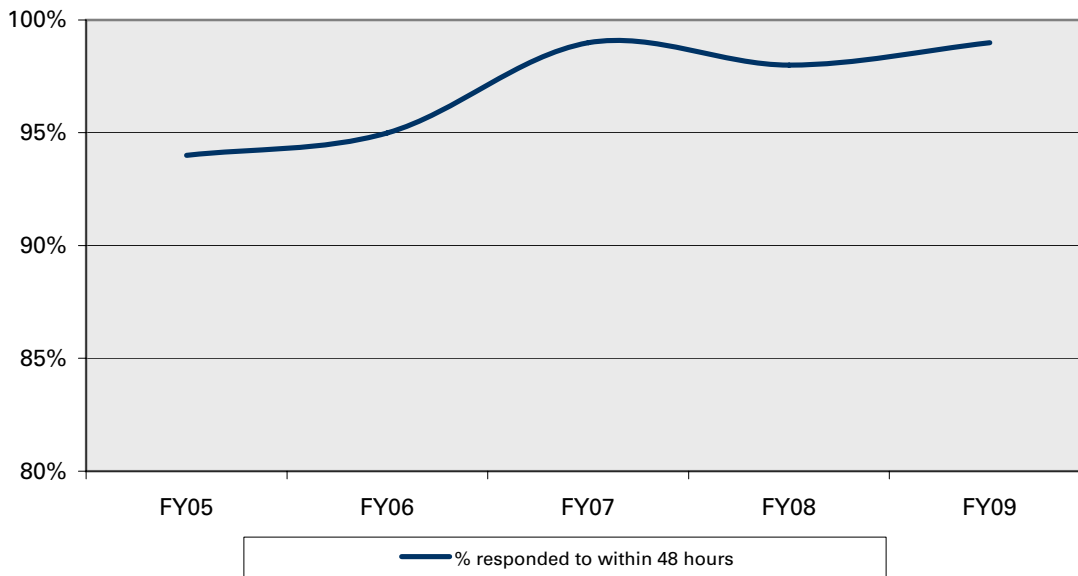
Reporting Period	Fare Evasion Citations	Inspection Rate	Citation Rate	Warning Rate
FY05	7,347			
FY06	9,017			
FY07	15,634			
FY08	26,737			
FY09	39,277			
<b>Notes</b>				
<i>Baselines for inspection, citation and warning rates will be established at the end of FY10.</i>				

**Quarterly - FY10 Q1**      **Goal: >100%**   **Goal achieved?** ■   **Trend?** ■      Abandoned Automobile Reports



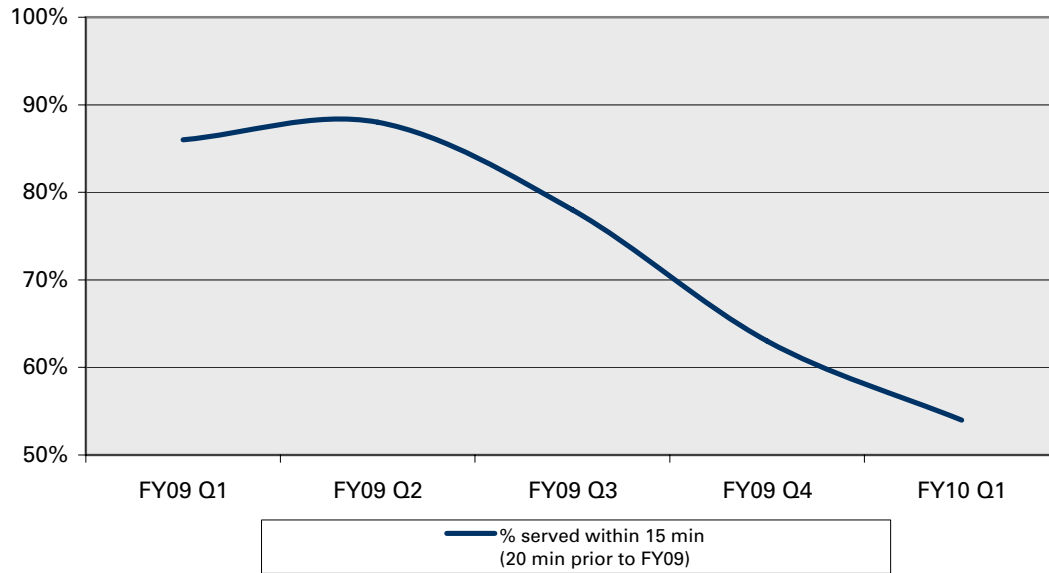
Reporting Period	% responded to within 48 hours
FY09 Q1	98%
FY09 Q2	99%
FY09 Q3	99%
FY09 Q4	99%
FY10 Q1	98%
<i>FY10 Goal</i>	<i>100%</i>
<b>Notes</b>	
<i>2,394 of 2,431 reports were responded to within 48 hours.</i>	

**Annual - FY09**      **Goal: >100%**   **Goal achieved?** ■   **Trend?** ■      Abandoned Automobile Reports



Reporting Period	% responded to within 48 hours
FY05	94%
FY06	95%
FY07	99%
FY08	98%
FY09	99%
<i>FY09 Goal</i>	<i>100%</i>
<b>Notes</b>	
<i>C7 in FY09.</i>	

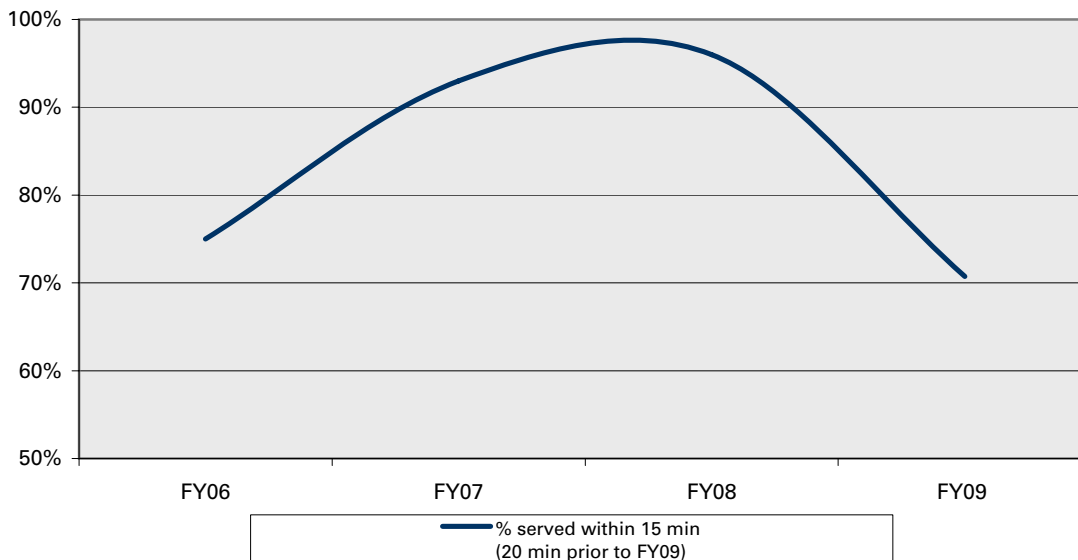
**Quarterly - FY10 Q1**      **Goal: >82%**    **Goal achieved?** ■    **Trend?** ■      Walk-in Citation and Res. Parking Permit Customers



Reporting Period	% served within 15 min (20 min prior to FY09)
FY09 Q1	86%
FY09 Q2	88%
FY09 Q3	78%
FY09 Q4	63%
FY10 Q1	54%
<i>FY10 Goal</i>	82%

**Notes**  
 24,037 of 44,397 customers were served within 15 minutes. Volume in the facility continues to increase.

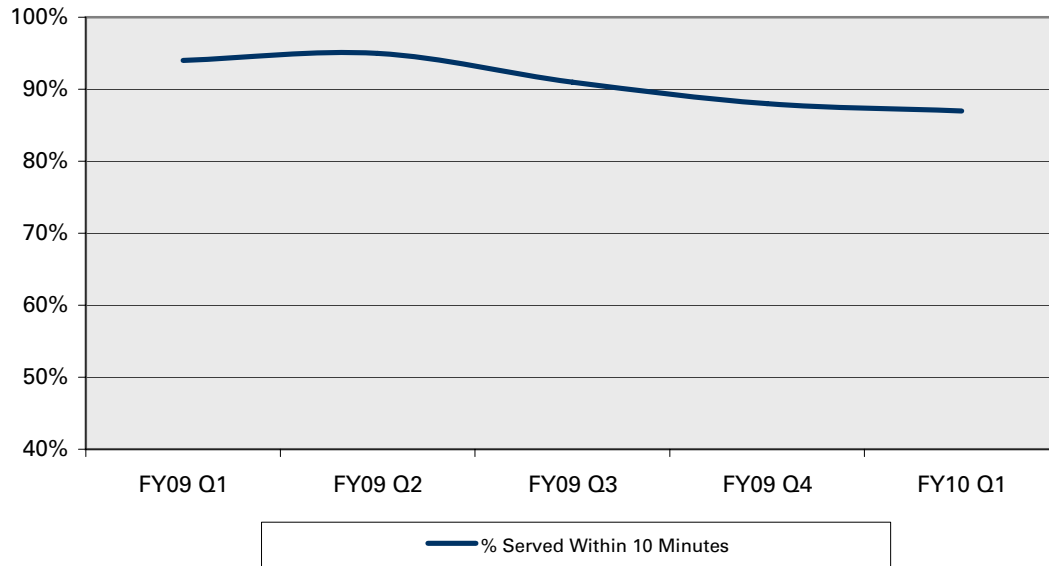
**Annual - FY09**      **Goal: >82%**    **Goal achieved?** ■    **Trend?** ■      Walk-in Citation and Res. Parking Permit Customers



Reporting Period	% served within 15 min (20 min prior to FY09)
FY06	75%
FY07	93%
FY08	96%
FY09	71%
<i>FY09 Goal</i>	82%

**Notes**  
 Trend indicator not provided due to change in standard.  
 C7 in FY08 and C8 in FY09.  
 RPP: Residential Parking Permit

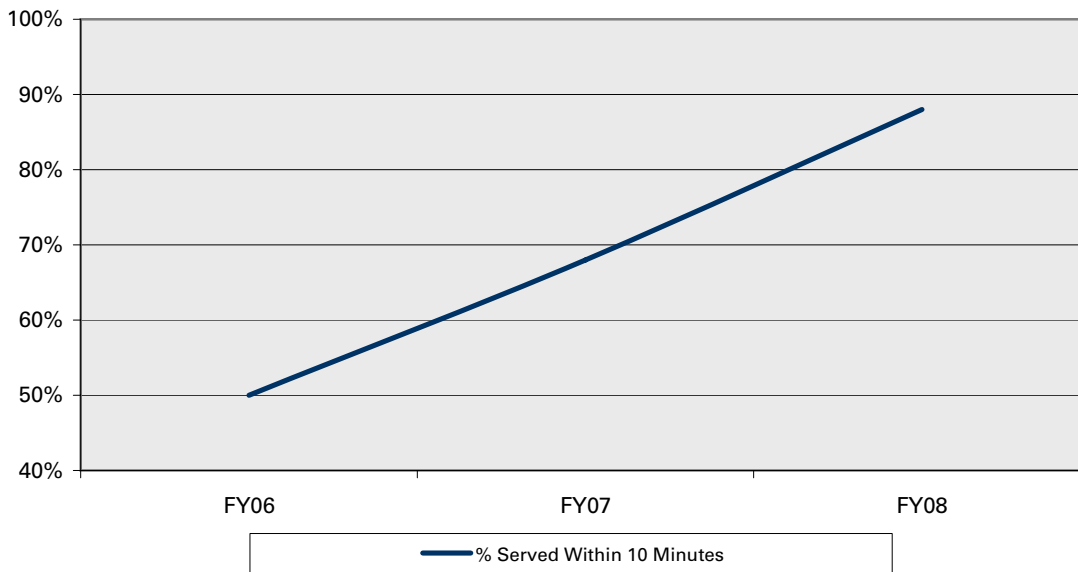
**Quarterly - FY10 Q1**      **Goal: >82%**    **Goal achieved?** ■    **Trend?** ■      Administrative Citation Hearing Customers



Reporting Period	% Served Within 10 Minutes
FY09 Q1	94%
FY09 Q2	95%
FY09 Q3	91%
FY09 Q4	88%
FY10 Q1	87%
<i>FY10 Goal</i>	82%

**Notes**  
 1,053 of 1,223 customers were served within 10 minutes.

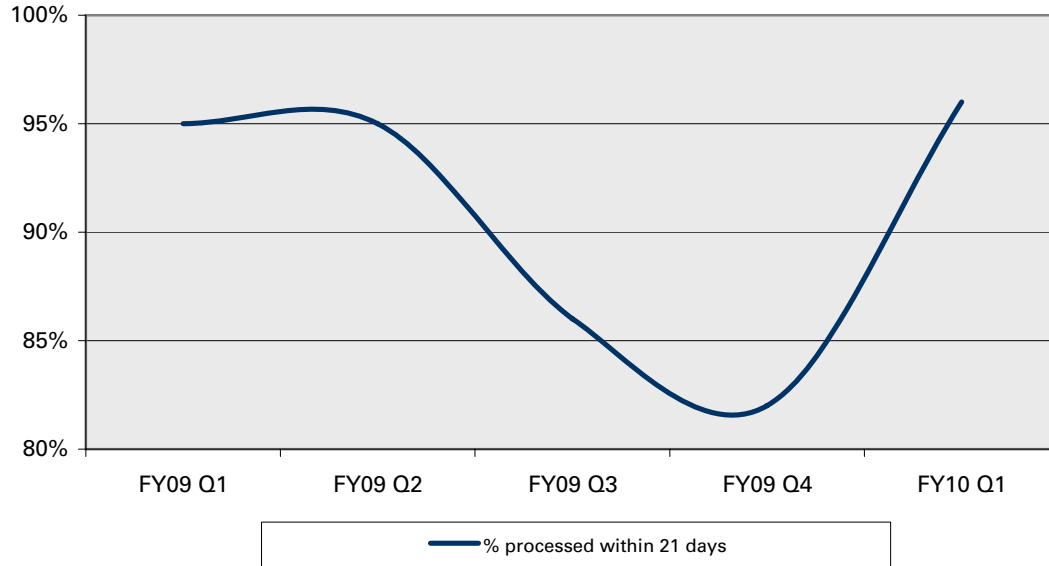
**Annual - FY09**      **Goal: >80%**    **Goal achieved?** ■    **Trend?** ■      Administrative Citation Hearing Customers



Reporting Period	% Served Within 10 Minutes
FY06	50%
FY07	68%
FY08	88%
FY09	90%
<i>FY09 Goal</i>	82%

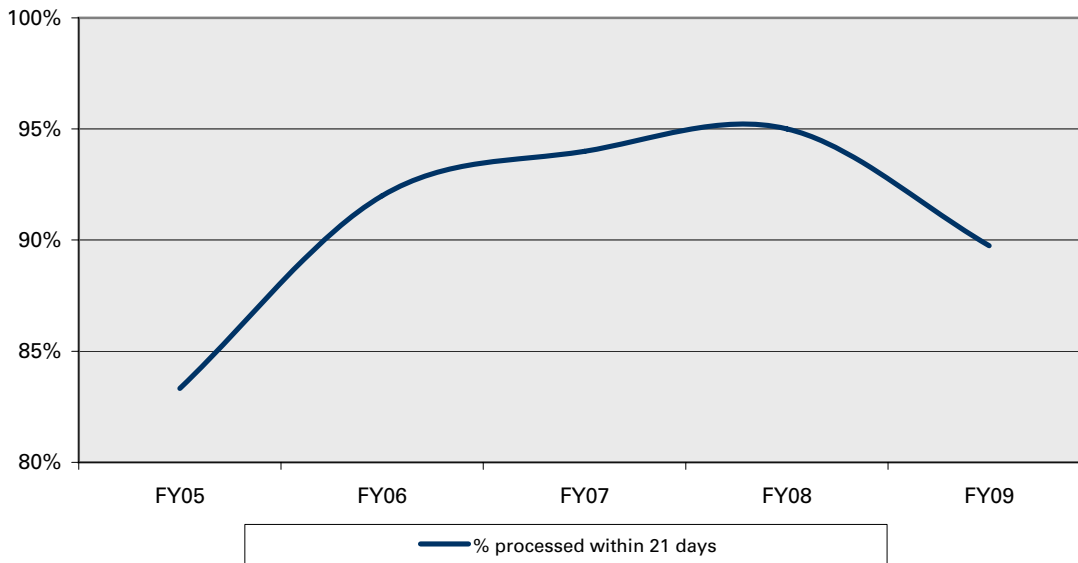
**Notes**  
 C8 in FY08 and C9 in FY09. Goal changed from 80% to 82% in FY09.

**Quarterly - FY10 Q1**      **Goal: >95%**    **Goal achieved?**     **Trend?**       Residential Parking Permit Renewals



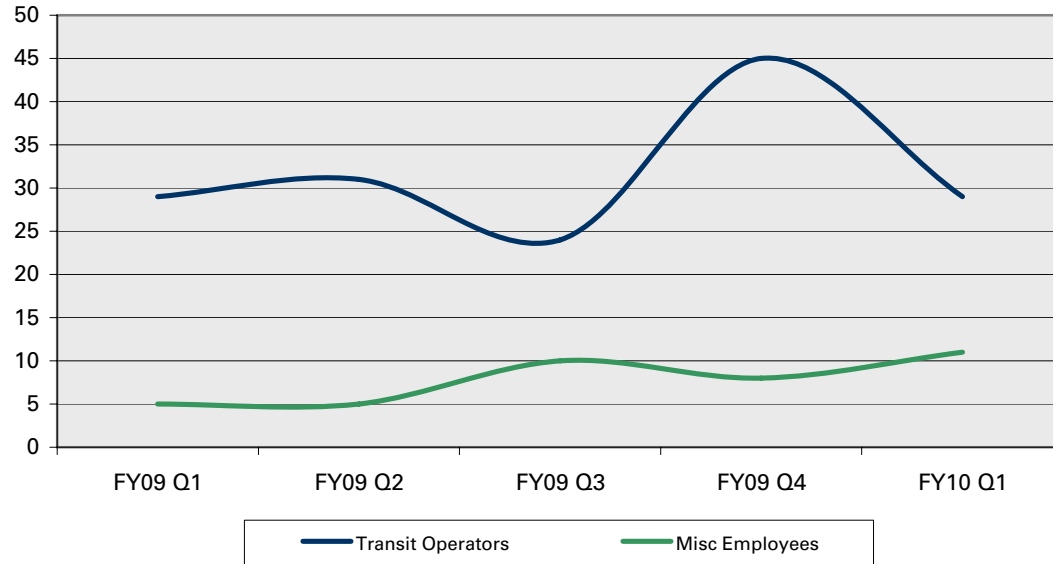
Reporting Period	% processed within 21 days
FY09 Q1	95%
FY09 Q2	95%
FY09 Q3	86%
FY09 Q4	82%
FY10 Q1	96%
<i>FY10 Goal</i>	<i>95%</i>
<b>Notes</b>	
<i>15,507 of 16,187 renewals were processed within 21 days.</i>	

**Annual - FY09**      **Goal: >95%**    **Goal achieved?**     **Trend?**       Residential Parking Permit Renewals



Reporting Period	% processed within 21 days
FY05	83%
FY06	92%
FY07	94%
FY08	95%
FY09	90%
<i>FY09 Goal</i>	<i>95%</i>
<b>Notes</b>	
<i>C9 in FY08 and C10 in FY09.</i>	

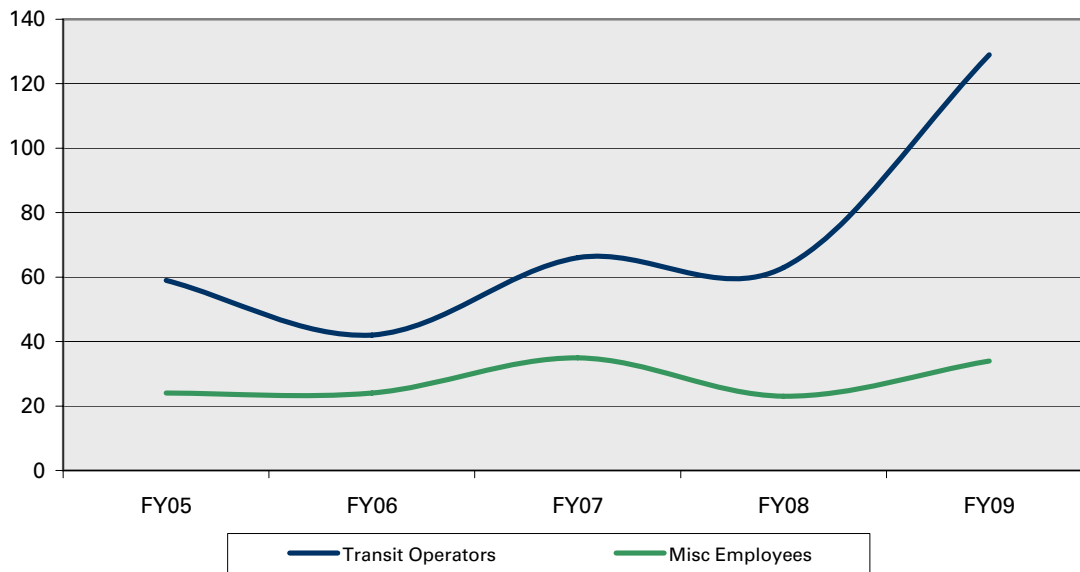
**Quarterly - FY10 Q1** Grievances Filed



Reporting Period	Transit Operators	Misc Employees
FY09 Q1	29	5
FY09 Q2	31	5
FY09 Q3	24	10
FY09 Q4	45	8
FY10 Q1	29	11

**Notes**

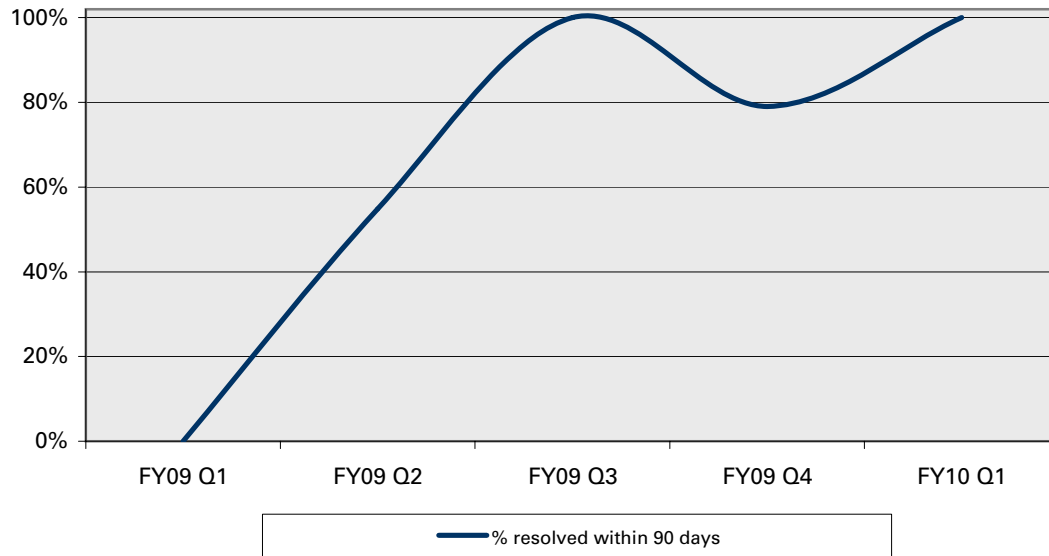
**Annual - FY09** Grievances Filed



Reporting Period	Transit Operators	Misc Employees
FY05	59	24
FY06	42	24
FY07	66	35
FY08	63	23
FY09	129	34

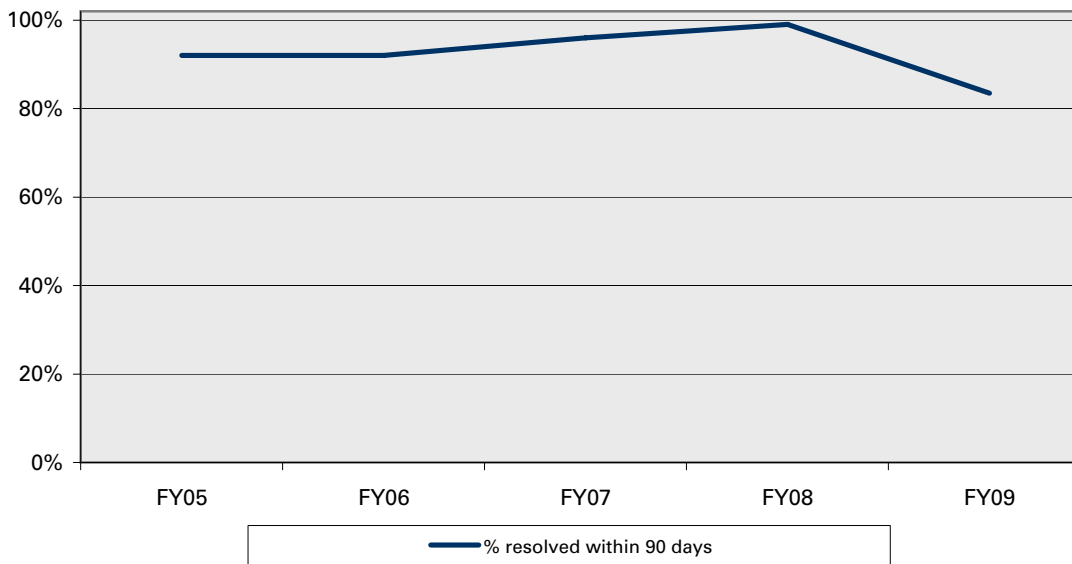
**Notes**  
*Approximately 6.3% of transit operators filed grievances during FY09.*

**Quarterly - FY10 Q1**      **Goal: >90%**    **Goal achieved?**     **Trend?**       Transit Operator Grievance Resolution Rate



Reporting Period	% resolved within 90 days
FY09 Q1	0%
FY09 Q2	55%
FY09 Q3	100%
FY09 Q4	79%
FY10 Q1	100%
<i>FY10 Goal</i>	<i>90%</i>
<b>Notes</b>	

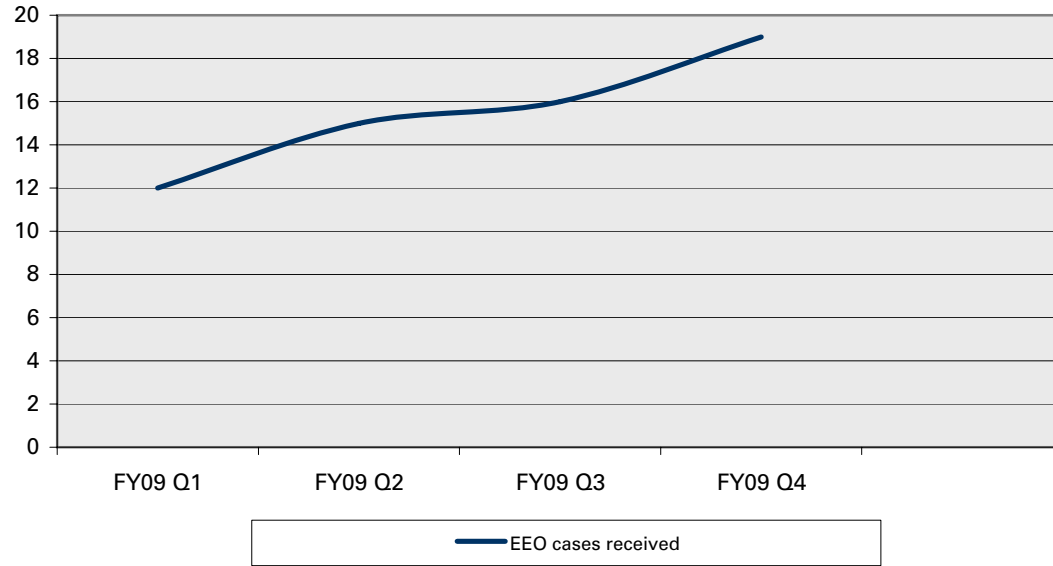
**Annual - FY09**      **Goal: >90%**    **Goal achieved?**     **Trend?**       Transit Operator Grievance Resolution Rate



Reporting Period	% resolved within 90 days
FY05	92%
FY06	92%
FY07	96%
FY08	99%
FY09	83%
<i>FY09 Goal</i>	<i>90%</i>
<b>Notes</b>	
<i>FY04-FY06 Goal: 75% in 30 days</i>	
<i>FY07 Goal: 75% in 45 days</i>	
<i>FY08 Goal: 90% in 90 days</i>	

**Quarterly - FY10 Q1**

Equal Employment Opportunity Cases Received

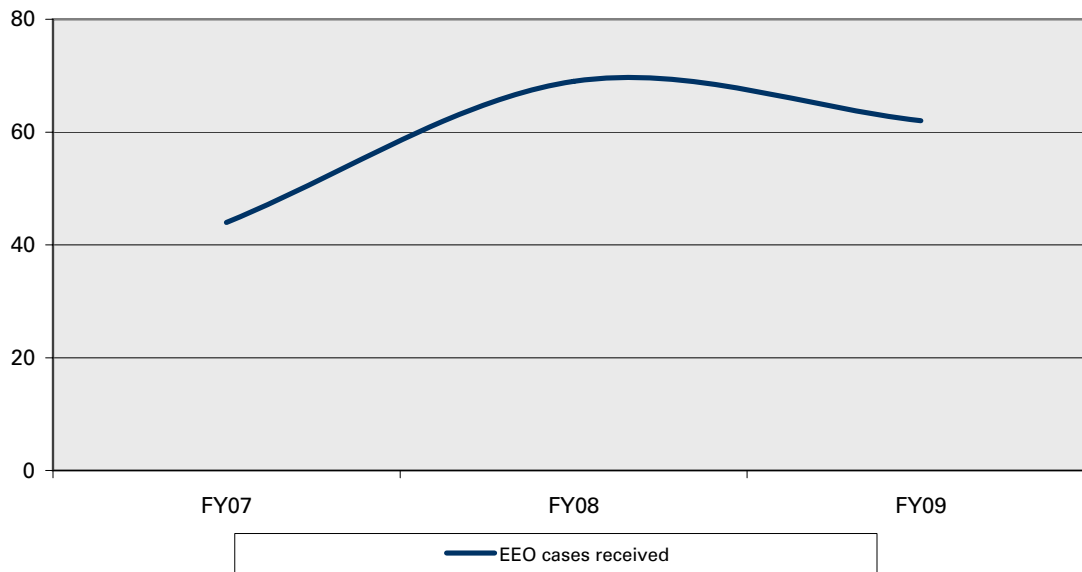


Reporting Period	EEO cases received
FY09 Q1	12
FY09 Q2	15
FY09 Q3	16
FY09 Q4	19

**Notes**  
*Results are reported on an annual basis.*

**Annual - FY09**

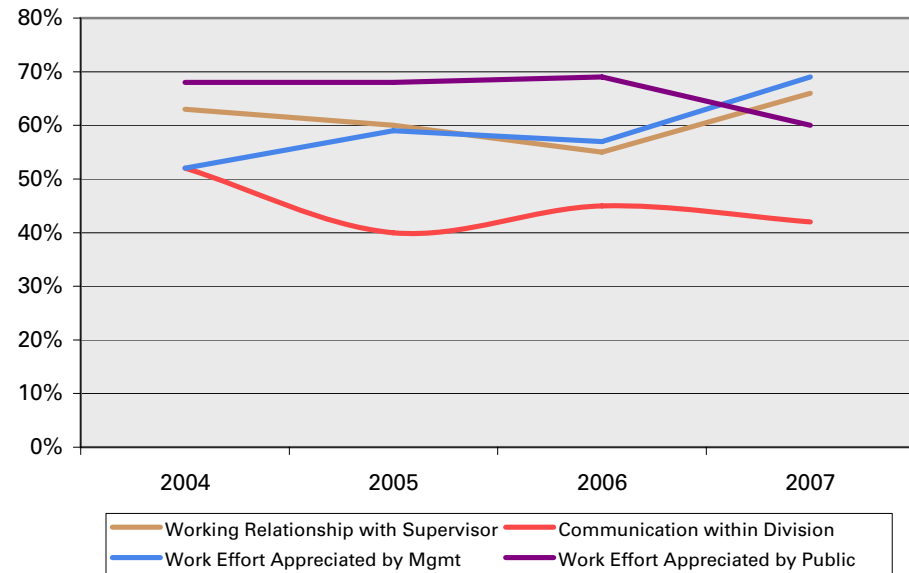
Equal Employment Opportunity Cases Received



Reporting Period	EEO cases received
FY07	44
FY08	69
FY09	62

**Notes**

**Annual - 2007** | **Goal: year over year improvement** | % of Employees Rating "Excellent" or "Good"



Reporting Period	Working Relationship with Supervisor	Communication within Division	Work Effort Appreciated by Mgmt	Work Effort Appreciated by Public
2004	63%	52%	52%	68%
2005	60%	40%	59%	68%
2006	55%	45%	57%	69%
2007	66%	42%	69%	60%

**Notes**  
*D3 in FY08. The 2009 employee survey is currently underway.*

PSR Category/Type	FY09 Q3	FY09 Q4	FY10 Q1	FY10 Q2
<b>100 EMPLOYEE CONDUCT - UNSAFE OPERATION</b>				
101 Running Red Light/Stop Sign	110	126	121	
102 Speeding	79	83	74	
103 Allegedly Under Influence of Drugs/Alcohol	19	8	7	
104 Using Mobile Phone or Radio	54	51	47	
105 Eating/Drinking/Smoking	18	31	18	
106 Collision	51	40	44	
107 Fall Boarding/On Board/Alighting - Injury	78	111	90	
108 General Careless Operation	292	364	395	
<b>Subtotal</b>	<b>701</b>	<b>814</b>	<b>796</b>	
<b>200 EMPLOYEE CONDUCT - INATTENTIVENESS / NEGLIGENCE</b>				
201 Pass Up/Did Not Wait for Transferee	1,365	1,276	1,420	
202 Ignored Stop Request	125	115	126	
203 No En Route Announcements	44	56	36	
204 Inadequate Delay Announcements	28	13	23	
205 Offroute/Did Not Complete Route	109	107	112	
206 Not Adhering to Schedule	226	145	157	
207 Refused to Kneel Bus/Lower Steps	32	53	85	
208 Did Not Ask Priority Seats to be Vacated	21	13	20	
209 Did Not Pull to Curb	23	24	45	
210 Refused to Accommodate Service Animal	6	6	13	
211 Unauthorized Stop/Delay	58	51	59	
212 Did Not Enforce Rules/Contact Authorities	80	100	108	
213 General Distraction from Duty	132	198	205	
<b>Subtotal</b>	<b>2,249</b>	<b>2,157</b>	<b>2,409</b>	

PSR Category/Type	FY09 Q3	FY09 Q4	FY10 Q1	FY10 Q2
<b>300 EMPLOYEE CONDUCT - DISCOURTEOUS/INSENSITIVE/INAPPROPRIATE CONDUCT</b>				
301 Discourtesy to Customer	805	707	751	
302 Altercation: Employee/Customer	40	44	40	
303 Fare/Transfer/POP Dispute	158	164	227	
304 Mishandling Funds/Transfers	4	7	8	
305 Refused Vehicle As Terminal Shelter	6	12	7	
306 General Unprofessional Conduct/Appearance	192	133	145	
<b>Subtotal</b>	<b>1,205</b>	<b>1,067</b>	<b>1,178</b>	
<b>400 EMPLOYEE CONDUCT - COMMENDATION</b>				
401 Employee Commendation	457	298	519	
<b>Subtotal</b>	<b>457</b>	<b>298</b>	<b>519</b>	
<b>500 PRODUCTS/SERVICES - CRIMINAL ACTIVITY</b>				
501 Altercation: Miscellaneous	18	41	35	
502 Larceny/Theft	27	35	51	
503 Fare Evasion/Transfer Abuse	21	26	38	
504 Disorderly Conduct/Disturbance	42	46	34	
<b>Subtotal</b>	<b>108</b>	<b>148</b>	<b>158</b>	

PSR Category/Type	FY09 Q3	FY09 Q4	FY10 Q1	FY10 Q2
<b>600 PRODUCTS/SERVICES - SERVICE DELIVERY/FACILITIES</b>				
601 Delay/No-Show	760	581	792	
602 Bunching	35	35	32	
603 Switchback	13	31	21	
604 Vehicle Appearance	45	48	36	
605 Vehicle Maintenance/Noise	201	202	157	
606 Wheelchair Lift/Securement/Bike Rack Defective	13	13	14	
607 Track/ATCS Maintenance	25	40	39	
608 Station/Stop Appearance/Maintenance	94	152	131	
609 Elevator/Escalator Maintenance	10	8	2	
610 Fare Collection Equipment	47	46	44	
611 Signs, Maps, and Auto-Announcements	97	95	62	
<b>Subtotal</b>	<b>1,340</b>	<b>1,251</b>	<b>1,330</b>	
<b>700 PRODUCTS/SERVICES - SERVICE PLANNING</b>				
701 Insufficient Frequency	265	173	116	
702 Lines/Routes: Current and Proposed	58	179	55	
703 Stop Changes	33	17	17	
704 Shelter Requests	17	23	17	
<b>Subtotal</b>	<b>373</b>	<b>392</b>	<b>205</b>	
<b>800 PRODUCTS/SERVICES - MISCELLANEOUS</b>				
801 NextMuni/Technology	319	283	18	
802 Advertising/Marketing	53	22	249	
803 Personal Property Damage	20	7	18	
804 Fare Media Issues	76	39	7	
805 System Commendation	12	15	79	
<b>Subtotal</b>	<b>480</b>	<b>366</b>	<b>371</b>	
<b>UNCLASSIFIABLE</b>	0	0	0	
<b>GRAND TOTAL</b>	<b>6,913</b>	<b>6,493</b>	<b>6,966</b>	

Line/Route <i>High frequency lines/routes (headways of 10 min or less during AM/PM peaks) are shown in italics</i>	Mode	FY05	FY06	FY07	FY08	FY09	Five Year Avg	Cust Observed Schedule Adherence FY10 Q1	Headway Adherence FY10 Q1	% of AM Peak Trips >125% LF FY10 Q1	% of PM Peak Trips >125% LF FY10 Q1
<i>1 California</i>	TC	76.3%	81.6%	83.2%	84.9%	86.2%	82.4%				
<i>1AX California 'A' Exp</i>	MC	57.8%	60.8%	54.2%	75.3%	64.3%	62.5%				
<i>1BX California 'B' Exp</i>	MC	86.3%	69.7%	78.0%	74.9%	84.4%	78.6%				
<i>2 Clement</i>	MC	69.1%	65.5%	71.0%	64.4%	72.2%	68.4%				
<i>3 Jackson</i>	TC	67.6%	71.6%	76.1%	71.8%	78.1%	73.0%				
<i>4 Sutter</i>	TC	69.2%	80.0%	81.0%	80.9%	85.5%	79.3%				
<i>5 Fulton</i>	TC	73.1%	70.5%	76.1%	77.2%	79.4%	75.3%				
<i>6 Parnassus</i>	TC	69.7%	75.4%	79.3%	75.8%	79.7%	76.0%	75.9%	62.3%	0.0%	0.0%
<i>7 Haight</i>	TC	77.7%	72.4%	58.8%	58.8%	70.2%	67.6%				
<i>9 San Bruno</i>	MC	74.3%	70.8%	68.3%	67.7%	73.9%	71.0%				
<i>9AX San Bruno 'A' Exp</i>	MC	53.1%	48.3%	63.5%	60.9%	56.8%	56.5%				
<i>9BX San Bruno 'B' Exp</i>	MC	67.6%	66.3%	74.8%	59.7%	63.8%	66.4%				
<i>9X San Bruno Exp</i>	MC	64.1%	59.1%	65.0%	56.1%	61.6%	61.2%				
<i>10 Townsend</i>	MC	61.9%	65.9%	73.5%	65.6%	74.5%	68.3%	69.3%	62.3%	0.0%	0.0%
<i>12 Folsom</i>	MC	67.6%	67.3%	66.3%	59.8%	73.8%	66.9%	76.9%	71.6%	0.0%	5.0%
<i>14 Mission</i>	TC	71.5%	75.1%	71.2%	77.5%	77.6%	74.6%				
<i>14L Mission Limited</i>	MC	83.0%	65.9%	73.7%	73.5%	71.6%	73.5%	85.2%	83.3%	0.0%	0.0%
<i>14X Mission Exp</i>	MC	88.3%	78.3%	74.8%	75.3%	70.5%	77.4%				
<i>16AX Noriega 'A' Exp</i>	MC	69.6%	63.1%	76.6%	68.5%	72.0%	69.9%	91.3%	85.7%	0.0%	0.0%
<i>16BX Noriega 'B' Exp</i>	MC	62.6%	74.5%	74.4%	55.2%	75.2%	68.3%				
<i>17 Parkmerced</i>	MC	54.6%	64.9%	68.2%	65.9%	60.1%	62.7%				
<i>18 46th Av</i>	MC	78.3%	75.8%	78.0%	83.8%	80.4%	79.2%				
<i>19 Polk</i>	MC	61.2%	64.3%	63.2%	67.5%	68.5%	64.9%				
<i>20 Columbus</i>	TC				79.0%	95.7%	NA				
<i>21 Hayes</i>	TC	65.2%	62.0%	71.2%	71.9%	73.3%	68.7%				
<i>22 Fillmore</i>	TC	72.7%	68.0%	69.8%	72.9%	77.7%	72.2%				
<i>23 Monterey</i>	MC	77.6%	73.4%	61.0%	74.6%	66.1%	70.5%	65.8%	74.4%	0.0%	0.0%

Line/Route <i>High frequency lines/routes (headways of 10 min or less during AM/PM peaks) are shown in italics</i>	Mode	FY05	FY06	FY07	FY08	FY09	Five Year Avg	Cust Observed Schedule Adherence FY10 Q1	Headway Adherence FY10 Q1	% of AM Peak Trips >125% LF FY10 Q1	% of PM Peak Trips >125% LF FY10 Q1
<i>24 Divisadero</i>	TC	73.1%	71.9%	69.1%	72.5%	72.0%	71.7%	74.8%	64.5%	8.0%	4.3%
26 Valencia	MC	77.1%	66.8%	58.0%	59.5%	69.3%	66.1%				
27 Bryant	MC	68.4%	73.3%	70.1%	72.0%	76.6%	72.1%	71.4%	61.1%	0.0%	9.1%
28 19th Av	MC	65.1%	68.4%	57.1%	61.4%	64.7%	63.3%	66.4%	61.6%	0.0%	10.7%
28L 19th Av Limited	MC	80.7%	65.1%	69.4%	88.4%	79.6%	76.6%	91.1%	94.9%	0.0%	0.0%
29 Sunset	MC	59.8%	59.0%	58.7%	68.4%	67.4%	62.6%				
<i>30 Stockton</i>	TC	74.0%	75.7%	75.6%	73.6%	81.3%	76.0%	77.1%	42.0%	2.7%	14.3%
<i>30X Marina Exp</i>	MC	78.7%	71.3%	74.8%	78.7%	74.7%	75.6%	82.6%	57.7%	20.0%	4.0%
<i>31 Balboa</i>	TC	69.7%	70.6%	66.1%	71.2%	72.2%	69.9%	71.7%	63.3%	3.0%	3.0%
<i>31AX Balboa 'A' Exp</i>	MC	68.4%	68.2%	70.3%	71.9%	77.0%	71.1%	81.0%	60.5%	10.0%	0.0%
<i>31BX Balboa 'B' Exp</i>	MC	63.3%	78.0%	70.0%	69.2%	64.2%	68.9%	76.2%	68.4%	0.0%	0.0%
33 Stanyan	TC	63.9%	66.2%	66.8%	64.8%	68.0%	65.9%	65.5%	75.3%	0.0%	0.0%
35 Eureka	MC	71.2%	70.4%	78.9%	60.9%	85.9%	73.4%	74.3%	95.9%	0.0%	0.0%
36 Teresita	MC	62.2%	60.5%	60.6%	60.2%	62.3%	61.1%				
37 Corbett	MC	84.1%	71.7%	75.6%	67.2%	80.5%	75.8%				
38 Geary	MC	72.5%	71.4%	75.1%	72.7%	76.6%	73.6%	78.1%	46.0%	0.0%	2.7%
<i>38AX Geary 'A' Exp</i>	MC	65.5%	85.0%	67.4%	78.2%	71.6%	73.5%				
<i>38BX Geary 'B' Exp</i>	MC	78.3%	70.9%	68.0%	65.5%	83.9%	73.3%	72.1%	71.4%	2.6%	0.0%
<i>38L Geary Limited</i>	MC	77.1%	59.6%	73.8%	74.4%	74.8%	71.9%	77.9%	59.1%	5.6%	18.2%
39 Coit	MC	62.8%	57.4%	37.6%	57.3%	60.8%	55.2%	57.7%	94.8%	0.0%	0.0%
<i>41 Union</i>	TC	86.5%	78.6%	74.9%	76.8%	76.0%	78.5%				
<i>43 Masonic</i>	MC	75.6%	67.5%	63.5%	69.4%	77.5%	70.7%	80.1%	70.8%	4.3%	0.0%
44 O'Shaughnessy	MC	69.0%	69.1%	70.4%	66.0%	63.4%	67.5%				
<i>45 Union-Stockton</i>	TC	68.3%	65.5%	71.5%	67.6%	75.4%	69.6%	75.7%	69.0%	12.0%	8.1%
<i>47 Van Ness</i>	MC	58.4%	74.9%	73.4%	76.9%	76.6%	72.0%	75.4%	57.7%	4.0%	3.9%
48 Quintara-24th St	MC	68.1%	61.7%	72.8%	62.2%	71.5%	67.3%	68.2%	70.5%	0.0%	10.3%
<i>49 Van Ness-Mission</i>	TC	74.3%	62.9%	73.0%	68.6%	75.7%	70.9%				

Line/Route <i>High frequency lines/routes (headways of 10 min or less during AM/PM peaks) are shown in italics</i>	Mode	FY05	FY06	FY07	FY08	FY09	Five Year Avg	Cust Observed Schedule Adherence FY10 Q1	Headway Adherence FY10 Q1	% of AM Peak Trips >125% LF FY10 Q1	% of PM Peak Trips >125% LF FY10 Q1
52 Excelsior	MC	68.5%	60.0%	83.9%	48.8%	67.8%	65.8%				
53 Southern Heights	MC	84.7%	78.6%	78.1%	81.0%	71.6%	78.8%				
54 Felton	MC	59.7%	52.3%	45.3%	45.4%	50.0%	50.5%	48.1%	76.1%	0.0%	8.3%
56 Rutland	MC	62.6%	68.2%	62.0%	52.3%	84.5%	65.9%				
<i>59 Powell-Mason</i>	<i>CC</i>	<i>70.6%</i>	<i>69.9%</i>	<i>69.8%</i>	<i>68.9%</i>	<i>66.5%</i>	<i>69.1%</i>	<i>68.8%</i>	<i>63.1%</i>	<i>0.0%</i>	<i>0.0%</i>
<i>60 Powell-Hyde</i>	<i>CC</i>	<i>71.1%</i>	<i>68.1%</i>	<i>65.2%</i>	<i>70.1%</i>	<i>67.1%</i>	<i>68.3%</i>				
61 California St	CC	68.1%	72.1%	73.1%	70.3%	70.1%	70.7%				
66 Quintara	MC	70.8%	70.2%	64.2%	79.3%	76.6%	72.2%	83.8%	95.3%	0.0%	0.0%
67 Bernal Heights	MC	59.4%	76.6%	76.9%	69.6%	80.7%	72.6%				
<i>71 Haight-Noriega / 71L Lim</i>	<i>MC</i>	<i>68.7%</i>	<i>61.9%</i>	<i>64.1%</i>	<i>66.7%</i>	<i>61.2%</i>	<i>64.5%</i>				
76 Marin Headlands	MC					54.5%	54.5%				
80X Gateway Exp	MC	45.9%	33.3%	87.5%	90.0%	100.0%	71.3%	80.0%	NA	0.0%	
81X Caltrain Exp	MC	56.3%	62.5%	75.0%	25.0%	70.0%	57.8%				
82X Presidio & Wharves Exp	MC	61.6%	71.5%	66.4%	62.5%	41.7%	60.7%	83.3%	100.0%	0.0%	0.0%
88 BART Shuttle	MC	67.5%	60.3%	63.3%	68.6%	74.0%	66.7%	71.4%	52.6%	0.0%	0.0%
89 Laguna Honda	MC	55.2%	51.8%	56.6%	60.9%	77.4%	60.4%				
90 Owl	MC	87.3%	85.8%	72.2%	73.5%	94.4%	82.6%				
91 Owl	MC	56.3%	65.3%	72.2%	53.8%	65.1%	62.5%				
108 Treasure Island	MC	74.1%	94.7%	94.1%	79.2%	81.8%	84.8%	78.0%	84.2%	0.0%	0.0%
<i>F Market &amp; Wharves</i>	<i>LRV</i>	<i>69.6%</i>	<i>65.4%</i>	<i>71.3%</i>	<i>68.9%</i>	<i>69.4%</i>	<i>68.9%</i>	<i>67.1%</i>	<i>45.4%</i>	<i>0.0%</i>	<i>14.9%</i>
<i>J Church</i>	<i>LRV</i>	<i>68.6%</i>	<i>61.9%</i>	<i>66.1%</i>	<i>67.1%</i>	<i>67.0%</i>	<i>66.1%</i>	<i>72.2%</i>	<i>49.4%</i>	<i>0.0%</i>	<i>0.0%</i>
<i>K Ingleside / T Third</i>	<i>LRV</i>	<i>76.5%</i>	<i>72.1%</i>	<i>74.6%</i>	<i>74.5%</i>	<i>64.6%</i>	<i>72.4%</i>	<i>84.0%</i>	<i>66.1%</i>	<i>25.0%</i>	<i>0.0%</i>
<i>L Taraval</i>	<i>LRV</i>	<i>77.7%</i>	<i>75.7%</i>	<i>73.1%</i>	<i>74.6%</i>	<i>71.7%</i>	<i>74.6%</i>				
<i>M Ocean View</i>	<i>LRV</i>	<i>70.4%</i>	<i>63.4%</i>	<i>72.2%</i>	<i>65.8%</i>	<i>66.5%</i>	<i>67.6%</i>				
<i>N Judah</i>	<i>LRV</i>	<i>73.7%</i>	<i>75.8%</i>	<i>72.6%</i>	<i>66.9%</i>	<i>70.5%</i>	<i>71.9%</i>				

Element	FY09 Q1	FY09 Q2	FY09 Q3	FY09 Q4	FY10 Q1
<b>SFPD REPORTED CRIMES</b>					
<b>Part I Crimes (Violent)</b>					
Homicide	0	0	0	0	0
Rape	0	0	0	0	0
Robbery	37	57	31	43	37
Aggravated Assault	9	12	13	6	4
<i>Subtotal</i>	<i>46</i>	<i>69</i>	<i>44</i>	<i>49</i>	<i>41</i>
<b>Part I Crimes (Property)</b>					
Burglary	0	0	1	0	0
Larceny/Theft	136	150	101	125	150
Motor Vehicle Theft	0	0	0	0	0
Arson	0	0	0	0	0
<i>Subtotal</i>	<i>136</i>	<i>150</i>	<i>102</i>	<i>125</i>	<i>150</i>
<b>Part II Crimes</b>					
Other Assault	34	43	44	34	29
Malicious Mischief	3	0	9	15	13
Weapons	1	0	2	2	9
Sex Offenses	1	3	1	4	0
Disorderly Conduct	4	1	1	1	4
Drunkenness	5	4	7	3	2
<i>Subtotal</i>	<i>48</i>	<i>51</i>	<i>64</i>	<i>59</i>	<i>57</i>
<b>Total</b>	<b>230</b>	<b>270</b>	<b>210</b>	<b>233</b>	<b>248</b>
<b>OTHER SECURITY INCIDENTS</b>					
Threats	50	47	59	55	74
Disturbances	53	50	61	64	98
Graffiti/Vandalism	122	90	83	101	117
Miscellaneous	7	8	13	13	15
<b>Total</b>	<b>232</b>	<b>195</b>	<b>216</b>	<b>233</b>	<b>304</b>