

PUBLIC COMMENT PERIOD FOR CURB ZONE CHANGES

January 20 to 30, 2026

Cambios Propuestos en la Calle | 街道改變建議 | Ipinanukalang pagbabago sa kalsada



SFMTA

Item #1



Rescind Commercial Loading Zone

Reverts to Tow-Away, No Stopping, Any Time

Establish Commercial Loading Zone

Per request from the sponsoring temple to relocate loading zones following sidewalk widening. Parking orientation for the commercial loading will be parallel to allow for safe maneuvering.

2nd Avenue between Lake Street and Terminus – Relocating a Commercial Loading Zone **RESCIND – YELLOW ZONE, COMMERCIAL LOADING, 30-MINUTE LIMIT, 8AM TO 1PM, MONDAY THROUGH FRIDAY, AND 8AM TO MIDNIGHT, SATURDAY AND SUNDAY**

“6” 2nd Avenue, east side, from 72 feet to 92 feet north of Lake Steet (20-foot zone)

ESTABLISH – YELLOW ZONE, COMMERCIAL LOADING, 30-MINUTE LIMIT, 12PM TO 4PM, FRIDAY AND SATURDAY, AND 11PM SATURDAY TO 1AM SUNDAY

“6” 2nd Avenue, east side, from 52 feet to 72 feet north of Lake Steet (20-foot zone), Richmond, Supervisor District 1, Broderick Paulo, broderick.paulo@sfmta.com.

**Submit a comment on this item by 5pm on the last day of this 10-day noticing period:
January 20 to 30, 2026**

Online comments: Fill out form here [SFMTA.com/CurbZoneCommentForm](https://sfmta.com/CurbZoneCommentForm)

By phone: Call (415) 646-2599 leave voicemail, specify item number

By mail/drop-off: Curb Zone Changes, Public Noticing, SFMTA Streets Division,
One South Ness Avenue, 7th Floor, San Francisco, CA 94103-5417



[QR Code]
[SFMTA.com/CurbZoneChanges](https://sfmta.com/CurbZoneChanges)

At the end of the comment period, all feedback received will be reviewed by staff. Based on this feedback a recommendation to either approve, amend, or withdraw an item will be provided to the City Traffic Engineer who has the authority to make the final decision.

Results posted by 5 pm five business days after the end of each public comment period at:
[SFMTA.com/CurbZoneChanges](https://sfmta.com/CurbZoneChanges)

Final SFMTA Decisions involving certain parking or traffic modifications, whether made by the City Traffic Engineer or the SFMTA Board, can be reviewed by the Board of Supervisors pursuant to [Ordinance 127-18](#). Information about the review process can be found at [SFMTA.com/BOSAppeal](https://sfmta.com/BOSAppeal).

This public comment period constitutes a public hearing per San Francisco Transportation Code Division I, Section 101

PUBLIC COMMENT PERIOD FOR CURB ZONE CHANGES

January 20 to 30, 2026

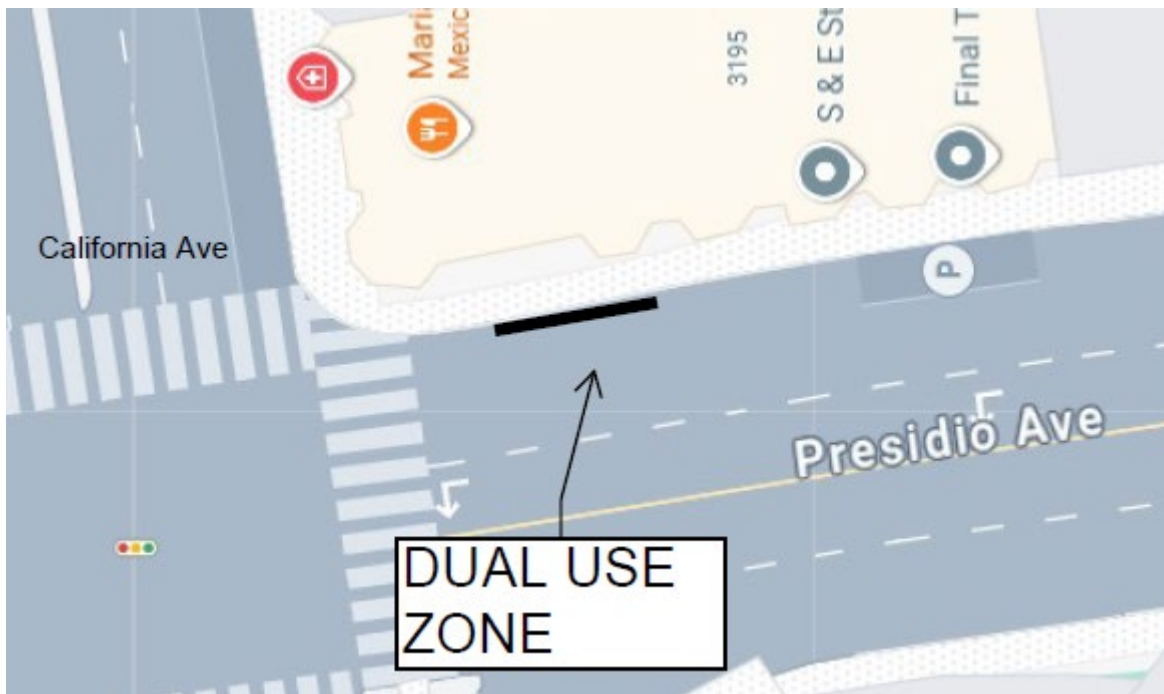
Cambios Propuestos en la Calle | 街道改變建議 | Ipinanukalang pagbabago sa kalsada



SFMTA

Item #2

Per the request of the adjacent restaurant, this zone would provide space for their commercial deliveries during the day and pickup and drop-off space in the evenings for guests and food deliveries.



Presidio Avenue between Pine Street and California Street – Establishing a Dual-Use Zone
ESTABLISH – DUAL-USE ZONE: METERED YELLOW ZONE, COMMERCIAL LOADING, 30-MINUTE LIMIT, 8AM TO 4PM, MONDAY THROUGH SATURDAY, AND GENERAL LOADING ZONE, 4PM TO 10PM, TUESDAY THROUGH SATURDAY

500 Presidio Avenue, east side, from 20 feet to 49 feet south of California Street at meter stall number 504 (29-foot zone), Presidio Heights, Supervisor District 2, Curb Access Program, ccp@sfmta.com.

**Submit a comment on this item by 5pm on the last day of this 10-day noticing period:
January 20 to 30, 2026**

Online comments: Fill out form here [SFMTA.com/CurbZoneCommentForm](https://sfmta.com/CurbZoneCommentForm)

By phone: Call (415) 646-2599 leave voicemail, specify item number

By mail/drop-off: Curb Zone Changes, Public Noticing, SFMTA Streets Division,
One South Ness Avenue, 7th Floor, San Francisco, CA 94103-5417



[QR Code]
[SFMTA.com/CurbZoneChanges](https://sfmta.com/CurbZoneChanges)

At the end of the comment period, all feedback received will be reviewed by staff. Based on this feedback a recommendation to either approve, amend, or withdraw an item will be provided to the City Traffic Engineer who has the authority to make the final decision.

Results posted by 5 pm five business days after the end of each public comment period at:
[SFMTA.com/CurbZoneChanges](https://sfmta.com/CurbZoneChanges)

Final SFMTA Decisions involving certain parking or traffic modifications, whether made by the City Traffic Engineer or the SFMTA Board, can be reviewed by the Board of Supervisors pursuant to [Ordinance 127-18](#). Information about the review process can be found at [SFMTA.com/BOSAppeal](https://sfmta.com/BOSAppeal).

This public comment period constitutes a public hearing per San Francisco Transportation Code Division I, Section 101

PUBLIC COMMENT PERIOD FOR CURB ZONE CHANGES

January 20 to 30, 2026

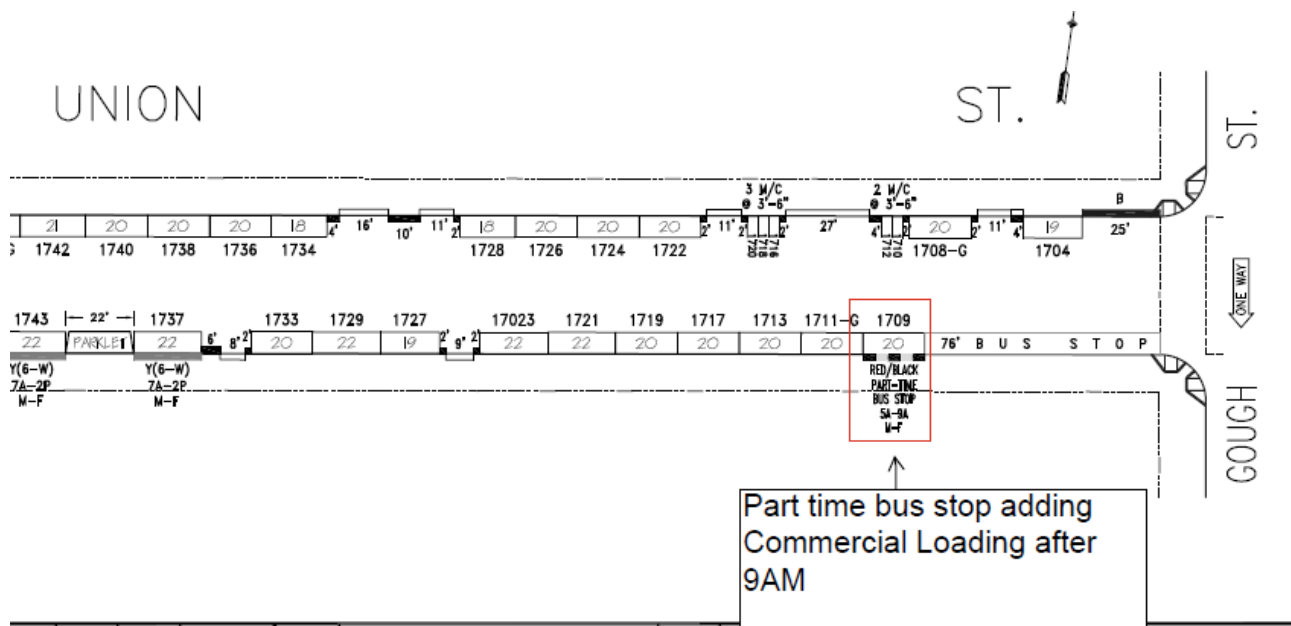
Cambios Propuestos en la Calle | 街道改變建議 | Ipinanukalang pagbabago sa kalsada



SFMTA

Item #3

Per the request of the fronting restaurant, the proposed commercial loading zone would provide space for commercial deliveries serving their business. It will be added to an existing part-time bus stop.



Union Street between Gough Street and Octavia Street – Establishing a Commercial Loading Zone

ESTABLISH – METERED YELLOW ZONE, COMMERCIAL LOADING, 30-MINUTE LIMIT, 9AM TO 6PM, MONDAY THROUGH SATURDAY

1715 Union Street, south side, from 76 feet to 96 feet west of Gough Street at meter stall number 1709 (20-foot zone), Cow Hollow, Supervisor District 2, Curb Access Program, ccp@sfmta.com.

**Submit a comment on this item by 5pm on the last day of this 10-day noticing period:
January 20 to 30, 2026**

Online comments: Fill out form here [SFMTA.com/CurbZoneCommentForm](https://sfmta.com/CurbZoneCommentForm)

By phone: Call (415) 646-2599 leave voicemail, specify item number

By mail/drop-off: Curb Zone Changes, Public Noticing, SFMTA Streets Division,
One South Ness Avenue, 7th Floor, San Francisco, CA 94103-5417



[QR Code]
[SFMTA.com/CurbZoneChanges](https://sfmta.com/CurbZoneChanges)

At the end of the comment period, all feedback received will be reviewed by staff. Based on this feedback a recommendation to either approve, amend, or withdraw an item will be provided to the City Traffic Engineer who has the authority to make the final decision.

Results posted by 5 pm five business days after the end of each public comment period at:
[SFMTA.com/CurbZoneChanges](https://sfmta.com/CurbZoneChanges)

Final SFMTA Decisions involving certain parking or traffic modifications, whether made by the City Traffic Engineer or the SFMTA Board, can be reviewed by the Board of Supervisors pursuant to [Ordinance 127-18](#). Information about the review process can be found at [SFMTA.com/BOSAppeal](https://sfmta.com/BOSAppeal).

This public comment period constitutes a public hearing per San Francisco Transportation Code Division I, Section 101

PUBLIC COMMENT PERIOD FOR CURB ZONE CHANGES

January 20 to 30, 2026

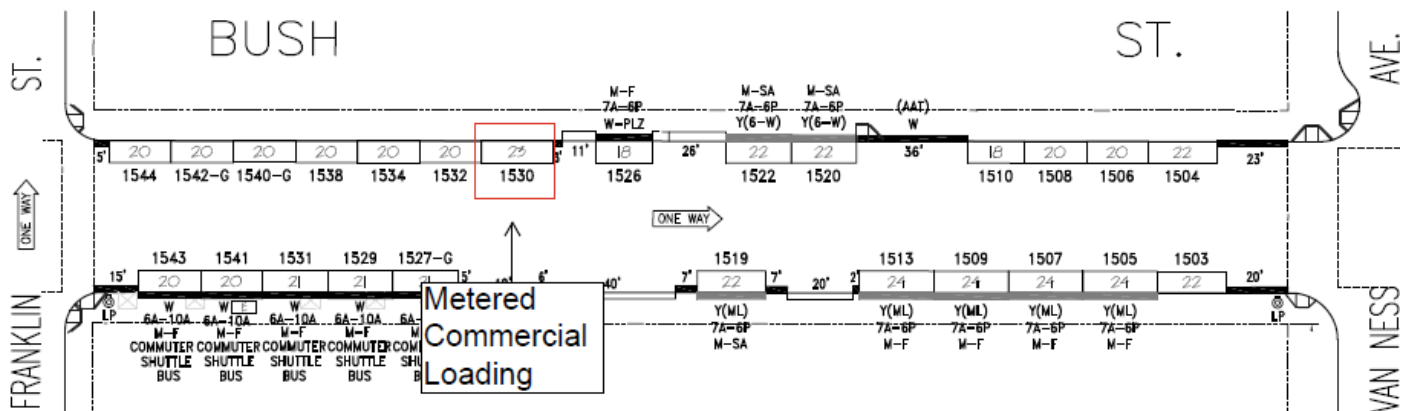
Cambios Propuestos en la Calle | 街道改變建議 | Ipananukalang pagbabago sa kalsada



SFMTA

Item #4

The fronting business has requested commercial loading at this location for deliveries. This zone would also be shared with neighboring businesses.



Bush Street between Franklin Street and Van Ness Avenue – Establishing a Commercial Loading Zone

ESTABLISH – METERED YELLOW ZONE, COMMERCIAL LOADING, 30-MINUTE LIMIT, 8AM TO 6PM, MONDAY THROUGH SATURDAY

Bush Street, north side, from 125 feet to 148 feet east of Franklin Street at metered stall number 1530 (23-foot zone), Western Addition, Supervisor District 2, Curb Access Program, ccp@sfmta.com.

**Submit a comment on this item by 5pm on the last day of this 10-day noticing period:
January 20 to 30, 2026**

Online comments: Fill out form here [SFMTA.com/CurbZoneCommentForm](https://sfmta.com/CurbZoneCommentForm)

By phone: Call (415) 646-2599 leave voicemail, specify item number

By mail/drop-off: Curb Zone Changes, Public Noticing, SFMTA Streets Division,
One South Ness Avenue, 7th Floor, San Francisco, CA 94103-5417



[QR Code]
[SFMTA.com/CurbZoneChanges](https://sfmta.com/CurbZoneChanges)

At the end of the comment period, all feedback received will be reviewed by staff. Based on this feedback a recommendation to either approve, amend, or withdraw an item will be provided to the City Traffic Engineer who has the authority to make the final decision.

Results posted by 5 pm five business days after the end of each public comment period at:
[SFMTA.com/CurbZoneChanges](https://sfmta.com/CurbZoneChanges)

Final SFMTA Decisions involving certain parking or traffic modifications, whether made by the City Traffic Engineer or the SFMTA Board, can be reviewed by the Board of Supervisors pursuant to [Ordinance 127-18](#). Information about the review process can be found at [SFMTA.com/BOSAppeal](https://sfmta.com/BOSAppeal).

This public comment period constitutes a public hearing per San Francisco Transportation Code Division I, Section 101

PUBLIC COMMENT PERIOD FOR CURB ZONE CHANGES

January 20 to 30, 2026

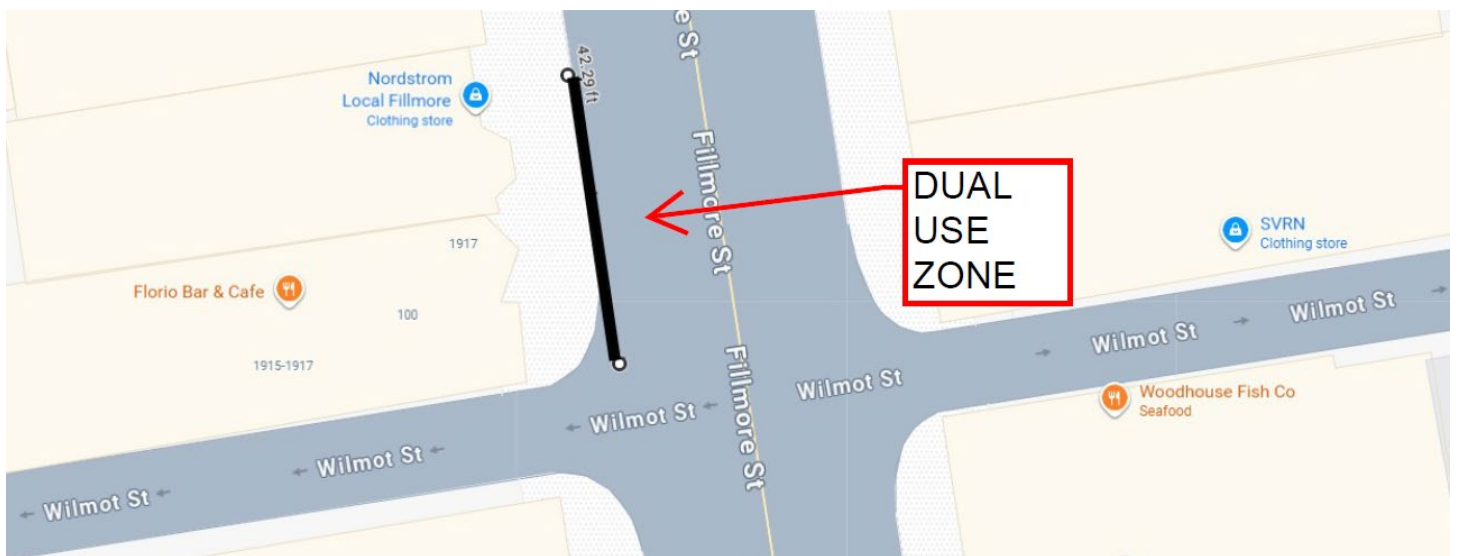
Cambios Propuestos en la Calle | 街道改變建議 | Ipinanukalang pagbabago sa kalsada



SFMTA

Item #5

A new business has moved in and to better meet their loading needs the type of zone has been changed from a commercial loading zone to a dual-use zone with both commercial loading and general loading. An additional parking space will be established.



Fillmore Street between Pine Street and Wilmot Street – Establishing a Dual-Use Zone

RESCIND – METERED YELLOW ZONE, COMMERCIAL LOADING, 30-MINUTE LIMIT, 8AM TO 6PM, MONDAY THROUGH SATURDAY

1921 Fillmore Street, west side, from 20 feet to 42 feet north of Wilmot Street, at metered stall number 1921 (22-foot zone)

ESTABLISH – DUAL-USE ZONE: METERED YELLOW ZONE, COMMERCIAL LOADING, 30-MINUTE LIMIT, 8AM TO 4PM, MONDAY THROUGH SATURDAY AND, GENERAL LOADING ZONE, 4PM TO 8PM, MONDAY THROUGH SATURDAY AND 11AM TO 6PM, SUNDAYS

1919 Fillmore Street, west side, from 0 feet to 42 feet north of Wilmot Street, at metered stall number 1921 (42-foot zone), Pacific Heights, Supervisor District 5, Curb Access Program, ccp@sfmta.com

**Submit a comment on this item by 5pm on the last day of this 10-day noticing period:
January 20 to 30, 2026**

Online comments: Fill out form here [SFMTA.com/CurbZoneCommentForm](https://sfmta.com/CurbZoneCommentForm)

By phone: Call (415) 646-2599 leave voicemail, specify item number

By mail/drop-off: Curb Zone Changes, Public Noticing, SFMTA Streets Division,
One South Ness Avenue, 7th Floor, San Francisco, CA 94103-5417



[QR Code]
[SFMTA.com/CurbZoneChanges](https://sfmta.com/CurbZoneChanges)

At the end of the comment period, all feedback received will be reviewed by staff. Based on this feedback a recommendation to either approve, amend, or withdraw an item will be provided to the City Traffic Engineer who has the authority to make the final decision.

Results posted by 5 pm five business days after the end of each public comment period at:
[SFMTA.com/CurbZoneChanges](https://sfmta.com/CurbZoneChanges)

Final SFMTA Decisions involving certain parking or traffic modifications, whether made by the City Traffic Engineer or the SFMTA Board, can be reviewed by the Board of Supervisors pursuant to [Ordinance 127-18](#). Information about the review process can be found at [SFMTA.com/BOSAppeal](https://sfmta.com/BOSAppeal).

This public comment period constitutes a public hearing per San Francisco Transportation Code Division I, Section 101

PUBLIC COMMENT PERIOD FOR CURB ZONE CHANGES

January 20 to 30, 2026

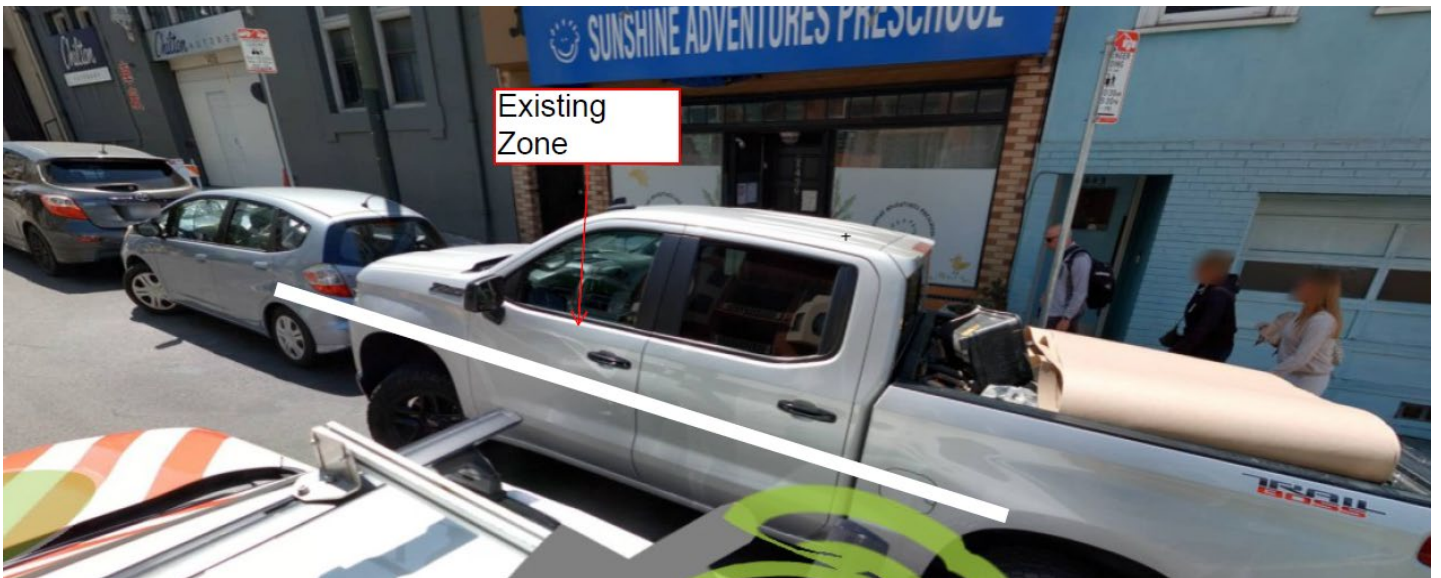
Cambios Propuestos en la Calle | 街道改變建議 | Ipinanukalang pagbabago sa kalsada



SFMTA

Item #6

Per the request of the sponsoring daycare, the afternoon hours of an existing passenger loading zone would be extended from 5:30pm to 6:00pm to better accommodate pickups.



Pacific Avenue between Larkin Street and Hyde Street – Extending the Hours of a Passenger Loading Zone

RESCIND – WHITE ZONE, PASSENGER LOADING, 5-MINUTE LIMIT, 8AM to 10:30AM and 4PM to 5:30PM, MONDAY THROUGH FRIDAY

ESTABLISH – WHITE ZONE, PASSENGER LOADING, 5-MINUTE LIMIT, 8AM to 10:30AM and 4PM to 6PM, MONDAY THROUGH FRIDAY¹

1439 Pacific Avenue, south side, from 33 feet (edge of driveway) to 73 feet east of McCormick Street (40-foot zone), Nob Hill, Supervisor District 3, Curb Access Program, ccp@sfmta.com.

**Submit a comment on this item by 5pm on the last day of this 10-day noticing period:
January 20 to 30, 2026**

Online comments: Fill out form here [SFMTA.com/CurbZoneCommentForm](https://sfmta.com/CurbZoneCommentForm)

By phone: Call (415) 646-2599 leave voicemail, specify item number

By mail/drop-off: Curb Zone Changes, Public Noticing, SFMTA Streets Division,
One South Ness Avenue, 7th Floor, San Francisco, CA 94103-5417



[QR Code]
[SFMTA.com/CurbZoneChanges](https://sfmta.com/CurbZoneChanges)

At the end of the comment period, all feedback received will be reviewed by staff. Based on this feedback a recommendation to either approve, amend, or withdraw an item will be provided to the City Traffic Engineer who has the authority to make the final decision.

Results posted by 5 pm five business days after the end of each public comment period at:
[SFMTA.com/CurbZoneChanges](https://sfmta.com/CurbZoneChanges)

Final SFMTA Decisions involving certain parking or traffic modifications, whether made by the City Traffic Engineer or the SFMTA Board, can be reviewed by the Board of Supervisors pursuant to [Ordinance 127-18](#). Information about the review process can be found at [SFMTA.com/BOSAppeal](https://sfmta.com/BOSAppeal).

This public comment period constitutes a public hearing per San Francisco Transportation Code Division I, Section 101

PUBLIC COMMENT PERIOD FOR CURB ZONE CHANGES

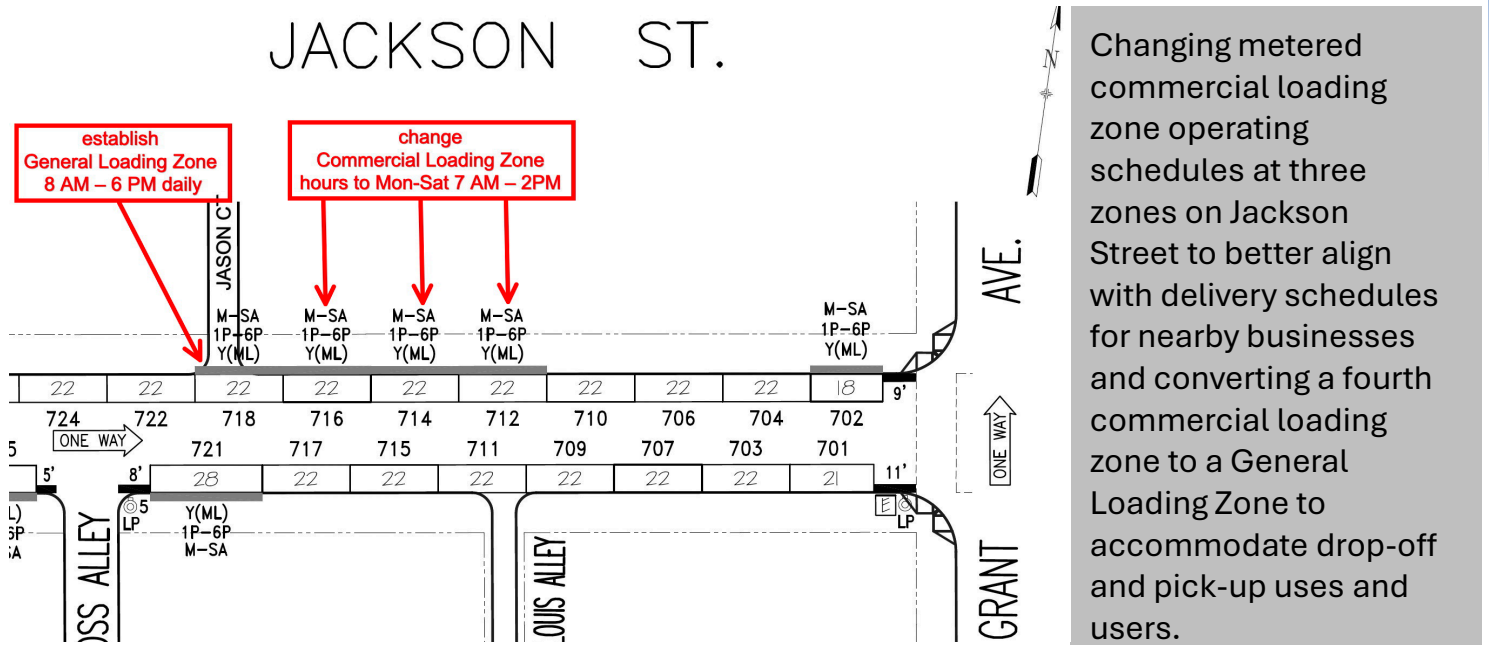
January 20 to 30, 2026

Cambios Propuestos en la Calle | 街道改變建議 | Ipinanukalang pagbabago sa kalsada



SFMTA

Item #7



Jackson Street between Stockton Street and Grant Avenue – Changing the Hours and Length of a Commercial Loading Zone and Establishing a General Loading Zone

RESCIND – METERED YELLOW ZONE, COMMERCIAL LOADING, 30-MINUTE LIMIT, 1PM TO 6PM, MONDAY THOUGH SATURDAY

“728” Jackson Street, north side, from 93 feet to 181 feet west of Grant Avenue at meter stall numbers 712, 714, 716, and 718 (88-foot zone)

ESTABLISH – METERED YELLOW ZONE, COMMERCIAL LOADING, 30-MINUTE LIMIT, 7AM TO 2PM, MONDAY THOUGH SATURDAY

“728” Jackson Street, north side, from 93 feet to 159 feet west of Grant Avenue at meter stall numbers 712, 714, and 716 (66-foot zone)

ESTABLISH – GENERAL LOADING ZONE, 5-MINUTE LIMIT, 8AM TO 6PM, DAILY

“732” Jackson Street, north side, from 159 feet to 181 feet west of Grant Avenue at meter stall number 718 (22-foot zone), Chinatown, Supervisor District 3, Andy Thornley, andy.thornley@sfmta.com.

**Submit a comment on this item by 5pm on the last day of this 10-day noticing period:
January 20 to 30, 2026**

Online comments: Fill out form here [SFMTA.com/CurbZoneCommentForm](https://sfmta.com/CurbZoneCommentForm)

By phone: Call (415) 646-2599 leave voicemail, specify item number

By mail/drop-off: Curb Zone Changes, Public Noticing, SFMTA Streets Division,
One South Ness Avenue, 7th Floor, San Francisco, CA 94103-5417



[QR Code]
SFMTA.com/CurbZoneChanges

At the end of the comment period, all feedback received will be reviewed by staff. Based on this feedback a recommendation to either approve, amend, or withdraw an item will be provided to the City Traffic Engineer who has the authority to make the final decision.

Results posted by 5 pm five business days after the end of each public comment period at:
[SFMTA.com/CurbZoneChanges](https://sfmta.com/CurbZoneChanges)

Final SFMTA Decisions involving certain parking or traffic modifications, whether made by the City Traffic Engineer or the SFMTA Board, can be reviewed by the Board of Supervisors pursuant to [Ordinance 127-18](#). Information about the review process can be found at [SFMTA.com/BOSAppeal](https://sfmta.com/BOSAppeal).

This public comment period constitutes a public hearing per San Francisco Transportation Code Division I, Section 101

PUBLIC COMMENT PERIOD FOR CURB ZONE CHANGES

January 20 to 30, 2026

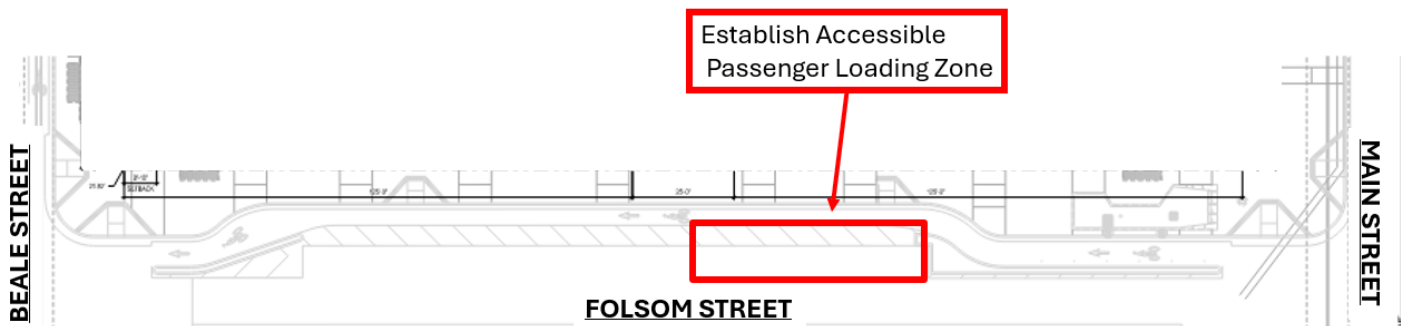
Cambios Propuestos en la Calle | 街道改變建議 | Ipinanukalang pagbabago sa kalsada



SFMTA

Item #8

Proposal to establish an accessible passenger loading zone for a new affordable housing development.



Folsom Street between Beale Street and Main Street – Establishing an Accessible Passenger Loading Zone

ESTABLISH – WHITE ZONE, ACCESSIBLE PASSENGER LOADING, 5-MINUTE LIMIT, AT ALL TIMES

230 Folsom Street, north side, from 87 feet to 137 feet west of Main Street (50-foot zone), Rincon Hill, Supervisor District 6, Broderick Paulo, Broderick.paulo@sfmta.com.

**Submit a comment on this item by 5pm on the last day of this 10-day noticing period:
January 20 to 30, 2026**

Online comments: Fill out form here [SFMTA.com/CurbZoneCommentForm](https://sfmta.com/CurbZoneCommentForm)

By phone: Call (415) 646-2599 leave voicemail, specify item number

By mail/drop-off: Curb Zone Changes, Public Noticing, SFMTA Streets Division,
One South Ness Avenue, 7th Floor, San Francisco, CA 94103-5417



[QR Code]
[SFMTA.com/CurbZoneChanges](https://sfmta.com/CurbZoneChanges)

At the end of the comment period, all feedback received will be reviewed by staff. Based on this feedback a recommendation to either approve, amend, or withdraw an item will be provided to the City Traffic Engineer who has the authority to make the final decision.

Results posted by 5 pm five business days after the end of each public comment period at:
[SFMTA.com/CurbZoneChanges](https://sfmta.com/CurbZoneChanges)

Final SFMTA Decisions involving certain parking or traffic modifications, whether made by the City Traffic Engineer or the SFMTA Board, can be reviewed by the Board of Supervisors pursuant to [Ordinance 127-18](#). Information about the review process can be found at [SFMTA.com/BOSAppeal](https://sfmta.com/BOSAppeal).

This public comment period constitutes a public hearing per San Francisco Transportation Code Division I, Section 101

PUBLIC COMMENT PERIOD FOR CURB ZONE CHANGES

January 20 to 30, 2026

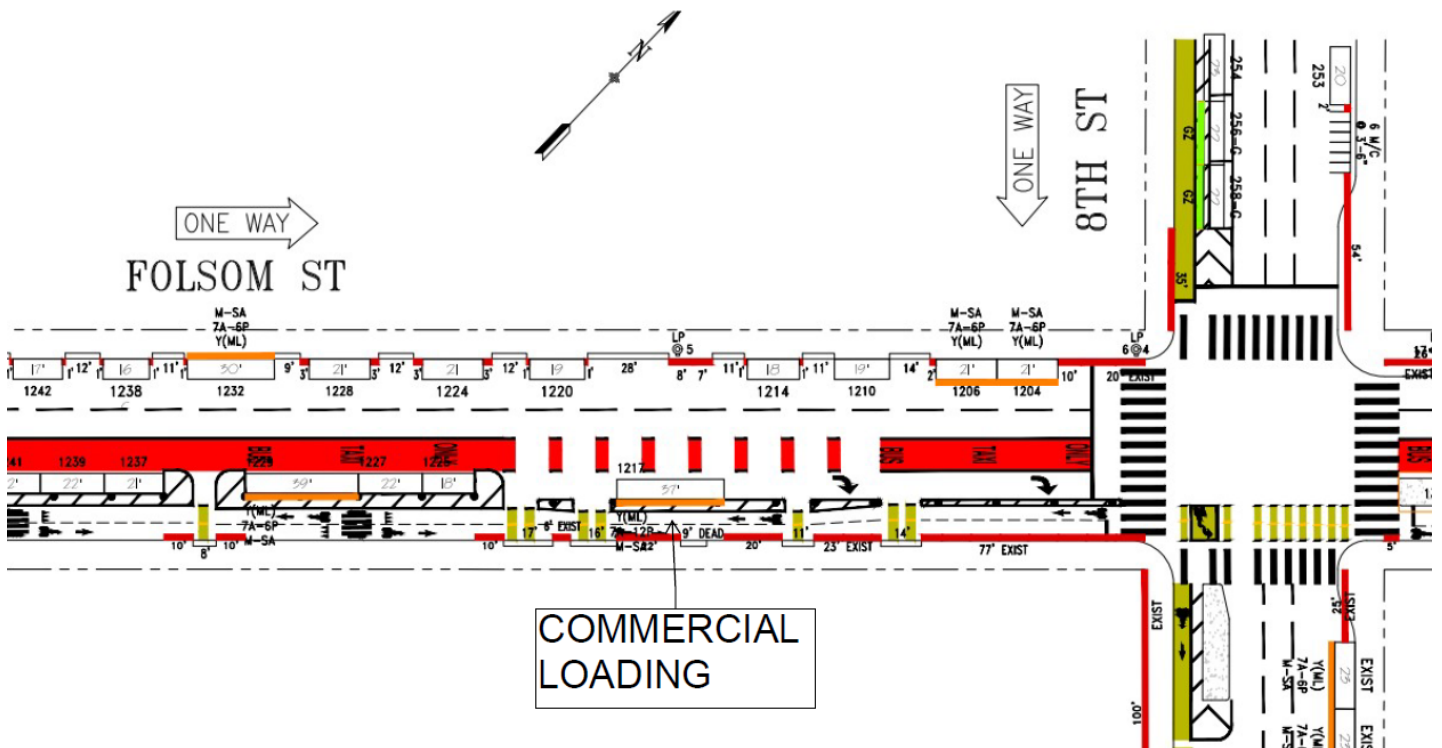
Cambios Propuestos en la Calle | 街道改變建議 | Ipananukalang pagbabago sa kalsada



SFMTA

Item #9

In response to feedback from Folsom businesses noting a need for commercial loading to be incorporated into Folsom Streetscape Project.



Folsom Street between 8th Street and 9th Street – Establishing a Commercial Loading Zone **ESTABLISH – METERED YELLOW ZONE, COMMERCIAL LOADING, 30-MINUTE LIMIT, 7AM TO NOON, MONDAY THROUGH SATURDAY**

1225 Folsom, south side, from 145 feet to 182 feet west of 8th Street at meter stall number 1217 (37-foot zone), SOMA, Supervisor District 6, Shayda Rager, shayda.rager@sfmta.com.

**Submit a comment on this item by 5pm on the last day of this 10-day noticing period:
January 20 to 30, 2026**

- Online comments:** Fill out form here [SFMTA.com/CurbZoneCommentForm](https://sfmta.com/CurbZoneCommentForm)
- By phone:** Call (415) 646-2599 leave voicemail, specify item number
- By mail/drop-off:** Curb Zone Changes, Public Noticing, SFMTA Streets Division, One South Ness Avenue, 7th Floor, San Francisco, CA 94103-5417



[QR Code]
[SFMTA.com/CurbZoneChanges](https://sfmta.com/CurbZoneChanges)

At the end of the comment period, all feedback received will be reviewed by staff. Based on this feedback a recommendation to either approve, amend, or withdraw an item will be provided to the City Traffic Engineer who has the authority to make the final decision.

Results posted by 5 pm five business days after the end of each public comment period at:
[SFMTA.com/CurbZoneChanges](https://sfmta.com/CurbZoneChanges)

Final SFMTA Decisions involving certain parking or traffic modifications, whether made by the City Traffic Engineer or the SFMTA Board, can be reviewed by the Board of Supervisors pursuant to [Ordinance 127-18](#). Information about the review process can be found at [SFMTA.com/BOSAppeal](https://sfmta.com/BOSAppeal).

This public comment period constitutes a public hearing per San Francisco Transportation Code Division I, Section 101

PUBLIC COMMENT PERIOD FOR CURB ZONE CHANGES

January 20 to 30, 2026

Cambios Propuestos en la Calle | 街道改變建議 | Ipinanukalang pagbabago sa kalsada



SFMTA

Item #10

An existing passenger loading zone would be shifted to accommodate required daylighting under Assembly Bill 413 to improve pedestrian visibility. The hours and days of the zone would be updated to better match the needs of the sponsoring church.



Fulton Street between Octavia Street and Laguna Street - Shifting a Passenger Loading Zone for Daylighting and Updating Hours

RESCIND – WHITE ZONE, PASSENGER LOADING, DURING POSTED SERVICES

501 Fulton Street, south side, from 13 feet to 31 feet west of Octavia Street (18-foot zone)

ESTABLISH – RED ZONE, NO STOPPING ANYTIME

501 Fulton Street, south side, from 0 feet to 20 feet west of Octavia Street (20-foot zone)

ESTABLISH – WHITE ZONE, PASSENGER LOADING, 5-MINUTE LIMIT, 6PM TO 10PM, TUESDAY THROUGH THURSDAY AND 9AM TO 4PM, SATURDAYS AND SUNDAYS

501 Fulton Street, south side, from 20 feet to 38 feet west of Octavia Street (18-foot zone), Western Addition, Supervisor District 5, Curb Access Program, ccp@sfmta.com.

**Submit a comment on this item by 5pm on the last day of this 10-day noticing period:
January 20 to 30, 2026**

Online comments: Fill out form here [SFMTA.com/CurbZoneCommentForm](https://sfmta.com/CurbZoneCommentForm)

By phone: Call (415) 646-2599 leave voicemail, specify item number

By mail/drop-off: Curb Zone Changes, Public Noticing, SFMTA Streets Division,
One South Ness Avenue, 7th Floor, San Francisco, CA 94103-5417



[QR Code]
[SFMTA.com/CurbZoneChanges](https://sfmta.com/CurbZoneChanges)

At the end of the comment period, all feedback received will be reviewed by staff. Based on this feedback a recommendation to either approve, amend, or withdraw an item will be provided to the City Traffic Engineer who has the authority to make the final decision.

Results posted by 5 pm five business days after the end of each public comment period at:
[SFMTA.com/CurbZoneChanges](https://sfmta.com/CurbZoneChanges)

Final SFMTA Decisions involving certain parking or traffic modifications, whether made by the City Traffic Engineer or the SFMTA Board, can be reviewed by the Board of Supervisors pursuant to [Ordinance 127-18](#). Information about the review process can be found at [SFMTA.com/BOSAppeal](https://sfmta.com/BOSAppeal).

This public comment period constitutes a public hearing per San Francisco Transportation Code Division I, Section 101

PUBLIC COMMENT PERIOD FOR CURB ZONE CHANGES

January 20 to 30, 2026

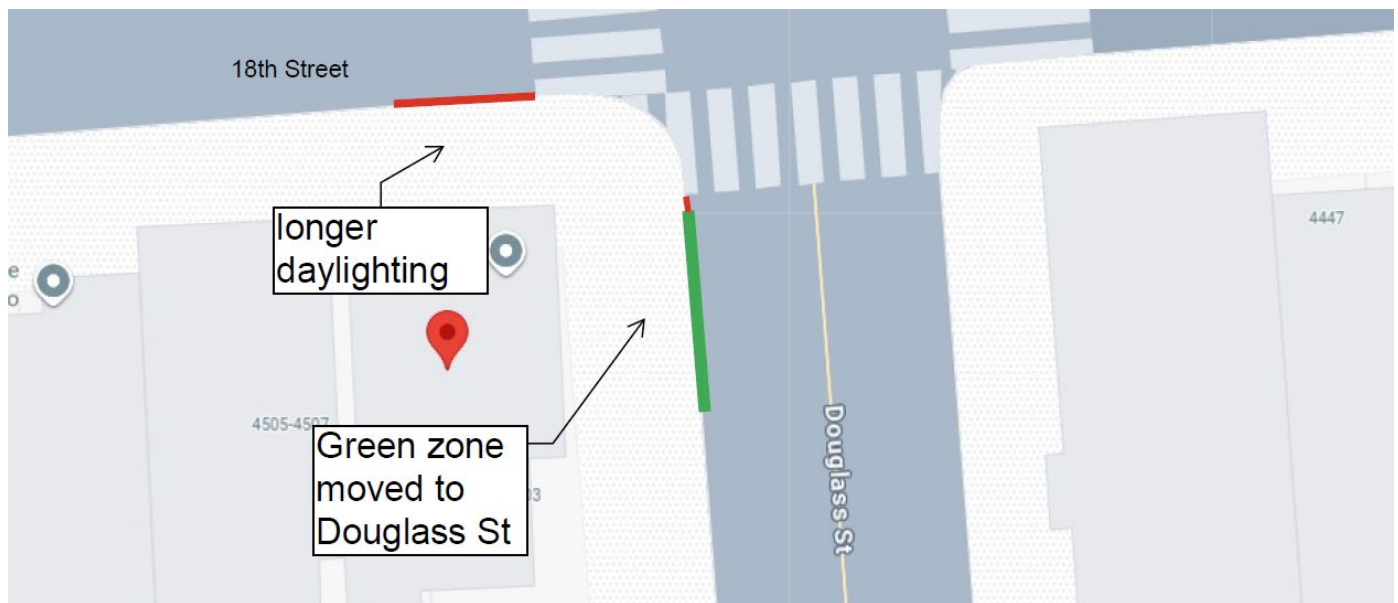
Cambios Propuestos en la Calle | 街道改變建議 | Ipinanukalang pagbabago sa kalsada



SFMTA

Item #11

This green zone is being moved around the corner from 18th Street to Douglass Street to provide required red curb for daylighting under State Law AB413 to improve pedestrian visibility on 18th Street.



18th Street and Douglass Street – Relocating Short-Term Parking for Daylighting

RESCIND – GREEN ZONE, SHORT-TERM PARKING, 10-MINUTE LIMIT, 9AM TO 6PM, MONDAY THROUGH SATURDAY

4501 18th Street, south side, from 5 feet to 25 feet west of Douglass Street (20-foot zone).

ESTABLISH – RED ZONE, NO STOPPING ANYTIME

4501 18th Street, south side, from Douglass Street to 20 feet westerly (20-foot zone).

ESTABLISH - GREEN ZONE, SHORT-TERM PARKING, 10-MINUTE LIMIT, 9AM TO 6PM, MONDAY THROUGH SATURDAY

200 Douglass Street, west side, from 2 feet to 22 feet south of 18th Street (20-foot zone), Castro/Upper Market, Supervisor District 8, Curb Access Program, ccp@sfmta.com.

**Submit a comment on this item by 5pm on the last day of this 10-day noticing period:
January 20 to 30, 2026**

Online comments: Fill out form here [SFMTA.com/CurbZoneCommentForm](https://sfmta.com/CurbZoneCommentForm)

By phone: Call (415) 646-2599 leave voicemail, specify item number

By mail/drop-off: Curb Zone Changes, Public Noticing, SFMTA Streets Division,
One South Ness Avenue, 7th Floor, San Francisco, CA 94103-5417



[QR Code]
[SFMTA.com/CurbZoneChanges](https://sfmta.com/CurbZoneChanges)

At the end of the comment period, all feedback received will be reviewed by staff. Based on this feedback a recommendation to either approve, amend, or withdraw an item will be provided to the City Traffic Engineer who has the authority to make the final decision.

Results posted by 5 pm five business days after the end of each public comment period at:
[SFMTA.com/CurbZoneChanges](https://sfmta.com/CurbZoneChanges)

Final SFMTA Decisions involving certain parking or traffic modifications, whether made by the City Traffic Engineer or the SFMTA Board, can be reviewed by the Board of Supervisors pursuant to [Ordinance 127-18](#). Information about the review process can be found at [SFMTA.com/BOSAppeal](https://sfmta.com/BOSAppeal).

This public comment period constitutes a public hearing per San Francisco Transportation Code Division I, Section 101

PUBLIC COMMENT PERIOD FOR CURB ZONE CHANGES

January 20 to 30, 2026

Cambios Propuestos en la Calle | 街道改變建議 | Ipananukalang pagbabago sa kalsada



SFMTA

Item #12



An existing green zone would be relocated from Guerrero Street to 24th Street to accommodate required red curb daylighting under Assembly Bill 413 to improve pedestrian visibility. A historic yellow zone that is no longer needed would be removed.

Guerrero Street and 24th Street – Relocating Short-Term Parking for Daylighting and Removing a Commercial Loading Zone

RESCIND – GREEN ZONE, SHORT-TERM PARKING, 10-MINUTE LIMIT, 9AM TO 6PM, MONDAY THROUGH SATURDAY

1198 Guerrero Street, west side, from 6 feet to 22 feet north of 24th Street (16-foot zone)

ESTABLISH – RED ZONE, NO STOPPING ANYTIME

1198 Guerrero Street, west side, from 0 feet to 20 feet north of 24th Street (20-foot zone)

RESCIND – YELLOW ZONE, COMMERCIAL LOADING, 30-MINUTE LIMIT, 8AM TO 6PM, MONDAY THROUGH FRIDAY

"3600" 24th Street, north side, from 12 feet to 52 feet west of Guerrero Street (40-foot zone)

ESTABLISH – GREEN ZONE, SHORT-TERM PARKING, 10-MINUTE LIMIT, 9AM TO 6PM, MONDAY THROUGH SATURDAY

"3600" 24th Street, north side, from 12 feet to 22 feet west of Guerrero Street (20-foot zone), Mission, Supervisor District 8, Curb Access Program, ccp@sfmta.com.

**Submit a comment on this item by 5pm on the last day of this 10-day noticing period:
January 20 to 30, 2026**

Online comments: Fill out form here [SFMTA.com/CurbZoneCommentForm](https://sfmta.com/CurbZoneCommentForm)

By phone: Call (415) 646-2599 leave voicemail, specify item number

By mail/drop-off: Curb Zone Changes, Public Noticing, SFMTA Streets Division,
One South Ness Avenue, 7th Floor, San Francisco, CA 94103-5417



[QR Code]
[SFMTA.com/CurbZoneChanges](https://sfmta.com/CurbZoneChanges)

At the end of the comment period, all feedback received will be reviewed by staff. Based on this feedback a recommendation to either approve, amend, or withdraw an item will be provided to the City Traffic Engineer who has the authority to make the final decision.

Results posted by 5 pm five business days after the end of each public comment period at:
[SFMTA.com/CurbZoneChanges](https://sfmta.com/CurbZoneChanges)

Final SFMTA Decisions involving certain parking or traffic modifications, whether made by the City Traffic Engineer or the SFMTA Board, can be reviewed by the Board of Supervisors pursuant to [Ordinance 127-18](#). Information about the review process can be found at [SFMTA.com/BOSAppeal](https://sfmta.com/BOSAppeal).

This public comment period constitutes a public hearing per San Francisco Transportation Code Division I, Section 101

PUBLIC COMMENT PERIOD FOR CURB ZONE CHANGES

January 20 to 30, 2026

Cambios Propuestos en la Calle | 街道改變建議 | Ipinanukalang pagbabago sa kalsada



SFMTA

Item #13

Per request of a new community housing village to establish a passenger loading zone.



Connecticut Street between 25th Street and 26th Street – Establishing a Passenger Loading Zone
ESTABLISH – WHITE ZONE, PASSENGER LOADING, 5-MINUTE LIMIT, 7AM TO 10PM, DAILY
1108 Connecticut Street, west side, from 13 feet to 53 feet south of 25th Street (40-foot zone), Potrero Hill, Supervisor District 10, Broderick Paulo, broderick.paulo@sfmta.com.

**Submit a comment on this item by 5pm on the last day of this 10-day noticing period:
January 20 to 30, 2026**

Online comments: Fill out form here [SFMTA.com/CurbZoneCommentForm](https://sfmta.com/CurbZoneCommentForm)
By phone: Call (415) 646-2599 leave voicemail, specify item number
By mail/drop-off: Curb Zone Changes, Public Noticing, SFMTA Streets Division,
One South Ness Avenue, 7th Floor, San Francisco, CA 94103-5417



[QR Code]
[SFMTA.com/CurbZoneChanges](https://sfmta.com/CurbZoneChanges)

At the end of the comment period, all feedback received will be reviewed by staff. Based on this feedback a recommendation to either approve, amend, or withdraw an item will be provided to the City Traffic Engineer who has the authority to make the final decision.

Results posted by 5 pm five business days after the end of each public comment period at:
[SFMTA.com/CurbZoneChanges](https://sfmta.com/CurbZoneChanges)

Final SFMTA Decisions involving certain parking or traffic modifications, whether made by the City Traffic Engineer or the SFMTA Board, can be reviewed by the Board of Supervisors pursuant to [Ordinance 127-18](#). Information about the review process can be found at [SFMTA.com/BOSAppeal](https://sfmta.com/BOSAppeal).

This public comment period constitutes a public hearing per San Francisco Transportation Code Division I, Section 101

PUBLIC COMMENT PERIOD FOR CURB ZONE CHANGES

January 20 to 30, 2026

Cambios Propuestos en la Calle | 街道改變建議 | Ipinanukalang pagbabago sa kalsada



SFMTA

Item #14

Per request of a new community housing village to establish a passenger loading zone.



26th Street between Connecticut Street and Wisconsin Street – Establishing a Passenger Loading Zone

ESTABLISH – WHITE ZONE, PASSENGER LOADING, 5-MINUTE LIMIT, 7AM TO 10PM, DAILY
"1718" 26th Street, north side, from 32 feet to 72 feet west of Connecticut Street, (40-foot zone), Potrero Hill, Supervisor District 10, Broderick Paulo, broderick.paulo@sfmta.com

**Submit a comment on this item by 5pm on the last day of this 10-day noticing period:
January 20 to 30, 2026**

Online comments: Fill out form here [SFMTA.com/CurbZoneCommentForm](https://sfmta.com/CurbZoneCommentForm)
By phone: Call (415) 646-2599 leave voicemail, specify item number
By mail/drop-off: Curb Zone Changes, Public Noticing, SFMTA Streets Division,
One South Ness Avenue, 7th Floor, San Francisco, CA 94103-5417



[QR Code]
[SFMTA.com/CurbZoneChanges](https://sfmta.com/CurbZoneChanges)

At the end of the comment period, all feedback received will be reviewed by staff. Based on this feedback a recommendation to either approve, amend, or withdraw an item will be provided to the City Traffic Engineer who has the authority to make the final decision.

Results posted by 5 pm five business days after the end of each public comment period at:
[SFMTA.com/CurbZoneChanges](https://sfmta.com/CurbZoneChanges)

Final SFMTA Decisions involving certain parking or traffic modifications, whether made by the City Traffic Engineer or the SFMTA Board, can be reviewed by the Board of Supervisors pursuant to [Ordinance 127-18](#). Information about the review process can be found at [SFMTA.com/BOSAppeal](https://sfmta.com/BOSAppeal).

This public comment period constitutes a public hearing per San Francisco Transportation Code Division I, Section 101

PUBLIC COMMENT PERIOD FOR CURB ZONE CHANGES

January 20 to 30, 2026

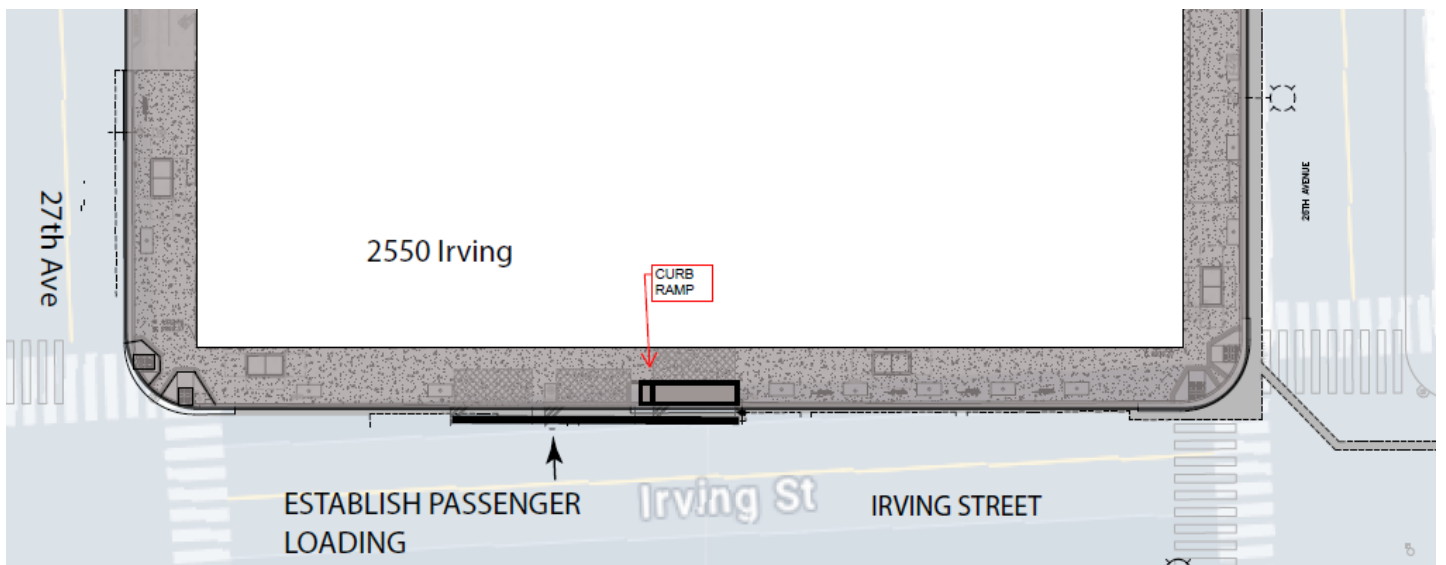
Cambios Propuestos en la Calle | 街道改變建議 | Ipinanukalang pagbabago sa kalsada



SFMTA

Item #15

Per request of a new 90-unit multifamily housing development to establish an accessible passenger loading zone.



Irving Street between 27th Avenue and 26th Avenue – Establishing an Accessible Passenger Loading Zone

ESTABLISH – WHITE ZONE, ACCESSIBLE PASSENGER LOADING, 5-MINUTE LIMIT, 7AM TO 10PM, DAILY

2550 Irving Street, north side, from 62 feet to 132 feet east of 27th Avenue, at meter stall numbers 2522, 2520, 2514, and 2512 (70-foot zone), Sunset, Supervisor District 4, Broderick Paulo, broderick.paulo@sfmta.com

**Submit a comment on this item by 5pm on the last day of this 10-day noticing period:
January 20 to 30, 2026**

Online comments: Fill out form here [SFMTA.com/CurbZoneCommentForm](https://sfmta.com/CurbZoneCommentForm)

By phone: Call (415) 646-2599 leave voicemail, specify item number

By mail/drop-off: Curb Zone Changes, Public Noticing, SFMTA Streets Division,
One South Ness Avenue, 7th Floor, San Francisco, CA 94103-5417



[QR Code]
[SFMTA.com/CurbZoneChanges](https://sfmta.com/CurbZoneChanges)

At the end of the comment period, all feedback received will be reviewed by staff. Based on this feedback a recommendation to either approve, amend, or withdraw an item will be provided to the City Traffic Engineer who has the authority to make the final decision.

Results posted by 5 pm five business days after the end of each public comment period at:
[SFMTA.com/CurbZoneChanges](https://sfmta.com/CurbZoneChanges)

Final SFMTA Decisions involving certain parking or traffic modifications, whether made by the City Traffic Engineer or the SFMTA Board, can be reviewed by the Board of Supervisors pursuant to [Ordinance 127-18](#). Information about the review process can be found at [SFMTA.com/BOSAppeal](https://sfmta.com/BOSAppeal).

This public comment period constitutes a public hearing per San Francisco Transportation Code Division I, Section 101

PUBLIC COMMENT PERIOD FOR CURB ZONE CHANGES

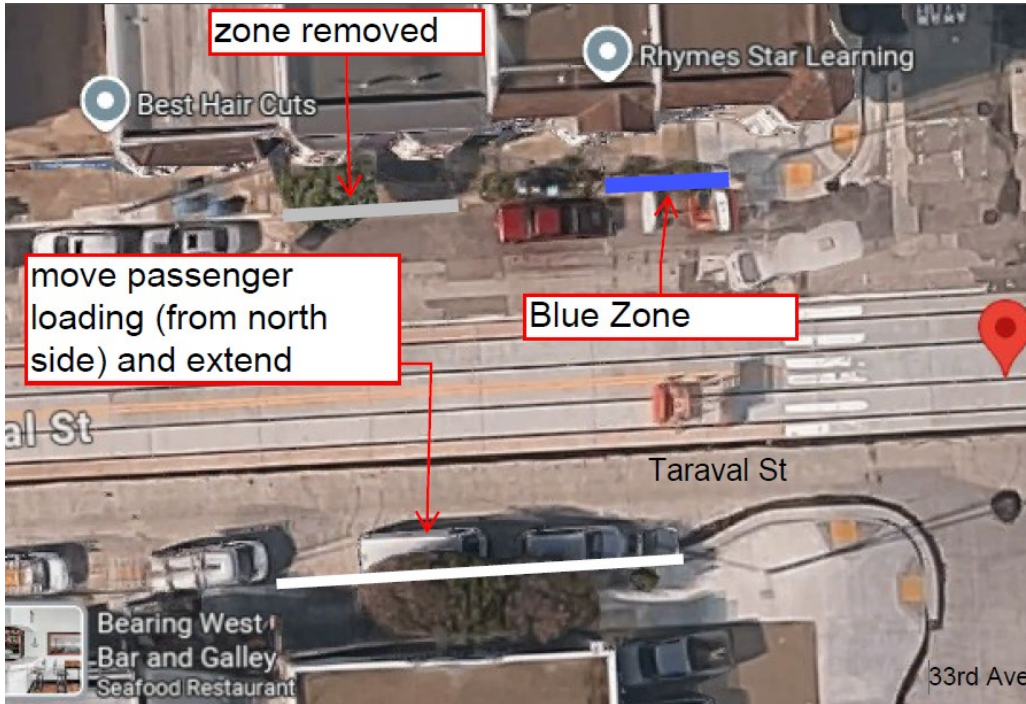
January 20 to 30, 2026

Cambios Propuestos en la Calle | 街道改變建議 | Ipinanukalang pagbabago sa kalsada



SFMTA

Item #16



A health care clinic and newly constructed pharmacy are consolidating their passenger loading and removing their zone on the north side of Taraval Street and placing it on the south side of Taraval Street to serve patients. The zone on the north side would be converted back to general parking, and a new accessible parking space would be added on the north side for customers and neighbors on the block with limited mobility.

Taraval Street between 33rd Avenue and 34th Avenue – Relocating and Extending a Passenger Loading Zone and Establishing Accessible Parking

RESCIND – WHITE ZONE, PASSENGER LOADING, 5-MINUTE LIMIT, 8:30AM TO 5PM, MONDAY THROUGH FRIDAY, AND 9AM TO 4PM, SATURDAY

2308 Taraval Street, north side, from 51 feet to 81 feet west of 33rd Avenue (30-foot zone).

ESTABLISH – WHITE ZONE, PASSENGER LOADING, 5-MINUTE LIMIT, 8AM TO 6PM, MONDAY THROUGH SATURDAY

2311 Taraval Street, south side, from 23 feet to 83 feet west of 33rd Avenue (60-foot zone)

ESTABLISH – BLUE ZONE, ACCESSIBLE PARKING, AT ALL TIMES

2300 Taraval Street, north side, from 33rd Avenue to 24 feet westerly (24-foot zone), Parkside, Supervisor District 4, Curb Access Program, ccp@sfmta.com.11.5

**Submit a comment on this item by 5pm on the last day of this 10-day noticing period:
January 20 to 30, 2026**

Online comments: Fill out form here [SFMTA.com/CurbZoneCommentForm](https://sfmta.com/CurbZoneCommentForm)

By phone: Call (415) 646-2599 leave voicemail, specify item number

By mail/drop-off: Curb Zone Changes, Public Noticing, SFMTA Streets Division,
One South Ness Avenue, 7th Floor, San Francisco, CA 94103-5417



[QR Code]
[SFMTA.com/CurbZoneChanges](https://sfmta.com/CurbZoneChanges)

At the end of the comment period, all feedback received will be reviewed by staff. Based on this feedback a recommendation to either approve, amend, or withdraw an item will be provided to the City Traffic Engineer who has the authority to make the final decision.

Results posted by 5 pm five business days after the end of each public comment period at:
[SFMTA.com/CurbZoneChanges](https://sfmta.com/CurbZoneChanges)

Final SFMTA Decisions involving certain parking or traffic modifications, whether made by the City Traffic Engineer or the SFMTA Board, can be reviewed by the Board of Supervisors pursuant to [Ordinance 127-18](#). Information about the review process can be found at [SFMTA.com/BOSAppeal](https://sfmta.com/BOSAppeal).

This public comment period constitutes a public hearing per San Francisco Transportation Code Division I, Section 101

PUBLIC COMMENT PERIOD FOR CURB ZONE CHANGES

January 20 to 30, 2026

Cambios Propuestos en la Calle | 街道改變建議 | Ipinanukalang pagbabago sa kalsada



SFMTA

Item #17



A daycare with an existing passenger loading zone has requested to adapt the hours of the zone to better align with their pickup and drop off hours.

Holloway Avenue between Granada Avenue and Miramar Avenue – Changing the Operating Hours for an Existing Passenger Loading Zone

RESCIND – WHITE ZONE, ACCESSIBLE PASSENGER LOADING, 5-MINUTE LIMIT, 8AM TO 10AM AND 4PM TO 6PM, MONDAY THROUGH FRIDAY

ESTABLISH – WHITE ZONE, ACCESSIBLE PASSENGER LOADING, 5-MINUTE LIMIT, 7:30AM TO 10:30AM AND 2:30PM TO 6:30PM, MONDAY THROUGH FRIDAY

“400” Holloway Avenue, north side, from 4 feet to 44 feet west of Granada Avenue (40-foot zone), Ocean View, Supervisor District 11, Curb Access Program, ccp@sfmta.com.

**Submit a comment on this item by 5pm on the last day of this 10-day noticing period:
January 20 to 30, 2026**

Online comments: Fill out form here [SFMTA.com/CurbZoneCommentForm](https://sfmta.com/CurbZoneCommentForm)

By phone: Call (415) 646-2599 leave voicemail, specify item number

By mail/drop-off: Curb Zone Changes, Public Noticing, SFMTA Streets Division,
One South Ness Avenue, 7th Floor, San Francisco, CA 94103-5417



[QR Code]
[SFMTA.com/CurbZoneChanges](https://sfmta.com/CurbZoneChanges)

At the end of the comment period, all feedback received will be reviewed by staff. Based on this feedback a recommendation to either approve, amend, or withdraw an item will be provided to the City Traffic Engineer who has the authority to make the final decision.

Results posted by 5 pm five business days after the end of each public comment period at:
[SFMTA.com/CurbZoneChanges](https://sfmta.com/CurbZoneChanges)

Final SFMTA Decisions involving certain parking or traffic modifications, whether made by the City Traffic Engineer or the SFMTA Board, can be reviewed by the Board of Supervisors pursuant to [Ordinance 127-18](#). Information about the review process can be found at [SFMTA.com/BOSAppeal](https://sfmta.com/BOSAppeal).

This public comment period constitutes a public hearing per San Francisco Transportation Code Division I, Section 101