

## **SFMTA - TASC SUMMARY SHEET**

<b>PreStaff_Date:</b> 5/3/2022 <b>Requested_by:</b> SFMTA <b>Handled:</b> Edgar Orozco ㄨㄨ <b>Section Head :</b> C.Liu/B.Tanner BT	<input type="checkbox"/> <b>Public Hearing Consent</b> <input checked="" type="checkbox"/> <b>Public Hearing Regular</b> <input type="checkbox"/> <b>Informational / Other</b> <small>PH - Regular</small>	<b>No objections:</b> _____ <b>Item Held:</b> _____ <b>Other:</b> _____
--	---	---

**Location:** Spear Street between Mission Street and Market Street

**Subject:** Two-Way Conversion

**PROPOSAL / REQUEST:**

Please refer to the following page for legislative details.

**BACKGROUND INFORMATION / COMMENTS**

\*This is follow-up legislation for directive number 6528, which converted 45-degree parking stalls into 30-degree parking stalls on Spear Street between Mission and Market Streets.

\*As a part of Better Market Street quick build, Spear Street between Mission and Markets Streets was converted from one-way to two-way on April 26, 2022. Legislation for these changes was done in Fall 2019.

\*The project team changed the original parking stalls from 45 to 30 degrees as well as the direction of the parking stalls (since the roadway was converted to two-way). The changes help to accommodate turns made by Muni buses from Market Street and have the southbound overhead wires within the traffic lane.

\*The directive resulted in the removal of seven additional parking/loading spaces.

**HEARING NOTIFICATION AND PROCESSING NOTES:**

**ENVIRONMENTAL CLEARANCE BY:**

SFMTA    Attached    Pending

**CHECK IF PREPARING SEPARATE SFMTA BOARD CALENDAR ITEM FOR PROPOSAL:**

**ESTABLISH – RED ZONE**

Spear Street, east side, from 200 feet to 209 feet south of Market Street (extends an existing red zone by 9 feet)

Spear Street, east side, from 520 feet to 540 feet south of Market Street (extends an existing red zone by 20 feet)

**ESTABLISH – BLUE ZONE**

Spear Street, east side, from 13 feet to 30 feet south of Market Street

**ESTABLISH – 30 DEGREE ANGLED 6 WHEEL COMMERCIAL LOADING ZONE MONDAY-FRIDAY 7AM-11AM**

Spear Street, east side, from 98 feet to 200 feet south of Market Street (meters #11, #13, #15, #17, #19, and #21)

Spear Street, east side, from 401 feet to 486 feet south of Market Street (meters #71, #73, #75, #77, and #79)

**ESTABLISH – 30 DEGREE ANGLED YELLOW METER LOADING ZONE MONDAY-FRIDAY 7AM-11AM**

Spear Street, east side, from 30 feet to 98 feet south of Market Street (meters #3, #5, #7, and #9)

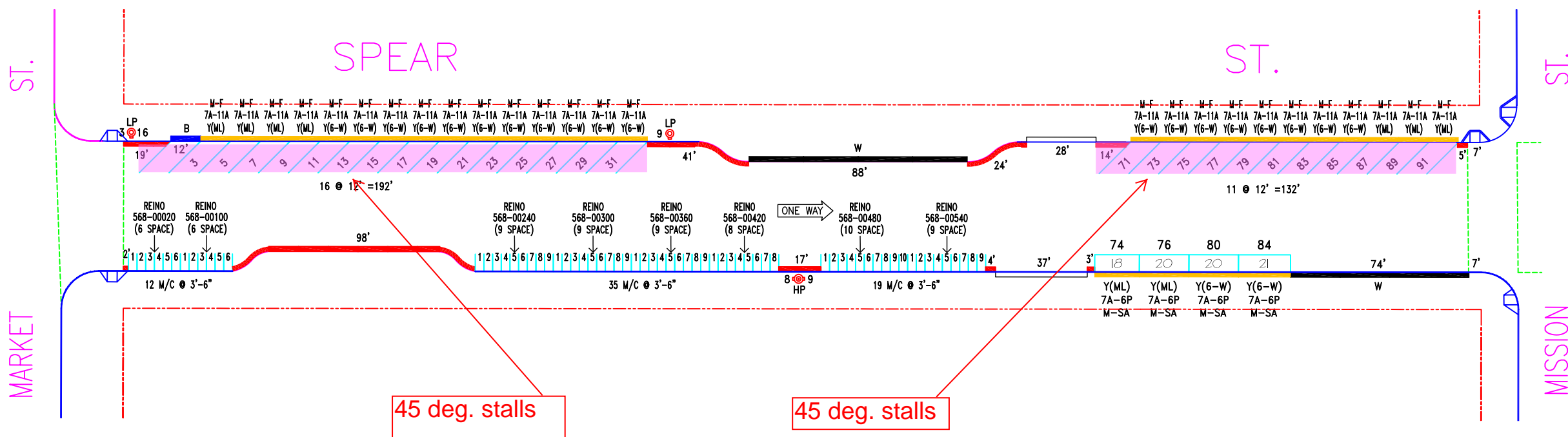
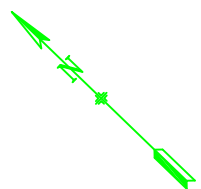
Spear Street, east side, from 486 feet to 520 feet south of Market Street (meters #81 and #83)

(Supervisor District 6)

This is follow-up legislation for directive number 6528 related to a two-way conversion of Spear Street between Mission Street and Market Street, which required a change in direction and angle of the loading zones.

Edgar Orozco, [edgar.orozco@sfmta.com](mailto:edgar.orozco@sfmta.com)

# Previous Curb and Meter Layout (before 4/26/22)



45 deg. stalls

NO.	REVISION DESCRIPTION	BY	DATE	DIR/RES	3	Updated with new CAD dwg.	JB	6/20/14
1	1 Hour time limit	BW	8/20/07					
2	Revoke Blue zone, Establish ML#174	JB	9/23/10	10-106				

**SAN FRANCISCO MUNICIPAL TRANSPORTATION AGENCY**  
**CITY AND COUNTY OF SAN FRANCISCO**  
 PARKING METER SPACES

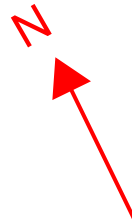
SIDE	TOW-AWAY		METER CT.		GENERAL				LOADING		METERED SPACES							TOTAL
	AM	PM	SS	MS	GMP	MC	TIMES	DAYS	ML	MTL	6-W	15 MIN	30 MIN	1 HR	2 HR	10 HR		
ODD			26				7A-6P	M-SA	7		19				26		26	
EVEN			4	8	66		7A-6P	M-SA	2		2				4	65	70	

**SPEAR ST. (SPR, 658)**  
**(UNIT) BLOCK**  
 Meters # 658-00XXY

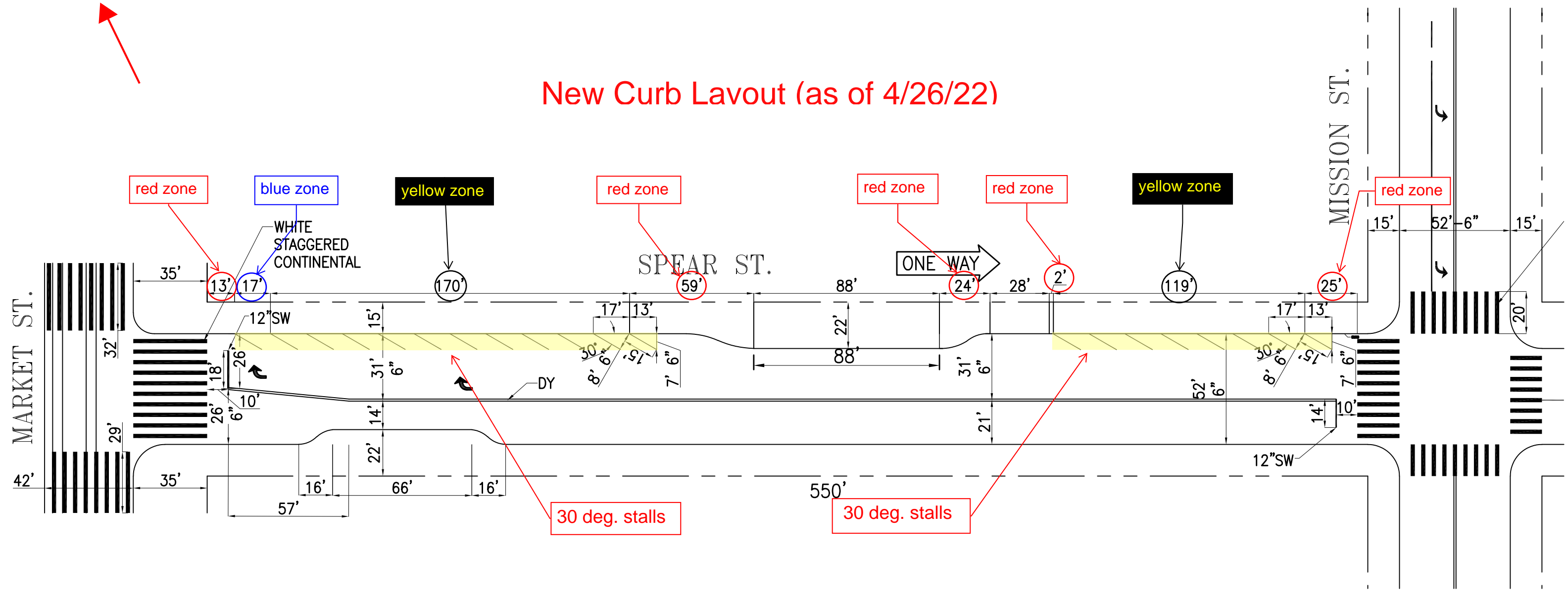
**MARKET ST. TO MISSION ST.**

SCALE: **1" = 50'**      DATE: **6/19/14**      BY: **JB**

AREA  
1



### New Curb Lavout (as of 4/26/22)





CITY and COUNTY of SAN FRANCISCO  
MUNICIPAL TRANSPORTATION AGENCY

ORDER NO. 6528

STREETS DIVISION DIRECTIVE

The following changes are implemented under Section 201.a.5 of the San Francisco Transportation Code:

**ESTABLISH – RED ZONE**

Spear Street, east side, from 200 feet to 209 feet south of Market Street (extends an existing red zone by 9 feet)

Spear Street, east side, from 520 feet to 540 feet south of Market Street (extends an existing red zone by 20 feet)

**ESTABLISH – BLUE ZONE**

Spear Street, east side, from 13 feet to 30 feet south of Market Street

**ESTABLISH – 30 DEGREE ANGLED 6 WHEEL COMMERCIAL LOADING ZONE  
MONDAY-FRIDAY 7AM-11AM**

Spear Street, east side, from 98 feet to 200 feet south of Market Street (meters #11, #13, #15, #17, #19, and #21)

Spear Street, east side, from 401 feet to 486 feet south of Market Street (meters #71, #73, #75, #77, and #79)

**ESTABLISH – 30 DEGREE ANGLED YELLOW METER LOADING ZONE MONDAY-FRIDAY 7AM-11AM**

Spear Street, east side, from 30 feet to 98 feet south of Market Street (meters #3, #5, #7, and #9)

Spear Street, east side, from 486 feet to 520 feet south of Market Street (meters #81 and #83)

These are changes related to a two-way conversion of Spear Street between Mission Street and Market Street, which requires a change in direction and angle of the loading zones.

Approved:

*R Olea*

\_\_\_\_\_  
Ricardo Olea  
City Traffic Engineer

cc: Directive File

BT KK  
RO:BT:KK:eo  
ISSUED: 4/13/2022

# Muni Map - Zoom View

