

SFMTA - TASC SUMMARY SHEET

<p>PreStaff_Date: 4/1/2025</p> <p>Requested_by: SFPW-BSM</p> <p>Handled: Edward Tang, 646-2064</p> <p>Section Head : <i>[Signature]</i></p>	<p><input type="checkbox"/> Public Hearing Consent</p> <p><input checked="" type="checkbox"/> Public Hearing Regular</p> <p><input type="checkbox"/> Informational / Other PH - Consent</p>	<p>No objections: _____</p> <p>Item Held: _____</p> <p>Other: _____</p>
<p>Location: Connecticut Street between Cesar Chavez and 26th Street</p>		
<p>Subject: Parallel Parking</p>		
<p>PROPOSAL / REQUEST: RESCIND – PERPENDICULAR PARKING ESTABLISH – PARALLEL PARKING Connecticut Street, west side, from 129 feet to 165 feet south of 26th Street (Supervisor District 10)</p> <p>Proposal to convert perpendicular parking to parallel parking due to sidewalk construction at 1920 Cesar Chavez.</p> <p>This item was previously heard at the May 2, 2025 Engineering Public Hearing and has been revised to shorten the length of the perpendicular to parallel parking conversion due to opposition at that hearing. SFFD concurred with the shorter length, and this proposal is being brought back to the June 6, 2025 Engineering Public Hearing.</p> <p>Edward Tang, edward.tang@sfmta.com</p>		
<p>BACKGROUND INFORMATION / COMMENTS</p> <p>As part of the 1920 Cesar Chavez Street project, the asphalt pedestrian path on Connecticut Street between Cesar Chavez and 26th Street was improved to a concrete sidewalk with widths ranging from 10 to 20 feet. Prior to sidewalk construction, vehicles were informally parking at 90 degrees on top of the asphalt. The proposal includes converting perpendicular parking to parallel in order to provide enough clear roadway width for emergency response vehicles.</p> <p>19 Polk Muni route runs on Connecticut Street.</p>		
<p>HEARING NOTIFICATION AND PROCESSING NOTES:</p>		<p>ENVIRONMENTAL CLEARANCE BY: <input checked="" type="checkbox"/> SFMTA <input type="checkbox"/> Attached <input type="checkbox"/> Pending</p>

Tang, Edward

From: Woo, Bryant
Sent: Thursday, May 8, 2025 5:19 PM
To: Lam, Alvin; Olea, Ricardo; Tang, Edward
Cc: Tsui, Eddie; Wong, Norman
Subject: RE: Results of the 5/2 Public Hearing

Road narrows midblock, hence the transition from perpendicular to parallel somewhere in that transition. The original proposal was make the transition at a driveway, but that would've resulted in ever greater parking loss.

I've advised my team to include a 3' RZ as a buffer from parallel to perpendicular.

Bryant

From: Lam, Alvin <Alvin.Lam@sfmta.com>
Sent: Thursday, May 8, 2025 10:46 AM
To: Olea, Ricardo <Ricardo.Olea@sfmta.com>; Tang, Edward <Edward.Tang@sfmta.com>
Cc: Tsui, Eddie <Eddie.Tsui@sfmta.com>; Wong, Norman <Norman.Wong@sfmta.com>; Woo, Bryant <Bryant.Woo@sfmta.com>
Subject: RE: Results of the 5/2 Public Hearing

Yes and we've seen it particularly on Harrison btwn 24th and 25th, but that was also related to repaving / restoration.

Alvin

From: Olea, Ricardo <Ricardo.Olea@sfmta.com>
Sent: Thursday, May 8, 2025 10:44 AM
To: Tang, Edward <Edward.Tang@sfmta.com>; Lam, Alvin <Alvin.Lam@sfmta.com>
Cc: Tsui, Eddie <Eddie.Tsui@sfmta.com>; Wong, Norman <Norman.Wong@sfmta.com>; Woo, Bryant <Bryant.Woo@sfmta.com>
Subject: RE: Results of the 5/2 Public Hearing

As we've been discussed on the side with Alvin, we can have enforcement problems with locations that have a wide mix of parallel and perpendicular parking next to each other. How does this work specifically? It is hard to park parallel next to a perpendicularly parked car. Is there a buffer in the middle? Do we need to mark stalls?

I'm not understanding what problem we are solving for but given we are making significant modifications based on non trivial opposition maybe it should go back to hearing with a note "Item will be brought back to a future PH with a modification in the proposal."



From: Tang, Edward <Edward.Tang@sfmta.com>
Sent: Thursday, May 8, 2025 9:26 AM
To: Olea, Ricardo <Ricardo.Olea@sfmta.com>
Cc: Lam, Alvin <Alvin.Lam@sfmta.com>; Tsui, Eddie <Eddie.Tsui@sfmta.com>; Wong, Norman <Norman.Wong@sfmta.com>; Woo, Bryant <Bryant.Woo@sfmta.com>
Subject: RE: Results of the 5/2 Public Hearing

Hi Ricardo,

After further internal discussion and coordination with SFFD, our recommendation for item #8 is to reduce the proposed perpendicular to parallel parking conversion length by 30 feet. This proposal would retain additional parking capacity (net loss of approx. 2 spaces instead of 4) for the street and is acceptable to SFFD per the attached email.

If we need to submit a corrected packet or other documentation, please let me know.

Old Proposal:

RESCIND – PERPENDICULAR PARKING
 ESTABLISH – PARALLEL PARKING
 Connecticut Street, west side, from 129 feet to 195 feet south of 26th Street

New Proposal:

RESCIND – PERPENDICULAR PARKING
 ESTABLISH – PARALLEL PARKING
 Connecticut Street, west side, from 129 feet to 165 feet south of 26th Street

Thanks,

Edward Tang
 Streets Division – Transportation Engineering



Office 415.646.2064

San Francisco Municipal Transportation Agency
1 South Van Ness Avenue, 7th floor
San Francisco, CA 94103



From: Tsui, Eddie <Eddie.Tsui@sfmta.com>

Sent: Friday, May 2, 2025 5:10 PM

To: Olea, Ricardo <Ricardo.Olea@sfmta.com>; Lam, Alvin <Alvin.Lam@sfmta.com>; Hernandez, Juan <Juan.Hernandez@sfmta.com>; Garcia, Peter <Peter.Garcia@sfmta.com>; Thornley, Andy <Andy.Thornley@sfmta.com>; Tang, Edward <Edward.Tang@sfmta.com>; Sallaberry, Mike <Mike.Sallaberry@sfmta.com>

Cc: Shariati, Shahram <Shahram.Shariati@sfmta.com>

Subject: Results of the 5/2 Public Hearing

Please find attached the draft directive showing the tentative results of our 5/2 public hearing. If interested, public comment emails can be found [here](#) and the Teams recording [here](#).

Item #8, converting perpendicular parking to parallel parking on Connecticut north of Cesar Chavez, was the most controversial in writing. We received 7 emails in opposition citing loss of parking and Barry Taranto spoke during the hearing with similar concerns. No email or testimony in support. However, since this item was proposed to satisfy SFFD requirements, I still put "Approved by CTE to forward to MTAB for final approval" as the tentative decision, but I defer to Edward and team to provide Ricardo with the final recommendation.

If anyone would like to make any changes, please let me know by noon Thursday so that we can post the results on our website by Friday's deadline.

Thanks,

Eddie

Tang, Edward

From: O'Keeffe, Tracy (FIR) <tracy.okeeffe@sfgov.org>
Sent: Wednesday, May 7, 2025 11:40 AM
To: Tang, Edward; Flores, Ramon (FIR)
Subject: Re: 1920 Cesar Chavez (Connecticut Parking)

Edward,

Captain Flores and I have completed our site visit at Connecticut Street and Cesar Chavez.

We have NO OBJECTIONS to the 3 north most parking spots remaining parallel.

We would like to reserve the right to revisit this design in the future should the overhead wires be converted to underground.

Thank you.

Captain Tracy O'Keeffe
Bureau of Fire Prevention
SFFD Headquarters
698 Second St.
San Francisco, CA 94107
(415) 558-3379
tracy.o'keeffe@sfgov.org

CONFIDENTIALITY NOTICE: This communication and its contents may contain confidential and/or legally privileged information. It is solely for the use of the intended recipient(s). Unauthorized interception, review, use or disclosure is prohibited and may violate applicable laws, including the Electronic Communications Privacy Act. If you are not the intended recipient, please contact the sender and destroy all copies of the communication.

From: Tang, Edward <Edward.Tang@sfmta.com>
Sent: Tuesday, May 6, 2025 2:33 PM
To: Flores, Ramon (FIR) <ramon.flores@sfgov.org>; O'Keeffe, Tracy (FIR) <tracy.okeeffe@sfgov.org>
Subject: 1920 Cesar Chavez (Connecticut Parking)

Hi Captain Flores, Captain O'Keeffe –

Thank you for meeting at office hours today. Can you please refer to the attached TASC packet and screenshot below during your drive-by to Connecticut Street this week? We are asking if we can leave the three 90-degree parking spaces in between the 51' and 58' red line measurements and converting everything north of that to parallel parking due to concerns from the community about parking loss.



Thanks,

Edward Tang
Streets Division – Transportation Engineering



Office 415.646.2064

San Francisco Municipal Transportation Agency
1 South Van Ness Avenue, 7th floor



1920 Cesar Chavez Project

The San Francisco Municipal Transportation Agency (SFMTA) proposes to convert perpendicular parking to parallel parking on the west side of Connecticut Street (129 to 195 feet south of 26th Street) in the vicinity of 1920 Cesar Chavez Street (Attachments 1 and 2). The change in parking would provide the minimum roadway width necessary for San Francisco Fire Department emergency response vehicles on Connecticut Street. The project also includes legislation to reflect widening of the adjacent sidewalk on Connecticut Street, from 10 feet to 20 feet (Attachments 2 and 3).

Conversion of perpendicular parking to parallel parking would be conducted by SFMTA Field Operations (Sign Shop) by installing "PARK AT 90 DEGREES" signs along the curb where the sidewalk has not been widened. Sidewalk repair and widening has already been installed as part of a Notice to Repair (NTR) issued by San Francisco Public Works to the adjacent business owner. However, the change to the official sidewalk width must be legislated to reflect the new width. Installation of parking signs would include excavation up to 18 inches in depth.

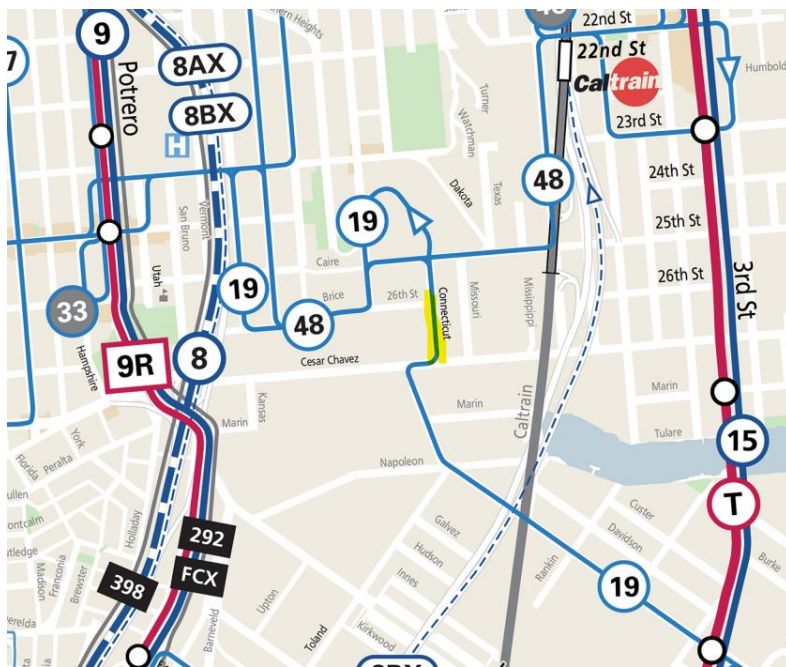
Approval Action: SFMTA Board Approval

Categorically Exempt pursuant to CEQA Guidelines Section 15301(c). No exceptions per CEQA Guidelines Section 15300.2.	
<i>Jenny Delumo</i>	12/2/2024 3/12/2025
Jenny Delumo, Environmental Review Team	Date
San Francisco Municipal Transportation Agency	

Attachment 1



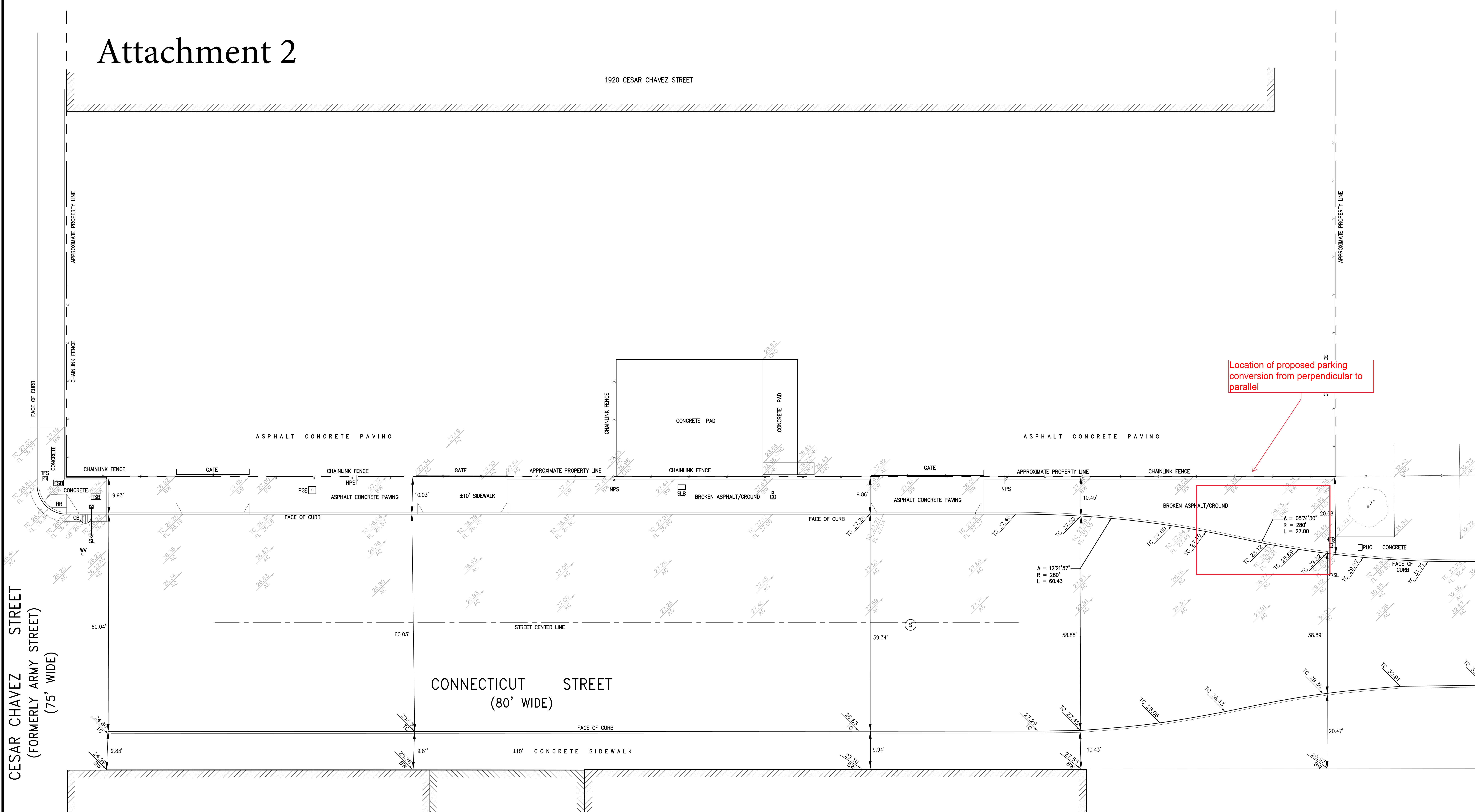
Proposed changes for parking conversion from perpendicular to parallel on Connecticut Street



Muni Network Map

Attachment 2

1920 CESAR CHAVEZ STREET



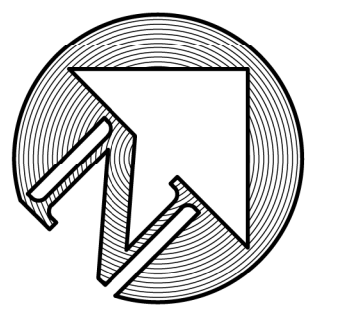
Location of proposed parking conversion from perpendicular to parallel

GENERAL NOTES:

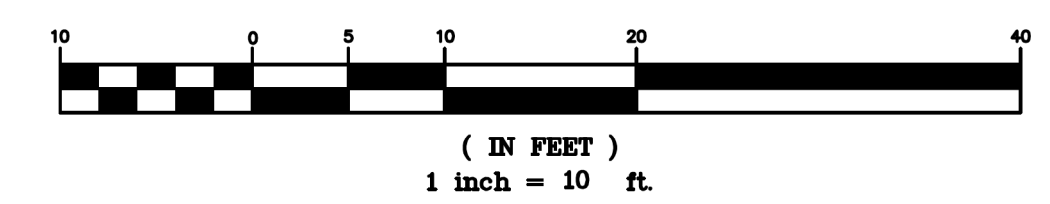
- ALL CONSTRUCTION TO BE UNDERTAKEN IN ACCORDANCE WITH THE CITY AND COUNTY OF SAN FRANCISCO STANDARD PLANS AND SPECIFICATIONS, WHICH ARE AVAILABLE ONE LINE AT WWW.SFPD.WORG IN THE PROJECTS - CONTRACTS & BID SECTION.
- IT WILL BE THE CONTRACTORS RESPONSIBILITY TO ROUTE THE PEDESTRIAN AND VEHICULAR TRAFFIC WITHIN THE CONSTRUCTION AREA.
- ELEVATIONS BASED ON SAN FRANCISCO CITY DATUM IN THE SOUTHWEST CORNER OF THE INTERSECTION OF CONNECTICUT AND CESAR CHAVEZ STREETS LETTER "O" IN "OPEN" TOP HPFS HYDRANT. ELEVATION = 28.795'.
- UTILITY INFORMATION BASED ON SURVEYED IMPROVEMENTS AND RECORD INFORMATION. DUE TO INHERENT UNCERTAINTIES IN LOCATING UNDERGROUND FACILITIES THIS INFORMATION CANNOT BE GUARANTEED TO BE COMPLETE, NOR CAN THE ACCURACY BE GUARANTEED. OTHER LIVE AND ABANDONED UTILITIES MAY EXIST IN SURVEY AREA BUT WERE NOT LOCATABLE. EXCAVATE WITH CAUTION. VERIFY LOCATIONS IN FIELD PRIOR TO DIGGING. CALL UNDERGROUND SERVICE ALERT PRIOR TO DIGGING AT 1-800-642-2444.
- MORATORIUM STREET: CONNECTICUT STREET IS UNDER MORATORIUM UNTIL 06/27/2021. IF THE STREET IS EXCAVATED OR DAMAGED, GRIND AND REPAVE TOP 2 INCHES OF AC PAVEMENT OF ALL EFFECTED LANES, 10FT IN EACH DIRECTION FROM THE EDGE OF THE EXCAVATED OR DAMAGED AREA, AND AS DIRECTED BY THE PUBLIC WORKS INSPECTOR.
- REPAIR REMAINING SUBJECT PROPERTY SIDEWALK FRONTAGE AS NEEDED AND DIRECTED BY THE PUBLIC WORKS INSPECTOR.
- NO WORK WITHIN THE ANGULAR RETURN. ANY WORK WITHIN THE ANGULAR RETURN WILL REQUIRE EVALUATION OF THE CURB RAMPS AND POSSIBLY REQUIRE INSTALLATION OR RECONSTRUCTION OF CURB RAMP(S) AT THE AFFECTED CORNER TO CURRENT STANDARDS BY THE PERMITTEE PER DPW ORDER NO.184350.
- NO NEW UTILITIES ARE PROPOSED TO BE CONSTRUCTED AS PART OF THIS PROJECT, WHICH IS BEING UNDERTAKEN AS A REQUIREMENT OF A NOTICE TO REPAIR SIDEWALK NO. 1073622.

ABBREVIATIONS:

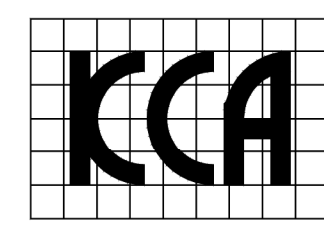
- 4"b 4" BOLLARD
- AC ASPHALT CONCRETE
- BW BACK OF WALK
- CB CATCH BASIN
- CNC CONCRETE
- CO CLEANOUTS
- FL FLOW LINE
- NPS NO PARKING SIGN
- PGE PG&E PULL BOX
- PUC SFPUC PULL BOX
- S SENIOR MANHOLE
- SL STREET LIGHT
- SLB STREET LIGHT PULL BOX
- TC TOP OF CURB
- TFS TRAFFIC SIGNAL
- TSP TRAFFIC SIGNAL PULL BOX
- WV WATER VALVE



GRAPHIC SCALE



KCA ENGINEERS, INC.
CONSULTING ENGINEERS • SURVEYORS • PLANNERS
318 BRANNAN ST. • SAN FRANCISCO, CA 94107 • (415) 546-7111 • FAX: (415) 546-9472
E-MAIL: mailbox@kcaengineers.com



APPROVED:	CAD FILE	DES. JH	CADD YL	03.10.21	ADDED TOPO
	LOCATION	CKD. JH	REV. PJB	01.04.21	CITY COMMENTS
APPROVED:	PLOT DATE	DATE	MAR. 2018	02.28.19	CITY COMMENTS
	DRAWING NO.	JOB NO.	6482	04.02.18	PRELIMINARY
		NO.	DATE	DESCRIPTION	

TOPOGRAPHIC SURVEY PLAN FOR
1920 CESAR CHAVEZ STREET
ASSESSOR'S BLOCK NO. 4324 ~ LOT 002
SAN FRANCISCO CALIFORNIA

SCALE:
HORIZ.: 1" = 10'
VERT.: _____
C1.1



Connecticut Street prior to sidewalk construction



Connecticut Street post sidewalk construction

From: [Flores, Ramon \(FIR\)](#)
To: [Do, Shannon \(DPW\)](#)
Cc: [Tang, Eleanor \(DPW\)](#); [Chong, Victoria](#)
Subject: RE: 1920 Cesar Chavez St | SF FIRE Referral
Date: Monday, August 14, 2023 2:43:37 PM
Attachments: [image016.png](#)
[image017.png](#)
[image018.png](#)
[image019.png](#)
[image020.png](#)
[image021.png](#)
[image022.png](#)
[image023.png](#)
[image027.png](#)

Good afternoon,

Thank you for bringing this to my attention. No, the parking in the red bubble would need to be converted.

Thank you,

Captain Ramon Flores

San Francisco Fire Department
Bureau of Fire Prevention & Investigation
698 2nd Street, Room 109
San Francisco, CA 94107
415-558-3375 (direct)
415-558-3300 (main)

From: Do, Shannon (DPW) <shannon.do@sfdpw.org>
Sent: Monday, August 14, 2023 11:01 AM
To: Flores, Ramon (FIR) <ramon.flores@sfgov.org>
Cc: Tang, Eleanor (DPW) <eleanor.tang@sfdpw.org>; Chong, Victoria (MTA) <Victoria.Chong@sfmta.com>
Subject: 1920 Cesar Chavez St | SF FIRE Referral

Hello Ramon,

Please find attached for your review, sidewalk plans for 1920 Cesar Chavez St. The scope of work is to reconstruct the sidewalk due to an NTR for damaged metal curb and sidewalk.

During BSM's review, a referral was sent to SFMTA who then requested confirmation from SF Fire to review the minimum roadway width. Please see Victoria's comment below regarding the concern of the roadway width at the pinch point. Please let us know your thoughts.

Respectfully,

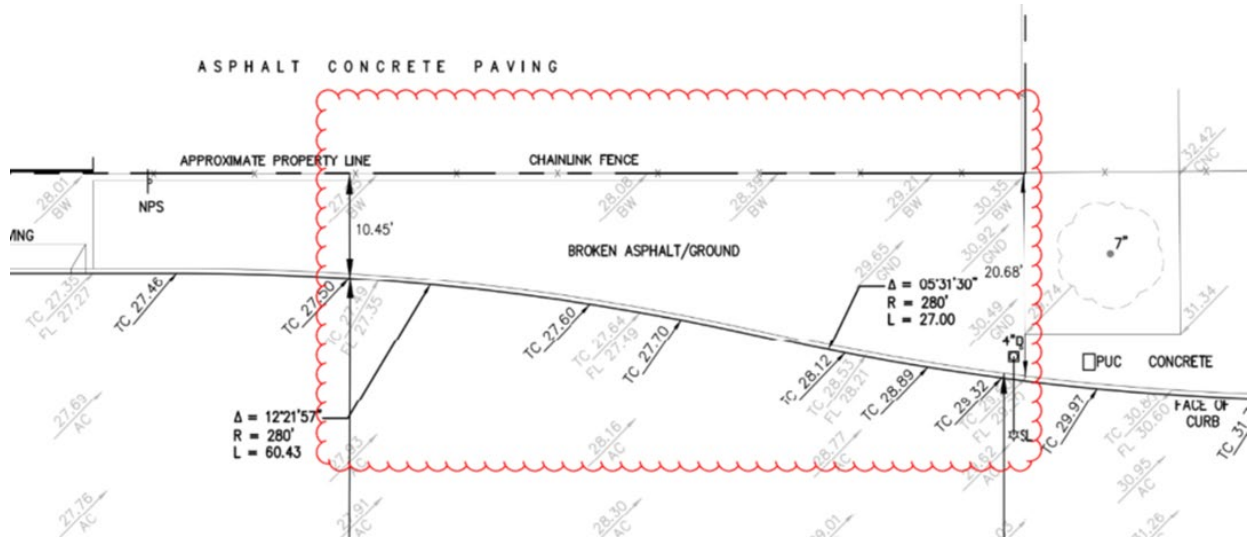
Shannon Do, E.I.T.
Junior Engineer
Bureau of Street Use & Mapping | San Francisco Public Works | City and County of San Francisco
49 South Van Ness Avenue, Suite 300 | SF, CA 94103 | Out of Office 7/15/2023 – 8/10/2023

From: Chong, Victoria <Victoria.Chong@sfmta.com>
Sent: Thursday, August 3, 2023 4:44 PM
To: Tang, Eleanor (DPW) <eleanor.tang@sfdpw.org>
Cc: Do, Shannon (DPW) <shannon.do@sfdpw.org>; Myles, Westley (MTA) <Westley.Myles@sfmta.com>; Wong, Norman (MTA) <Norman.Wong@sfmta.com>
Subject: RE: "Side" Meeting to Discuss Major Encroachment or other projects

Hi Eleanor, Hi Shannon –

Thanks for your patience. Please see below for the SFMTA's comments regarding 1920 Cesar Chavez.

- Connecticut Street: Please confirm that SF Fire has reviewed these plans and approve of the minimum roadway width in the red area below, where the sidewalk widens. If cars continue to park 90-degrees in the red area, this would result in vehicles protruding more into the roadway than existing conditions. If they need more clear width, we will need to legislate the parking to be converted from 90 degrees to parallel. Note: the 90-degree parking, south of this section, will work fine since the roadway is wider from the 10.45' dimension to Cesar Chavez.



Please let us know if you have any questions. Many thanks for your help.

-Victoria
 Victoria Chong (she/her)
 Transportation Planner
 Development & Transportation Integration | Streets Division
 Office: 415.646.2706



From: Tang, Eleanor (DPW) <eleanor.tang@sfdpw.org>
Sent: Tuesday, August 1, 2023 11:52 AM
To: Wong, Norman <Norman.Wong@sfmta.com>
Cc: Do, Shannon (DPW) <shannon.do@sfdpw.org>; Myles, Westley <Westley.Myles@sfmta.com>; Chong, Victoria <Victoria.Chong@sfmta.com>
Subject: Re: "Side" Meeting to Discuss Major Encroachment or other projects

EXT

Norman,

 Thank you for the update.

 Eleanor



Eleanor Tang,
 Associate Engineer, Permits Division