



# Central Embarcadero Safety Project

Draft Illustrated Plans (July 2025)

FOR MORE INFORMATION  
visit: [SFMTA.com/Embarcadero](https://www.sfmta.com/Embarcadero)

CONTACT US  
email: [Embarcadero@SFMTA.com](mailto:Embarcadero@SFMTA.com)

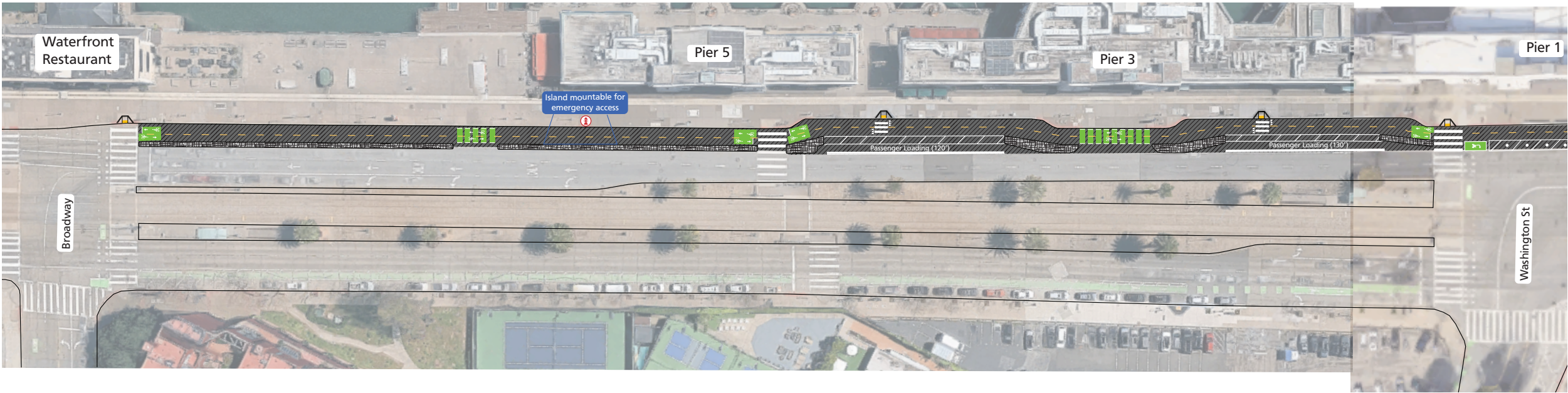
## Project Area Map and Cut Sheet Legend



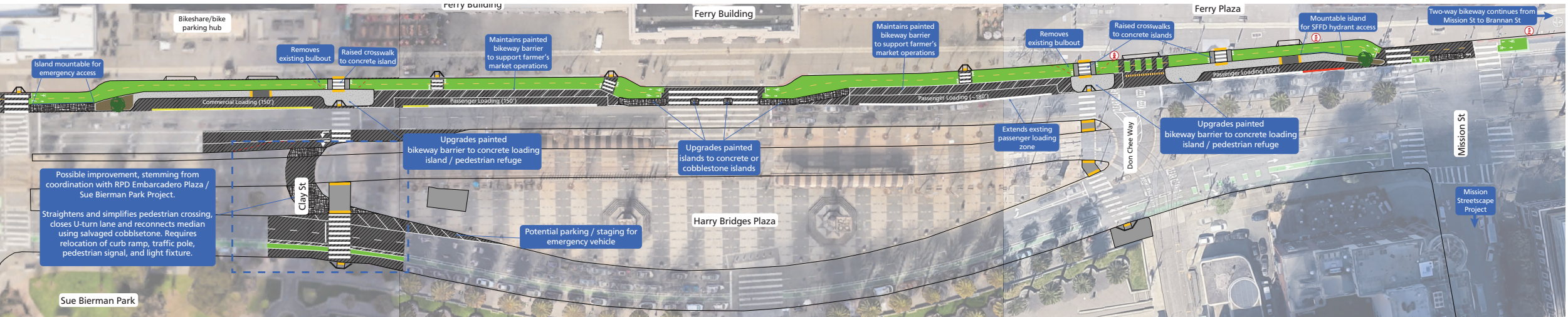
## Project Elements Legend

- Pedestrian-accessible concrete island
- Non-accessible concrete island
- Cobblestone island with new palm tree
- Green-painted bikeway
- Demolition of existing curb

Sheet 1: Broadway to Washington Street



Sheet 2: Washington Street to Mission Street







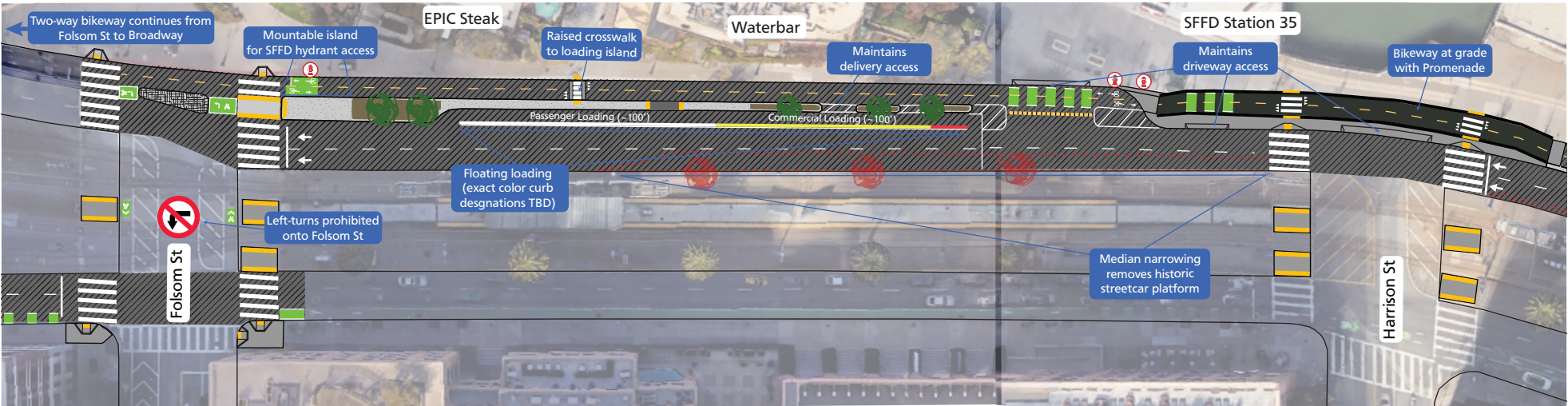
# Central Embarcadero Safety Project

Draft Illustrated Plans (July 2025)

FOR MORE INFORMATION  
visit: [SFMTA.com/Embarcadero](https://www.sfmta.com/Embarcadero)

CONTACT US  
email: [Embarcadero@SFMTA.com](mailto:Embarcadero@SFMTA.com)

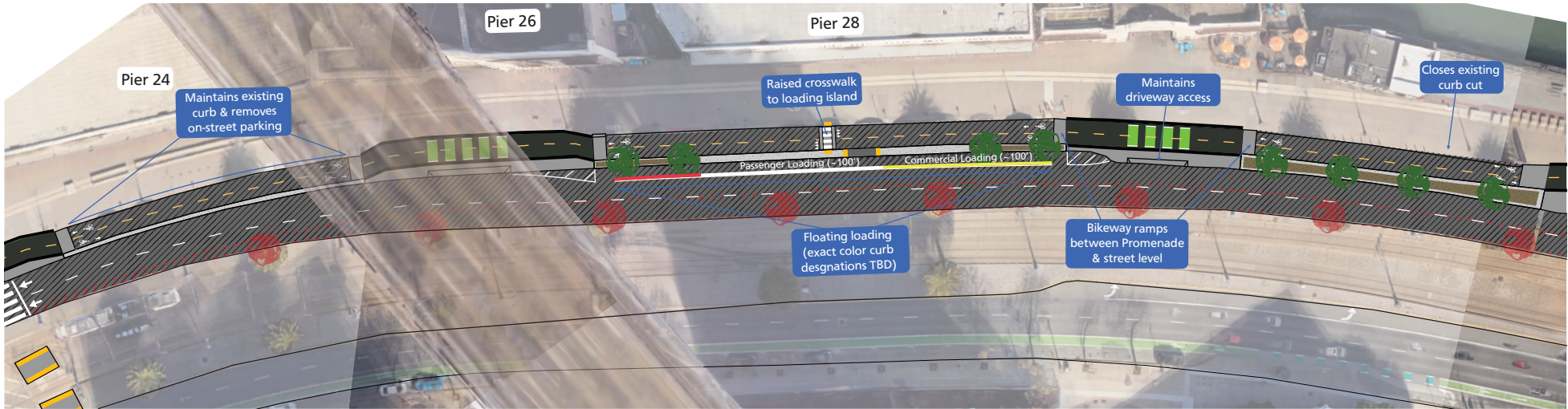
Sheet 3: Rincon Restaurant Zone (Folsom St to Harrison St)



Project Area Map and Cut Sheet Legend



Sheet 4: Piers 24-28 (Between Harrison St & Bryant St)



Project Elements Legend

- Modify sidewalk/edge of promenade
- Pedestrian-accessible concrete island
- Non-accessible concrete island
- Cobblestone island with new palm tree
- Demolition of existing sidewalk/median, and associated removal of palm trees
- Promenade-level bikeway with detectable warning strip
- Repave roadway

Sheet 5: Pier 30/32 (Bryant St to Brannan St)

