



SFMTA



# Clarendon Quick-Build Project

SFMTA Board of Directors  
November 18, 2025



# Clarendon Avenue Today

## Project Extents



36  
Teresita



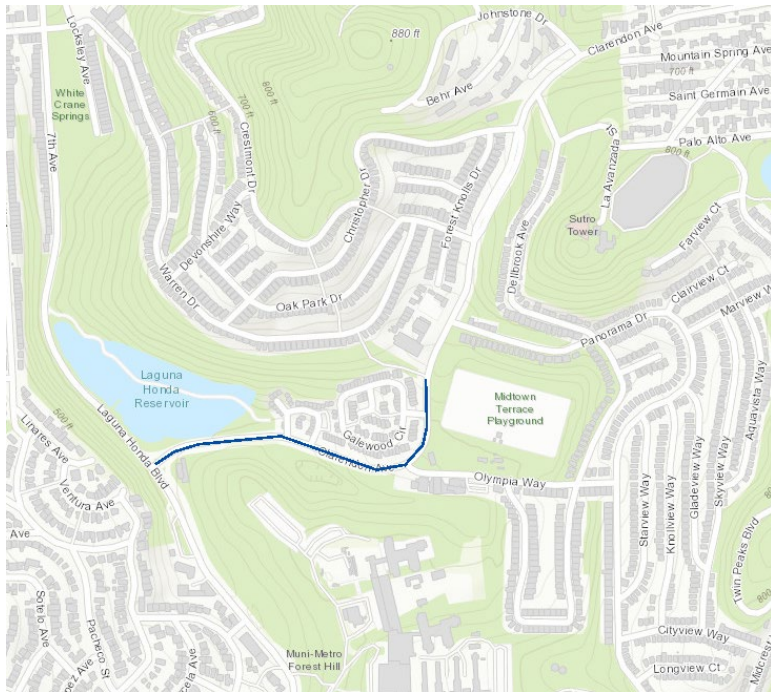
## Points of Interest:

- **Clarendon Alternative Elementary School**
- **Midtown Terrace Playground**
- **SF Fire Station #20**

# Safety Needs

Clarendon Avenue from Laguna Honda Boulevard to Ashwood Lane is part of San Francisco's High Injury Network, the 12% of streets that experience 68% of the city's severe traffic injuries and fatalities.

## High Injury Network



There were 7 injury related collisions (2018 to 2023) on Clarendon Avenue between Laguna Honda Boulevard and Johnstone Drive.

- 2 collisions resulted in severe injury
- The most frequent collision types was unsafe speeds representing 3 of the 7 collisions during this period
- 4 of the 7 collisions were in the westbound, downhill direction

# Community Outreach

- 4 stakeholder presentations
- Site walk with neighborhood groups and Sutro Tower management
- Collected feedback from Clarendon Alternative Elementary School staff, Parent Advisory Committee, and crossing guards
- Engaged with District 7 Supervisor Office, Midtown Terrace Homeowners Association, Twin Peaks Improvement Association, Woods of San Francisco Homeowners Association, Sutro Stewards, Forest Knolls Neighborhood Organization, West of Twin Peaks Central Council, advocacy groups
- Review and coordination with SF Fire Department and SF Public Works
- October 2025 Public Hearing

## What we heard:

Pedestrian safety is a priority

Concerns about traffic congestion

Concerns about parking loss

Request for protected bikeway



# Feedback: Protected Bikeway Request

*“While I support the goals of reducing speeds on Clarendon, and want to see this project move forward, I ask that you consider adding a bike lane to Clarendon as well.”*

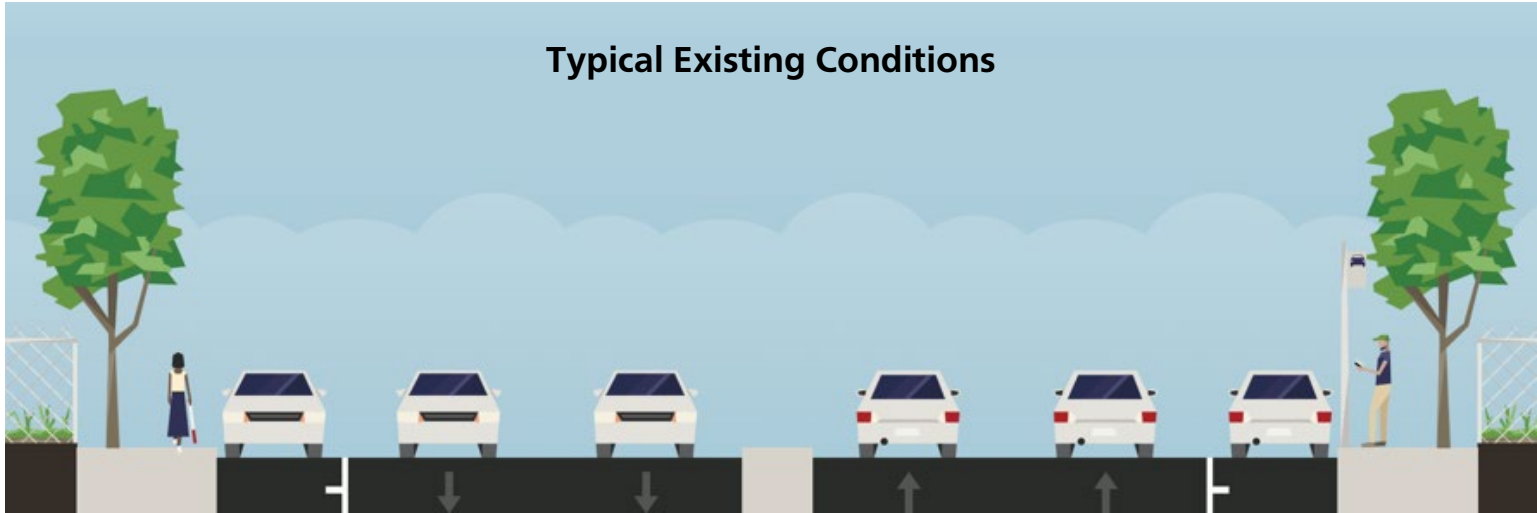
*– Public hearing comments*



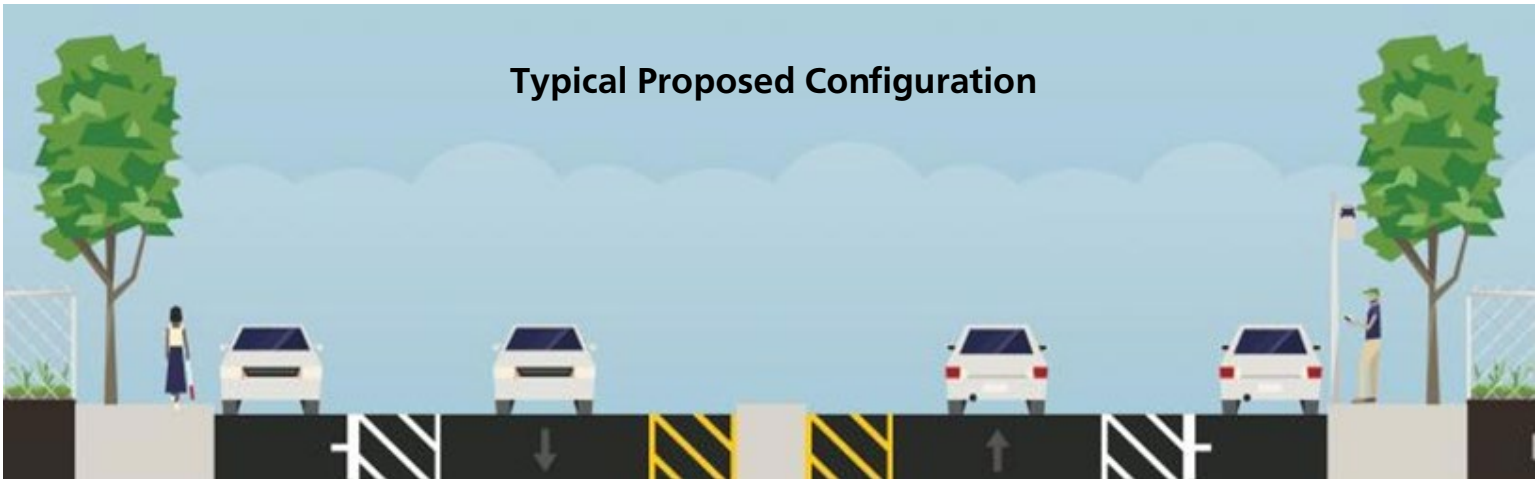
Clarendon Avenue at Dellbrook Avenue Eastbound

# Proposed Plan

Typical Existing Conditions



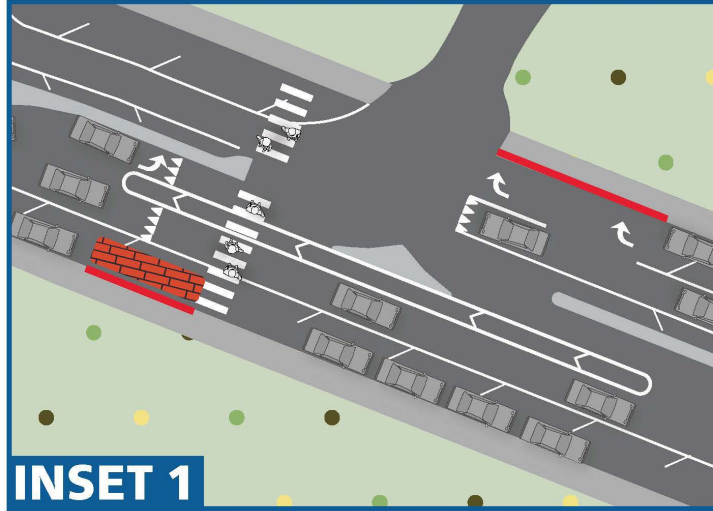
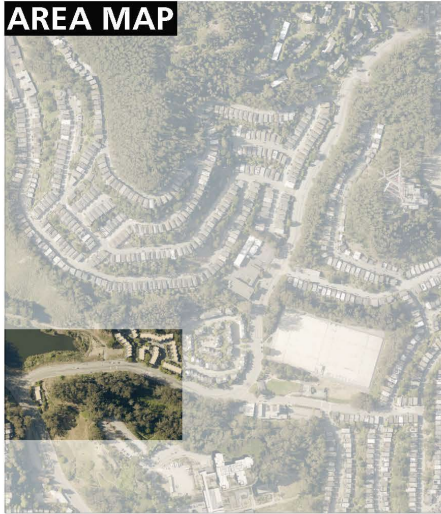
Typical Proposed Configuration



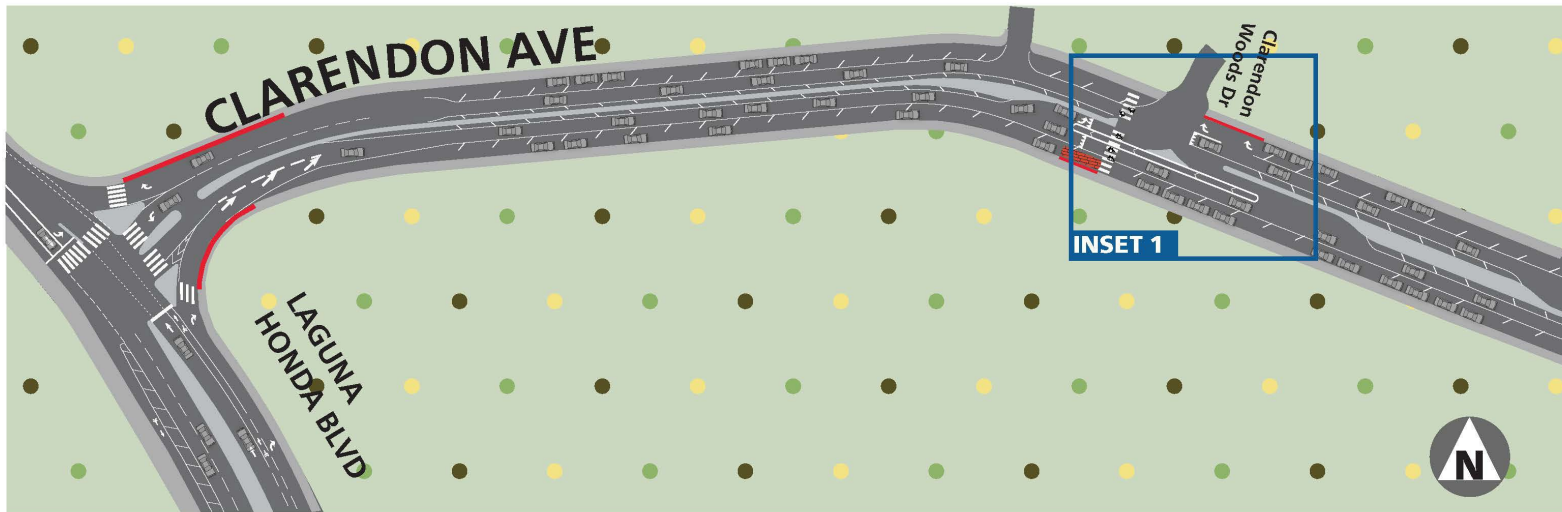
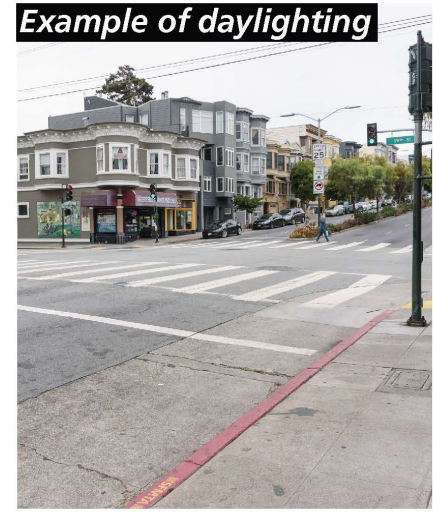


# Quick-Build Proposal

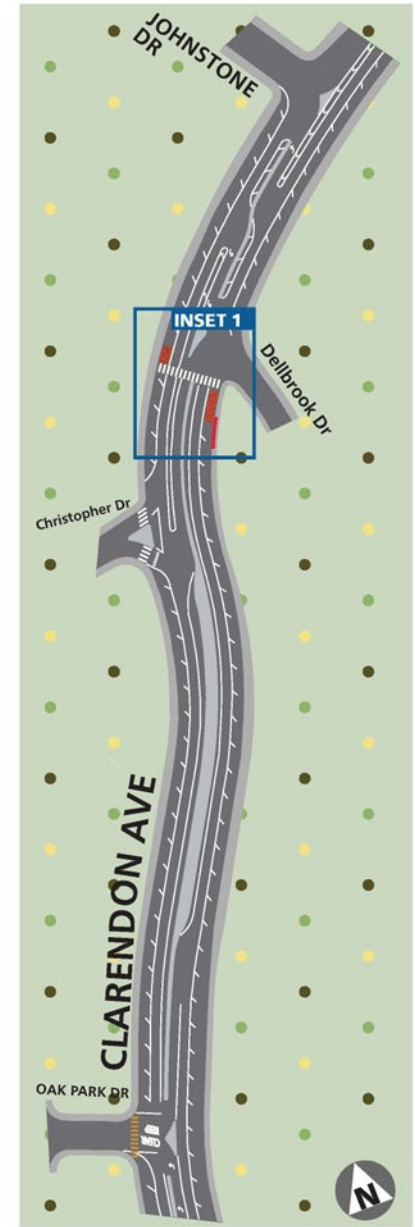
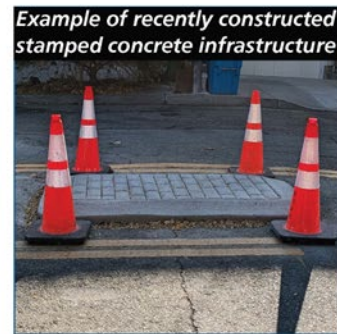
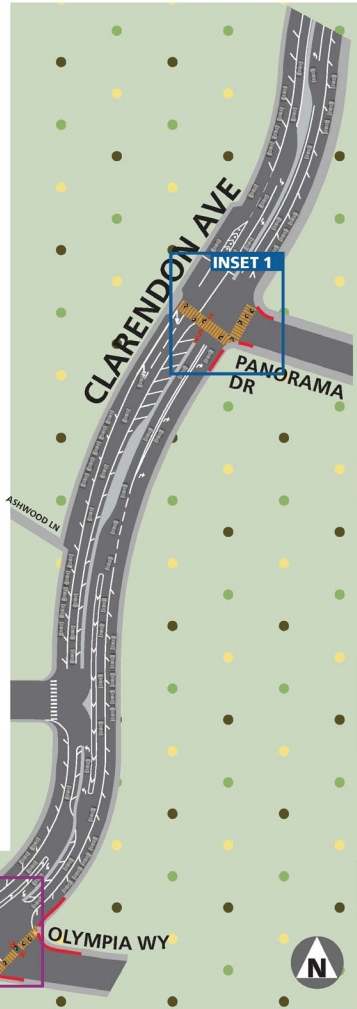
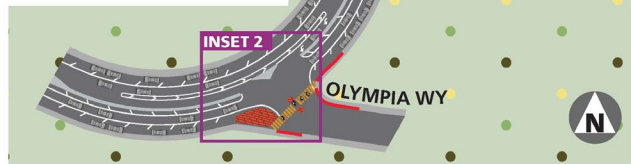
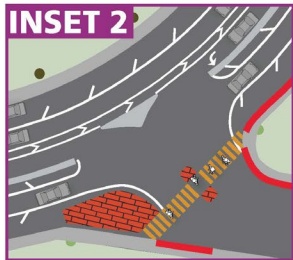
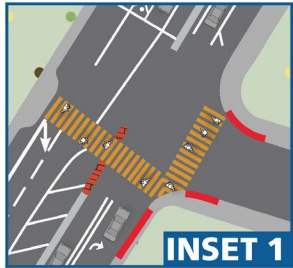
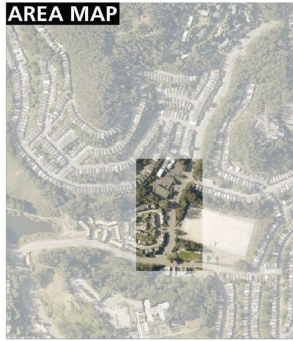
AREA MAP



Example of daylighting

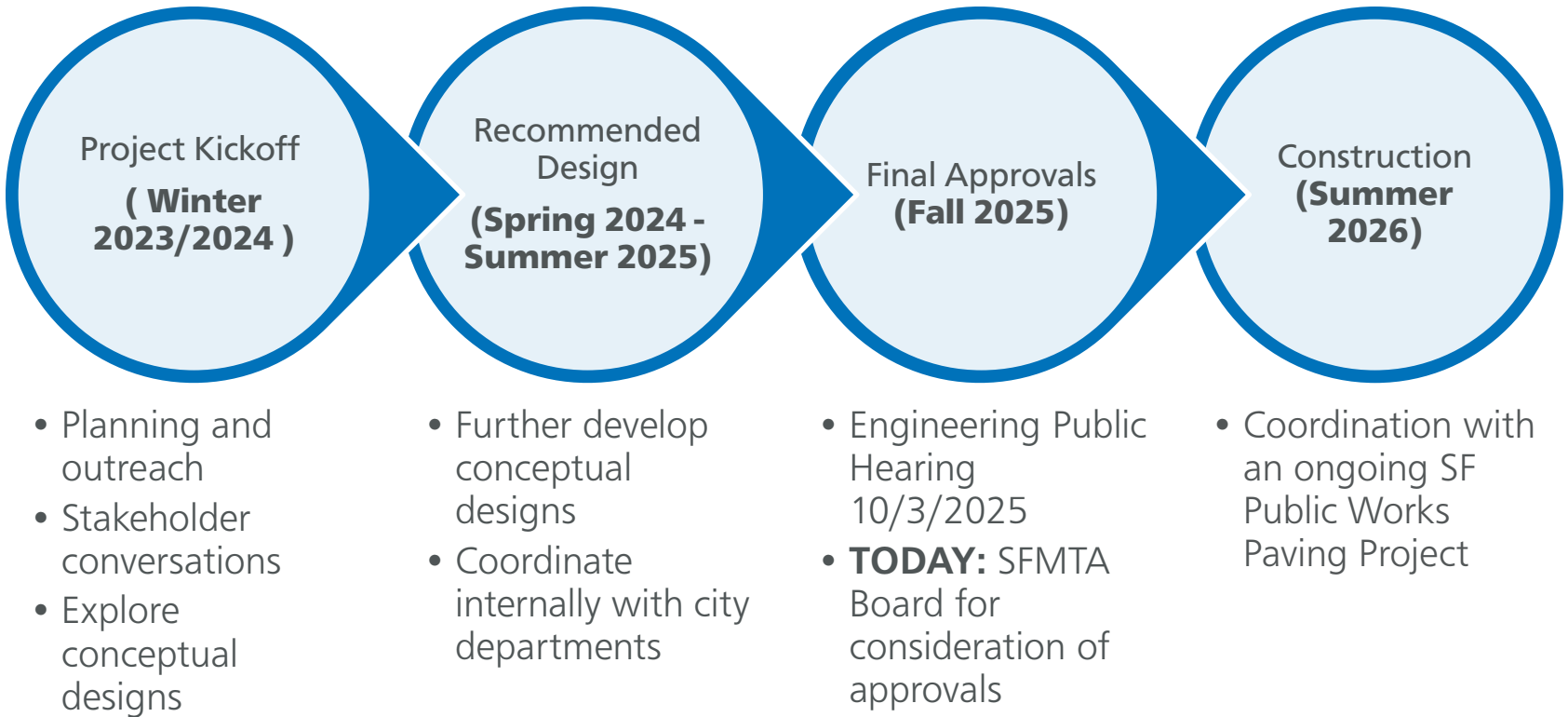


# Quick-Build Proposal





# Project Timeline





**SFMTA**

**Thank you!**

Contact the project team at: **[ClarendonQB@SFMTA.com](mailto:ClarendonQB@SFMTA.com)**

Visit the project website at: **[SFMTA.com/ClarendonQB](https://SFMTA.com/ClarendonQB)**