

PUBLIC COMMENT PERIOD FOR CURB ZONE CHANGES

April 21 to May 1 2026

Cambios Propuestos en la Calle | 街道改變建議 | Ipananukalang pagbabago sa kalsada



SFMTA

Item #1



Per the request of the sponsoring corner store, the approved but not yet installed general loading zone on Lombard would be lengthened and converted into a dual use zone to accommodate both commercial deliveries as well as customer pickups. The existing commercial loading zone would be removed from Buchanan Street to accommodate additional red curb for pedestrian visibility as required under AB413.

Lombard Street at Buchanan Street – Converting a General Loading Zone to a Dual Use Zone and Removing a Commercial Loading Zone for Daylighting

RESCIND – GENERAL LOADING ZONE, 5-MINUTE LIMIT, 9AM TO 8PM, DAILY

“1899” Lombard Street, south side, from 0 feet to 18 feet east of Buchanan Street (18-foot zone)

ESTABLISH – DUAL USE ZONE: YELLOW ZONE, COMMERCIAL LOADING, 30-MINUTE LIMIT, 8AM TO 3PM, MONDAY THROUGH SATURDAY; AND GENERAL LOADING ZONE, 5-MINUTE LIMIT, 3PM TO 8PM, MONDAY THROUGH SATURDAY AND 9AM TO 8PM SUNDAYS

“1899” Lombard Street, south side, from 0 feet to 35 feet east of Buchanan Street (35-foot zone)

RESCIND – YELLOW ZONE, COMMERCIAL LOADING, 30-MINUTE LIMIT, 8AM TO 6PM, MONDAY THROUGH SATURDAY

“3234” Buchanan Street, east side, from 15 feet to 42 feet south of Lombard Street (27-foot zone)

ESTABLISH – RED ZONE, NO STOPPING ANYTIME

“3234” Buchanan Street, east side, from 0 feet to 20 feet south of Lombard Street (20-foot zone), Marina, Supervisor District 2, Curb Access, ccp@sfmta.com.

**Submit a comment on this item by 5pm on the last day of this 10-day noticing period:
April 21 to May 1 2026**

Online comments: Fill out form here [SFMTA.com/CurbZoneCommentForm](https://sfmta.com/CurbZoneCommentForm)

By phone: Call (415) 646-2599 leave voicemail, specify item number

By mail/drop-off: Curb Zone Changes, Public Noticing, SFMTA Streets Division,
One South Ness Avenue, 7th Floor, San Francisco, CA 94103-5417



[QR Code]
[SFMTA.com/CurbZoneChanges](https://sfmta.com/CurbZoneChanges)

At the end of the comment period, all feedback received will be reviewed by staff. Based on this feedback a recommendation to either approve, amend, or withdraw an item will be provided to the City Traffic Engineer who has the authority to make the final decision.

Results posted by 5 pm five business days after the end of each public comment period at:
[SFMTA.com/CurbZoneChanges](https://sfmta.com/CurbZoneChanges)

Final SFMTA Decisions involving certain parking or traffic modifications, whether made by the City Traffic Engineer or the SFMTA Board, can be reviewed by the Board of Supervisors pursuant to [Ordinance 127-18](#). Information about the review process can be found at [SFMTA.com/BOSAppeal](https://sfmta.com/BOSAppeal).

This public comment period constitutes a public hearing per San Francisco Transportation Code Division I, Section 101

PUBLIC COMMENT PERIOD FOR CURB ZONE CHANGES

April 21 to May 1 2026

Cambios Propuestos en la Calle | 街道改變建議 | Ipananukalang pagbabago sa kalsada



SFMTA

Item #2



The proposed accessible passenger loading zone will support a new licensed medical and long-term care facility.

Sacramento Street between Webster Street and Buchanan Street – Establishing an Accessible Passenger Loading Zone

ESTABLISH – WHITE ZONE, ACCESSIBLE PASSENGER LOADING, 5-MINUTE LIMIT, 8AM TO 8PM, DAILY

2323 Sacramento Street, south side, from 183 feet (start of curb ramp) to 221 feet east of Webster Street (38-foot zone), Pacific Heights, Supervisor District 2, Broderick Paulo, broderick.paulo@sfmta.com.

**Submit a comment on this item by 5pm on the last day of this 10-day noticing period:
April 21 to May 1 2026**

Online comments: Fill out form here [SFMTA.com/CurbZoneCommentForm](https://sfmta.com/CurbZoneCommentForm)

By phone: Call (415) 646-2599 leave voicemail, specify item number

By mail/drop-off: Curb Zone Changes, Public Noticing, SFMTA Streets Division,
One South Ness Avenue, 7th Floor, San Francisco, CA 94103-5417



[QR Code]
[SFMTA.com/CurbZoneChanges](https://sfmta.com/CurbZoneChanges)

At the end of the comment period, all feedback received will be reviewed by staff. Based on this feedback a recommendation to either approve, amend, or withdraw an item will be provided to the City Traffic Engineer who has the authority to make the final decision.

Results posted by 5 pm five business days after the end of each public comment period at:
[SFMTA.com/CurbZoneChanges](https://sfmta.com/CurbZoneChanges)

Final SFMTA Decisions involving certain parking or traffic modifications, whether made by the City Traffic Engineer or the SFMTA Board, can be reviewed by the Board of Supervisors pursuant to [Ordinance 127-18](#). Information about the review process can be found at [SFMTA.com/BOSAppeal](https://sfmta.com/BOSAppeal).

This public comment period constitutes a public hearing per San Francisco Transportation Code Division I, Section 101

PUBLIC COMMENT PERIOD FOR CURB ZONE CHANGES

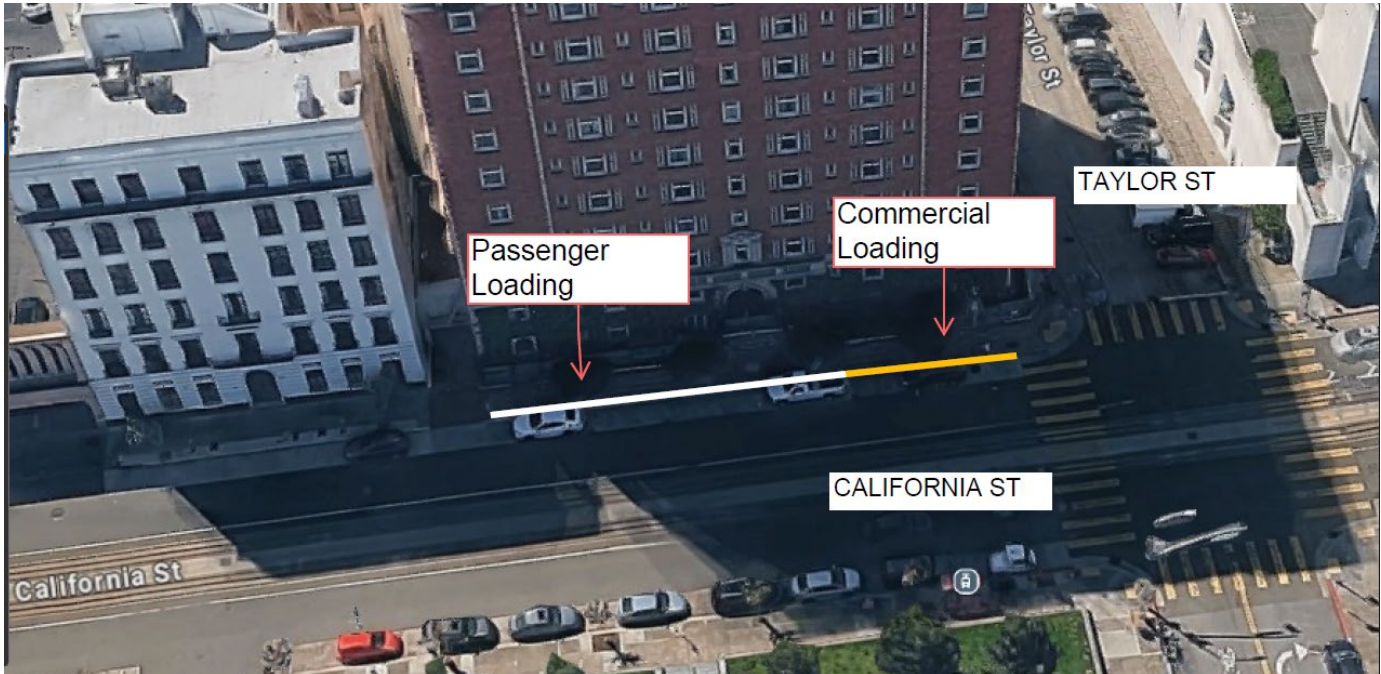
April 21 to May 1 2026

Cambios Propuestos en la Calle | 街道改變建議 | Ipinanukalang pagbabago sa kalsada



SFMTA

Item #3



A hotel has requested curbside access for passenger loading for guests as well as space for loading commercial goods during business hours.

California Street between Taylor Street and Mason Street – Establishing a Passenger Loading Zone and a Commercial Loading Zone

ESTABLISH – YELLOW ZONE, COMMERCIAL LOADING, 30-MINUTE LIMIT, 8AM TO 6PM, MONDAY THROUGH SATURDAY

1075 California, south side, from 13 feet to 53 feet east of Taylor Street (40-foot zone)

ESTABLISH – WHITE ZONE, PASSENGER LOADING, 5-MINUTE LIMIT, 7AM TO 10PM, DAILY

1075 California Street, south side, from 53 feet to 124 feet east of Taylor Street (71-foot zone, Nob Hill, Supervisor District 3, Curbside Access, ccp@sfmta.com).

**Submit a comment on this item by 5pm on the last day of this 10-day noticing period:
April 21 to May 1 2026**

Online comments: Fill out form here [SFMTA.com/CurbZoneCommentForm](https://sfmta.com/CurbZoneCommentForm)

By phone: Call (415) 646-2599 leave voicemail, specify item number

By mail/drop-off: Curb Zone Changes, Public Noticing, SFMTA Streets Division,
One South Ness Avenue, 7th Floor, San Francisco, CA 94103-5417



[QR Code]
[SFMTA.com/CurbZoneChanges](https://sfmta.com/CurbZoneChanges)

At the end of the comment period, all feedback received will be reviewed by staff. Based on this feedback a recommendation to either approve, amend, or withdraw an item will be provided to the City Traffic Engineer who has the authority to make the final decision.

Results posted by 5 pm five business days after the end of each public comment period at:
[SFMTA.com/CurbZoneChanges](https://sfmta.com/CurbZoneChanges)

Final SFMTA Decisions involving certain parking or traffic modifications, whether made by the City Traffic Engineer or the SFMTA Board, can be reviewed by the Board of Supervisors pursuant to [Ordinance 127-18](#). Information about the review process can be found at [SFMTA.com/BOSAppeal](https://sfmta.com/BOSAppeal).

This public comment period constitutes a public hearing per San Francisco Transportation Code Division I, Section 101

PUBLIC COMMENT PERIOD FOR CURB ZONE CHANGES

April 21 to May 1 2026

Cambios Propuestos en la Calle | 街道改變建議 | Ipinanukalang pagbabago sa kalsada



SFMTA

Item #4



The proposed accessible passenger loading zone will support an elementary school.

Alameda Street between Rhode Island Street and De Haro Street – Establishing an Accessible Passenger Loading Zone

ESTABLISH – WHITE ZONE, ACCESSIBLE PASSENGER LOADING, 5-MINUTE LIMIT, 7AM TO 9AM AND 2:30PM TO 6PM, SCHOOL DAYS

"1750" Alameda Street, north side, from 17 feet to 115 feet west of De Haro Street (98-foot zone), SOMA, Supervisor District 6, Broderick Paulo, broderick.paulo@sfmta.com.

**Submit a comment on this item by 5pm on the last day of this 10-day noticing period:
April 21 to May 1 2026**

Online comments: Fill out form here [SFMTA.com/CurbZoneCommentForm](https://sfmta.com/CurbZoneCommentForm)

By phone: Call (415) 646-2599 leave voicemail, specify item number

By mail/drop-off: Curb Zone Changes, Public Noticing, SFMTA Streets Division,
One South Ness Avenue, 7th Floor, San Francisco, CA 94103-5417



[QR Code]
[SFMTA.com/CurbZoneChanges](https://sfmta.com/CurbZoneChanges)

At the end of the comment period, all feedback received will be reviewed by staff. Based on this feedback a recommendation to either approve, amend, or withdraw an item will be provided to the City Traffic Engineer who has the authority to make the final decision.

Results posted by 5 pm five business days after the end of each public comment period at:
[SFMTA.com/CurbZoneChanges](https://sfmta.com/CurbZoneChanges)

Final SFMTA Decisions involving certain parking or traffic modifications, whether made by the City Traffic Engineer or the SFMTA Board, can be reviewed by the Board of Supervisors pursuant to [Ordinance 127-18](#). Information about the review process can be found at [SFMTA.com/BOSAppeal](https://sfmta.com/BOSAppeal).

This public comment period constitutes a public hearing per San Francisco Transportation Code Division I, Section 101

PUBLIC COMMENT PERIOD FOR CURB ZONE CHANGES

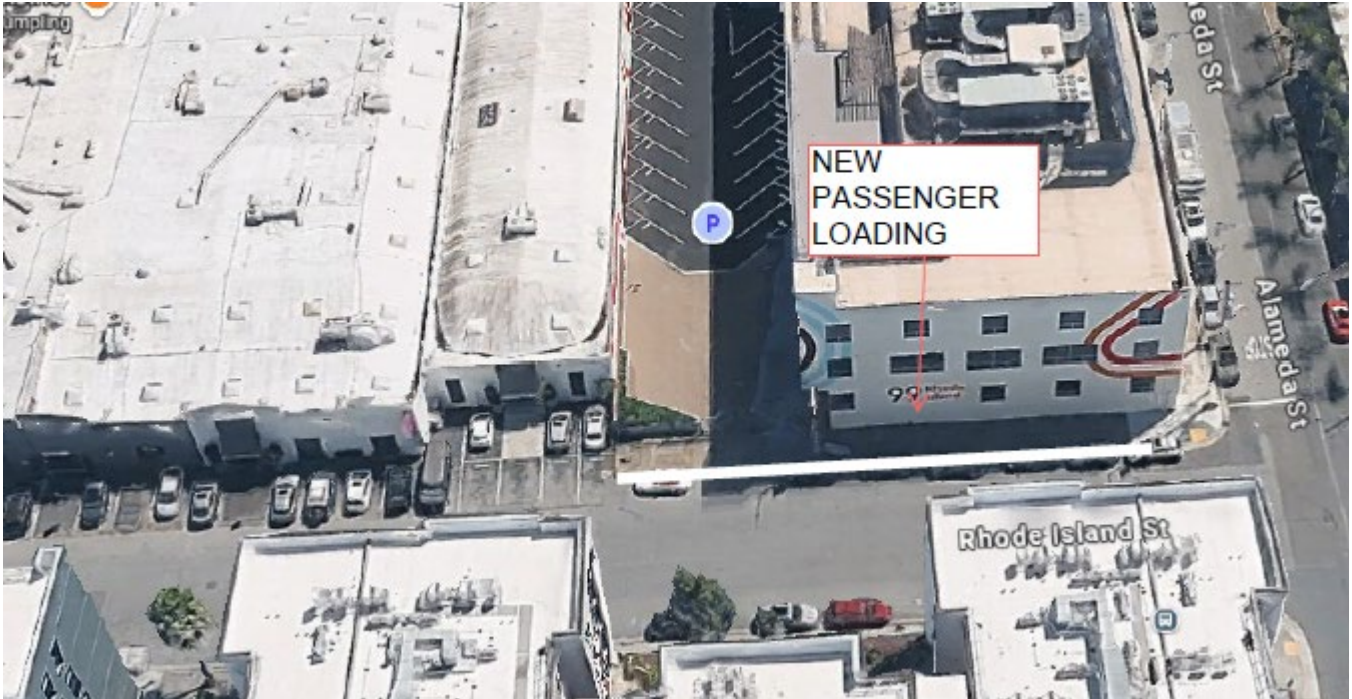
April 21 to May 1 2026

Cambios Propuestos en la Calle | 街道改變建議 | Ipinanukalang pagbabago sa kalsada



SFMTA

Item #5



The proposed accessible passenger loading zone will support an elementary school.

Rhode Island Street between Alameda Street and Division Street – Establishing an Accessible Passenger Loading Zone

ESTABLISH – WHITE ZONE, ACCESSIBLE PASSENGER LOADING, 5-MINUTE LIMIT, 7AM TO 9AM AND 2:30PM TO 6PM, SCHOOL DAYS

99 Rhode Island Street, east side, from 7 feet to 150 feet north of Alameda Street (143-foot zone), SOMA, Supervisor District 6, Broderick Paulo, broderick.paulo@sfmta.com.

**Submit a comment on this item by 5pm on the last day of this 10-day noticing period:
April 21 to May 1 2026**

Online comments: Fill out form here [SFMTA.com/CurbZoneCommentForm](https://sfmta.com/CurbZoneCommentForm)

By phone: Call (415) 646-2599 leave voicemail, specify item number

By mail/drop-off: Curb Zone Changes, Public Noticing, SFMTA Streets Division,
One South Ness Avenue, 7th Floor, San Francisco, CA 94103-5417



[QR Code]
[SFMTA.com/CurbZoneChanges](https://sfmta.com/CurbZoneChanges)

At the end of the comment period, all feedback received will be reviewed by staff. Based on this feedback a recommendation to either approve, amend, or withdraw an item will be provided to the City Traffic Engineer who has the authority to make the final decision.

Results posted by 5 pm five business days after the end of each public comment period at:
[SFMTA.com/CurbZoneChanges](https://sfmta.com/CurbZoneChanges)

Final SFMTA Decisions involving certain parking or traffic modifications, whether made by the City Traffic Engineer or the SFMTA Board, can be reviewed by the Board of Supervisors pursuant to [Ordinance 127-18](#). Information about the review process can be found at [SFMTA.com/BOSAppeal](https://sfmta.com/BOSAppeal).

This public comment period constitutes a public hearing per San Francisco Transportation Code Division I, Section 101

PUBLIC COMMENT PERIOD FOR CURB ZONE CHANGES

April 21 to May 1 2026

Cambios Propuestos en la Calle | 街道改變建議 | Ipinanukalang pagbabago sa kalsada



SFMTA

Item #6



The sponsoring childcare facility has requested that the afternoon hours for the passenger loading zones be extended by one hour to better align with pickups.

16th Street between Dolores Street and Guerrero Street – Extending the Hours of Passenger Loading Zones and Shortening a Passenger Loading Zone for Daylighting

RESCIND – WHITE ZONE, PASSENGER LOADING, 5-MINUTE LIMIT, 6:45AM TO 9:30AM AND 3:30PM TO 6PM, MONDAY THROUGH FRIDAY

“3298” 16th Street, north side, from 9 feet to 68 feet east of Dolores Street (59-foot zone)

ESTABLISH – RED ZONE, NO STOPPING ANYTIME

“3298” 16th Street, north side, from 0 feet to 20 feet east of Dolores Street (20-foot zone)

ESTABLISH – WHITE ZONE, PASSENGER LOADING, 5-MINUTE LIMIT, 6:45AM TO 9:30AM AND 2:30PM TO 6PM, MONDAY THROUGH FRIDAY

“3298” 16th Street, north side, from 20 feet to 68 feet east of Dolores Street (48-foot zone)

RESCIND – WHITE ZONE, PASSENGER LOADING, 5-MINUTE LIMIT, 6:45AM TO 9:30AM AND 3:30PM TO 6PM, MONDAY THROUGH FRIDAY

ESTABLISH – WHITE ZONE, PASSENGER LOADING, 5-MINUTE LIMIT, 6:45AM TO 9:30AM AND 2:30PM TO 6PM, MONDAY THROUGH FRIDAY

“3270” 16th Street, north side, from 85 feet to 209 feet east of Dolores Street (124-foot zone), Mission, Supervisor District 8, Curb Access, ccp@sfmta.com.

**Submit a comment on this item by 5pm on the last day of this 10-day noticing period:
April 21 to May 1 2026**

Online comments: Fill out form here [SFMTA.com/CurbZoneCommentForm](https://sfmta.com/CurbZoneCommentForm)

By phone: Call (415) 646-2599 leave voicemail, specify item number

By mail/drop-off: Curb Zone Changes, Public Noticing, SFMTA Streets Division,
One South Ness Avenue, 7th Floor, San Francisco, CA 94103-5417



[QR Code]
[SFMTA.com/CurbZoneChanges](https://sfmta.com/CurbZoneChanges)

At the end of the comment period, all feedback received will be reviewed by staff. Based on this feedback a recommendation to either approve, amend, or withdraw an item will be provided to the City Traffic Engineer who has the authority to make the final decision.

Results posted by 5 pm five business days after the end of each public comment period at:
[SFMTA.com/CurbZoneChanges](https://sfmta.com/CurbZoneChanges)

Final SFMTA Decisions involving certain parking or traffic modifications, whether made by the City Traffic Engineer or the SFMTA Board, can be reviewed by the Board of Supervisors pursuant to [Ordinance 127-18](#). Information about the review process can be found at [SFMTA.com/BOSAppeal](https://sfmta.com/BOSAppeal).

This public comment period constitutes a public hearing per San Francisco Transportation Code Division I, Section 101

PUBLIC COMMENT PERIOD FOR CURB ZONE CHANGES

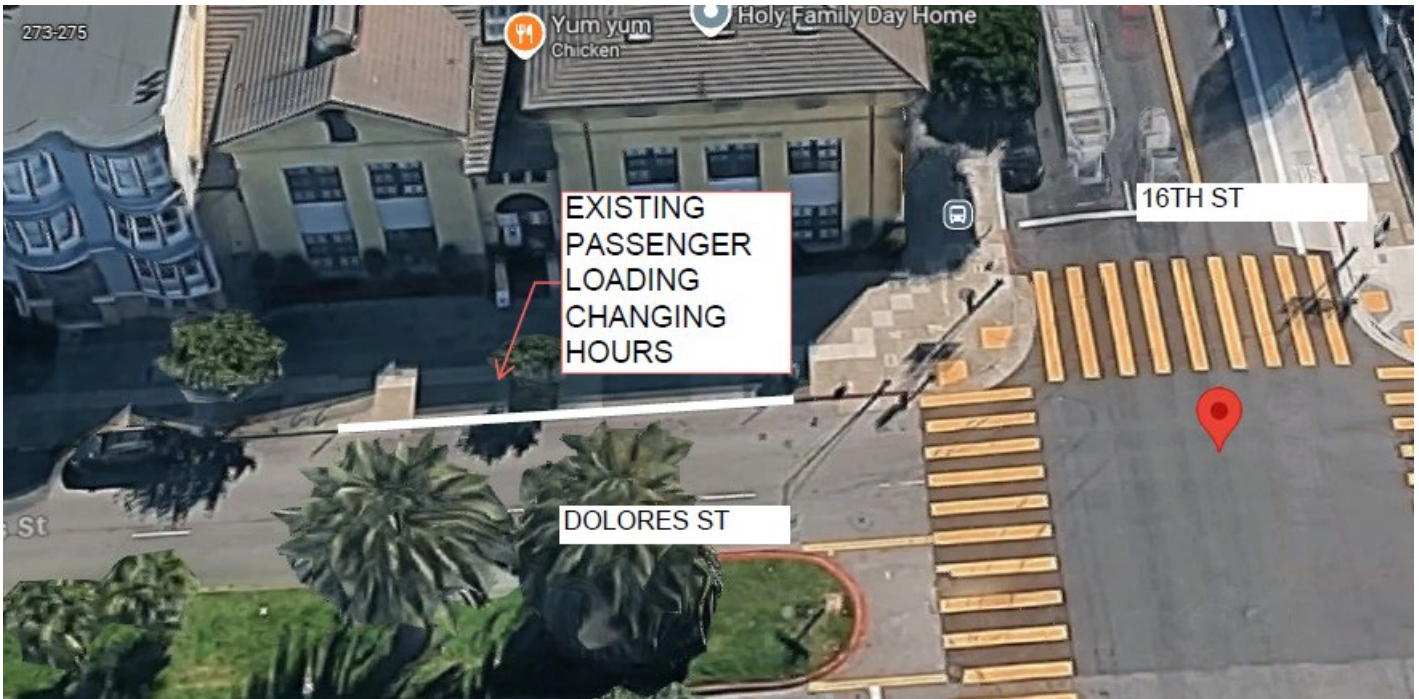
April 21 to May 1 2026

Cambios Propuestos en la Calle | 街道改變建議 | Ipinanukalang pagbabago sa kalsada



SFMTA

Item #7



The sponsoring childcare facility has requested that the afternoon hours for the passenger loading zone be extended by one hour to better align with pickups.

Dolores Street between 16th Street and 15th Street – Extending the Hours of a Passenger Loading Zone

RESCIND – WHITE ZONE, PASSENGER LOADING, 5-MINUTE LIMIT, 6:45AM TO 9:30AM AND 3:30PM TO 6PM, MONDAY THROUGH FRIDAY

ESTABLISH – WHITE ZONE, PASSENGER LOADING, 5-MINUTE LIMIT, 6:45AM TO 9:30AM AND 2:30PM TO 6PM, MONDAY THROUGH FRIDAY

299 Dolores Street, east side, from 20 feet to 81 feet north of 16th Street (61-foot zone), Mission, Supervisor District 8, Curb Access, ccp@sfmta.com.

**Submit a comment on this item by 5pm on the last day of this 10-day noticing period:
April 21 to May 1 2026**

Online comments: Fill out form here [SFMTA.com/CurbZoneCommentForm](https://sfmta.com/CurbZoneCommentForm)

By phone: Call (415) 646-2599 leave voicemail, specify item number

By mail/drop-off: Curb Zone Changes, Public Noticing, SFMTA Streets Division,
One South Ness Avenue, 7th Floor, San Francisco, CA 94103-5417



[QR Code]
[SFMTA.com/CurbZoneChanges](https://sfmta.com/CurbZoneChanges)

At the end of the comment period, all feedback received will be reviewed by staff. Based on this feedback a recommendation to either approve, amend, or withdraw an item will be provided to the City Traffic Engineer who has the authority to make the final decision.

Results posted by 5 pm five business days after the end of each public comment period at:
[SFMTA.com/CurbZoneChanges](https://sfmta.com/CurbZoneChanges)

Final SFMTA Decisions involving certain parking or traffic modifications, whether made by the City Traffic Engineer or the SFMTA Board, can be reviewed by the Board of Supervisors pursuant to [Ordinance 127-18](#). Information about the review process can be found at [SFMTA.com/BOSAppeal](https://sfmta.com/BOSAppeal).

This public comment period constitutes a public hearing per San Francisco Transportation Code Division I, Section 101

PUBLIC COMMENT PERIOD FOR CURB ZONE CHANGES

April 21 to May 1 2026

Cambios Propuestos en la Calle | 街道改變建議 | Ipananukalang pagbabago sa kalsada



SFMTA

Item #8



A church has requested a passenger loading zone to provide spaces for parishioners being dropped off and picked up during their service hours..

15th Street between Church Street and Sharon Street – Establishing a Passenger Loading Zone ESTABLISH – WHITE ZONE, PASSENGER LOADING, 5-MINUTE LIMIT, 4PM TO 7PM, THURSDAYS, 3PM TO 8PM, SATURDAYS, AND 7AM TO NOON, SUNDAYS

2005 15th Street, south side, from 20 feet to 57 feet west of Church Street (37-foot zone),
Castro/Upper Market, Supervisor District 8, Curb Access, ccp@sfmta.com.

**Submit a comment on this item by 5pm on the last day of this 10-day noticing period:
April 21 to May 1 2026**

Online comments: Fill out form here [SFMTA.com/CurbZoneCommentForm](https://sfmta.com/CurbZoneCommentForm)

By phone: Call (415) 646-2599 leave voicemail, specify item number

By mail/drop-off: Curb Zone Changes, Public Noticing, SFMTA Streets Division,
One South Ness Avenue, 7th Floor, San Francisco, CA 94103-5417



[QR Code]
[SFMTA.com/CurbZoneChanges](https://sfmta.com/CurbZoneChanges)

At the end of the comment period, all feedback received will be reviewed by staff. Based on this feedback a recommendation to either approve, amend, or withdraw an item will be provided to the City Traffic Engineer who has the authority to make the final decision.

Results posted by 5 pm five business days after the end of each public comment period at:
[SFMTA.com/CurbZoneChanges](https://sfmta.com/CurbZoneChanges)

Final SFMTA Decisions involving certain parking or traffic modifications, whether made by the City Traffic Engineer or the SFMTA Board, can be reviewed by the Board of Supervisors pursuant to [Ordinance 127-18](#). Information about the review process can be found at [SFMTA.com/BOSAppeal](https://sfmta.com/BOSAppeal).

This public comment period constitutes a public hearing per San Francisco Transportation Code Division I, Section 101

PUBLIC COMMENT PERIOD FOR CURB ZONE CHANGES

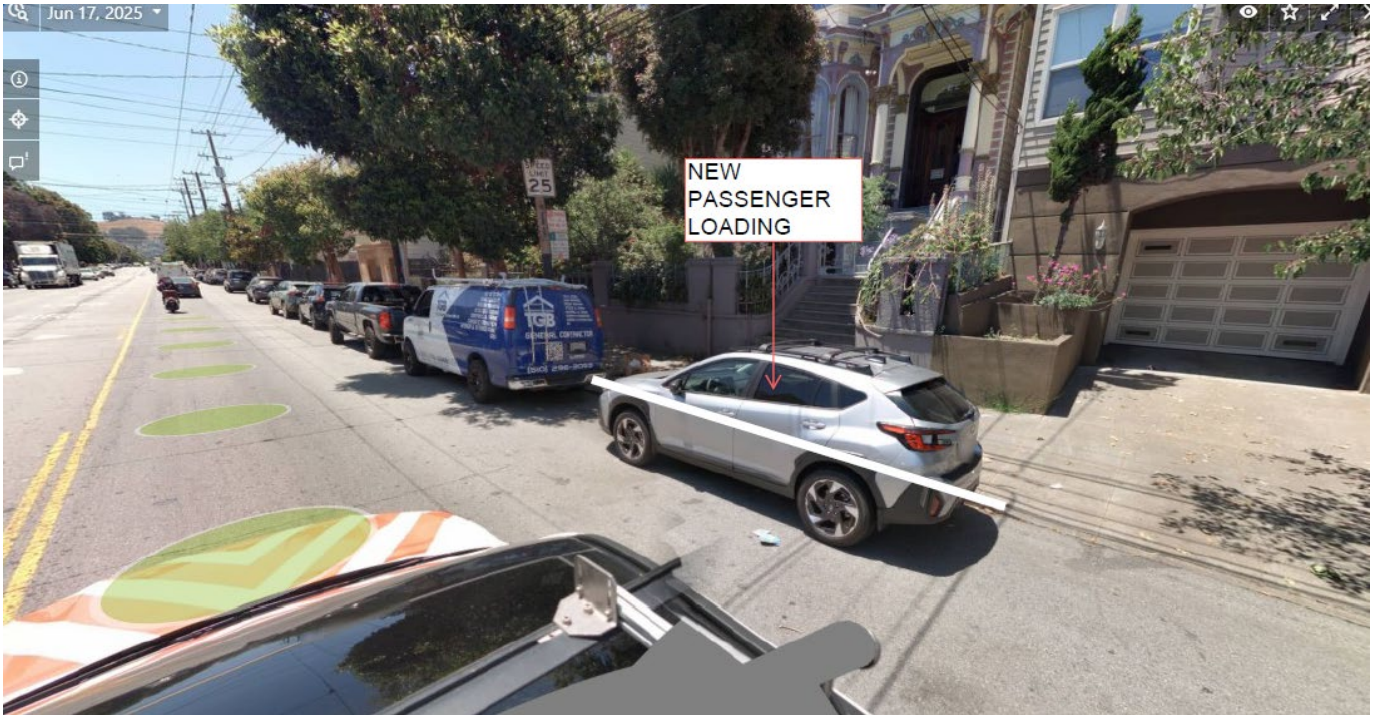
April 21 to May 1 2026

Cambios Propuestos en la Calle | 街道改變建議 | Ipananukalang pagbabago sa kalsada



SFMTA

Item #9



An adult residential building has requested curb access for safe loading for their clients. The hours and size of zone have been designed to help lessen impacts to parking availability for neighbors.

South Van Ness Avenue between 19th Street and 20th Street – Establishing a Passenger Loading Zone

ESTABLISH – WHITE ZONE, PASSENGER LOADING, 5-MINUTE LIMIT, 8AM TO 10AM and 5PM TO 8PM, MONDAY THROUGH FRIDAY

822 South Van Ness Avenue, west side, from 92 feet to 112 feet south of 19th street (20-foot zone) (starting at end of driveway), Mission, Supervisor District 9, Curb Access, ccp@sfmta.com.

**Submit a comment on this item by 5pm on the last day of this 10-day noticing period:
April 21 to May 1 2026**

Online comments: Fill out form here [SFMTA.com/CurbZoneCommentForm](https://sfmta.com/CurbZoneCommentForm)

By phone: Call (415) 646-2599 leave voicemail, specify item number

By mail/drop-off: Curb Zone Changes, Public Noticing, SFMTA Streets Division,
One South Ness Avenue, 7th Floor, San Francisco, CA 94103-5417



[QR Code]
[SFMTA.com/CurbZoneChanges](https://sfmta.com/CurbZoneChanges)

At the end of the comment period, all feedback received will be reviewed by staff. Based on this feedback a recommendation to either approve, amend, or withdraw an item will be provided to the City Traffic Engineer who has the authority to make the final decision.

Results posted by 5 pm five business days after the end of each public comment period at:
[SFMTA.com/CurbZoneChanges](https://sfmta.com/CurbZoneChanges)

Final SFMTA Decisions involving certain parking or traffic modifications, whether made by the City Traffic Engineer or the SFMTA Board, can be reviewed by the Board of Supervisors pursuant to [Ordinance 127-18](#). Information about the review process can be found at [SFMTA.com/BOSAppeal](https://sfmta.com/BOSAppeal).

This public comment period constitutes a public hearing per San Francisco Transportation Code Division I, Section 101

PUBLIC COMMENT PERIOD FOR CURB ZONE CHANGES

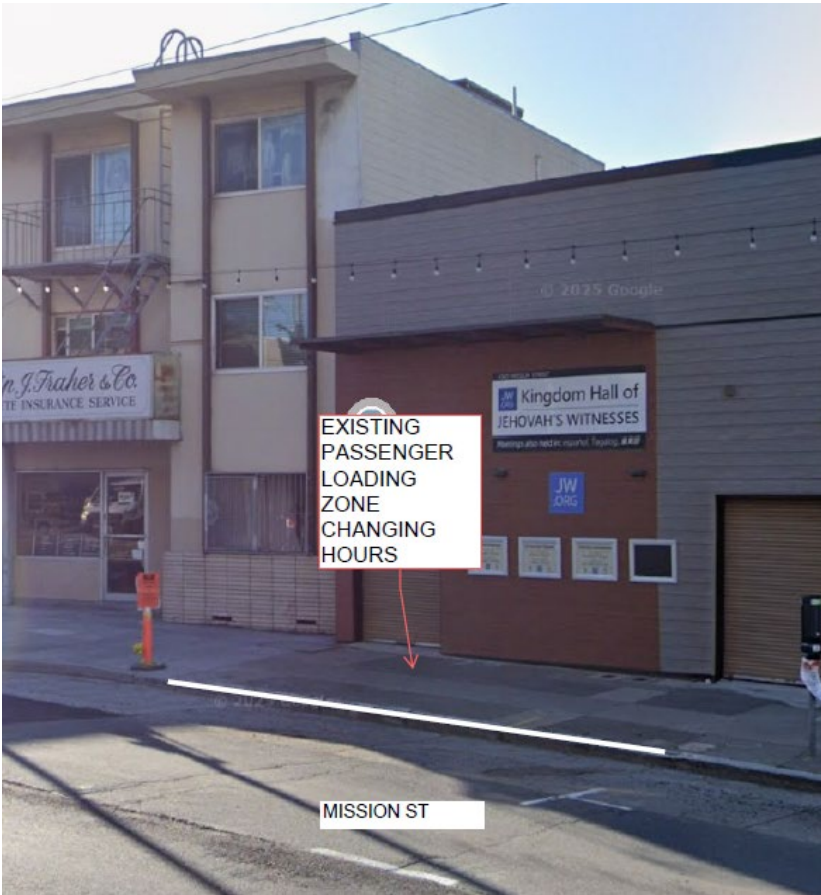
April 21 to May 1 2026

Cambios Propuestos en la Calle | 街道改變建議 | Ipinanukalang pagbabago sa kalsada



SFMTA

Item #10



This proposal would change the hours of an existing passenger loading zone from “During Posted Services” to specific hours and days related to the sponsoring church’s services.

Mission Street between Theresa Street and Tingley Street – Changing the Hours of a Passenger Loading Zone

RESCIND – WHITE ZONE, PASSENGER LOADING, 5-MINUTE LIMIT, DURING POSTED SERVICES

ESTABLISH – WHITE ZONE, PASSENGER LOADING, 5-MINUTE LIMIT, 6PM TO 9PM, TUESDAY THROUGH THURSDAY, AND 9AM TO 6PM, SUNDAY

4360 Mission Street, west side, from 23 feet to 45 feet north of Theresa Street (22-foot zone), Excelsior, Supervisor District 11, Curb Access, ccp@sfmta.com.

**Submit a comment on this item by 5pm on the last day of this 10-day noticing period:
April 21 to May 1 2026**

Online comments: Fill out form here [SFMTA.com/CurbZoneCommentForm](https://sfmta.com/CurbZoneCommentForm)

By phone: Call (415) 646-2599 leave voicemail, specify item number

By mail/drop-off: Curb Zone Changes, Public Noticing, SFMTA Streets Division,
One South Ness Avenue, 7th Floor, San Francisco, CA 94103-5417



[QR Code]
[SFMTA.com/CurbZoneChanges](https://sfmta.com/CurbZoneChanges)

At the end of the comment period, all feedback received will be reviewed by staff. Based on this feedback a recommendation to either approve, amend, or withdraw an item will be provided to the City Traffic Engineer who has the authority to make the final decision.

Results posted by 5 pm five business days after the end of each public comment period at:
[SFMTA.com/CurbZoneChanges](https://sfmta.com/CurbZoneChanges)

Final SFMTA Decisions involving certain parking or traffic modifications, whether made by the City Traffic Engineer or the SFMTA Board, can be reviewed by the Board of Supervisors pursuant to [Ordinance 127-18](#). Information about the review process can be found at [SFMTA.com/BOSAppeal](https://sfmta.com/BOSAppeal).

This public comment period constitutes a public hearing per San Francisco Transportation Code Division I, Section 101

PUBLIC COMMENT PERIOD FOR CURB ZONE CHANGES

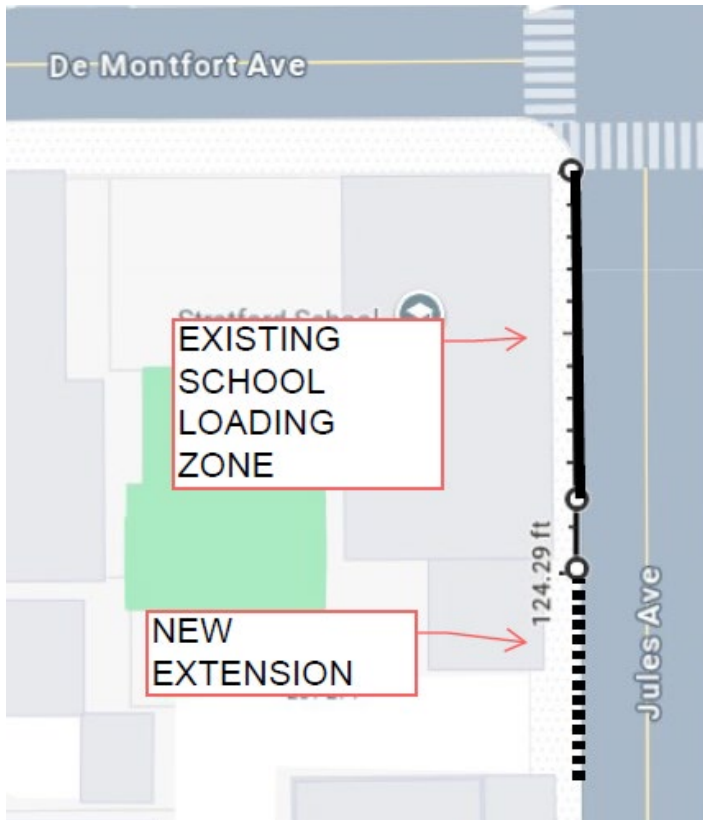
April 21 to May 1 2026

Cambios Propuestos en la Calle | 街道改變建議 | Ipinanukalang pagbabago sa kalsada



SFMTA

Item #11



Per the request of the sponsoring school, the existing passenger loading zone would be extended to the edge of the school's property to better accommodate student pickups and drop-offs.

Jules Avenue between De Montfort Avenue and Holloway Avenue – Extending a Passenger Loading Zone

RESCIND – WHITE ZONE, PASSENGER LOADING, 5-MINUTE LIMIT, 8AM TO 9AM AND 3PM TO 4PM, SCHOOL DAYS

"299" Jules Avenue, west side, from 0 feet to 100 feet south of De Montfort Avenue (100-foot zone)

ESTABLISH – WHITE ZONE, PASSENGER LOADING, 5-MINUTE LIMIT, 8AM TO 9AM AND 3PM TO 4PM, SCHOOL DAYS

"299" Jules Avenue, west side, from 0 feet to 100 feet (edge of driveway) and 124 feet (edge of driveway) to 188 feet (property line) south of De Montfort Avenue (164-foot total zone), Ingleside, Supervisor District 11, Curb Access, ccp@sfmta.com.

**Submit a comment on this item by 5pm on the last day of this 10-day noticing period:
April 21 to May 1 2026**

Online comments: Fill out form here [SFMTA.com/CurbZoneCommentForm](https://sfmta.com/CurbZoneCommentForm)

By phone: Call (415) 646-2599 leave voicemail, specify item number

By mail/drop-off: Curb Zone Changes, Public Noticing, SFMTA Streets Division,
One South Ness Avenue, 7th Floor, San Francisco, CA 94103-5417



[QR Code]
[SFMTA.com/CurbZoneChanges](https://sfmta.com/CurbZoneChanges)

At the end of the comment period, all feedback received will be reviewed by staff. Based on this feedback a recommendation to either approve, amend, or withdraw an item will be provided to the City Traffic Engineer who has the authority to make the final decision.

Results posted by 5 pm five business days after the end of each public comment period at:
[SFMTA.com/CurbZoneChanges](https://sfmta.com/CurbZoneChanges)

Final SFMTA Decisions involving certain parking or traffic modifications, whether made by the City Traffic Engineer or the SFMTA Board, can be reviewed by the Board of Supervisors pursuant to [Ordinance 127-18](#). Information about the review process can be found at [SFMTA.com/BOSAppeal](https://sfmta.com/BOSAppeal).

This public comment period constitutes a public hearing per San Francisco Transportation Code Division I, Section 101

PUBLIC COMMENT PERIOD FOR CURB ZONE CHANGES

April 21 to May 1 2026

Cambios Propuestos en la Calle | 街道改變建議 | Ipinanukalang pagbabago sa kalsada



SFMTA

Item #12



Per the request of the sponsoring church, this proposal would change the hours of an existing passenger loading zone from “During Posted Services” to specific hours and days related to the sponsoring church’s services.

Vicente Street between 22nd Avenue and 23rd Avenue – Changing the Hours of a Passenger Loading Zone
RESCIND – WHITE ZONE, PASSENGER LOADING, 5-MINUTE LIMIT, DURING POSTED SERVICES
ESTABLISH – WHITE ZONE, PASSENGER LOADING, 5-MINUTE LIMIT, 8AM TO 5PM, SUNDAYS
1150 Vicente Street, north side, from 73 feet to 109 feet east of 23rd Avenue (36-foot zone), Sunset, Supervisor District 4, Curb Access, ccp@sfmta.com.

**Submit a comment on this item by 5pm on the last day of this 10-day noticing period:
April 21 to May 1 2026**

Online comments: Fill out form here [SFMTA.com/CurbZoneCommentForm](https://sfmta.com/CurbZoneCommentForm)
By phone: Call (415) 646-2599 leave voicemail, specify item number
By mail/drop-off: Curb Zone Changes, Public Noticing, SFMTA Streets Division,
One South Ness Avenue, 7th Floor, San Francisco, CA 94103-5417



[QR Code]
[SFMTA.com/CurbZoneChanges](https://sfmta.com/CurbZoneChanges)

At the end of the comment period, all feedback received will be reviewed by staff. Based on this feedback a recommendation to either approve, amend, or withdraw an item will be provided to the City Traffic Engineer who has the authority to make the final decision.

Results posted by 5 pm five business days after the end of each public comment period at:
[SFMTA.com/CurbZoneChanges](https://sfmta.com/CurbZoneChanges)

Final SFMTA Decisions involving certain parking or traffic modifications, whether made by the City Traffic Engineer or the SFMTA Board, can be reviewed by the Board of Supervisors pursuant to [Ordinance 127-18](#). Information about the review process can be found at [SFMTA.com/BOSAppeal](https://sfmta.com/BOSAppeal).

This public comment period constitutes a public hearing per San Francisco Transportation Code Division I, Section 101