



SFMTA



Transit Update

SFMTA Board of Directors
May 5, 2026



Transit Update

Muni by the numbers

Muni service update

Potrero Yard Satellite Operations

Maintenance of Way Overview

Fix It! Week: Cameron Beach Yard

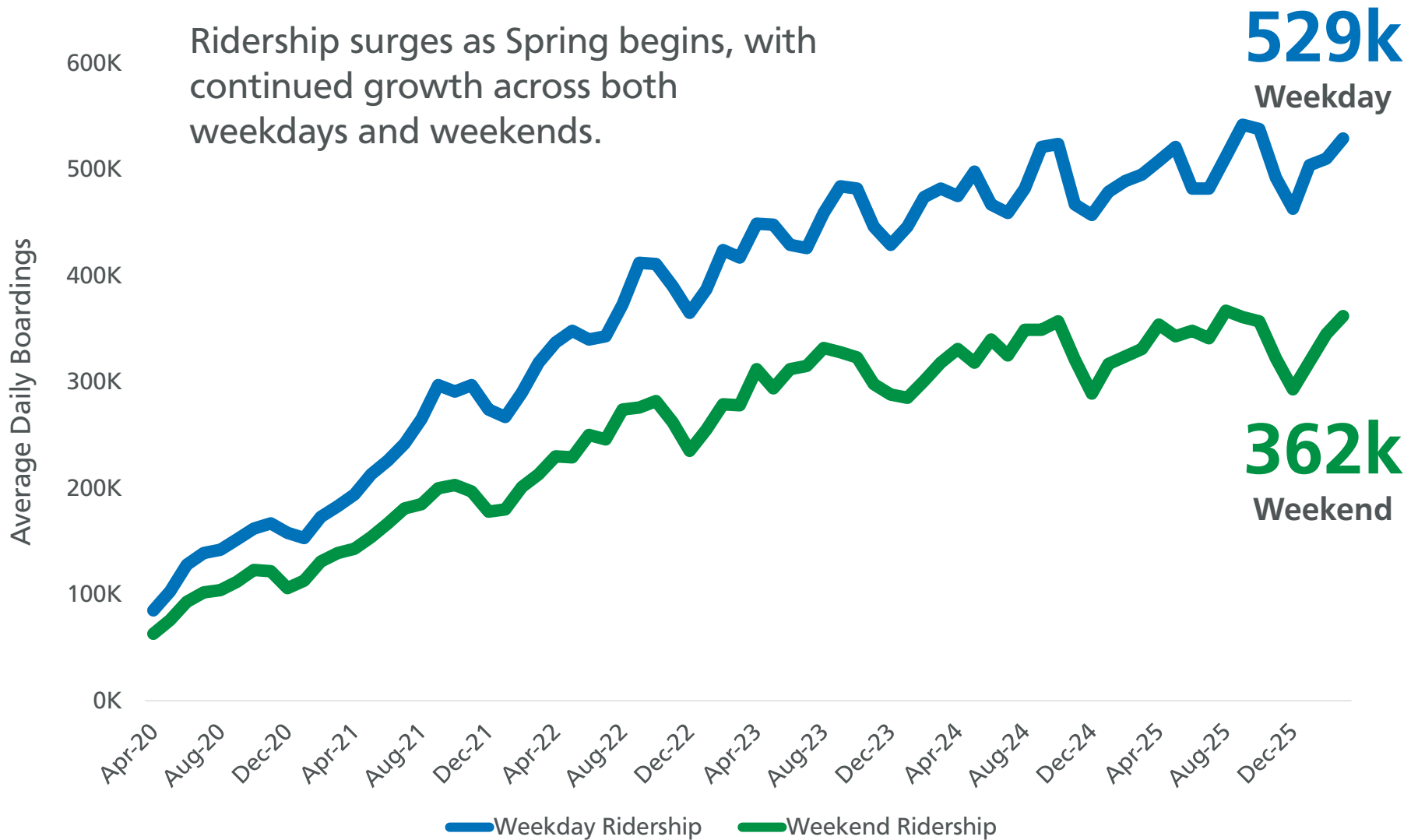
Ongoing Challenges

Fixed Guideway Capital Program



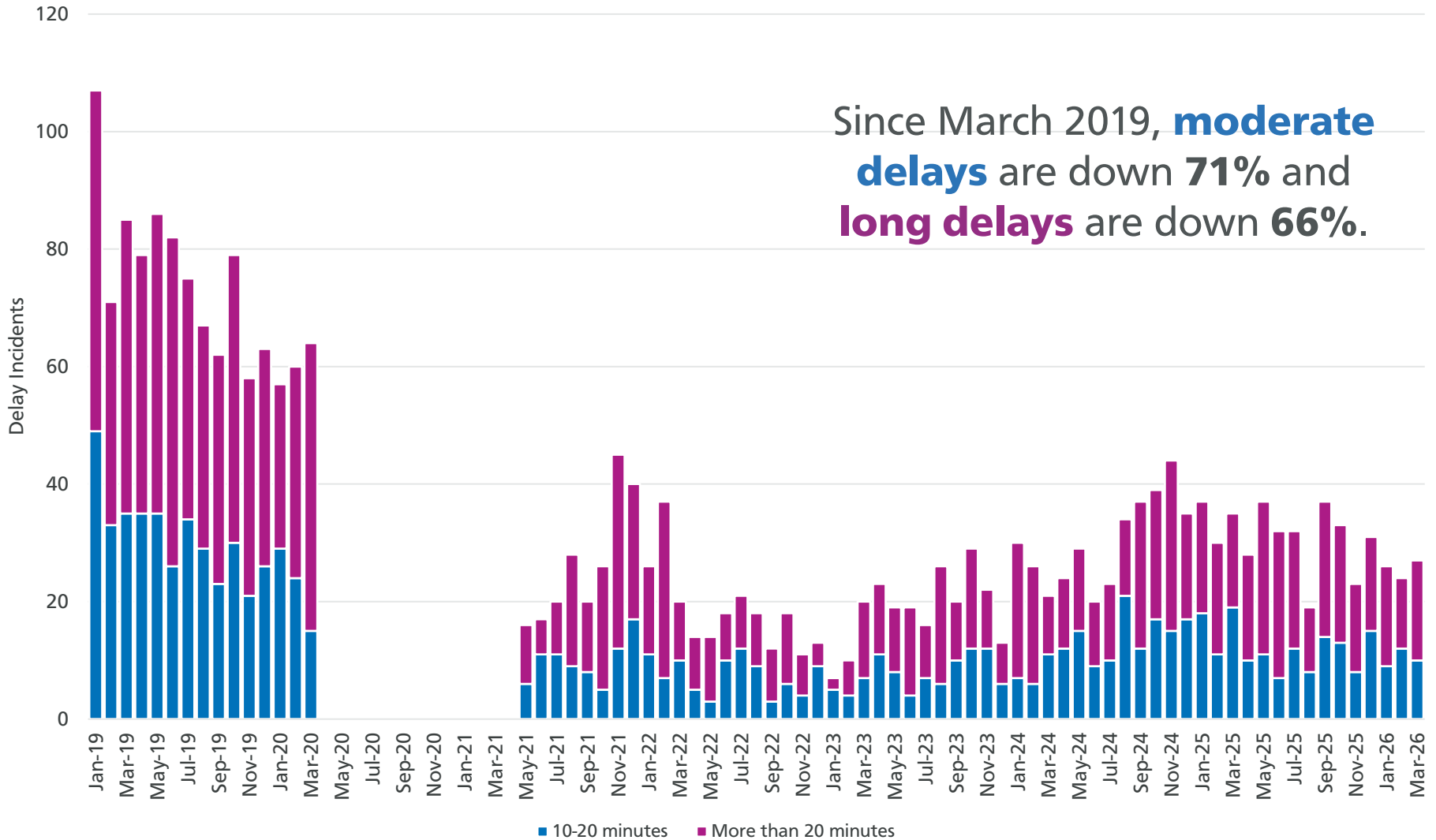
Muni by the Numbers

March Weekday and Weekend Ridership



Note: Excludes cable car and streetcar.

Market Street Subway Delay Events



Note: We have adjusted our methodology for determining whether an event occurred in the subway, slight differences from previous snapshots are due to improved granularity.

Muni Service Update



Muni Rider Survey Results



- 78% of Muni riders rated Muni service as excellent or good!
- This is six points higher than our 2024 overall satisfaction rating, which was already a historic high.

Summer Muni Service Planning

Operational Savings

- Continued identification of schedule efficiencies that have no impact on customer experience
- Focus on Muni Metro schedules that reduce operating costs



Summer Muni Service Changes

Effective: Saturday, June 6, 2026

Crowding adjustments

5R Fulton Rapid
14 Mission (Owl)

Schedule improvements

to reduce travel times
and improve reliability

5R Fulton Rapid
12 Folsom
37 Corbett
54 Felton
T Third

Route and bus stop changes

to respond to operator
feedback and improve
the customer experience

14R Mission Rapid
19 Polk
28 19th Avenue
30 Stockton
31 Balboa
35 Eureka
37 Corbett
48 Quintara/24th St
58 Lake Merced
91 3rd St/19th Ave Owl
K Ingleside Bus
L Owl



Potrero Yard Closure Collaboration

To make way for the Potrero Yard Modernization Project, we closed the yard and ended revenue operations in February.

During this transition, teams across the Transit Division came together to prepare and execute innovative solutions to maintain trolley coaches and sustain uninterrupted service for the closure's duration.



Satellite Operations During Potrero Yard Closure



New Facility Sites

Set up MME 4 Acres and Islais Creek Satellite (aka Marin Yard) to maintain Potrero's trolley coaches and deliver service



Charging Infrastructure

Designed and constructed trolley charging infrastructure inside an active rail yard at MME to maintain battery life of trolley coaches



Off-wire Trolley Operations

Created operations plan to maintain service capacities, leveraging off-wire capabilities to run trolley coach service out of facility with no overhead

Maintenance of Way (MOW) Overview



Maintenance of Way (MOW)

MOW is responsible for the upkeep, repair, and overall maintenance of all SFMTA's fixed transit infrastructure and facilities.

Facilities
Maintenance

Cable Car
Propulsion
Systems

Cable Car
Trackway

Light Rail
Trackway

Custodial
Services

Overhead
Lines

Motive
Power

Signal
Maintenance

Maintenance
Engineering

Digital
Systems

Subway
Station
Maintenance

Mechanical
Systems

MOW by the Numbers

Over **350** employees

Over **25** properties (including numerous building systems such as fire and life safety systems)

Approximately **90** track miles

4 tunnels, **12** subway stations

500 miles of overhead lines (OCS), **28** substations

94 vertical transportation units

Over **1,200** shelters/boarding islands

Train control, digital and signaling systems

Major Initiatives: Fix It! Week

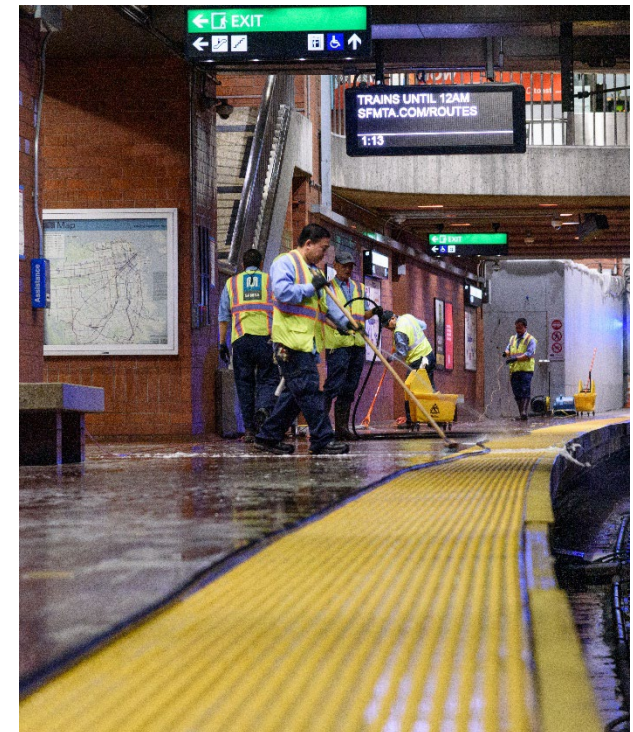
The Fix It! Week initiative is a successful model that uses off-peak work windows to deliver more complex, time demanding preventative and repair activities.

Fix It! Week has been in place for over 7 years

Applied Subway best practices to surface corridors and Muni operation facilities

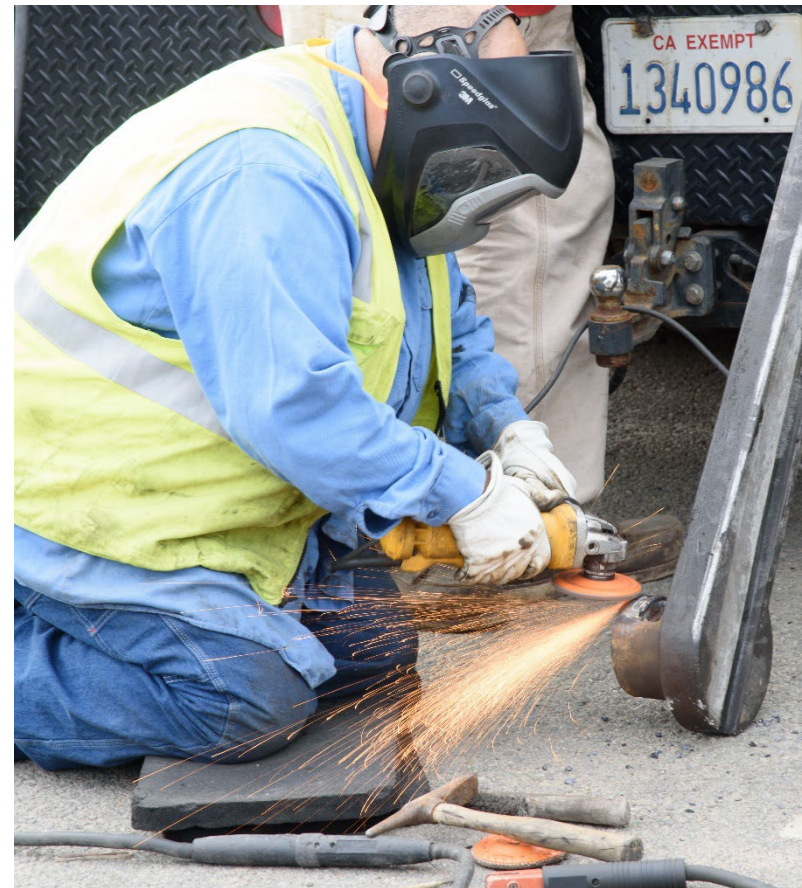
MOW continues to target quarterly Fix It! Weeks

Planning next Fix It! Week in the Spring/Summer 2026



Spotlight: Fix It! Week Cameron Beach Yard

First Fix It! Week at an operations yard in February 2026





**CAMERON
BEACH
YARD**

12

11

10

9

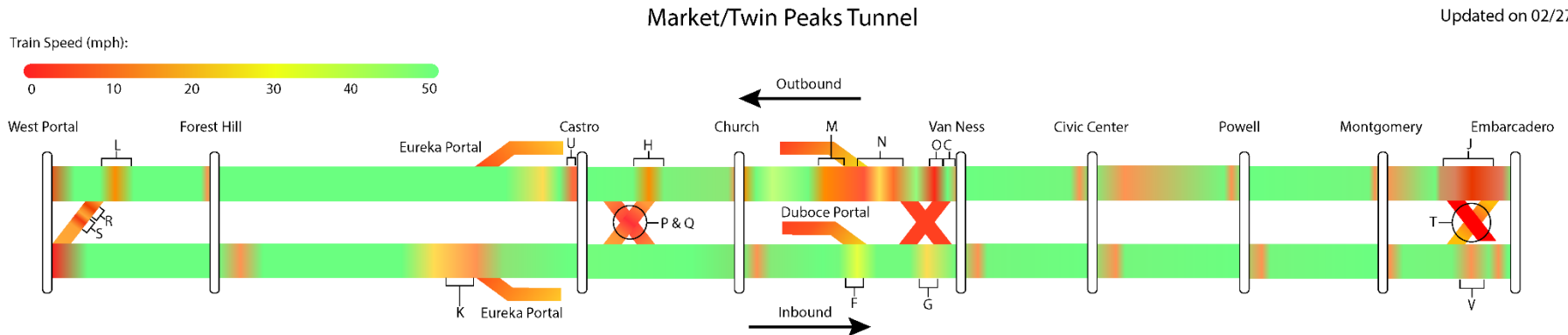
8

7

Ongoing Challenges

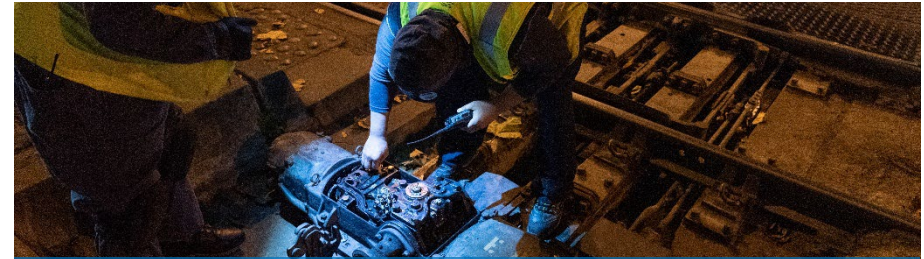
Muni operates on numerous legacy systems and infrastructure, many of which exceed 50 years in age. Our asset replacement backlog far exceeds our capital reinvestment – making our system particularly vulnerable without appropriate level of investment.

- Increased **risk of failure**
- Higher maintenance **costs**
- Reliability and **service impacts**
- **Safety** risks
- **Limited** system **capacity**
- **Incompatibility** with modern technology
- Deferred maintenance **backlog**
- Construction and service **coordination challenges**
- **Workforce and knowledge gaps**
- Climate and **environmental vulnerability**

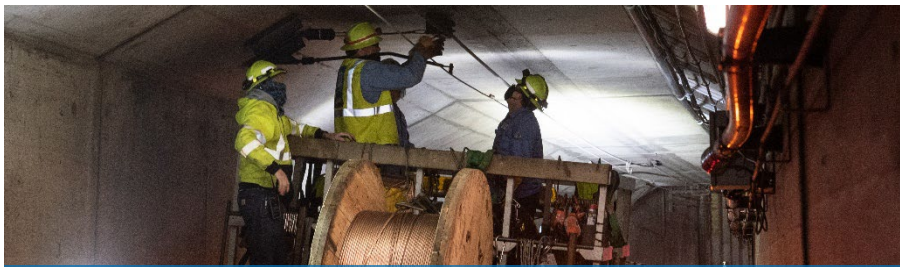


Fixed Guideway Capital Program

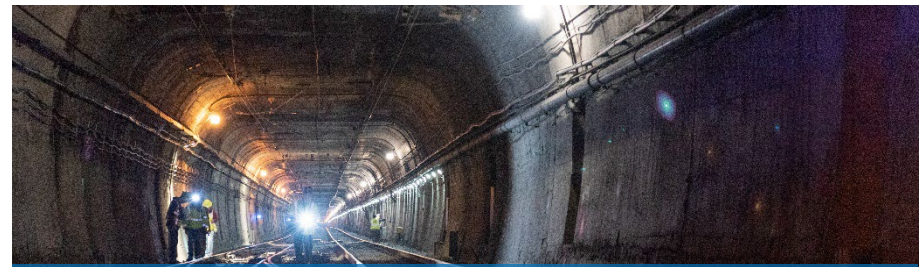
Next five years
of projects
focus on core systems



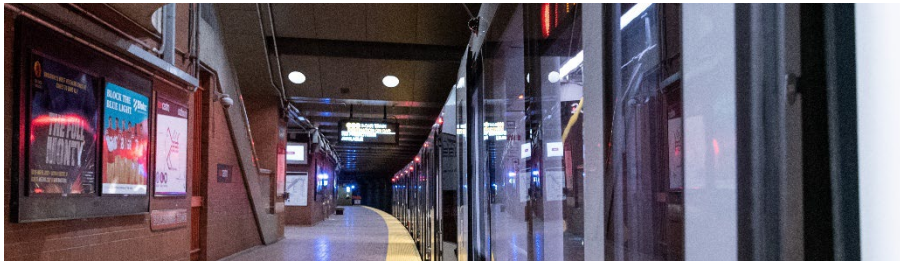
Track and Wayside Equipment



Traction Power



Tunnel Safety and Resiliency



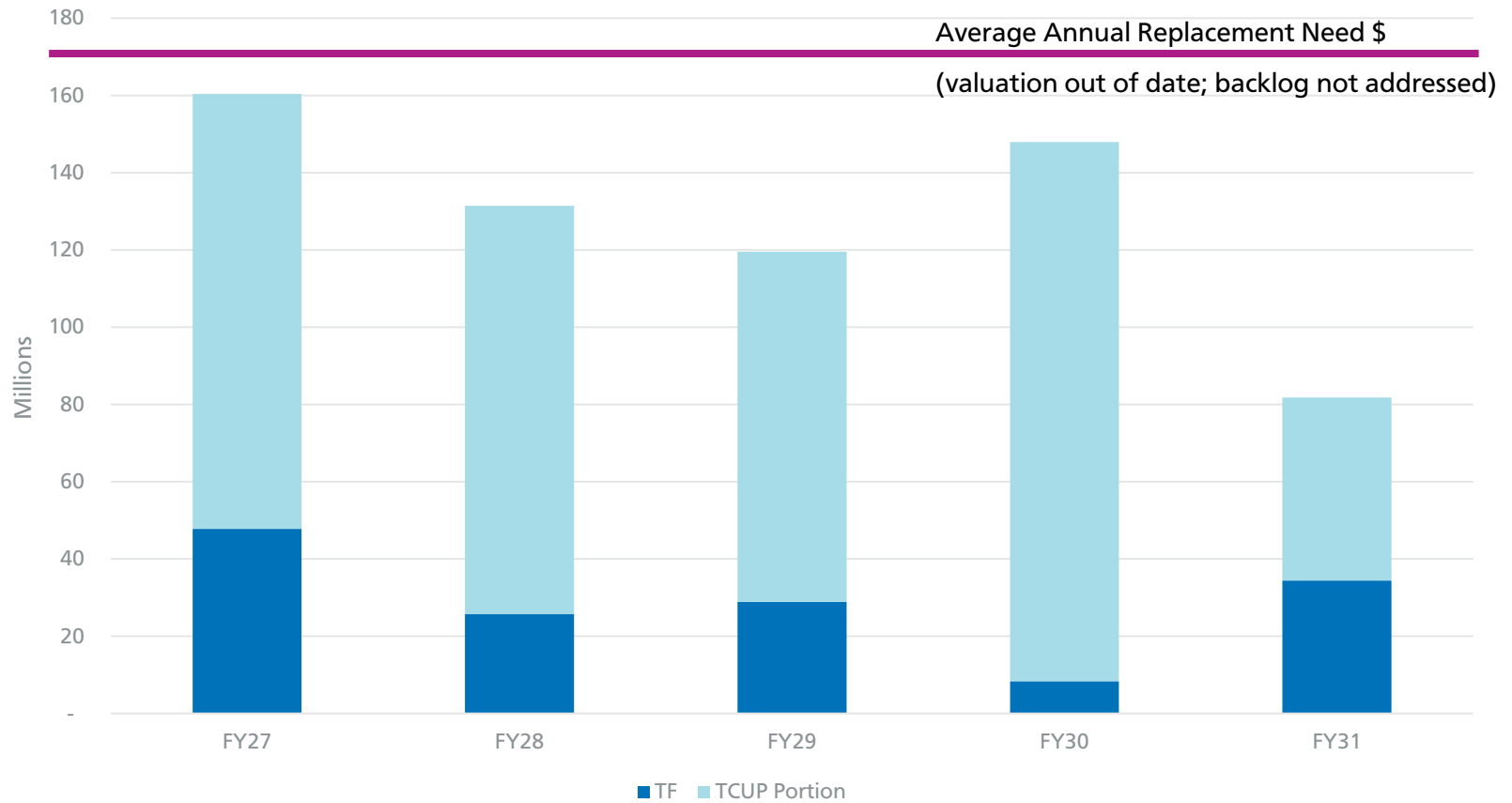
Station Enhancements



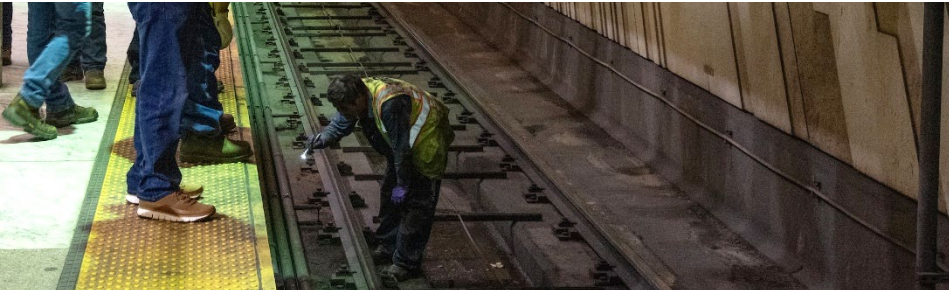
Train Control Upgrades

Fixed Guideway Capital Program

TF Funding Programming



Fixed Guideway Delivery Principles



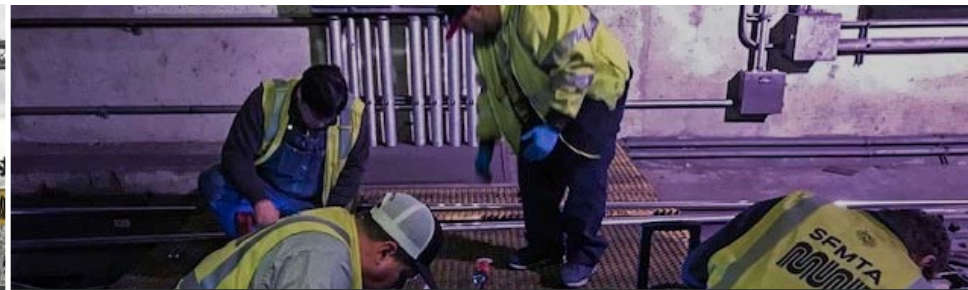
Commit to Lifecycle Management



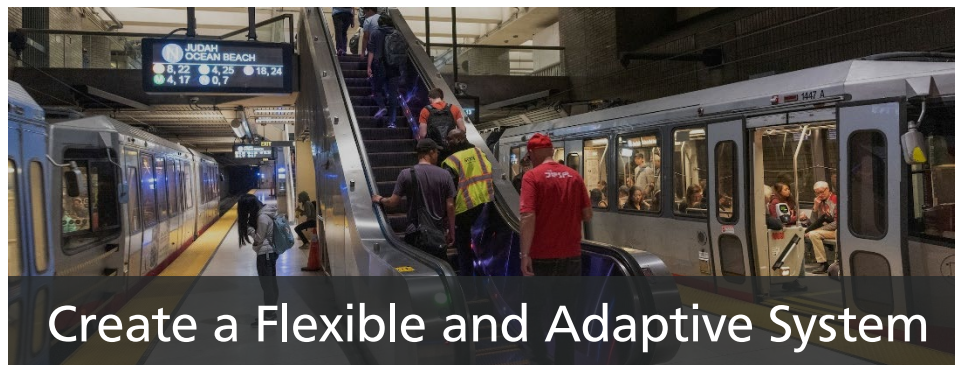
Prioritize the Customer Experience



Build in Resiliency and Redundancy



Right-size Project Delivery

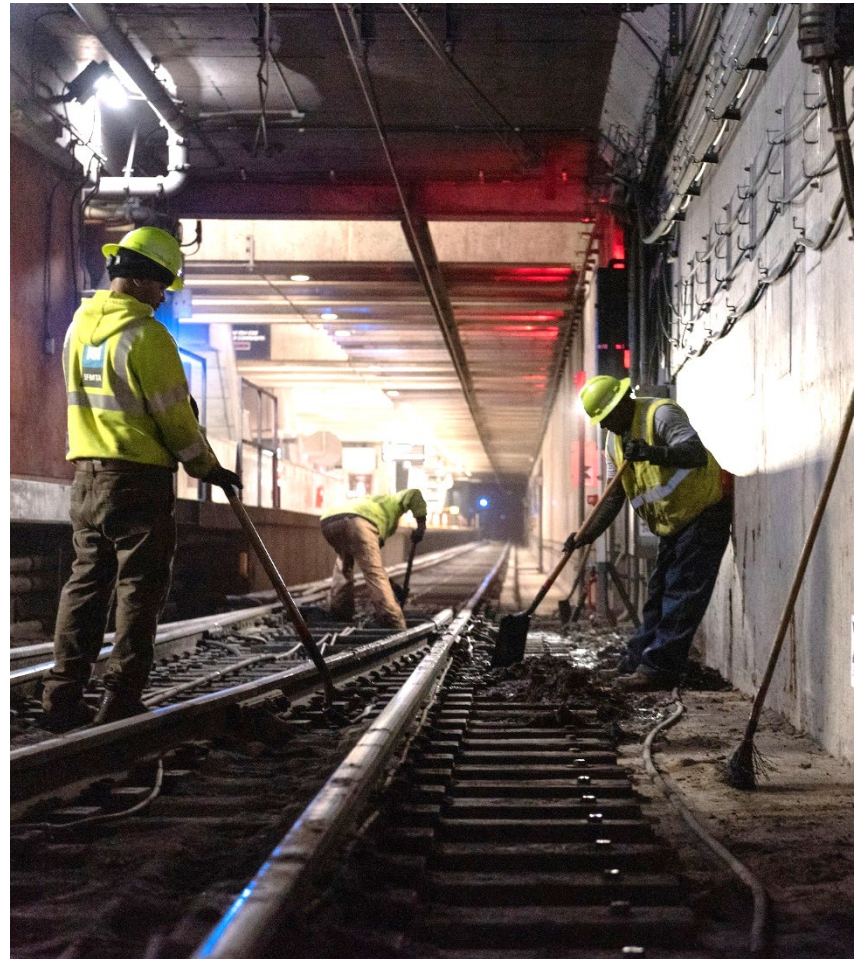


Create a Flexible and Adaptive System

Future Investment, Planning and Prioritization

Sustaining and modernizing Muni's fixed guideway network requires:

- A step change in long-term funding that matches the true scale of lifecycle needs
- Coordination across multiple system, major asset classes and other capital programs
- Reinvestment at the corridor level based on service demands
- Prioritization based on our understanding of condition



Key Takeaways

We're doing great work on a limited budget.

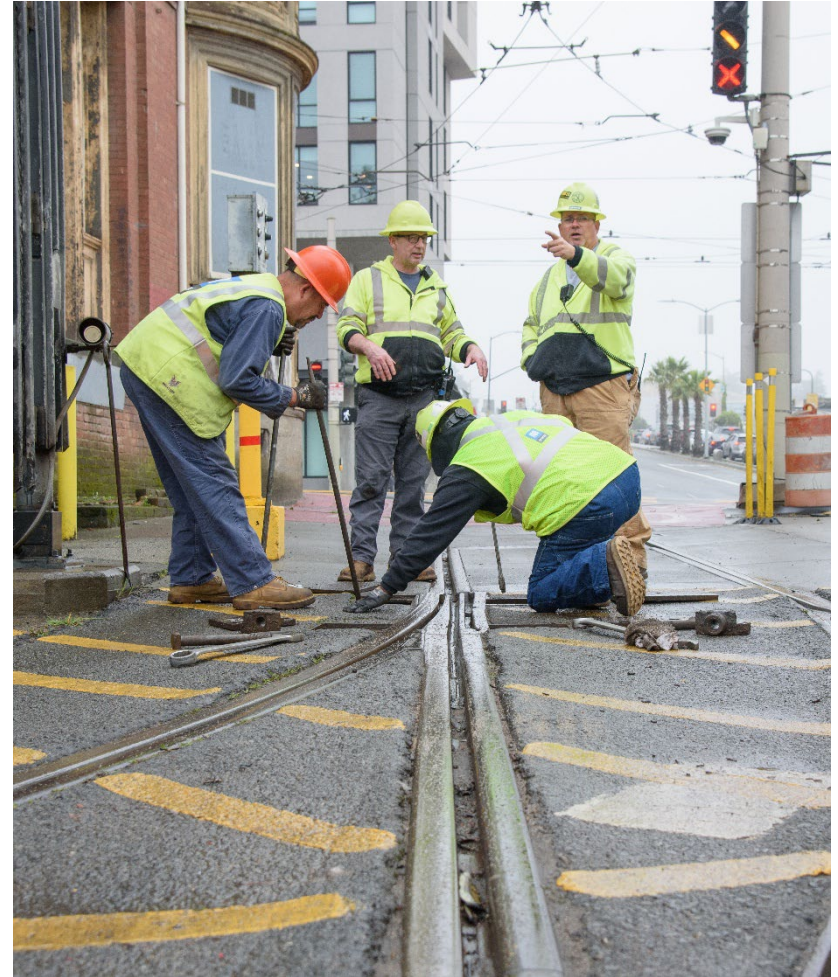
- Muni riders feel the impact of the great work we're doing.

But we still face challenges.

- Muni's infrastructure is vulnerable. Numerous legacy systems and infrastructure have exceeded 50 years in age (or will soon).

And we need to do more.

- We're working to better understand the full replacement value for our assets.
- We're developing a 10-year capital investment strategy for the program, which will need to be funded in the coming years.



Thank You

