

MUNIFORWARD



MUNI FORWARD



VISION
ZERO
SF | SAFETY
IN ACTION

TOPICS

- Service Planning Overview
- April 25 Service Increases
- Muni Forward General Update
- Haight Street Rapid Project
- McAllister Street Rapid Project
- New System Map and Related Bus Stop Changes

MUNIFORWARD

**We're actively working to create a safer,
more reliable and more comfortable
experience.**

*» Muni Forward brings together
the long list of projects underway
to achieve this vision, such as new
vehicles and route improvements
for smoother service like on the 5L.*



**GET ON
BOARD**
MUNIFORWARD.COM



KEY COMPONENTS FOR SERVICE RELIABILITY

- Operator Availability
- Schedules/Service Levels
- Vehicle and Infrastructure Reliability
- Supervision
- Roadway priority

SERVICE PLANNING OVERVIEW

How do we determine how much service to add to a route?

- Review minimum policy headways & service spans
- Identify routes with crowding by time of day
- Review anticipated growth and other relevant changes (e.g., changes to regional service, restroom needs, etc)
- Align service needs with available resources (dollars, vehicles, operators, etc)

SERVICE INCREASES

Four Phases of Service Increases Planned

- January 31, 2015 (1.5%)
- April 25, 2015 (2.5%)
- August 29, 2015 (tentative date) (3%)
- February 2016 (3%)

Some TEP recommendations will not be implemented in current two-year budget, but will be considered for next two-year budget

APRIL SERVICE CHANGES

Service Change	Lines
Increase in AM frequency	8AX, 8BX, 14L, 14X, 41 5L (shifted from 5), 38L (increase plus shift from 38) Plus a few extra trips on 10, 28
Increase in PM frequency	8AX, 8BX, 14L, 14X, 41 5L (shifted from 5), 38L (increase plus shift from 38)
Increase in mid day frequency	5L (shifted from 5), 8X, 14L, 29
Longer AM hours	14X, 1AX, 1BX, 8AX, 8BX, 30X, 31AX, 31BX
Fleet change	14X (40' buses)
Weekend Changes	38L on Sundays Longer hours for 14L Sat/Sun
Running time adjustments to improve OTP	All of the above routes plus 23, 27, 44, L, M

MUNI FORWARD PROJECT CATEGORIES

- 1. Creating a Rapid Network**
- 2. Improving Reliability**
- 3. Making the System Smarter**
- 4. Enhancing Safety and Access**



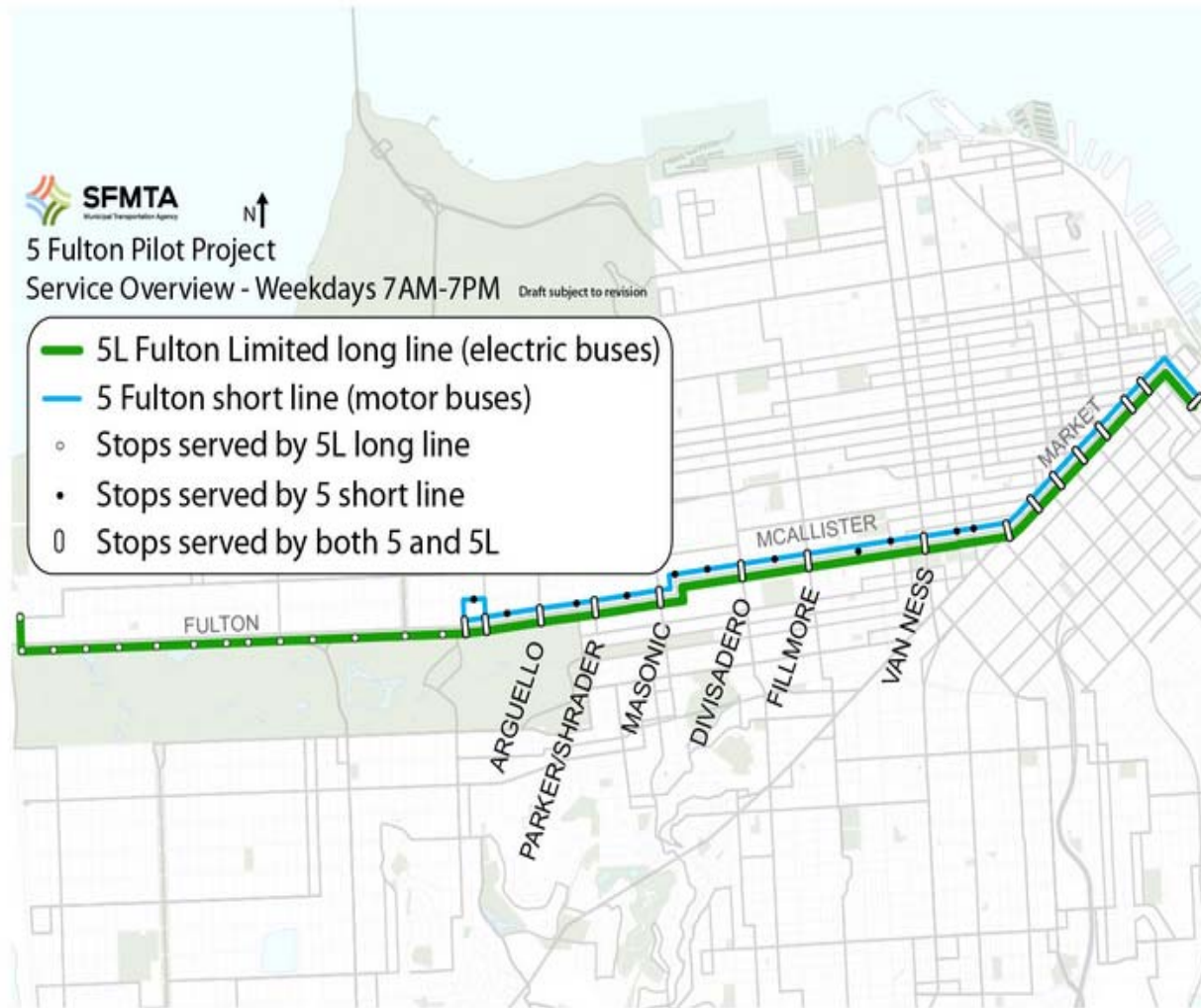
MUNIFORWARD

CREATING A RAPID NETWORK



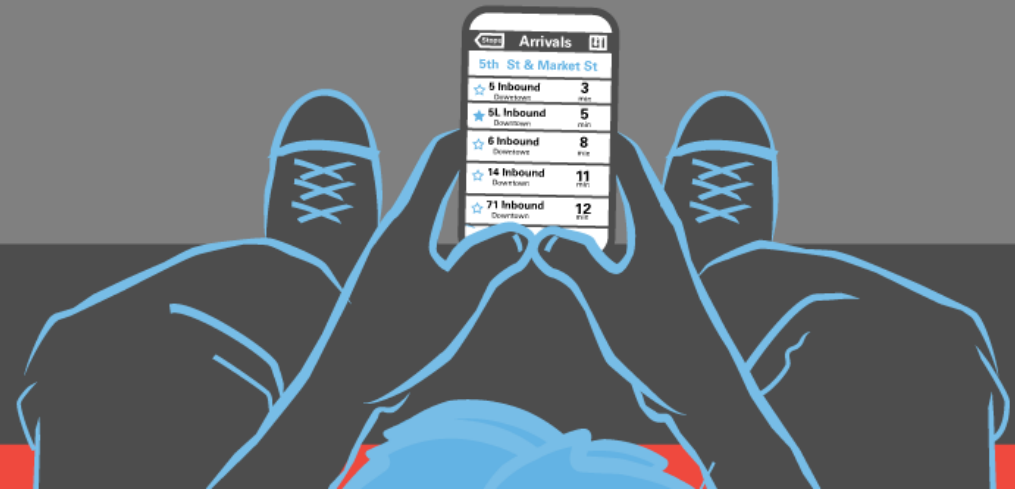
**Prioritize frequency and reliability
on our most heavily used routes**

PROJECTS UNDERWAY: 5L FULTON



MUNIFORWARD

IMPROVING RELIABILITY



**Improve the reliability of our
Muni service system-wide**

MUNI FORWARD

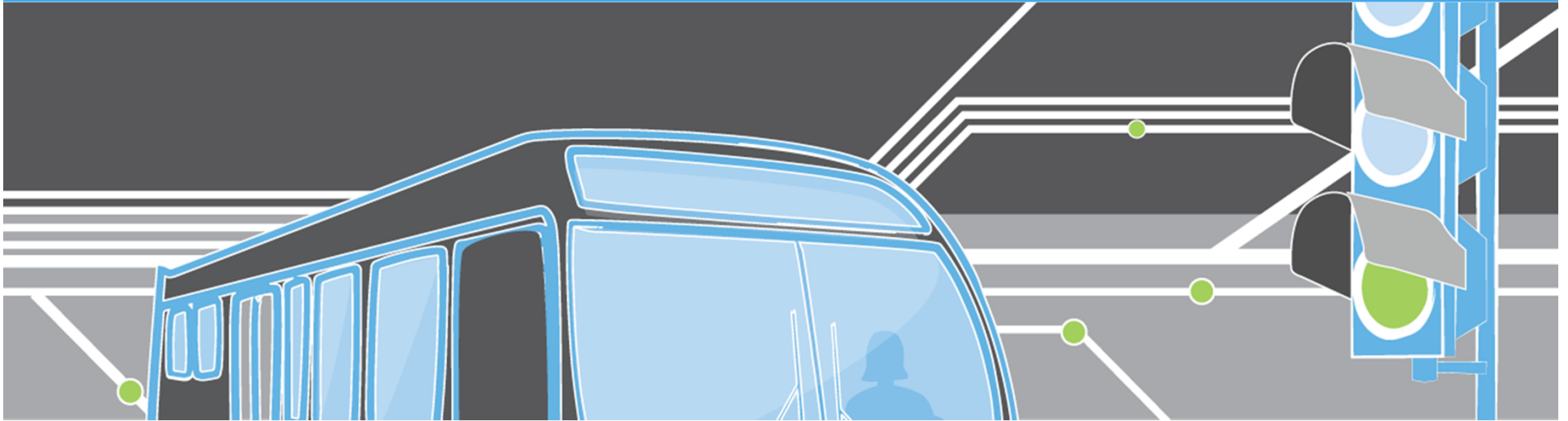
PROJECTS UNDERWAY: RED TRANSIT-ONLY LANES



“If we are truly the ‘transit first city’ we claim to be, we can and should do this.”
~ Donald R.

MUNIFORWARD

MAKING THE SYSTEM SMARTER



**Using state-of-the-art technology
to make our systems run better**

PROJECTS UNDERWAY: TRANSIT SIGNAL PRIORITY



“I am a huge supporter of the plans to add bulb-outs and give the trains priority at signals. This is way past overdue.”
~ Jonathan D.

MUNIFORWARD

ENHANCING SAFETY AND ACCESS



**Making a safer, cleaner system
that is easier to use**



**VISION
ZERO
SF** | **SAFETY
IN ACTION**

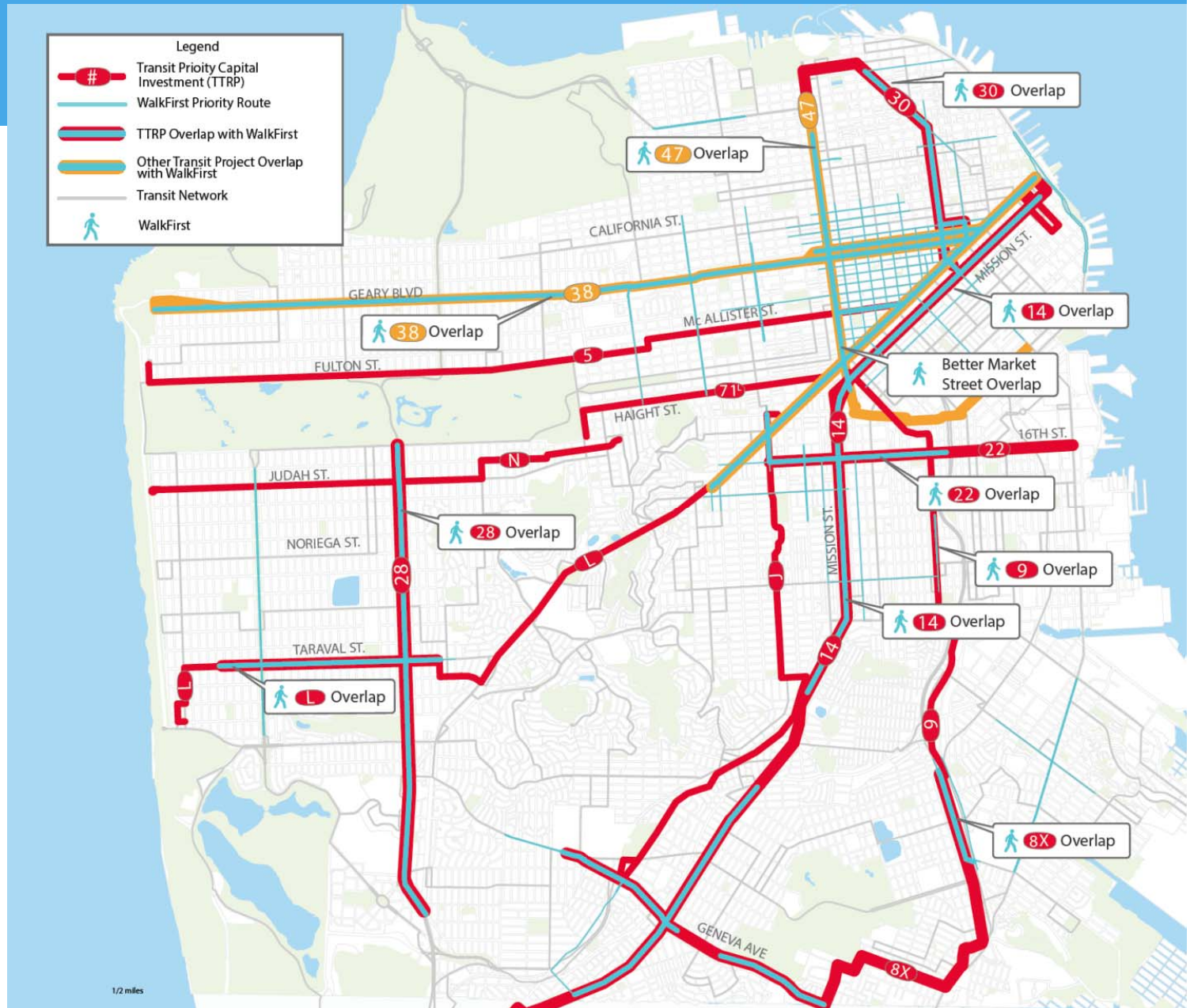
MUNIFORWARD

PROJECTS UNDERWAY: NEW FLEET



New LRVs
arriving in
2016!

Building Vision Zero



TRANSIT PRIORITY & PEDESTRIAN SAFETY PROJECTS

A big part Muni Forward includes engineering improvements—also known as **Transit Priority Projects**—designed to address transit delay, improve reliability, and increase the safety and comfort of pedestrians and transit customers along our most heavily used routes.

- Future Project
- Outreach Underway
- Legislated (awaiting construction)
- Construction Started
- Complete

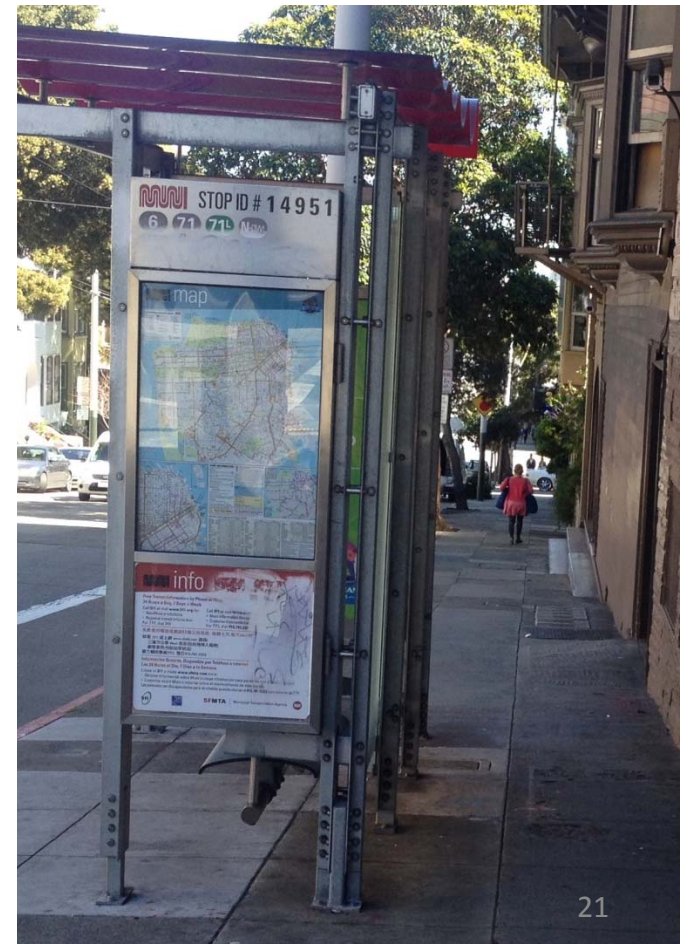


PROGRESS SINCE MARCH 2014

- Fast Track projects on N, 5, 9L, 14, 30, 71 (Legislated March 28)
 - Included initial investments on Haight Street
- Sansome contra flow lane (Legislated Sept. 2)
- 9 San Bruno Rapid Capital Project (Legislated Oct. 17)
- 71 Haight-Noriega Rapid Capital Project (Stanyan St to Laguna St)
- 5 Fulton Rapid Capital Project (6th to Market)

71 HAIGHT-NORIEGA EXISTING CONDITIONS

- Low quality pedestrian environment
- Poor transit reliability
- Crowded buses



PROJECT SUMMARY

Pedestrian safety: Pedestrian Bulbs, Turn Restrictions, Traffic signals

Transit reliability: Bus bulbs, Turn pockets, Transit Signal Priority, Stop Relocation

Crowded buses: Increasing capacity

Public realm: Bulbs and place making features

Haight (from Stanyan to Laguna)

New traffic signals: 10

New bulbs: 44

Stops optimized: 4

Stops removed: 2

Stops lengthened: 2

New transit only lane: 1 block

New right turn pockets: 4

Transit queue jump: 1

New turn restrictions: 3

Parking zone modifications: 15

Net parking removal: 55

BENEFITS

Pedestrian safety

- Addresses primary causes of collisions on Haight Street

Transit reliability

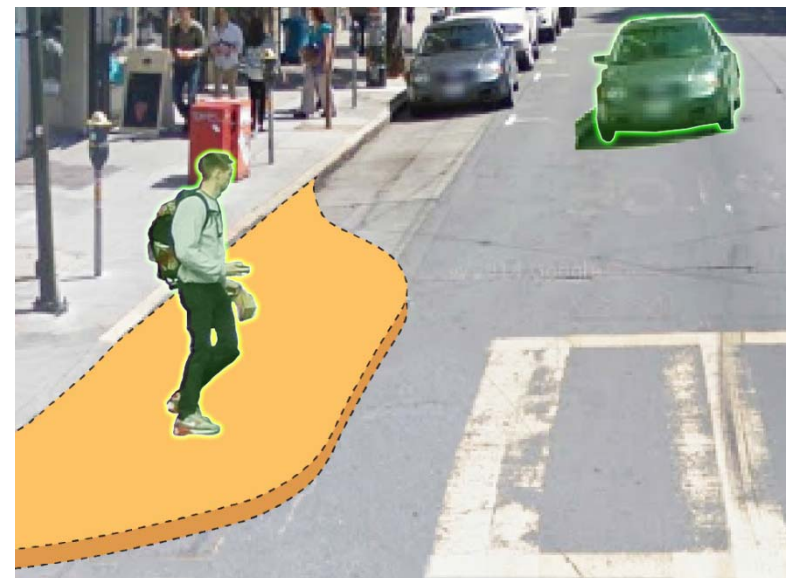
- Expect 25% travel time reduction
- Complement two-way Haight, saves an average of 3 minutes.

Crowded buses

- Capacity increase around 20%

Public realm

- Partnering with community



OUTREACH

Interagency Coordination

- Public Realm with City Planning
- DPW paving coordination
- Wiggle improvement project (PUC and MTA)

Public Meetings

- Booths at 3 community events
- 2 with City Planning (Feb 27 and June 11)
- 2 with Wiggle (Sept 24 and Jan 22)
- 1 Muni Forward specific meeting (June 23)
- 8,500 mailings and 2,000 fliers

Stakeholder Involvement

- Walk SF, HAIA, HANC, CVIA, HAMA

Public Hearing

- September 5



71 HAIGHT-NORIEGA CORRIDOR NEXT STEPS

- **Construction timeline:** Lower Haight (from Masonic to Laguna) part of DPW paving contract.
- **Early implementation:** Implemented transit only lane between Buchannan and Laguna and “no left turn” at Laguna (will inform traffic signal at Haight/Laguna)
- **MTAB Follow up:** Reflect continued work with HAMA

5 FULTON EXISTING CONDITIONS

- Pedestrian environment on Fulton
- Poor transit reliability
- Crowded buses
- Narrow travel lanes



PROJECT SUMMARY

Pedestrian safety: Pedestrian Bulbs, Traffic signals

Transit reliability: Bus bulbs, Turn pockets, Transit Signal Priority, Stop Relocation

Crowded buses: Increasing capacity

Narrow travel lanes: Widen Fulton from Stanyan to Baker

Project (including 5L Pilot)

New traffic signals: 4

New bulbs: 30

Stops optimized: 8

Stops removed: 18

New pedestrian islands: 2

New right turn pockets: 2

New traffic circles: 2

Stops lengthened: 23

Net parking removal: 52

OUTREACH

Interagency Coordination

- DPW paving coordination

Public Meetings

- Spring 2012 - 5 Fulton TTRP Public Workshop
- Summer 2013 - 2 Community Meetings for 5L Pilot Project
- March, 2014 –SFMTA Board approved bus bulbs on outer Fulton (25th-Great Highway) and at McAllister/Fillmore and McAllister/Divisadero
- July, 2014 – Open House
- November, 2014 – Open House

Stakeholder Involvement

- Contacted 28 neighborhood groups and collected over 200 surveys

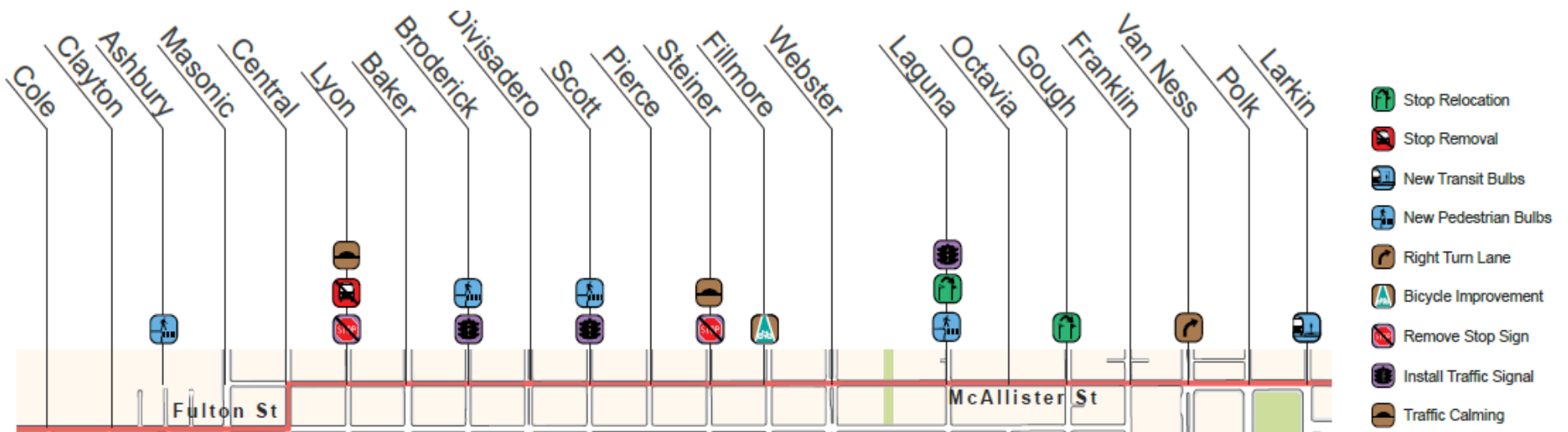
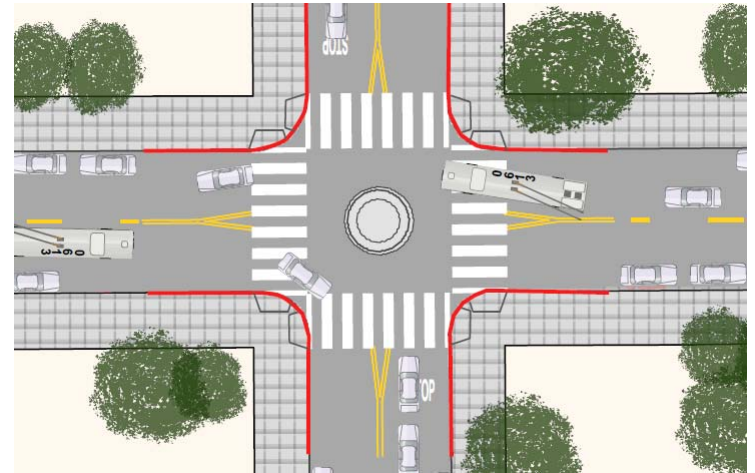
Public Hearing

- September 5, 2014

5 FULTON CORRIDOR NEXT STEPS

UPDATE:

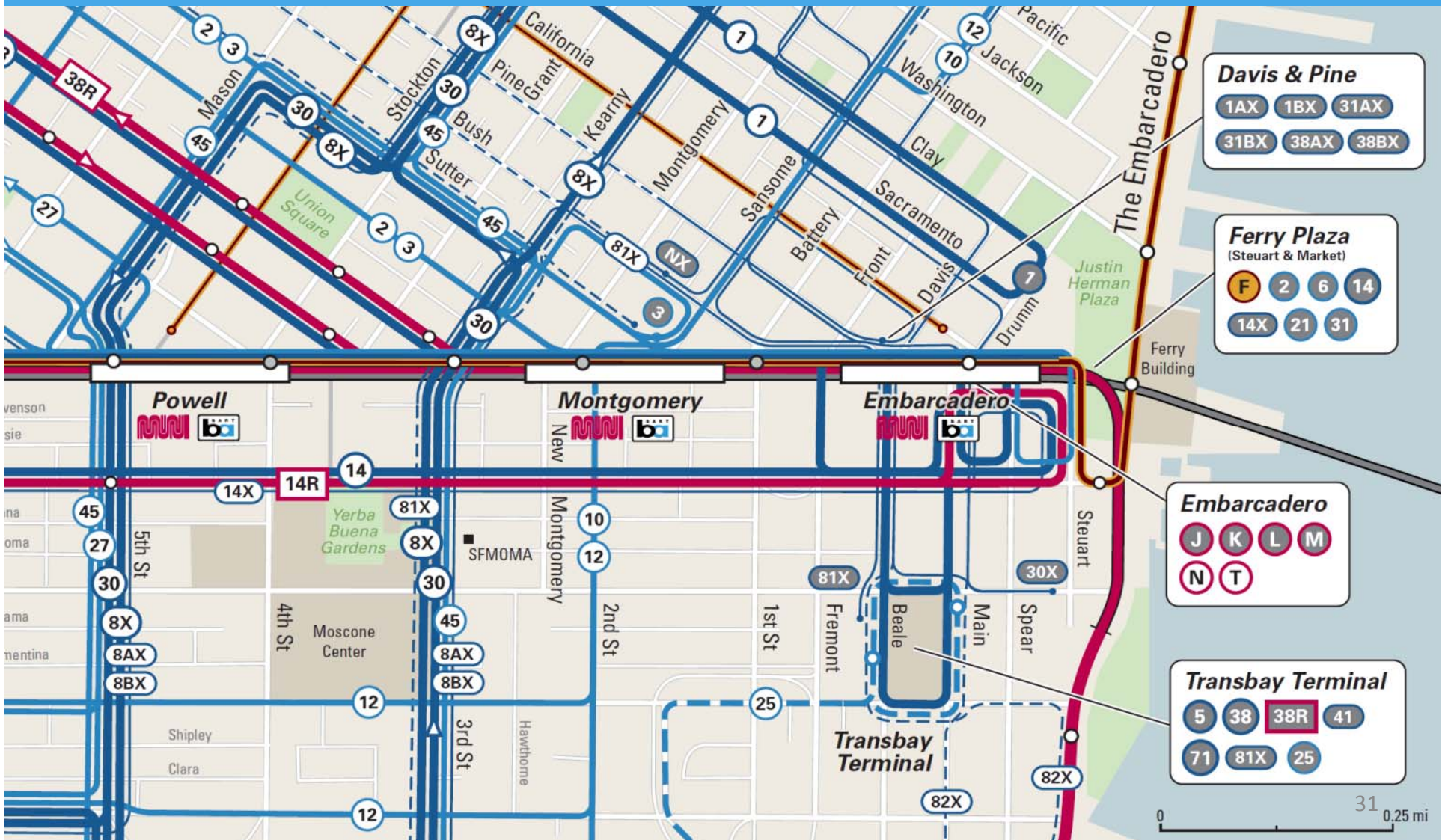
- Compromise proposal
 - Highlighting 2 traffic circles
- Next Steps
 - MTAB anticipated in April



CUSTOMER INFORMATION ENHANCEMENTS

- New map launches in April
- Route signs coming to every stop
- Limited-stop being rebranded as Rapid Bus through route names and shelter enhancements

NEW MAPS TO BE INSTALLED AT ALL SHELTERS



MUNIFORWARD

Rapid is the new Limited.

And more transit priority improvements
are on the way!



**GET ON
BOARD**
MUNIFORWARD.COM

This spring: Muni **Rapid**

The SFMTA is adopting the term “Rapid” for Muni’s Limited-stop routes, currently called Limited or L.

R IS FOR RAPID

With Rapid, route number changes will be rolling out, too:

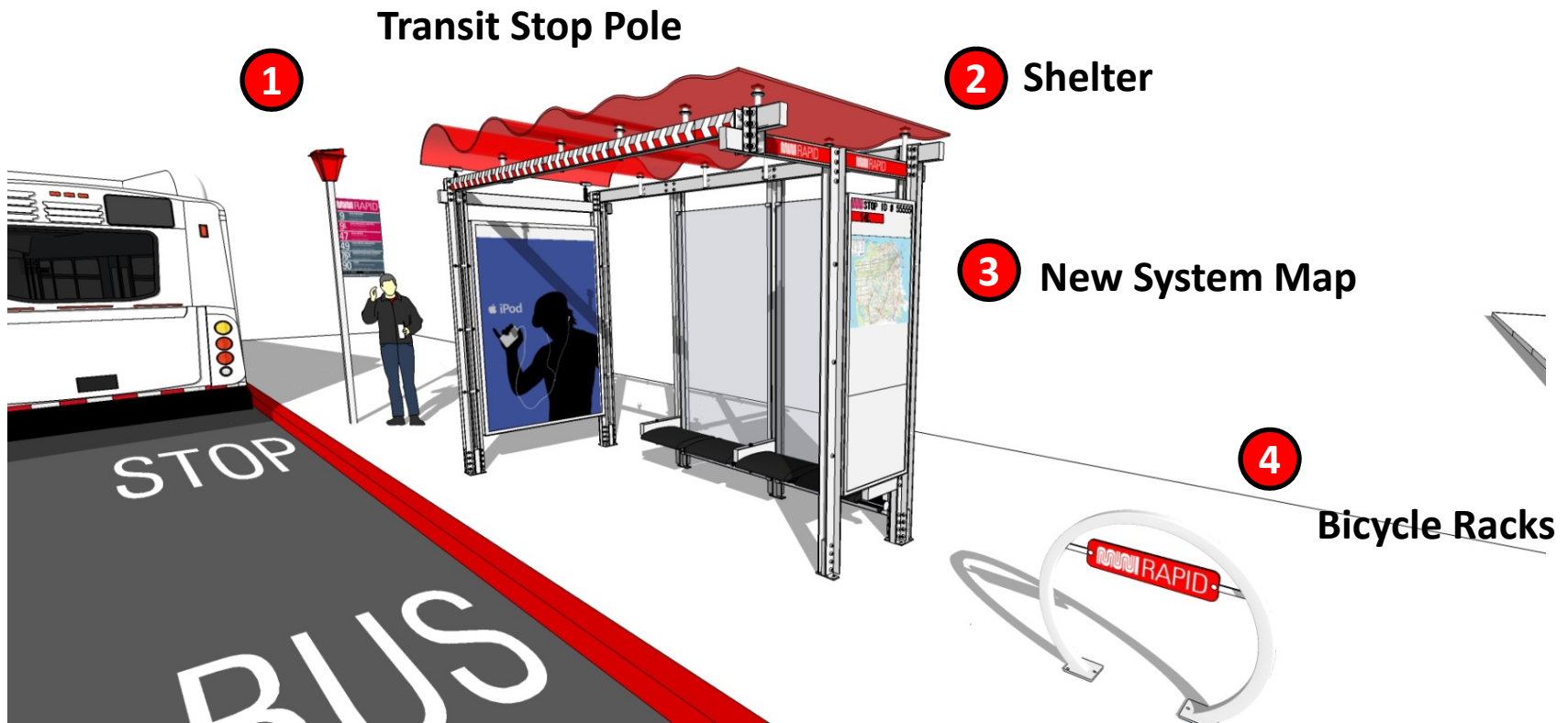
Now	Coming
Limited (e.g. 14L)	Rapid (e.g. 14R)
6 Parnassus	6 Haight-Parnassus
8X Bayshore Express	8 Bayshore Express
16X Noriega Express	7X Noriega Express
17 Parkmerced	57 Parkmerced
33 Stanyan	33 Ashbury-18th
71 Haight-Noriega	7 Haight-Noriega
108 Treasure Island	25 Treasure Island

TRANSIT STOP POLES



<p>MUNI RAPID</p> <p>14R MISSION RAPID To Steuart & Mission Financial District 24 Hours Daily</p> <p>14 MISSION To Steuart & Mission Financial District 24 Hours Daily</p> <p>Mission St & South Van Ness Ave</p> <p>☎ 311 中文 / Español / Français / 日本語 / 한국어 / русский / Tagalog / ព័ត៌មាន វិទ្យុ / ព័ត៌មាន ទូរស័ព្ទ sfmta.com</p> <p>Next Muni? ☎ 511, say "departure times" #17299</p>	<p>MUNI METRO</p> <p>N JUDAH To 4th St & King Caltrain Station Daily ~ 5AM-1AM</p> <p>N OWL To Caltrain Station Daily ~ 1AM-5AM Sat until 6AM, Sun until 8AM</p> <p>9th Ave & Irving St</p> <p>☎ 311 中文 / Español / Français / 日本語 / 한국어 / русский / Tagalog / ព័ត៌មាន វិទ្យុ / ព័ត៌មាន ទូរស័ព្ទ sfmta.com</p> <p>Next Muni? ☎ 511, say "departure times" #13212</p>	<p>MUNI HISTORIC</p> <p>F MARKET & WHARVES To Fisherman's Wharf via Ferry Building Daily ~ 6AM-12:30AM</p> <p>37 CORBETT To Masonic & Haight M-F ~ 6AM-11PM Sat/Sun ~ 8AM-11PM</p> <p>L OWL To Downtown Daily ~ 1AM-5AM Sat until 6AM, Sun until 8AM</p> <p>Market St & Noe St</p> <p>☎ 311 中文 / Español / Français / 日本語 / 한국어 / русский / Tagalog / ព័ត៌មាន វិទ្យុ / ព័ត៌មាន ទូរស័ព្ទ sfmta.com</p> <p>Next Muni? ☎ 511, say "departure times" #15687</p>
--	--	--

RAPID STOP BRANDING ELEMENTS



HOW TO TALK ABOUT MUNI FORWARD

- **Muni Forward:** Safety and reliability, investing in core routes that serve 70% of customers
- **Muni Rapid:** Delivers frequency and reliability on core routes, encompasses all benefits of Limited lines + transit priority projects

MUNIFORWARD

MUNIFORWARD.COM

Search 中文 | Español

Sign Up for Updates

MUNIFORWARD

ABOUT

BENEFITS

PROJECTS UNDERWAY

GET INVOLVED



We have 700,000 daily boardings and take customers all over San Francisco.



MUNIFORWARD

WWW.SFMTA.COM/MUNIFORWARD

MUNI FORWARD

Related Projects

[Muni Forward Implementation Plan](#)

[Muni Forward Transit Priority Project Status](#)

[Muni Forward: Creating a Rapid Network](#)

[Muni Forward: Enhancing Safety and Access](#)

[Muni Forward: Improving Reliability](#)

[Muni Forward: Making the System Smarter](#)

[TEP - Transit Effectiveness Project](#)



MUNIFORWARD



Questions?