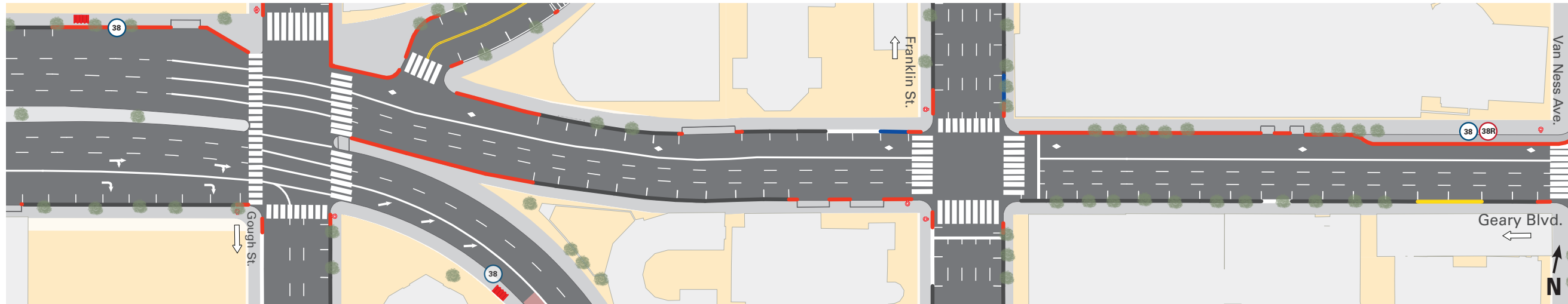


Geary Boulevard: Gough Street to Van Ness Avenue

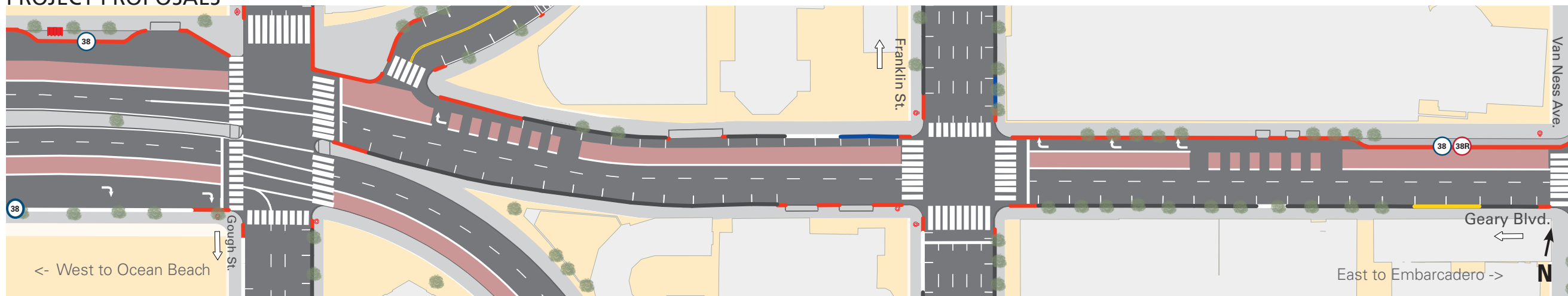
EXISTING CONDITIONS



Summary of Proposals

- Extension of dedicated transit-only lanes
- Relocation of the inbound Gough bus stop westward
- Sidewalk extensions at bus stop at Gough
- Median improvements at crossings (Gough)
- Removal of peak-hour tow-away lane between Van Ness and Gough

PROJECT PROPOSALS



Legend

- | | |
|-----------------------------|---------------------------|
| No parking (red) | 38 Geary stop |
| Accessible parking (blue) | 38R Geary Rapid stop |
| 30-minute parking (green) | Transit-only lanes |
| Commercial loading (yellow) | Transit shelter |
| General parking (gray) | Sidewalk extension "bulb" |
| Passenger loading (white) | New curb ramp |
| Public parking | |

PROJECT DRAWINGS

Open House Series
June 2018

