

歡迎來到三藩市交通局（SFMTA）自助開放參觀日活動！

請審閱這些資料，然後分享您的意見，以便讓我們瞭解您對擬定的公共交通及安全改善措施的看法。

Geary 街改善工程是 Geary 街改善的第二階段工程，擬優化 34 大道與 Stanyan 街之間的路段，改善 Muni 38 Geary 公車線路運行狀況，並解決交通安全問題。

交通局根據 2021 年秋季從 600 多名社區成員那裏收集的回饋意見起草了設計方案。請審閱這些工程資料。然後，請完成一份簡短的調查，以便讓我們知道您對擬定的公共交通及安全改善措施的看法。

我們將依據您的回饋意見制定最終工程提案，於 2022 年稍晚呈遞三藩市交通局 (SFMTA) 董事會審議。

工程提案概述：

- 在 28 大道和 15 大道之間設置公車專用道。為了騰出道路行車空間，Geary 街的斜角停車位改為平行停車位。
- 為了提高公共交通效率，遷移 十一 處公車站，取消兩處小間距車站。
- 升級交通號系統；增設加寬的公車站；延長太短而無法同時容納兩輛公車的站區，包括 Park Presidio 街的車站。
- 改善安全的措施，如加寬十字路口處人行道；改善中央安全島，以及在重要十字路口實施左轉限制。
- 如果實施以上措施，街區每個街區平均會減少大約兩個停車位，因此交通局提議在相交叉的街道增加停車位，改變路邊空間設計以滿足商家需求，例如在 Central Richmond 延長平日夜間及週日碼錶收費停車時間。

Geary 街改善工程

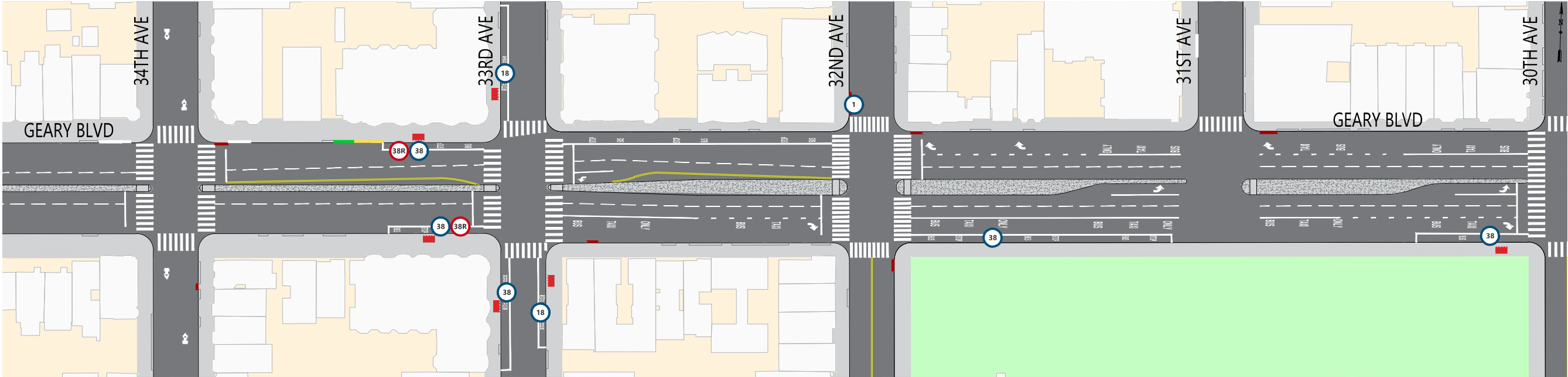


地圖顯示公車站變動修訂提案。將公車站由十字路口近端移至遠端（過了交通號誌以後），能讓公車避免因遇紅燈而引起的延誤，改善安全和交通情況。備註：依據社區居民的意見，原擬遷移 25 大道上出城方向公車站的提案已被否決。

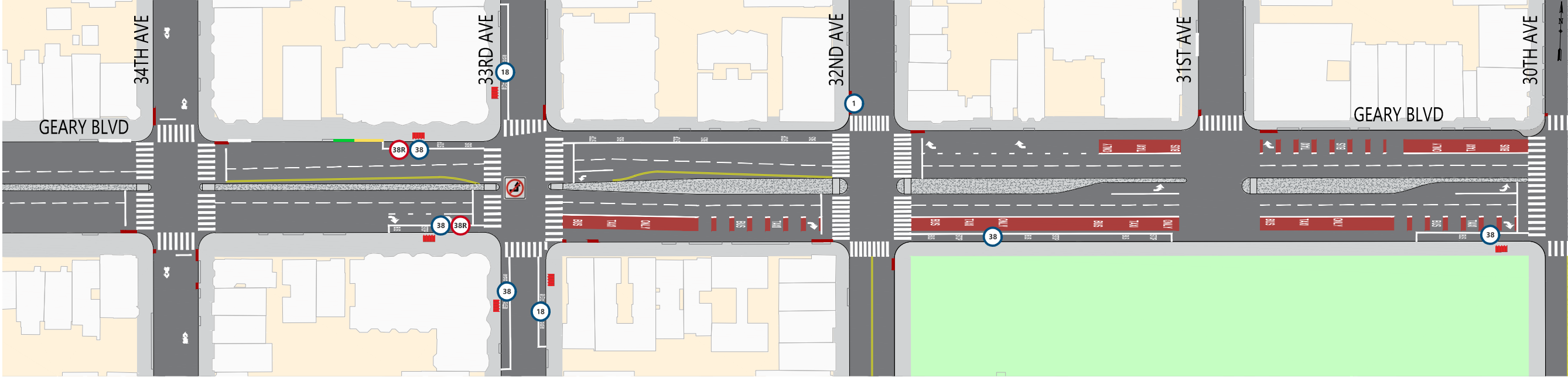


圖示說明提案中其他安全改善措施，如增設公車專用道、擴展路緣（加寬人行道）以及左轉限制。工程中的所有十字路口都將完成標準化改善，包括擴充中央安全島並延長行人通行時間。Geary 街在 14 大道至 28 大道之間路段的碼錶收費停車將延長至晚上 10 時，並增加週日中午至晚 6 時收費時段。

現有情況



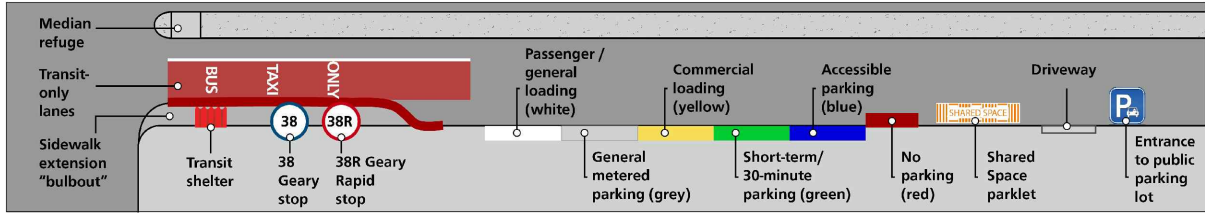
建議方案 (Outreach Round 2)



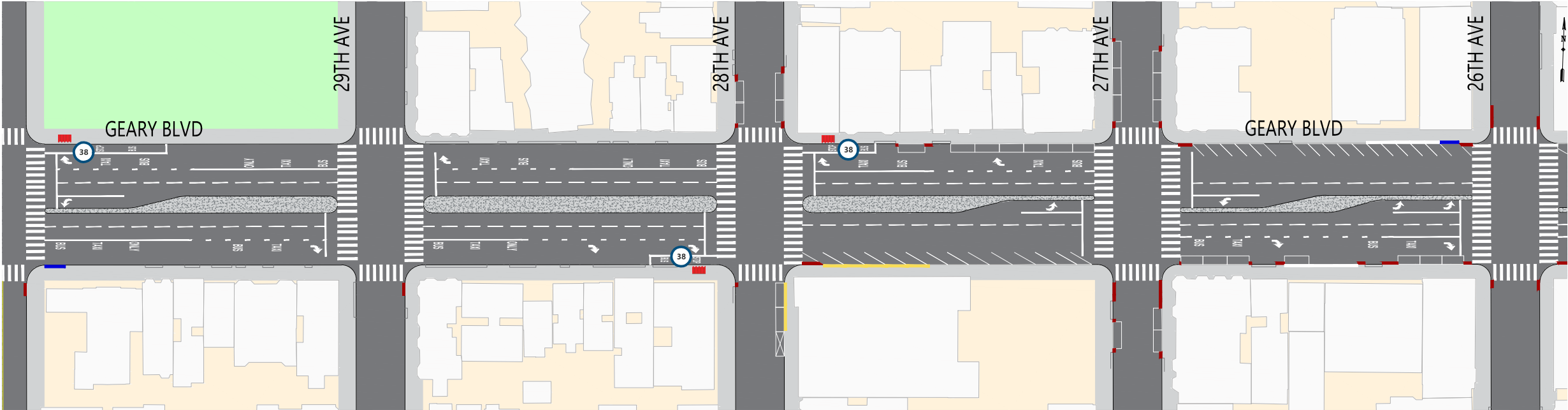
SUMMARY OF PROPOSALS

- Dedicated red transit-only lanes east of 33rd Ave
- Pedestrian bulbouts at the corners of 30th Ave
- Restriction of the left-turn from eastbound Geary onto 33rd Ave
- Traffic safety treatments including daylighting and leading pedestrian signals

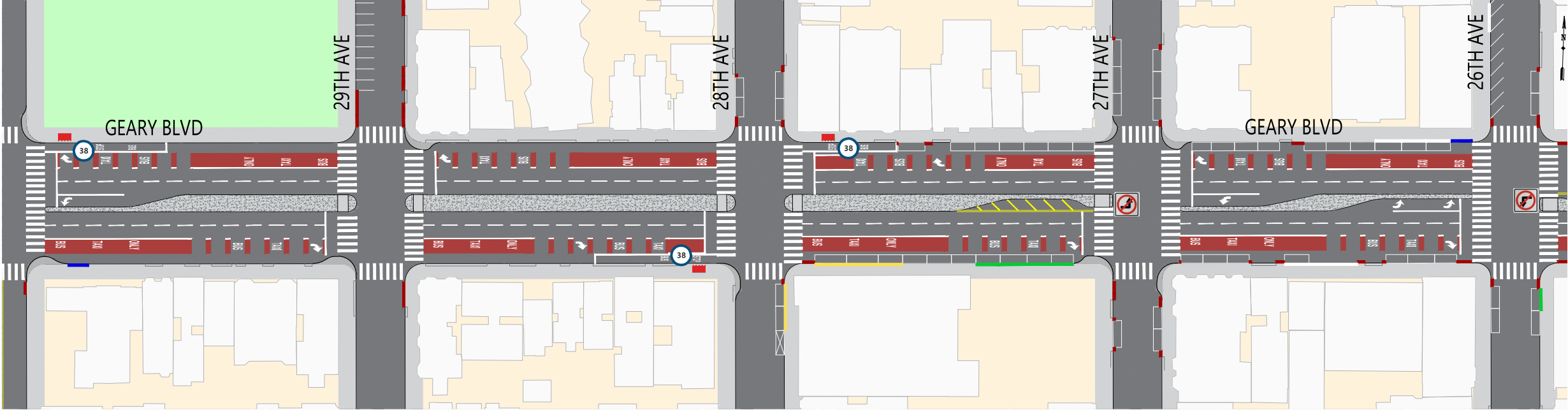
圖解



現有情況



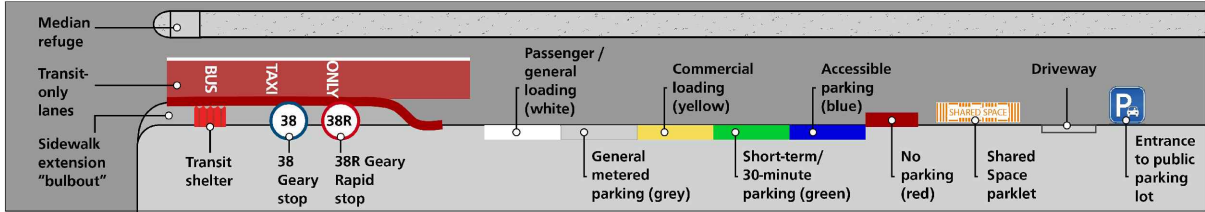
建議方案 (Outreach Round 2)



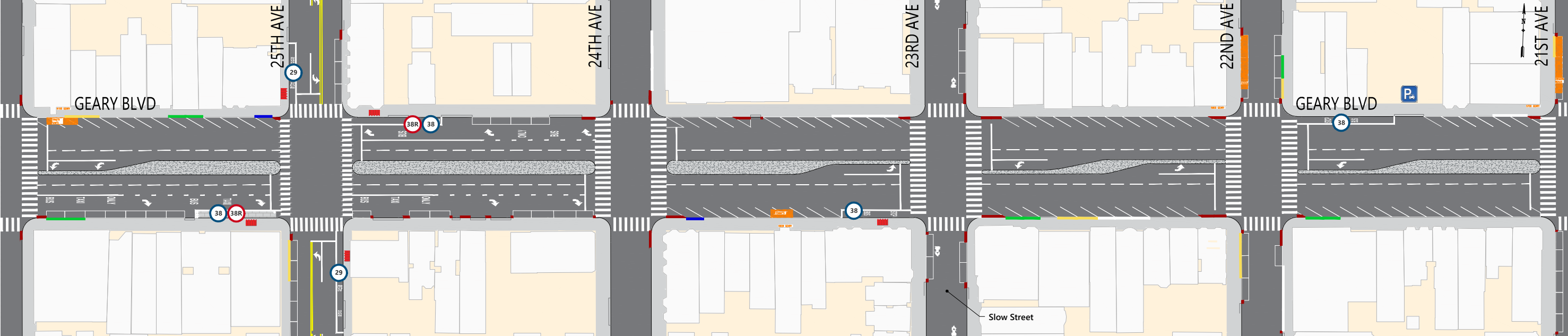
SUMMARY OF PROPOSALS

- New dedicated red transit-only lanes
 - Extension of the 28th Ave local bus zones
 - Pedestrian bulbouts at the corners of 30th, 29th, 28th and 27th avenues
 - Restriction of the left-turns from eastbound Geary onto 27th Ave and westbound Geary onto 26th Ave
 - Updated parking and loading regulations east of 28th Ave based on merchant and survey feedback*
 - New angled parking on 29th and 26th avenues, north of Geary
 - Traffic safety treatments including expanded median refuges, day lighting and leading pedestrian signals
- *proposal includes extended parking meter hours on Geary to add evenings (6-10pm) and Sundays (noon-6pm), without parking time-limits in the new time bands

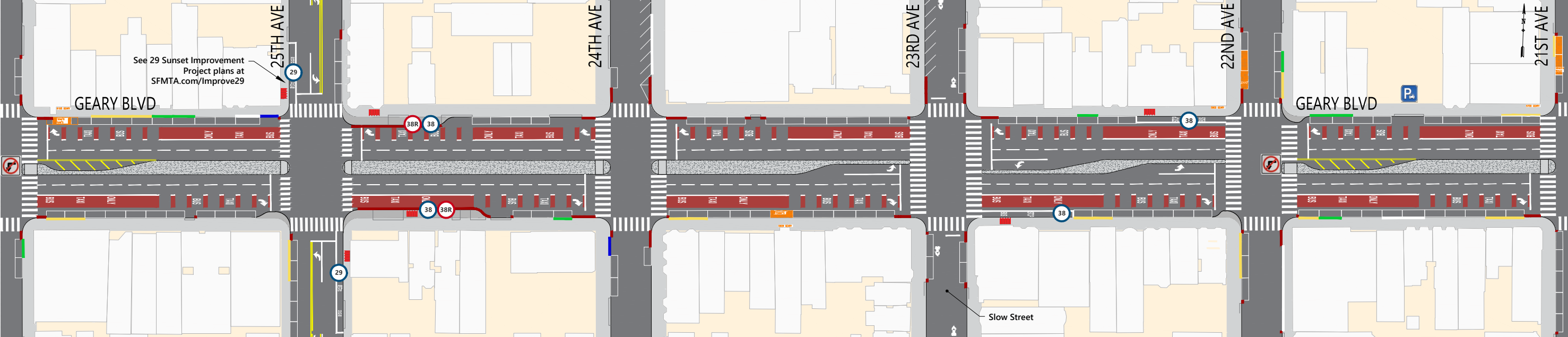
圖解



現有情況



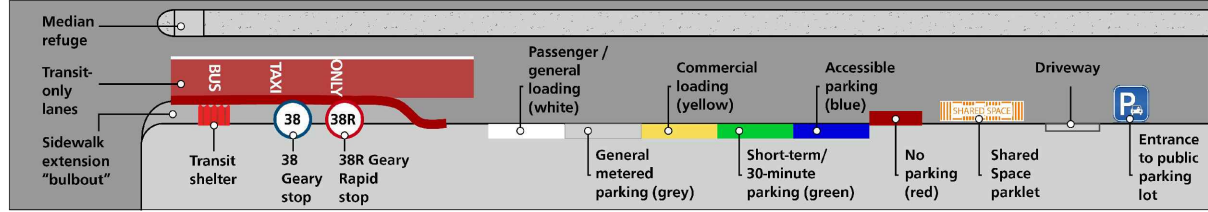
建議方案 (Outreach Round 2)



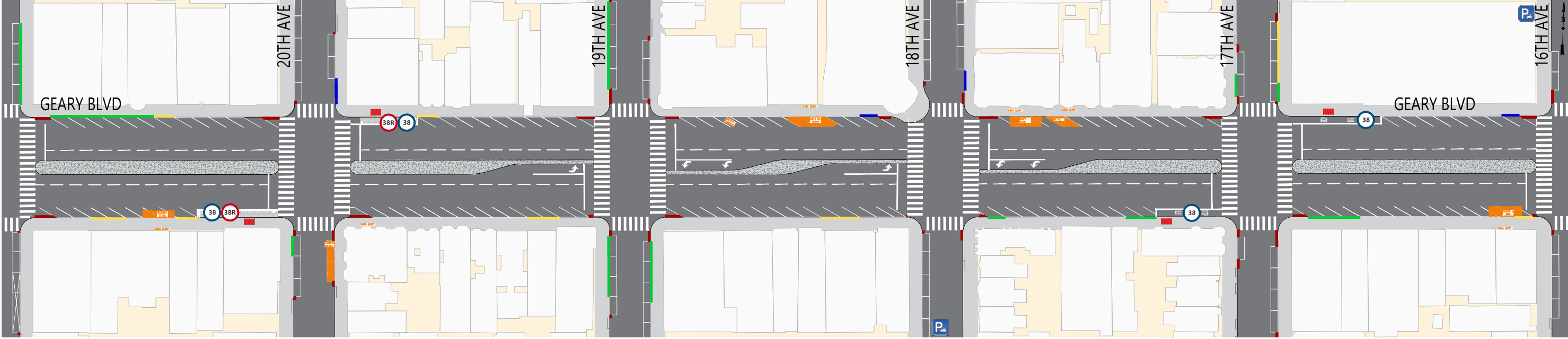
SUMMARY OF PROPOSALS

- New dedicated red transit-only lanes
 - Relocation of the inbound 25th Ave Rapid stop across the street, with new widened sidewalks
 - Relocation of the 22nd/23rd Ave local stops across the street
 - Pedestrian bulbouts at the corners of 25th and 22nd avenues
 - Restriction of the left-turns from westbound Geary onto 26th and 22nd avenues
 - Updated parking and loading regulations based on merchant and survey feedback*
 - New angled parking on 24th and 23rd avenues, north of Geary
 - Traffic safety treatments including expanded median refuges, daylighting and leading pedestrian signals
- *proposal includes extended parking meter hours on Geary to add evenings (6-10pm) and Sundays (noon-6pm), without parking time-limits in the new time bands

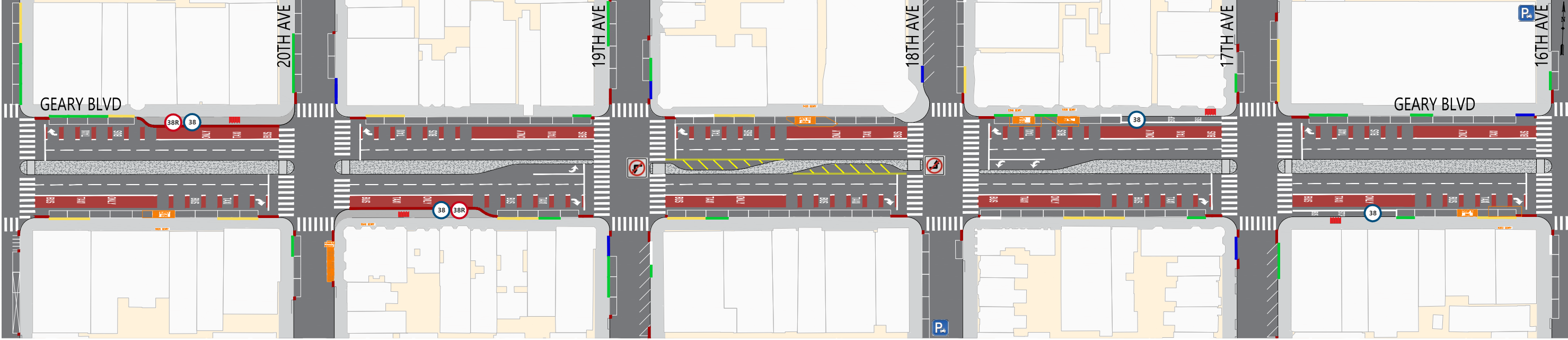
圖解



現有情況



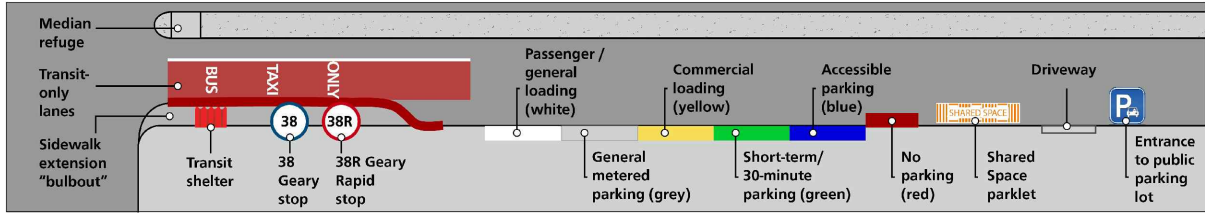
建議方案 (Outreach Round 2)



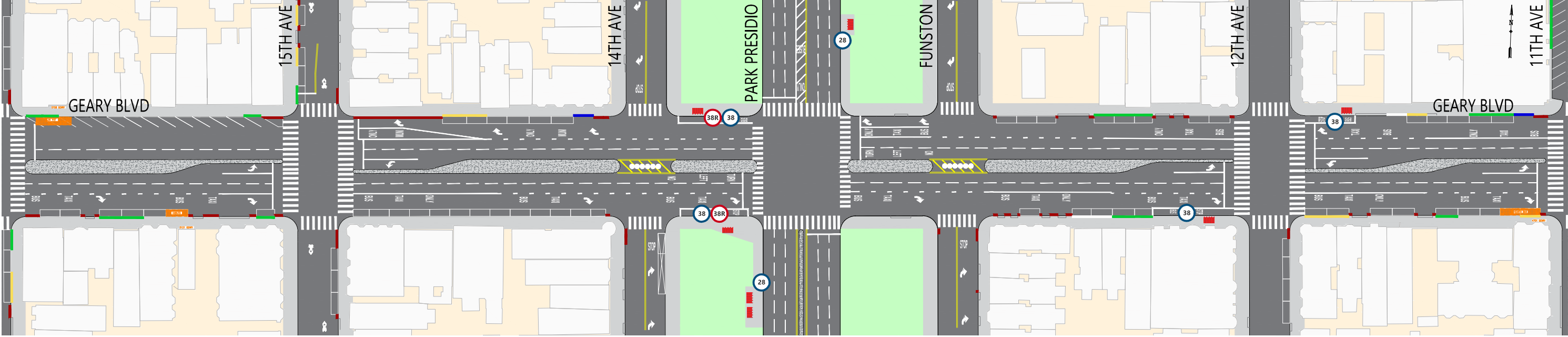
SUMMARY OF PROPOSALS

- New dedicated red transit-only lanes
 - Relocation of the 20th Ave Rapid stops across the street, with new widened sidewalks
 - Relocation of the 17th Ave local stops across the street
 - Restriction of the left-turns from westbound Geary onto 19th Ave and eastbound Geary onto 18th Ave
 - Updated parking and loading regulations based on merchant and survey feedback*
 - New angled parking on 19th and 17th avenues, south of Geary, and on 18th Ave, north of Geary
 - Traffic safety treatments including expanded median refuges, day lighting and leading pedestrian signals
- *proposal includes extended parking meter hours on Geary to add evenings (6-10pm) and Sundays (noon-6pm), without parking time-limits in the new time bands

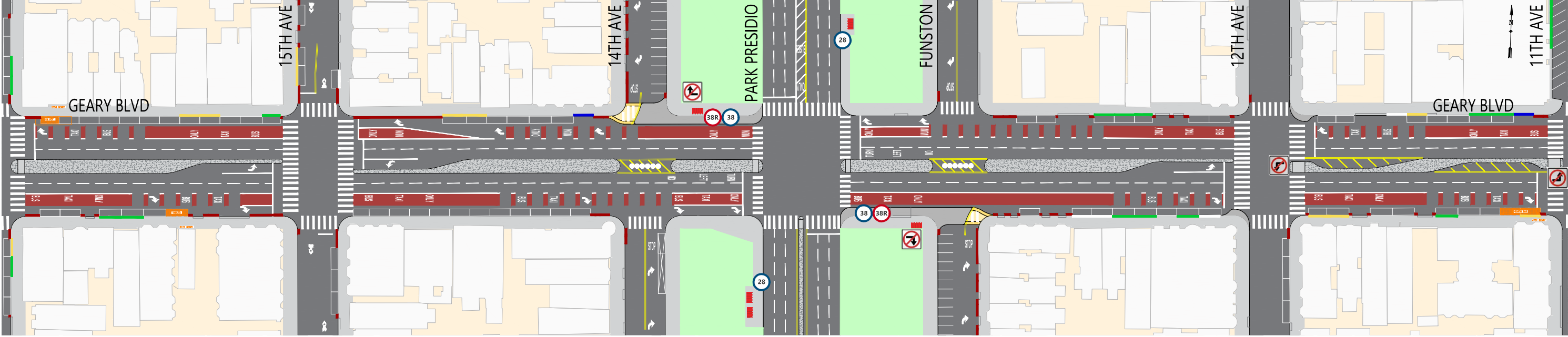
圖解



現有情況



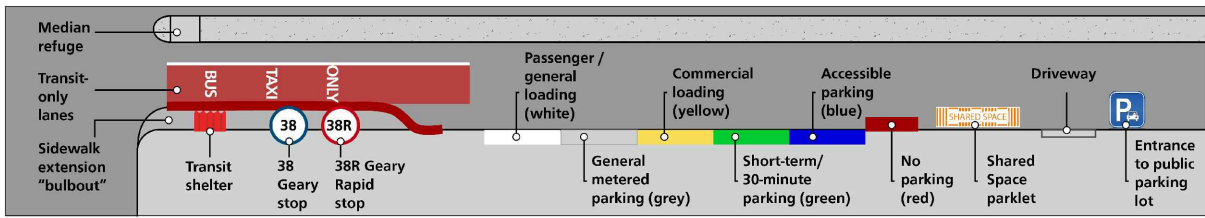
建議方案 (Outreach Round 2)



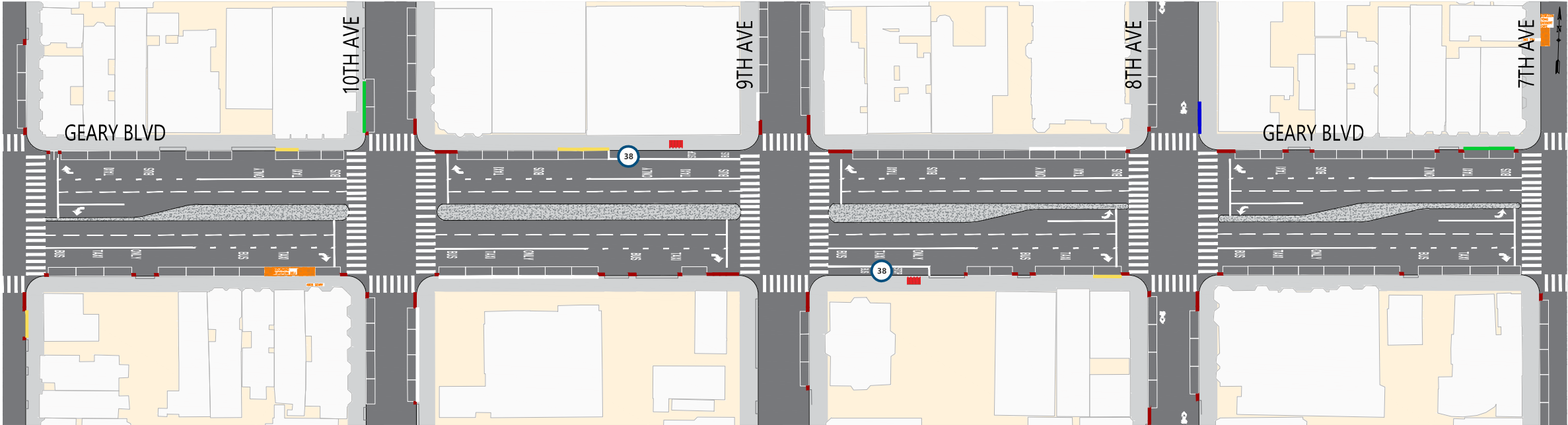
SUMMARY OF PROPOSALS

- New dedicated red transit-only lanes
 - Relocation of the inbound Park Presidio Rapid stop across the street
 - Sidewalk extensions at Park Presidio northwest and southeast corners that restrict right-turns from Geary onto 14th Ave northbound and Funston Ave southbound
 - Removal of the 12th Ave local stops
 - Pedestrian bulbouts at the corners of 12th and 11th avenues
 - Restriction of the left-turns from westbound Geary onto 12th Ave and eastbound Geary onto 11th Ave
 - Updated parking and loading regulations based on merchant and survey feedback*
 - New angled parking on 14th Ave, north of Geary, and Funston Ave, south of Geary
 - Traffic safety treatments including expanded median refuges, day lighting and leading pedestrian signals
- *proposal includes extended parking meter hours on Geary to add evenings (6-10pm) and Sundays (noon-6pm), without parking time-limits in the new time bands

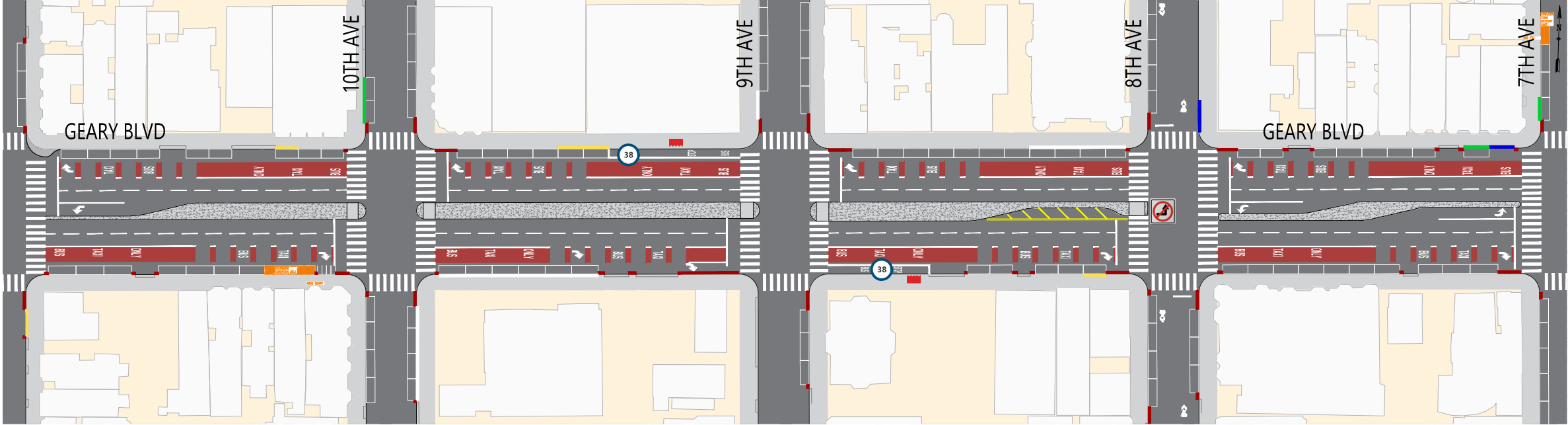
圖解



現有情況



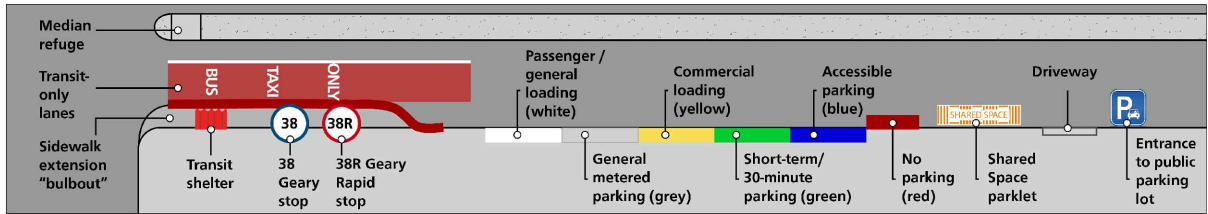
建議方案 (Outreach Round 2)



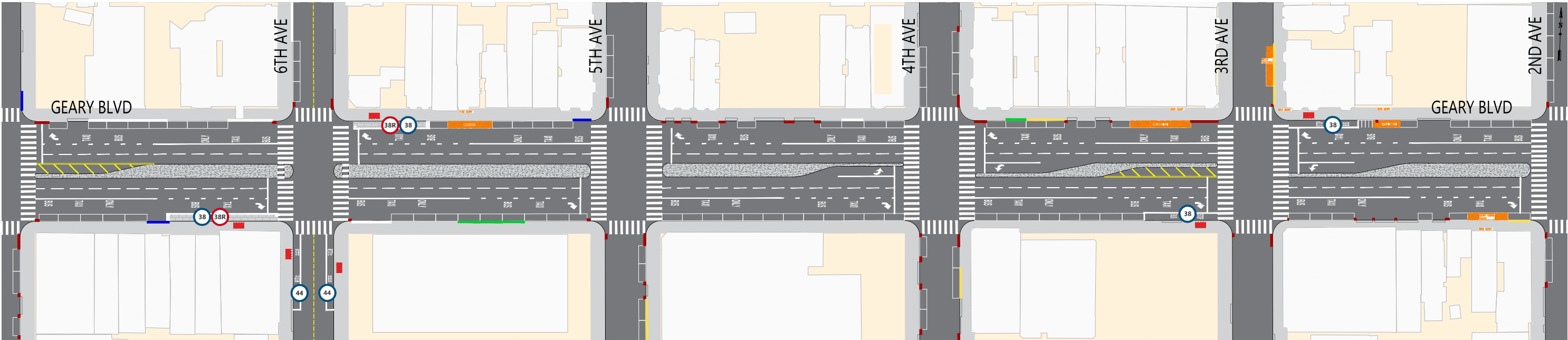
SUMMARY OF PROPOSALS

- Dedicated red transit-only lanes
- Pedestrian bulbout at the corner of 11th Ave
- Restriction of the left-turn from eastbound Geary onto 8th Ave
- Traffic safety treatments including expanded median refuges, daylighting and leading pedestrian signals

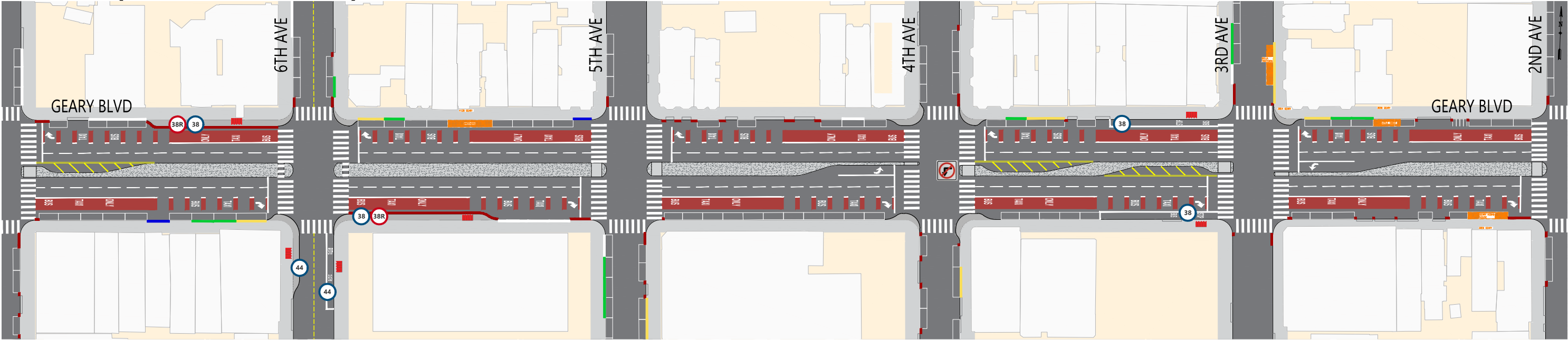
圖解



現有情況



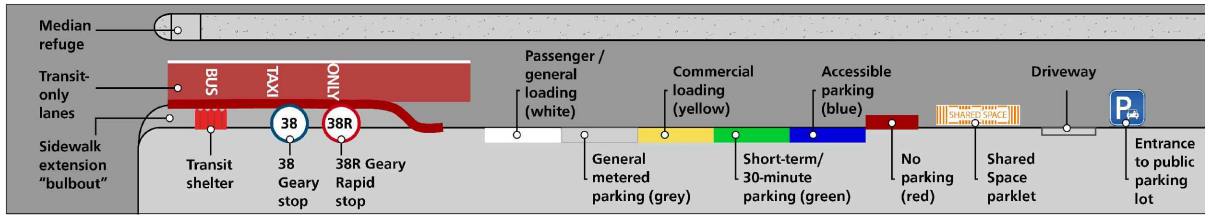
建議方案 (Outreach Round 2)



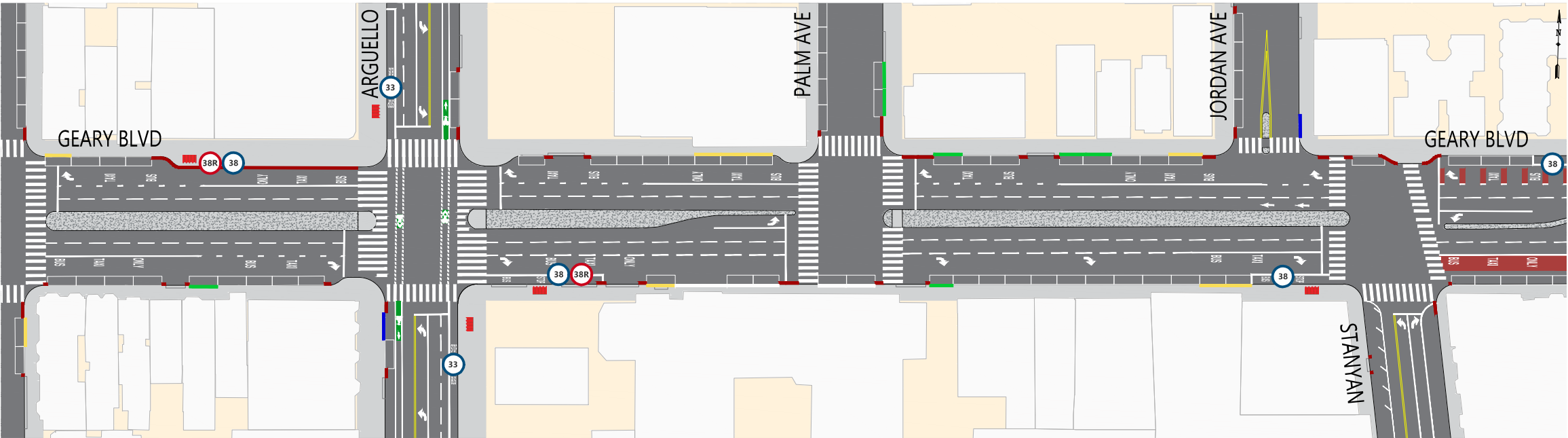
SUMMARY OF PROPOSALS

- Dedicated red transit-only lanes
- Relocation of the 6th Ave Rapid stops across the street, with new widened sidewalks
- Relocation of the outbound 3rd Ave local stop across the street
- Pedestrian bulbouts at the corners of 6th, 4th and 3rd avenues
- Restriction of the left-turn from westbound Geary onto 4th Ave
- Traffic safety treatments including expanded median refuges, daylighting and leading pedestrian signals

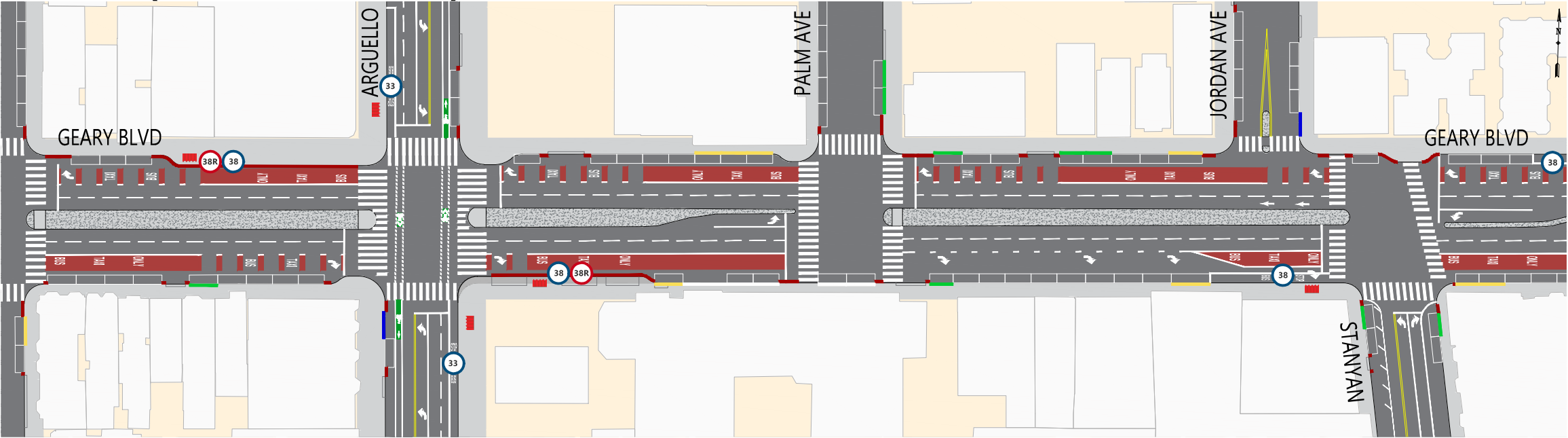
圖解



現有情況



建議方案 (Outreach Round 2)



SUMMARY OF PROPOSALS

- Dedicated red transit-only lanes
- Extension of the inbound Arguello Rapid stop, with new widened sidewalks
- Updated parking and loading regulations at Stanyan Street
- Traffic safety treatments including expanded median refuges, day lighting and leading pedestrian signals

圖解

