

# Geary Boulevard Improvement Project



## Project Timeline



## Share your feedback about proposed transit and safety improvements

### Welcome! Goals of this open house:

The Geary Boulevard Improvement Project is the second phase of improvements on Geary Boulevard, proposed between 34th Avenue and Stanyan Street to improve Muni's 38 Geary bus service and address traffic safety.

In fall 2021 we asked neighbors about their priorities for Geary. Thanks to input from over 600 community members, the SFMTA has used this feedback to draft the detailed project design. Now we'd like to hear what you think about the details. Review these project materials and take a short survey to let us know what you think about these proposed changes.

We'll use your input to help create the final project proposal, to be considered for approval later in 2022 by the SFMTA Board of Directors.

### Overview of project proposals:

- Installing transit lanes between 28th and 15th avenues. To make room, angled parking would be converted to parallel parking.
- Relocating 11 bus stops and removing two closely-spaced stops to improve transit performance.
- Traffic signal upgrades, new bus bulb-outs and lengthening bus zones that are too short to accommodate two buses.
- Safety improvements, including pedestrian bulb-outs, daylighting, expanded median refuges and left-turn restrictions at key intersections.

To offset the loss of about two parking spaces per block face on average, we're proposing to increase parking spaces on side streets and make curb space changes to accommodate merchant needs, including evening and Sunday metering in Central Richmond.



[SFMTA.com/ImproveGeary](https://www.sfmta.com/improvegeary)

# Geary Boulevard Improvement Project



## Legend

- **38 Geary bus stop: no changes**  
38Geary公車站: 沒有變動  
Остановка автобуса № 38 Geary: без изменений 38R
- Ⓡ **38R Geary Rapid bus stop: no changes**  
38RGeary快車公車站: 沒有變動  
Остановка автобуса № 38R Geary Rapid: без изменений
- ⊗ **Bus stop proposed for removal**  
擬取消公車站  
Автобусная остановка, которую предлагается удалить
- ⊗➡● **Proposed 38 Geary bus stop relocation**  
擬遷移 38 Geary 公車站  
Предлагаемый перенос остановки для автобусов 38 Geary
- ⊗➡Ⓡ **Proposed 38R Geary Rapid bus stop relocation**  
擬遷移 38R Geary Rapid 公車站  
Предлагаемый перенос остановки для автобусов 38R Geary Rapid

## Bus Stop Changes 調整巴士站

Изменения Касательно Автобусных Остановок

Some changes to bus stops on Geary Boulevard are being proposed to improve the speed, reliability and convenience of your trip on the 38 Geary and 38R Geary Rapid.

A majority of respondents who completed the fall 2021 survey said they support all of the proposed bus stop changes. The SFMTA is recommending to maintain most of the original proposals. However, the bus stop relocation at 25th Avenue outbound has been dropped based on feedback from neighboring stakeholders.

## Proposed changes:

- Moving bus stops from the nearside of intersections to the far side, so buses don't get stopped at red lights as often
- Removing closely-spaced stops at 12th Ave to improve travel time reliability
- Adding bus bulb-outs to the Park Presidio stops. Would require turn restrictions from Geary onto Funston and 14th avenues (learn more at [SFMTA.com/ParkPresidioSurvey](https://sfmta.com/ParkPresidioSurvey))



[SFMTA.com/ImproveGeary](https://sfmta.com/ImproveGeary)

# Geary Boulevard Improvement Project



## Geary Boulevard Improvement Project Proposals

Geary 街 交通改善工程提案 / Предложения в рамках проекта модернизации Geary

- Existing side-running transit lanes / 現有側邊行駛公交車道 / Существующие боковые полосы для движения общественного транспорта
- New side-running transit lanes / 新的側邊行駛公車專用道 / Новые боковые полосы для движения общественного транспорта
- New bus bulb-out (sidewalk extension at bus stop) / 在公車站增設人行道拓寬 / Новое расширение тротуара на автобусных остановках
- New pedestrian bulb-out (sidewalk extension at intersection) / 在十字路口增設人行道拓寬 / Новое расширение тротуара на перекрестке (для пешеходов)
- New turn restriction from Geary / Geary 街 新設轉彎限制 / Новое ограничение поворота (движение от Geary)
- Existing left-turn okay from Geary / 許可 Geary 街 現有的左轉 / Существующий поворот налево (движение от Geary одобрен)



## Proposed Transit and Safety Improvements

The diagram above illustrates proposed changes, including new transit lanes, pedestrian bulb-outs (sidewalk extensions at intersection corners) and left-turn restrictions to improve safety. All project intersections would receive standard treatments such as daylighting, expanded median refuges and longer pedestrian walk times. To improve parking availability along the merchant corridor in Central Richmond, the meter hours on Geary Boulevard (14th to 28th avenues) are proposed to be extended to 10:00 p.m. and also include Sundays from noon to 6:00 p.m.

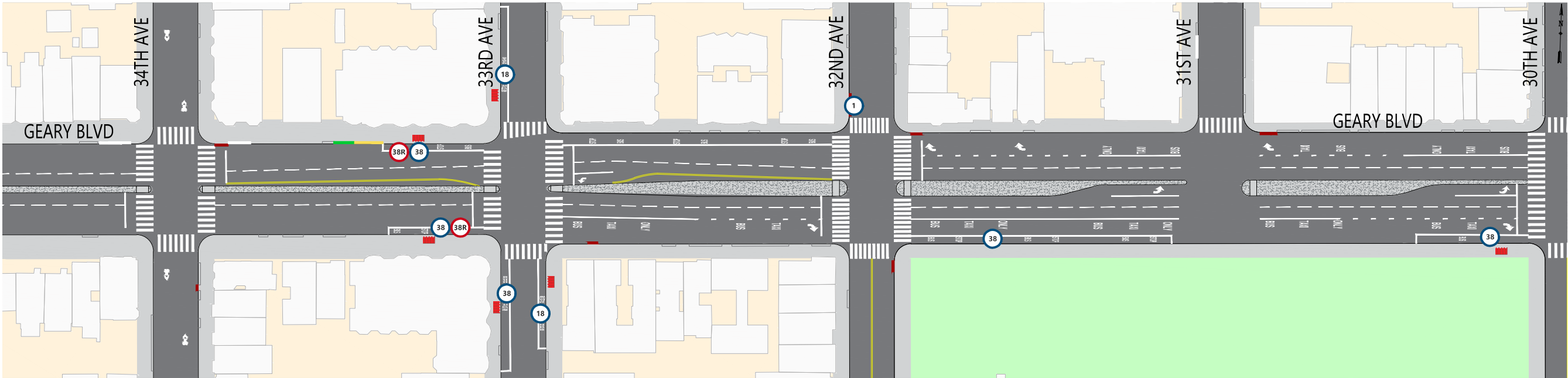
Construction would be coordinated with utility upgrades, as many sewer and water pipes under Geary are over 100 years old.



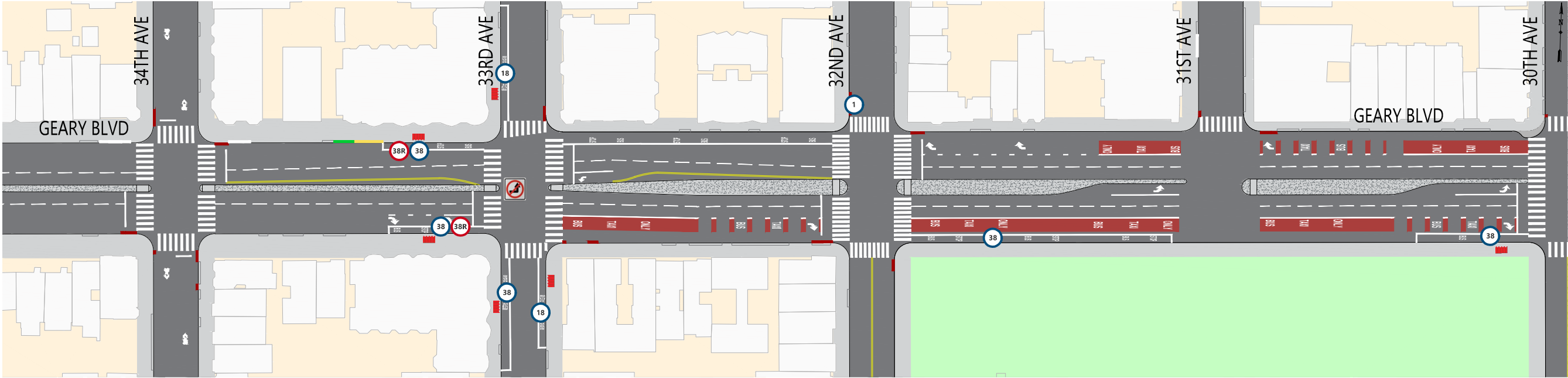
[SFMTA.com/ImproveGeary](https://www.sfmta.com/improvegeary)



## EXISTING CONDITIONS



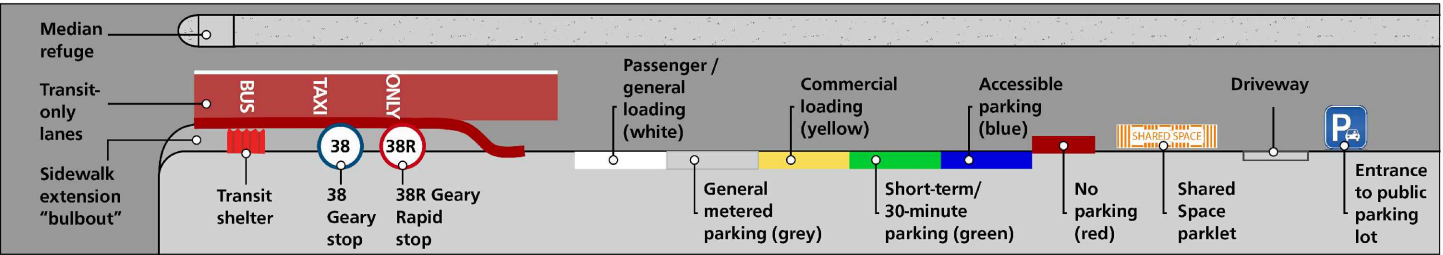
## PROJECT PROPOSALS (Outreach Round 2)



## SUMMARY OF PROPOSALS

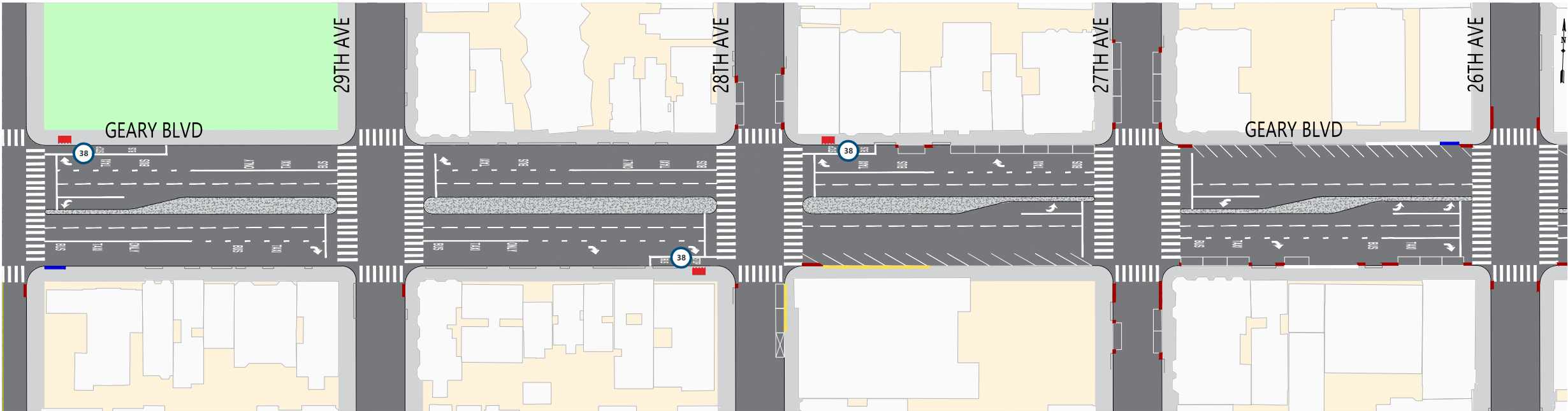
- Dedicated red transit-only lanes east of 33rd Ave
- Pedestrian bulbouts at the corners of 30th Ave
- Restriction of the left-turn from eastbound Geary onto 33rd Ave
- Traffic safety treatments including daylighting and leading pedestrian signals

## LEGEND

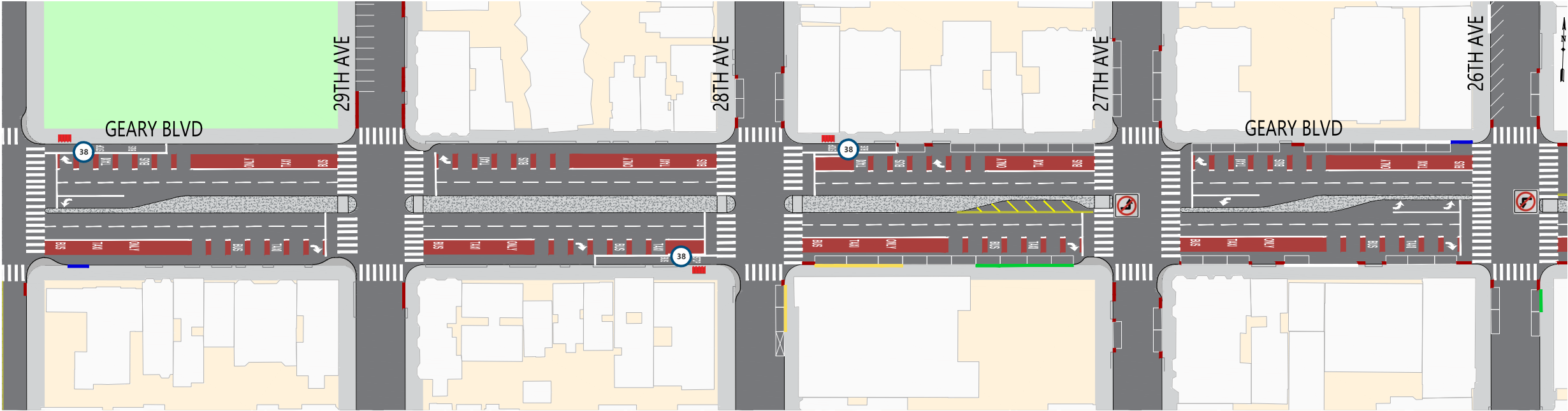




## EXISTING CONDITIONS



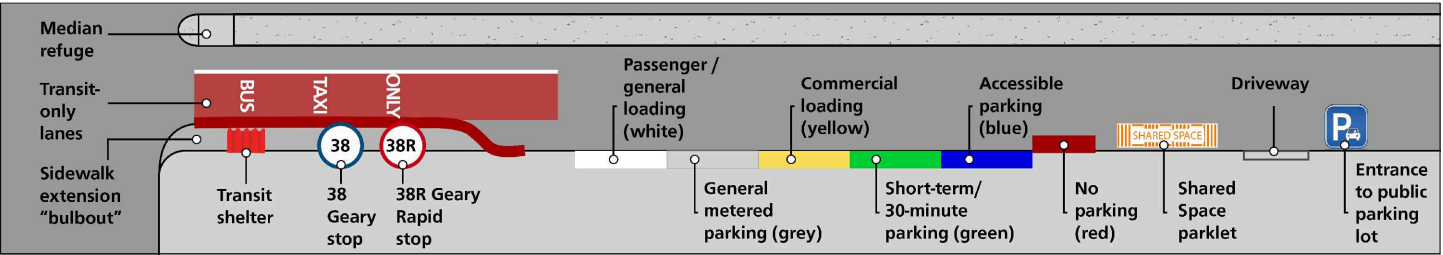
## PROJECT PROPOSALS (Outreach Round 2)



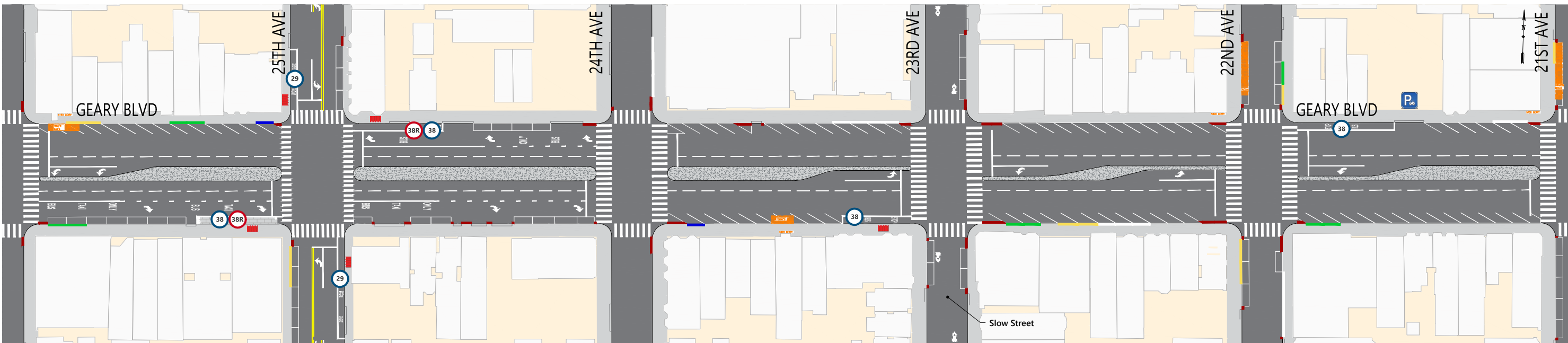
## SUMMARY OF PROPOSALS

- New dedicated red transit-only lanes
  - Extension of the 28th Ave local bus zones
  - Pedestrian bulbouts at the corners of 30th, 29th, 28th and 27th avenues
  - Restriction of the left-turns from eastbound Geary onto 27th Ave and westbound Geary onto 26th Ave
  - Updated parking and loading regulations east of 28th Ave based on merchant and survey feedback\*
  - New angled parking on 29th and 26th avenues, north of Geary
  - Traffic safety treatments including expanded median refuges, day lighting and leading pedestrian signals
- \*proposal includes extended parking meter hours on Geary to add evenings (6-10pm) and Sundays (noon-6pm), without parking time-limits in the new time bands

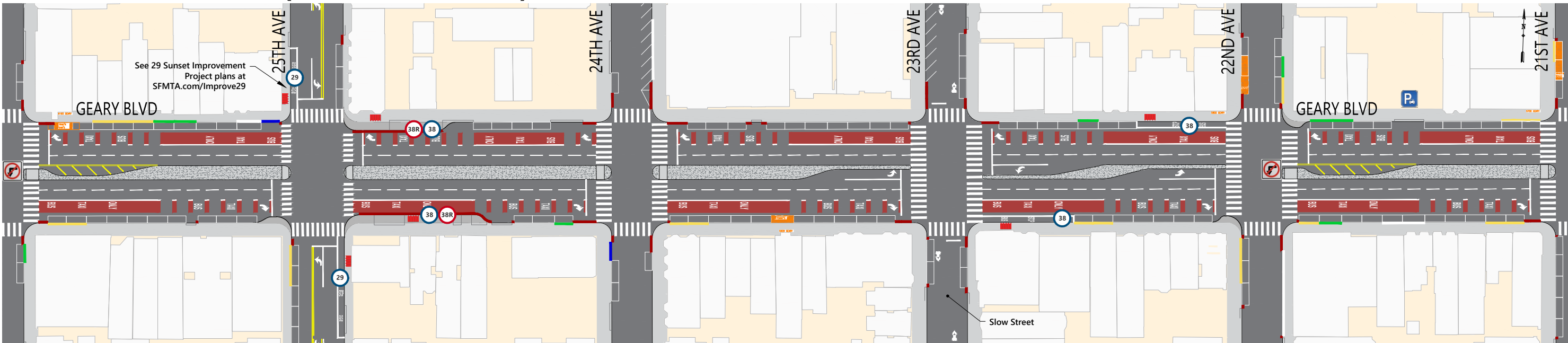
## LEGEND



## EXISTING CONDITIONS



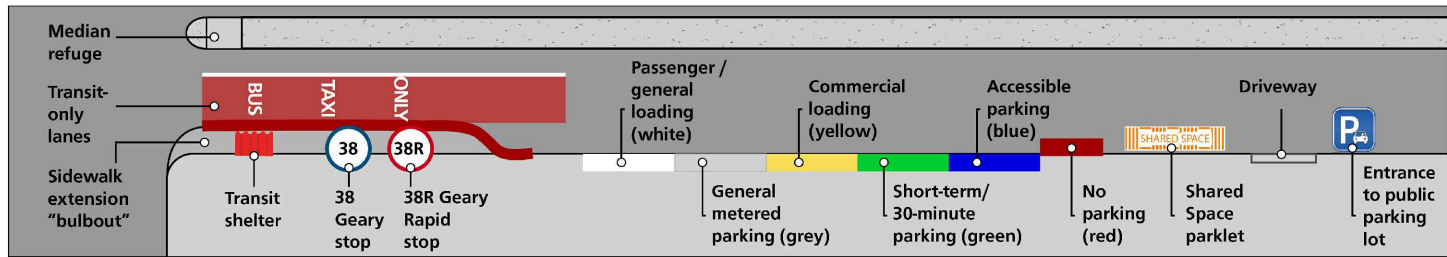
## PROJECT PROPOSALS (Outreach Round 2)



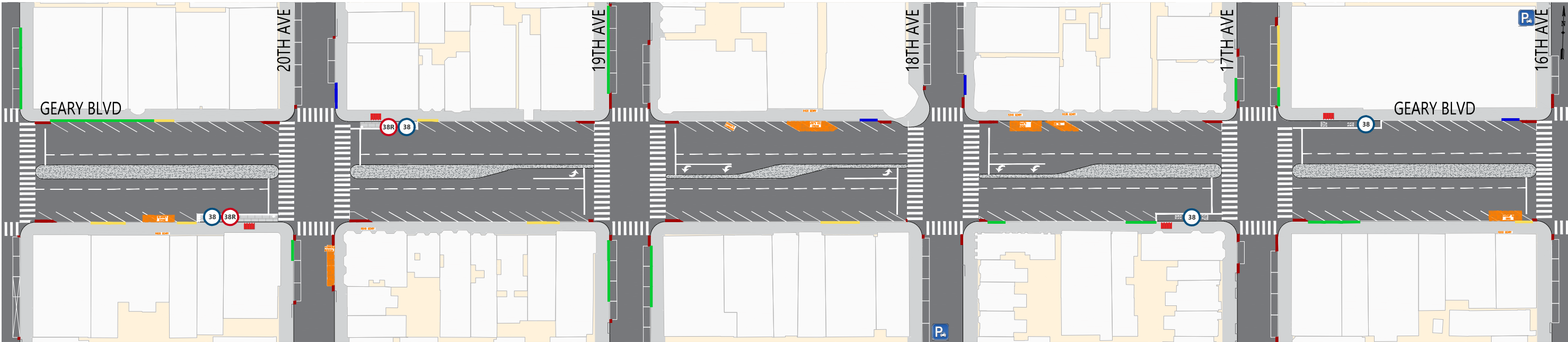
## SUMMARY OF PROPOSALS

- New dedicated red transit-only lanes
  - Relocation of the inbound 25th Ave Rapid stop across the street, with new widened sidewalks
  - Relocation of the 22nd/23rd Ave local stops across the street
  - Pedestrian bulbouts at the corners of 25th and 22nd avenues
  - Restriction of the left-turns from westbound Geary onto 26th and 22nd avenues
  - Updated parking and loading regulations based on merchant and survey feedback\*
  - New angled parking on 24th and 23rd avenues, north of Geary
  - Traffic safety treatments including expanded median refuges, daylighting and leading pedestrian signals
- \*proposal includes extended parking meter hours on Geary to add evenings (6-10pm) and Sundays (noon-6pm), without parking time-limits in the new time bands

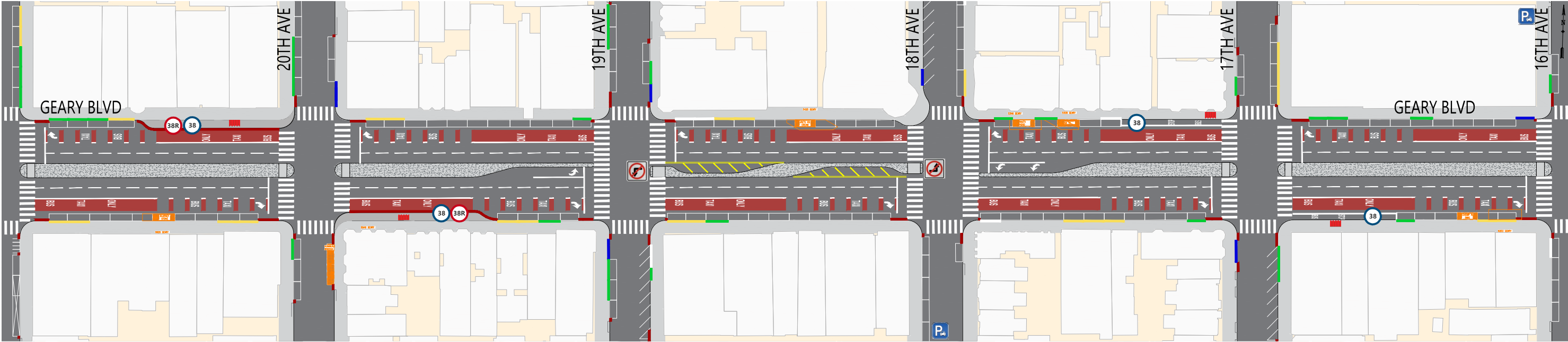
## LEGEND



## EXISTING CONDITIONS



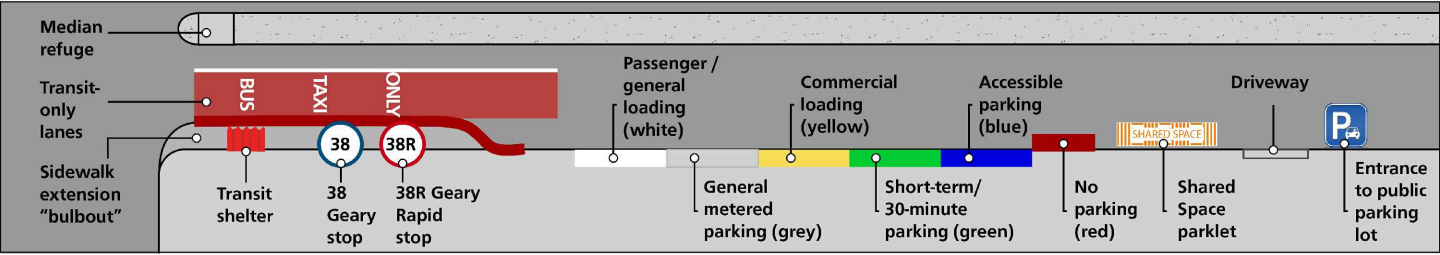
## PROJECT PROPOSALS (Outreach Round 2)



## SUMMARY OF PROPOSALS

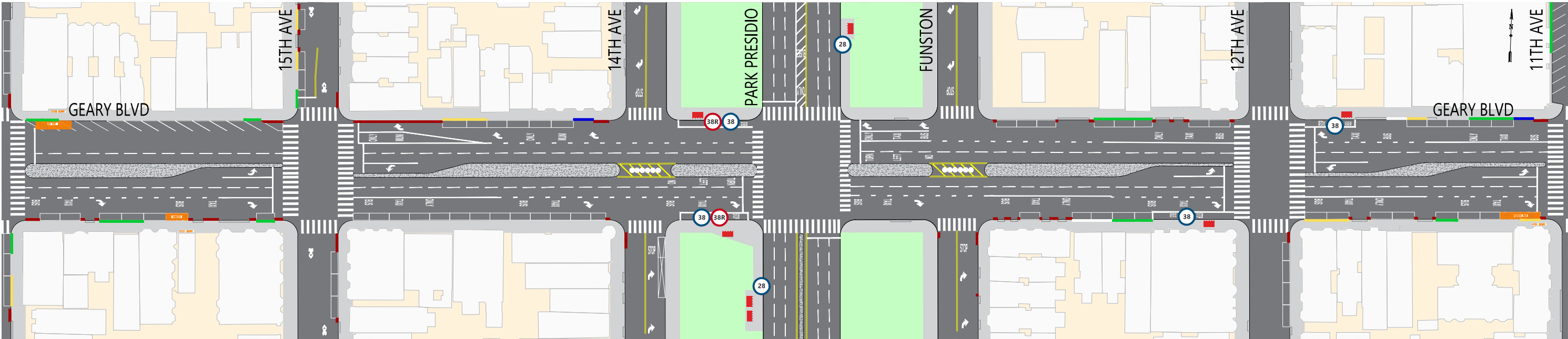
- New dedicated red transit-only lanes
  - Relocation of the 20th Ave Rapid stops across the street, with new widened sidewalks
  - Relocation of the 17th Ave local stops across the street
  - Restriction of the left-turns from westbound Geary onto 19th Ave and eastbound Geary onto 18th Ave
  - Updated parking and loading regulations based on merchant and survey feedback\*
  - New angled parking on 19th and 17th avenues, south of Geary, and on 18th Ave, north of Geary
  - Traffic safety treatments including expanded median refuges, day lighting and leading pedestrian signals
- \*proposal includes extended parking meter hours on Geary to add evenings (6-10pm) and Sundays (noon-6pm), without parking time-limits in the new time bands

## LEGEND

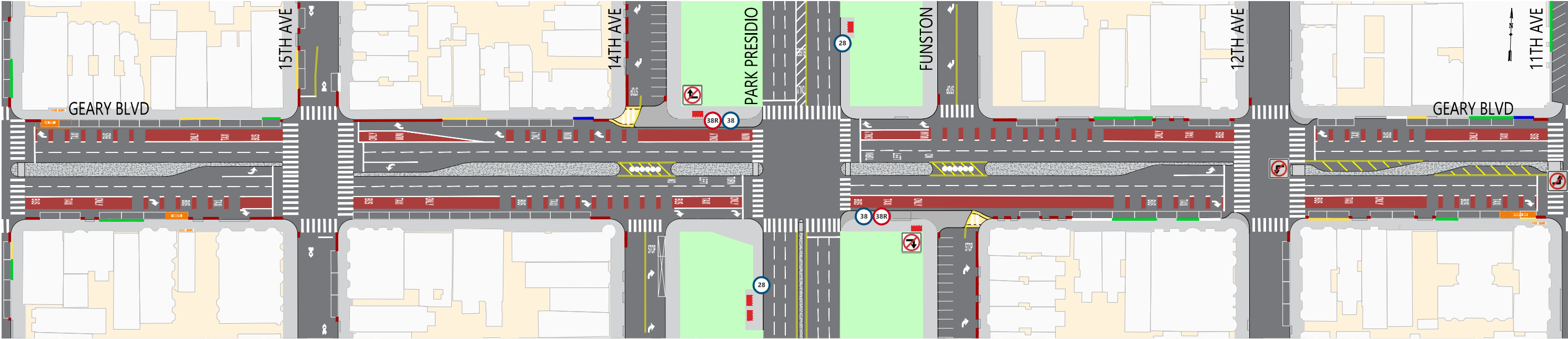




## EXISTING CONDITIONS



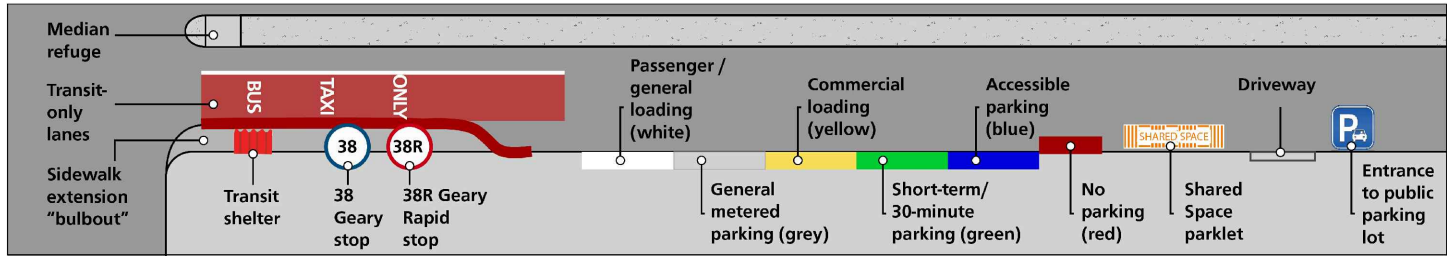
## PROJECT PROPOSALS (Outreach Round 2)



## SUMMARY OF PROPOSALS

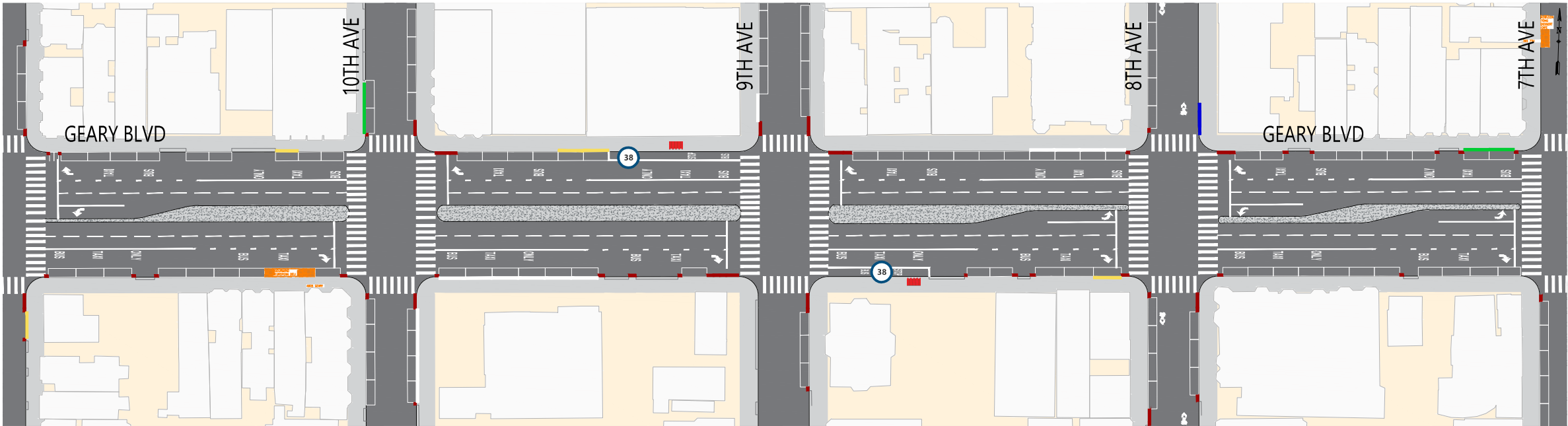
- New dedicated red transit-only lanes
  - Relocation of the inbound Park Presidio Rapid stop across the street
  - Sidewalk extensions at Park Presidio northwest and southeast corners that restrict right-turns from Geary onto 14th Ave northbound and Funston Ave southbound
  - Removal of the 12th Ave local stops
  - Pedestrian bulbouts at the corners of 12th and 11th avenues
  - Restriction of the left-turns from westbound Geary onto 12th Ave and eastbound Geary onto 11th Ave
  - Updated parking and loading regulations based on merchant and survey feedback\*
  - New angled parking on 14th Ave, north of Geary, and Funston Ave, south of Geary
  - Traffic safety treatments including expanded median refuges, day lighting and leading pedestrian signals
- \*proposal includes extended parking meter hours on Geary to add evenings (6-10pm) and Sundays (noon-6pm), without parking time-limits in the new time bands

## LEGEND

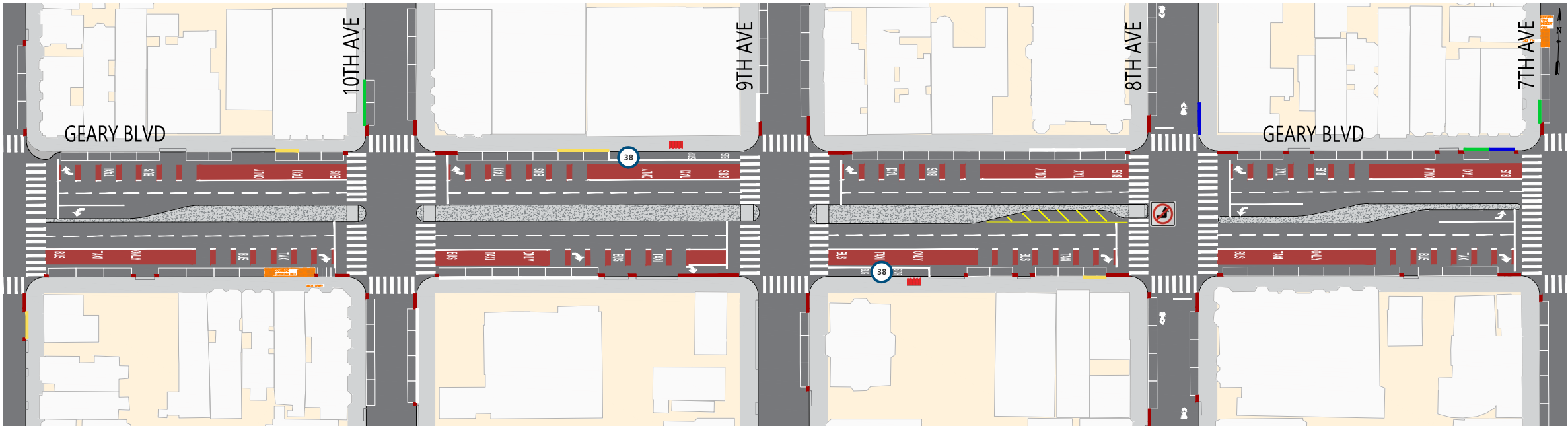




## EXISTING CONDITIONS



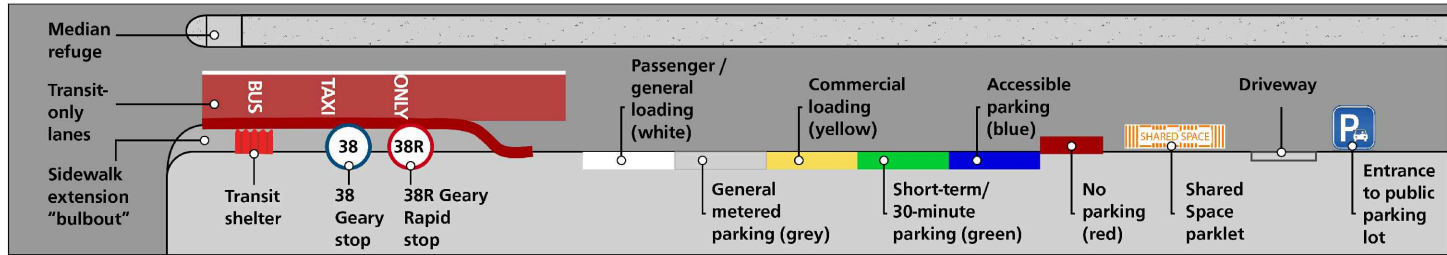
## PROJECT PROPOSALS (Outreach Round 2)



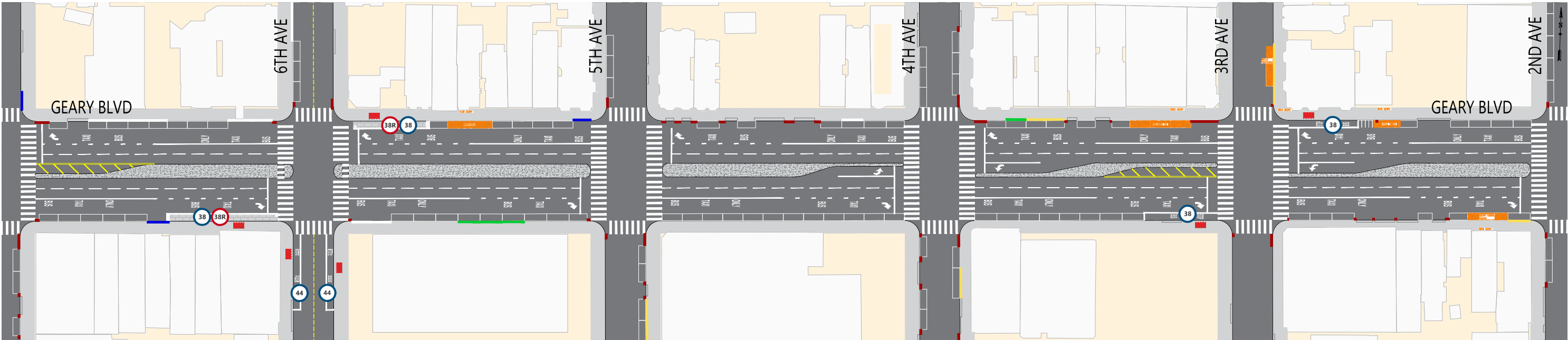
### SUMMARY OF PROPOSALS

- Dedicated red transit-only lanes
- Pedestrian bulbout at the corner of 11th Ave
- Restriction of the left-turn from eastbound Geary onto 8th Ave
- Traffic safety treatments including expanded median refuges, daylighting and leading pedestrian signals

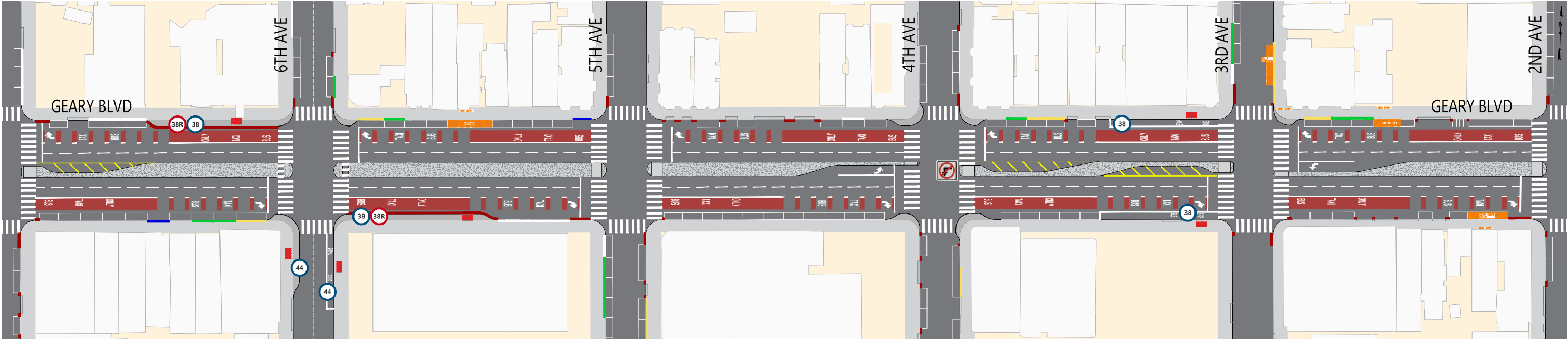
### LEGEND



## EXISTING CONDITIONS



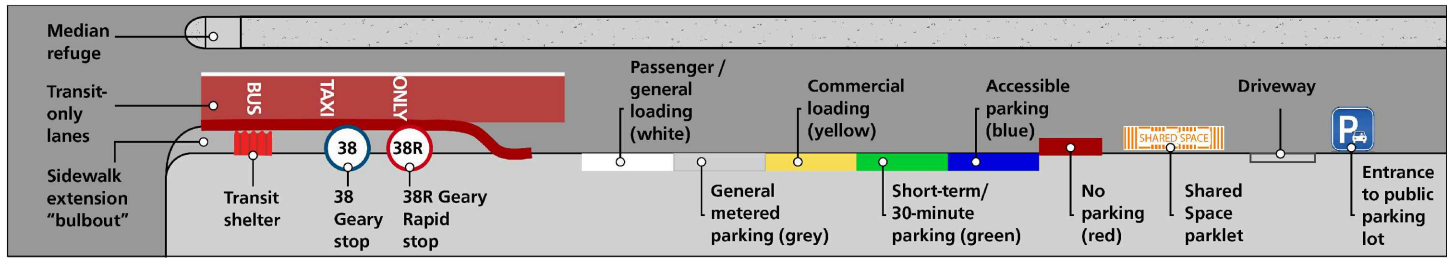
## PROJECT PROPOSALS (Outreach Round 2)



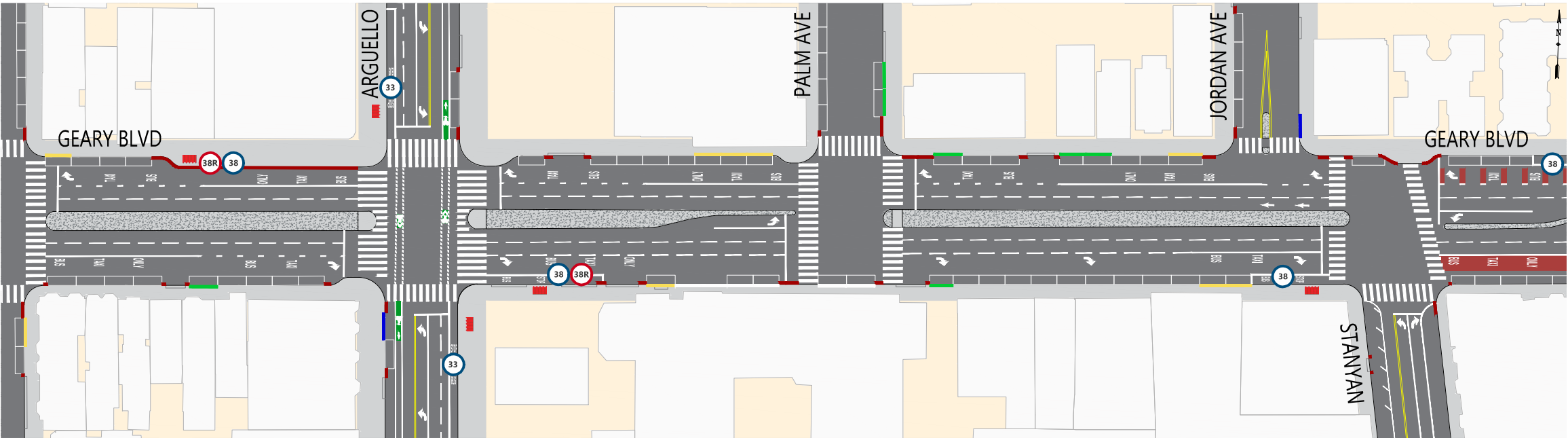
## SUMMARY OF PROPOSALS

- Dedicated red transit-only lanes
- Relocation of the 6th Ave Rapid stops across the street, with new widened sidewalks
- Relocation of the outbound 3rd Ave local stop across the street
- Pedestrian bulbouts at the corners of 6th, 4th and 3rd avenues
- Restriction of the left-turn from westbound Geary onto 4th Ave
- Traffic safety treatments including expanded median refuges, daylighting and leading pedestrian signals

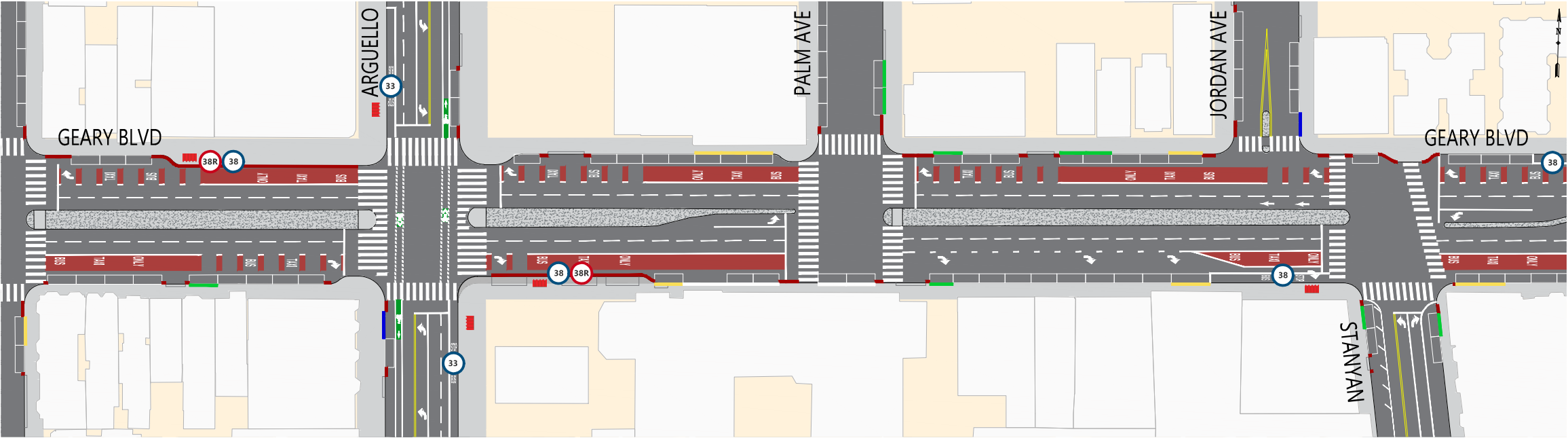
## LEGEND



## EXISTING CONDITIONS



## PROJECT PROPOSALS (Outreach Round 2)



### SUMMARY OF PROPOSALS

- Dedicated red transit-only lanes
- Extension of the inbound Arguello Rapid stop, with new widened sidewalks
- Updated parking and loading regulations at Stanyan Street
- Traffic safety treatments including expanded median refuges, day lighting and leading pedestrian signals

### LEGEND

