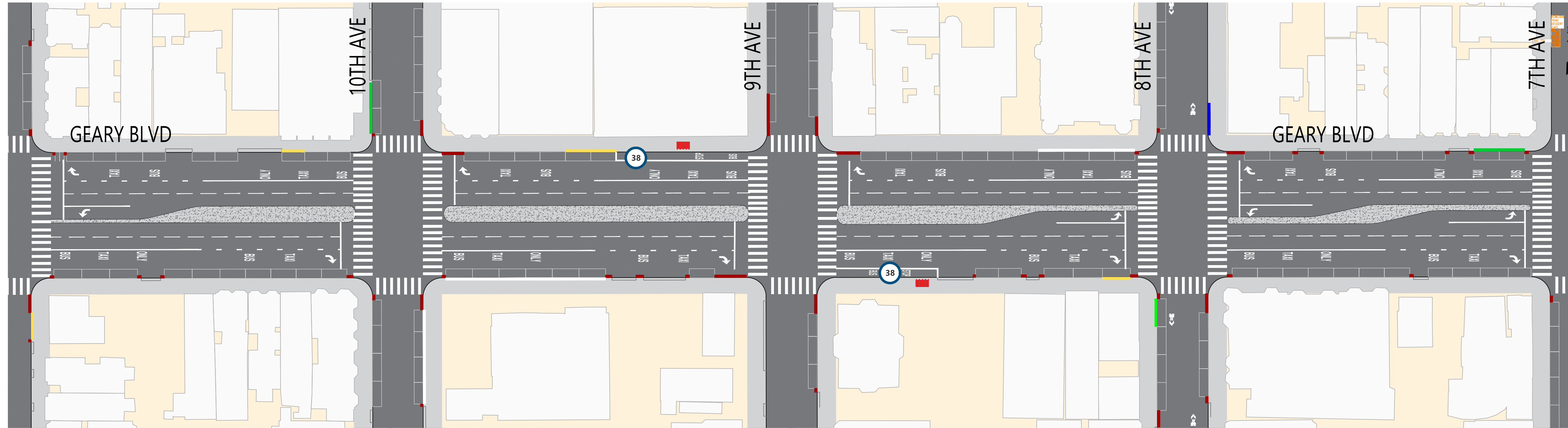
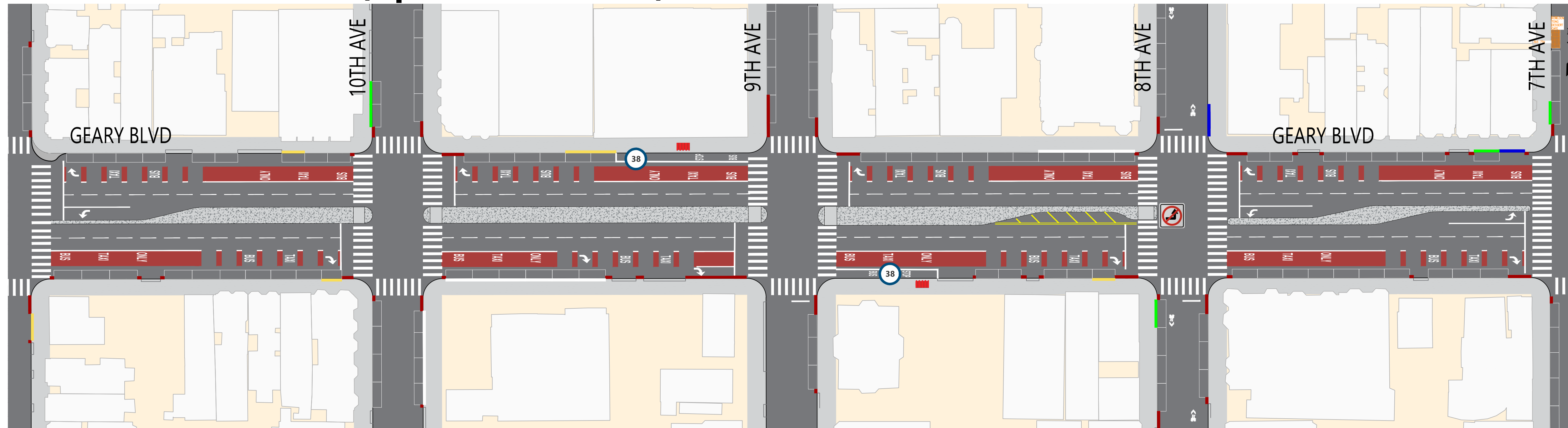


EXISTING CONDITIONS



PROJECT PROPOSALS (Updated Fall 2022)



SUMMARY OF PROPOSALS

- Dedicated red transit-only lanes
- Pedestrian bulbout at the corner of 11th Ave
- Restriction of the left-turn from eastbound Geary onto 8th Ave
- Traffic safety treatments including expanded median refuges, daylighting and leading pedestrian signals

LEGEND

