



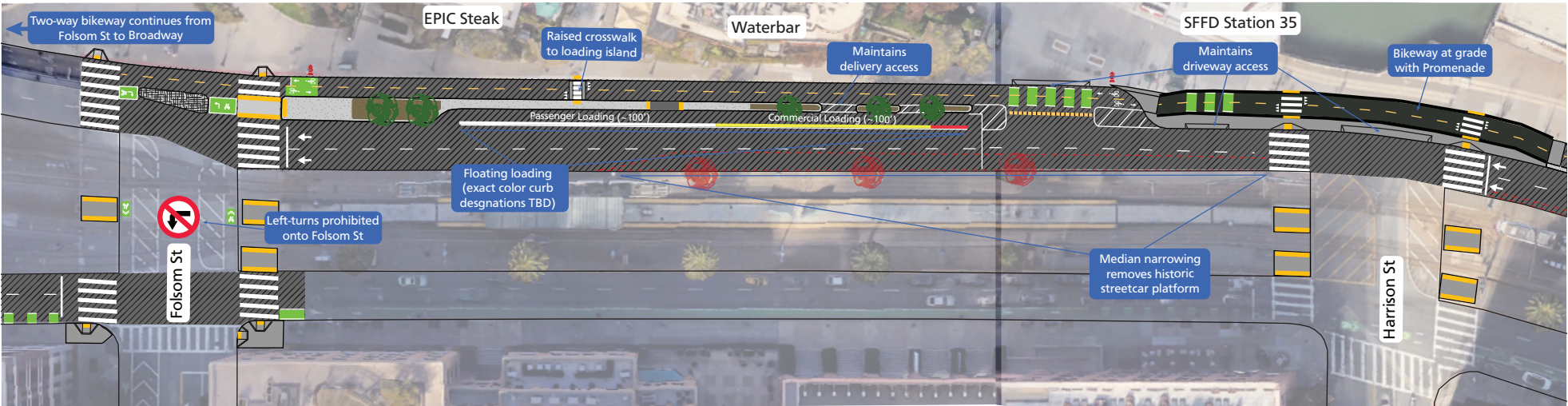
Central Embarcadero Safety Project

Draft Illustrated Plans (May 2025)

FOR MORE INFORMATION
visit: [SFMTA.com/Embarcadero](https://www.sfmta.com/Embarcadero)

CONTACT US
email: Embarcadero@SFMTA.com

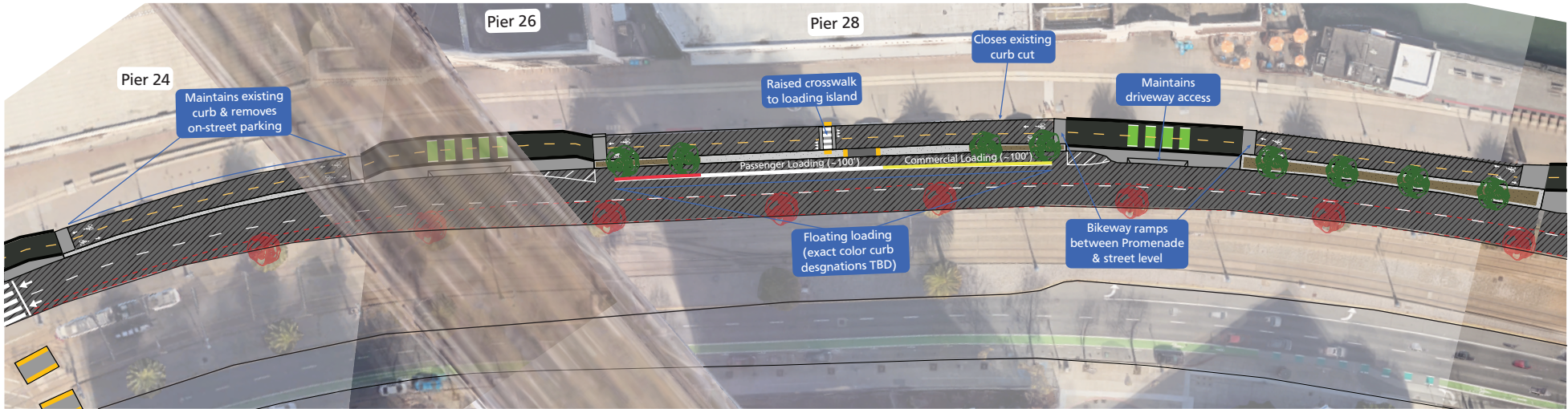
Sheet 3: Rincon Restaurant Zone (Folsom St to Harrison St)



Project Area Map and Cut Sheet Legend



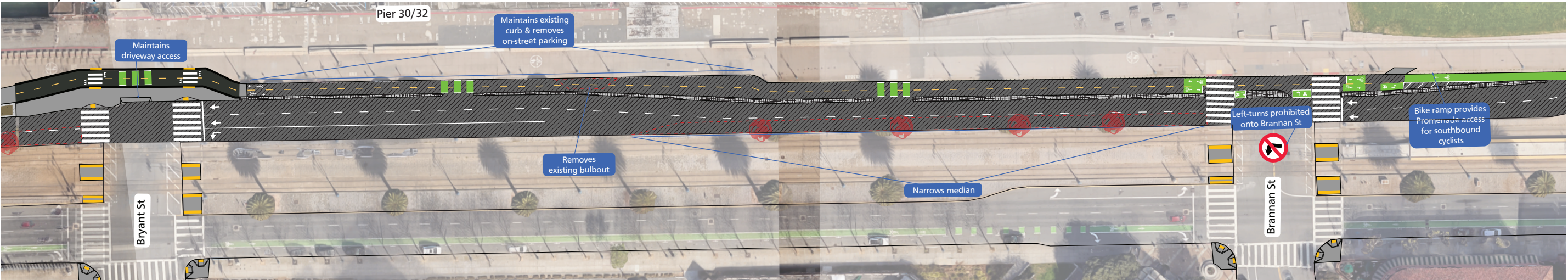
Sheet 4: Piers 24-28 (Between Harrison St & Bryant St)



Project Elements Legend

- Modify sidewalk/edge of promenade
- Pedestrian-accessible concrete island
- Non-accessible concrete island
- Cobblestone island with new palm tree
- Demolition of existing sidewalk/median, and associated removal of palm trees
- Promenade-level bikeway with detectable warning strip
- Repave roadway

Sheet 5: Pier 30/32(Bryant St to Brannan St)





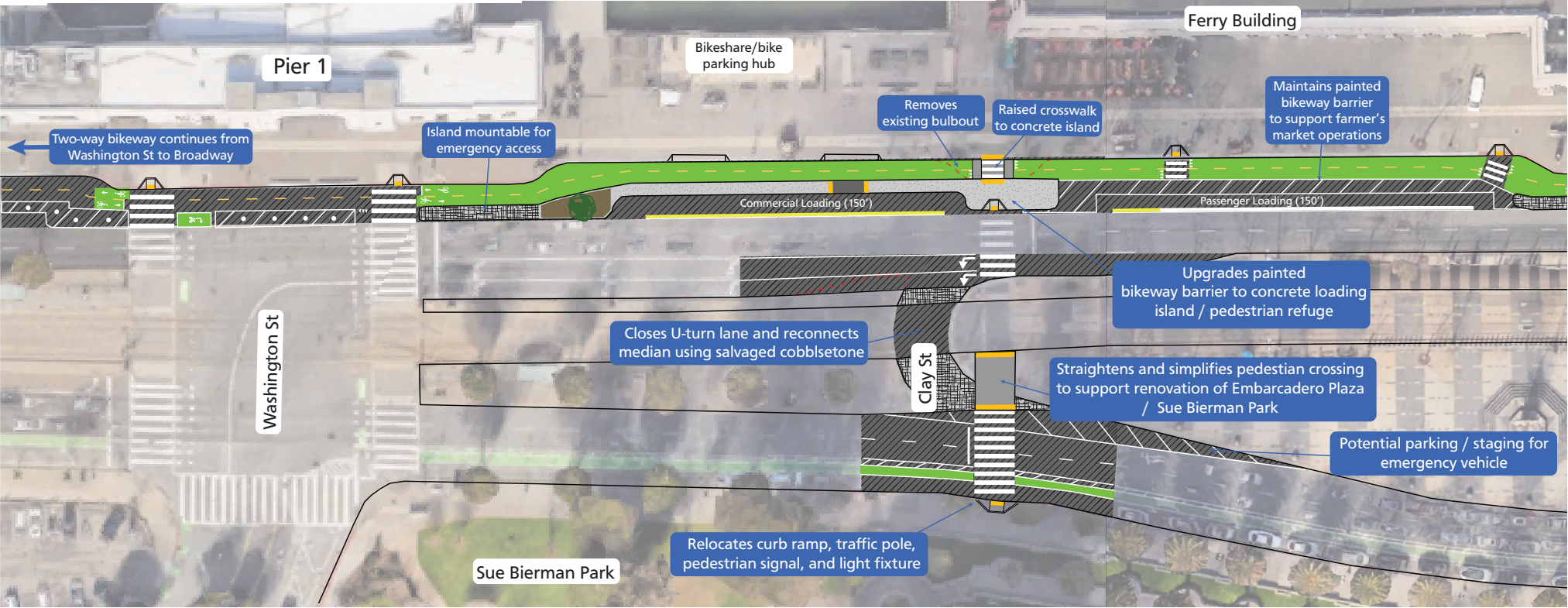
Central Embarcadero Safety Project

Draft Illustrated Plans (April 2025)

FOR MORE INFORMATION
visit: [SFMTA.com/Embarcadero](https://www.sfmta.com/Embarcadero)

CONTACT US
email: Embarcadero@SFMTA.com

Sheet 1: Ferry Building North (Washington Street to Ferry Building)



Project Area Map and Cut Sheet Legend



Project Elements Legend

- Pedestrian-accessible concrete island
- Non-accessible concrete island
- Cobblestone island with new palm tree
- Green-painted bikeway
- Demolition of existing curb

Sheet 2: Ferry Building South (Ferry Building to Mission Street)

